

Zoning Objectives

CI - Community Infrastructure	Provide for and protect civic, religious, community, education, health care and social infrastructure
GB - Greenbelt	Protect and provide for a Greenbelt
GE - General Employment	Provide opportunities for general enterprise and employment
HA - High Amenity	Protect and enhance high amenity areas
HT - High Technology	Provide for office, research and development and high technology/high technology manufacturing type employment in a high quality built and landscaped environment
LC - Local Centre	Protect, provide for and/or improve local centre facilities
MC - Major Town Centre	Protect, provide for and/or improve major town centre facilities
OS - Open Space	Preserve and provide for open space and recreational amenities
RA - Residential Area	Provide for new residential communities subject to the provision of the necessary social and physical infrastructure
RS - Residential	Provide for residential development and protect and improve residential amenity
TC - Town and District Centre	Protect and enhance the special physical and social character of town and district centres and provide and/or improve urban facilities

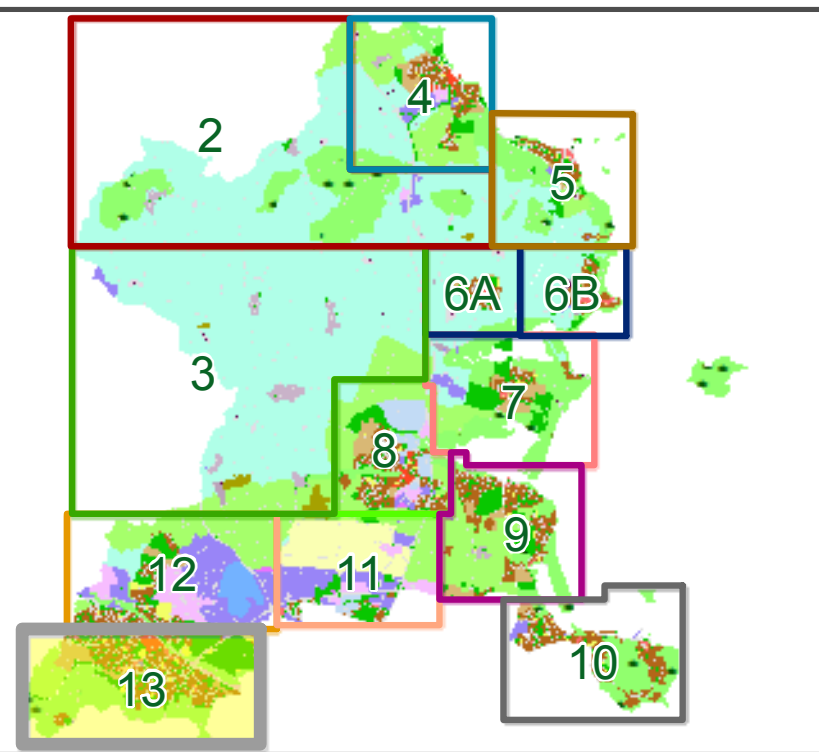
Specific Objectives

	County Boundary
	Architectural Conservation Area
	Development Boundary
	Masterplan Area
	Study Area
	Liffey Valley SAAO
	Urban Framework Plan
	Strategic Development Zone - SDZ
	Subject to Local Area Plan
	Indicative Cycle/Pedestrian Route
	Quality Bus Corridor
	Road Proposal
	Proposed Indicative Metro Route
	To Preserve Views
	Local Objective Points
	Protected Structures
	Recorded Monuments
	Provide for residential development at a density per hectare as shown
	Metro Stop
	Proposed School
	Traveller Accommodation
	Protect & preserve Trees, Woodlands and Hedgerows

PA SH 13.1 Proposed Amendment

Note:
For further detail please refer to the Written Statement, Written Statement Appendices and the Green Infrastructure Maps
To view details of Recorded Monuments and Places see www.archaeology.ie/publications-forms-legislation/record-of-monuments-and-places

Sheet Index Map



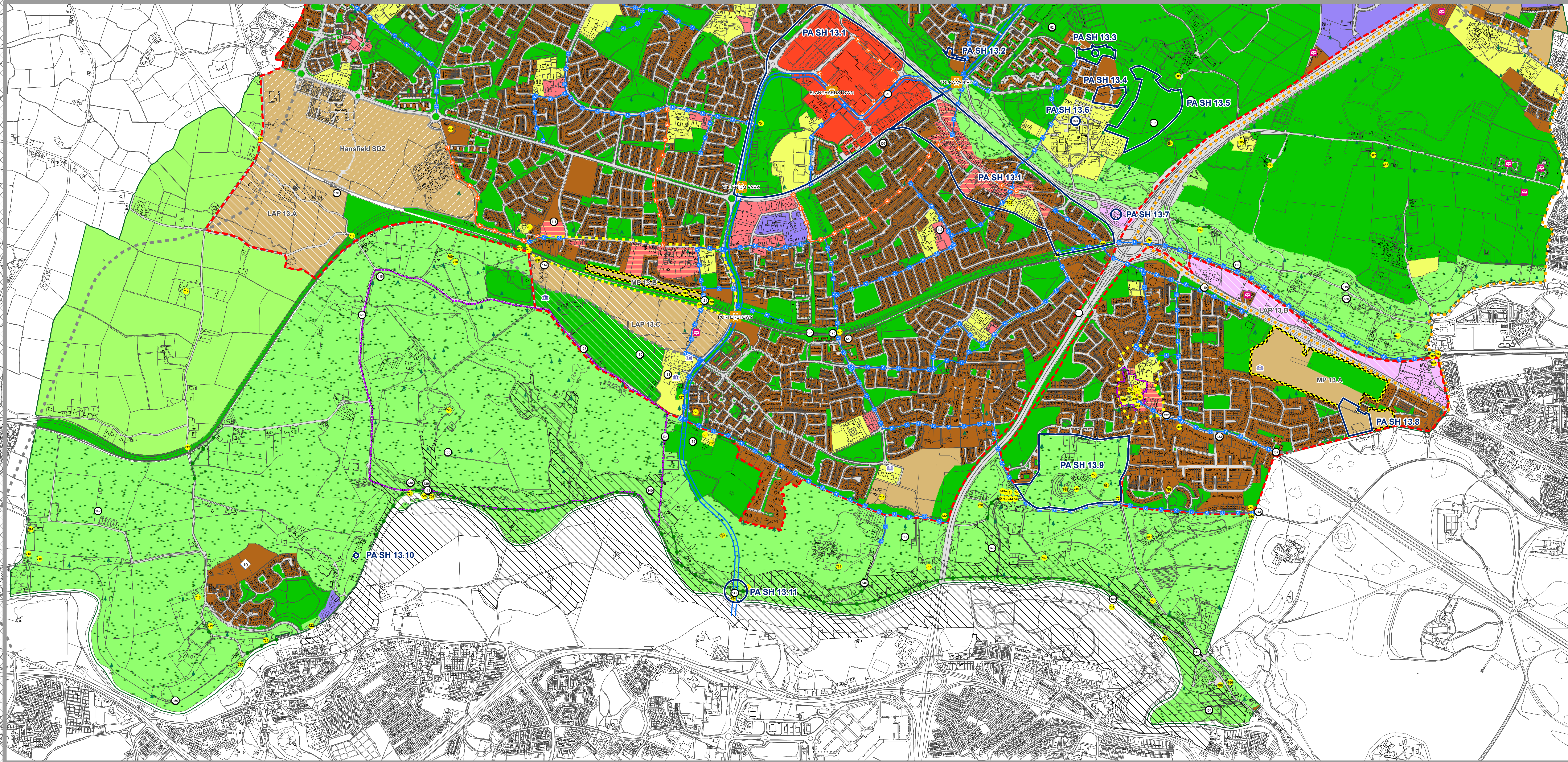
Fingal Development Plan 2017-2023

Be part of it.



SEE SHEET 12
BLANCHARDSTOWN NORTH

SEE SHEET 12
BLANCHARDSTOWN NORTH



Proposed Amendments	
PA SH 13.1	Amend the boundaries of the Urban Framework Plan for Blanchardstown Village as far as the Snugborough Road.
PA SH 13.2	Amend the zoning from RS 'Residential' to OS 'Open Space' at Old Corduff Road and Greenridge Court.
PA SH 13.3	Amend zoning from OS 'Open Space' to CI 'Community Infrastructure' at Waterville housing development. Insert Local Objective Provide for places of worship only. Any application for development on the site should be sensitively designed and sited and accompanied by a design statement, to ensure the protection of the syvan characteristics of the site.
PA SH 13.4	Amend zoning from RS 'Residential' and OS 'Open Space' to CI 'Community Infrastructure'.
PA SH 13.5	Amend zoning from OS 'Open Space' to CI 'Community Infrastructure' at National Sports Campus.
PA SH 13.6	Amend Local Objective 104 Facilitate and promote synergies between Connolly Hospital, Institute of Technology Blanchardstown (ITB) and related industries and ensure that future healthcare needs in line with Government policy can be provided for at Connolly Hospital.
PA SH 13.7	Insert new Local Objective in association with identified HT High Technology zoned lands at Blanchardstown Consider the provision of a hotel at a suitable location within the lands.
PA SH 13.8	Amend the zoning from RA 'Residential Area' to RS 'Residential' at Fairhaven.
PA SH 13.9	Include lands at Castlenock College within the 'development boundary' of Castlenock.
PA SH 13.10	Insert Local Objective Carry out a study of these lands, where currently in industrial use, to identify the mix and scale of uses and access arrangements appropriate to this visually sensitive area and the Council's objectives for the Liffey Valley SAAO and environs and to provide for the long term relocation of existing non-conforming industrial uses in this area.
PA SH 13.11	Amend Local Objective 147 Optimise the benefits of Metro West to take account of existing commuter traffic, enterprise and employment while ensuring that any crossing over the River Liffey Valley SAAO to facilitate a future light rail transit system is designed in such a way as would not compromise the amenity, tourism and economic potential of the Valley.