




Sign Location




Traffic Cones



Longitudinal Safety Zone



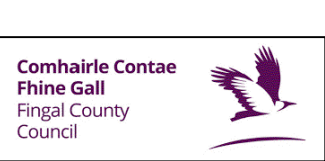
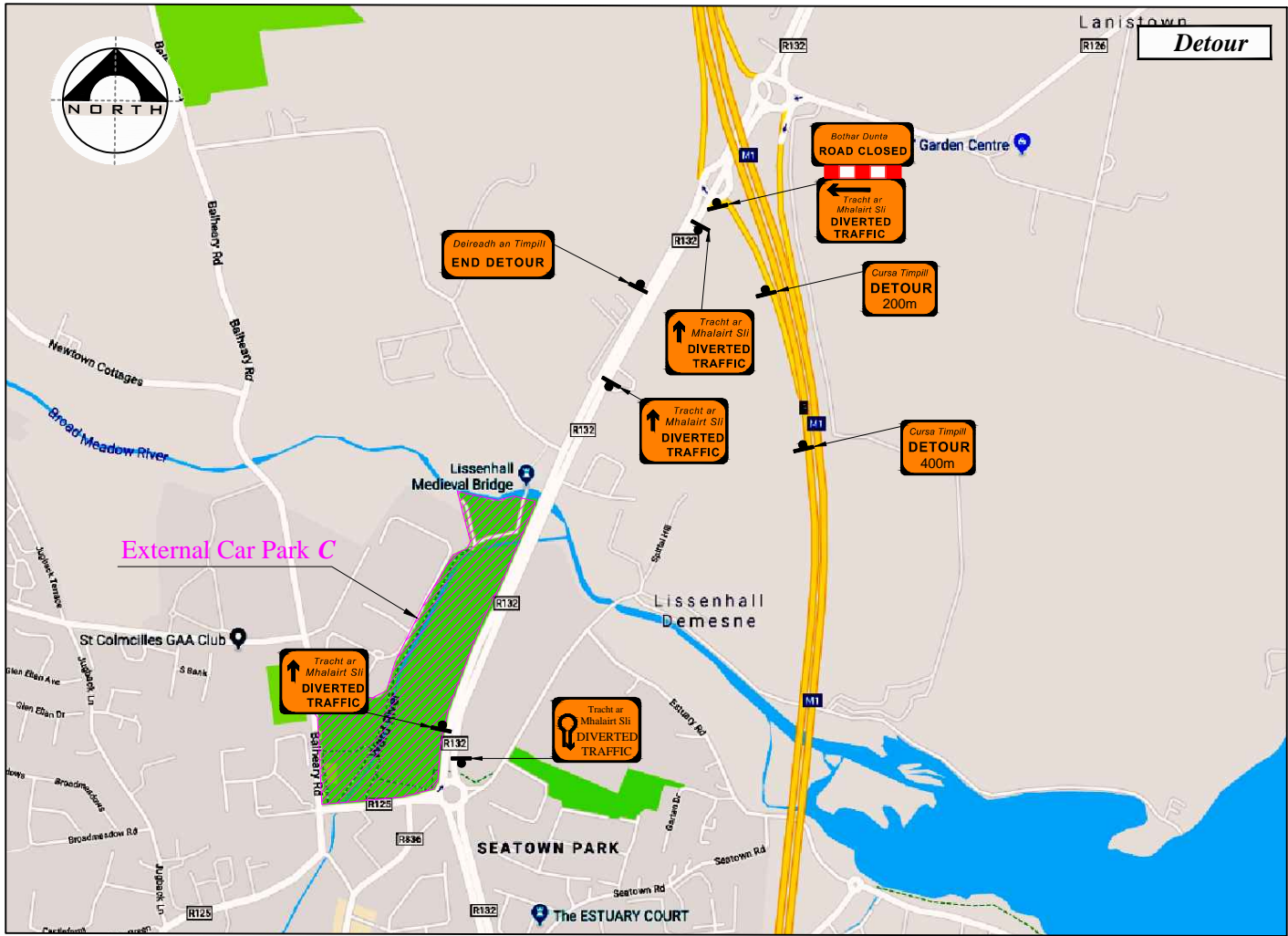
Marshalled Pedestrian Crossing



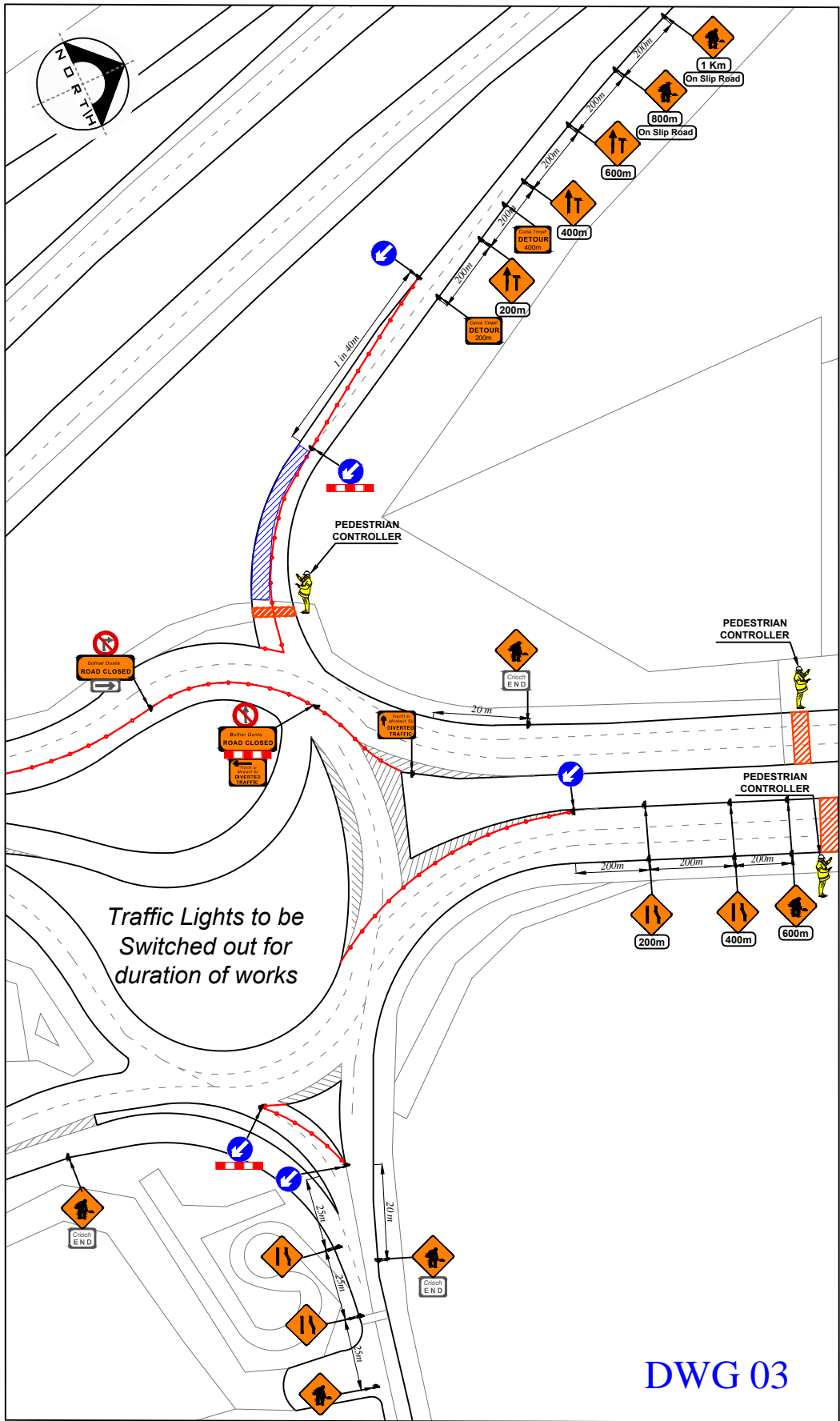
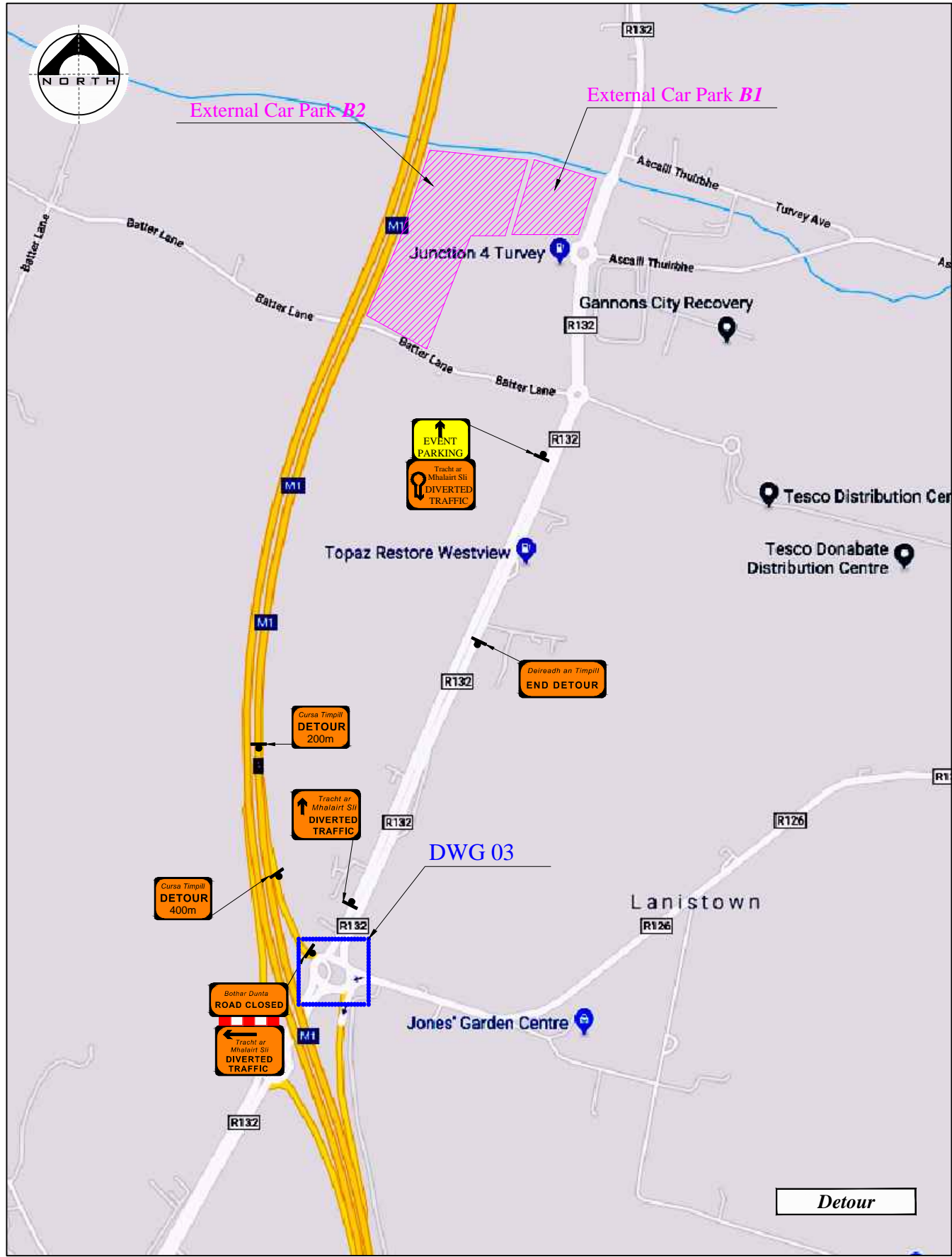
Event Parking

Design Parameters:			
	LV2	LV5	LV6
1. Statutory Speed of the Road: Km/h	30-60	80/100	120
2. Distance between Advance Signs	25m	200m	200m
3. Number of Advance Signs	2	3	5
4. Minimum Visibility of Signs	50m	120m	160m
5. Longitudinal Safety Zone	25m	45m	60m
6. Lateral Safety Zone	0.5m	1.2m	1.2m
7. Leading Taper	45°	1in40	1in60
8. Maximum at Tapers Cone Space	1m	3m	3m
9. Maximum Longitudinal Cone Space	6m	12m	12m

- Note:
1. All signs to comply with Chapter 8 of the "Traffic Signs Manual"-Guidance Document.
 2. All Traffic Management to be carried out in accordance with Chapter 8 of the "Traffic Signs Manual".
 3. Detailed Risk Assessment to be carried out prior to the installation of Traffic Management System.
 4. The Contractor shall be responsible for providing all required ramp access to all changes in road surface level where traffic runs on a temporary surface and also for cycle/pedestrian ramps where footpath, cycle paths or any surface which has a level discontinuity as a result of the works.
 5. Exact sign positions to be agreed on site.
 6. All safety zones to be maintained at all times.
 7. All affected Parties and An Garda Siochana to be notified prior to works commencing.
 8. Signs to be positioned so as not to cause an obstruction to other road users.
 9. Minimum lane width of 3,25m to be maintained at all times.
 10. All signs dimensions to be per Table 8.2.5 and faced with retro-reflective material to class ref 2 of EN 12899.
 11. All delineation devices should be designed in accordance with IS EN 13422.
 12. All signage shall be per Tables 8.2.1, 8.2.2 and 8.2.4 of the Chapter 8 "Traffic Signs Manual"
 13. Safety barrier to be in accordance with IS EN 1317.
 14. "End of Roadworks" sign placed 20m to 50m from end of works area.
 15. If centre line coning not achievable cones to be placed along road edge.



Rev:	Description:	Date:	Job Details:	Drawing:	Dwg no:
			Proposed Traffic Management Plan for Flavours of Fingal County Show at Newbridge Demesne	TMP for "Free Flow" System Junction A Layout All Day	02
			Sheet: 2 of 3	Drawn By: DM	Rev:
			CAD File ref.:	Date: March 2018	Scale: As Shown



LEGEND			
	Sign Location		
	Traffic Cones		
	Longitudinal Safety Zone		
	Marshalled Pedestrian Crossings		
	Event Parking		

Design Parameters:	LV2	LV5	LV6
1. Statutory Speed of the Road: Km/h	30-60	80/100	120
2. Distance between Advance Signs	25m	200m	200m
3. Number of Advance Signs	2	3	5
4. Minimum Visibility of Signs	50m	120m	160m
5. Longitudinal Safety Zone	25m	45m	60m
6. Lateral Safety Zone	0.5m	1.2m	1.2m
7. Leading Taper	45°	1in40	1in60
8. Maximum at Tapers Cone Space	1m	3m	3m
9. Maximum Longitudinal Cone Space	6m	12m	12m

- Note:
- All signs to comply with Chapter 8 of the "Traffic Signs Manual"-Guidance Document.
 - All Traffic Management to be carried out in accordance with Chapter 8 of the "Traffic Signs Manual".
 - Detailed Risk Assessment to be carried out prior to the installation of Traffic Management System.
 - The Contractor shall be responsible for providing all required ramp access to all changes in road surface level where traffic runs on a temporary surface and also for cycle/pedestrian ramps where footpath, cycle paths or any surface which has a level discontinuity as a result of the works.
 - Exact sign positions to be agreed on site.
 - All safety zones to be maintained at all times.
 - All affected Parties and An Garda Síochána to be notified prior to works commencing.
 - Signs to be positioned so as not to cause an obstruction to other road users.
 - Minimum lane width of 3,25m to be maintained at all times.
 - All signs dimensions to be per Table 8.2.5 and faced with retro-reflective material to class ref 2 of EN 12899.
 - All delineation devices should be designed in accordance with IS EN 13422.
 - All signage shall be per Tables 8.2.1, 8.2.2 and 8.2.4 of the Chapter 8 "Traffic Signs Manual"
 - Safety barrier to be in accordance with IS EN 1317.
 - "End of Roadworks" sign placed 20m to 50m from end of works area.
 - If centre line coning not achievable cones to be placed along road edge.