

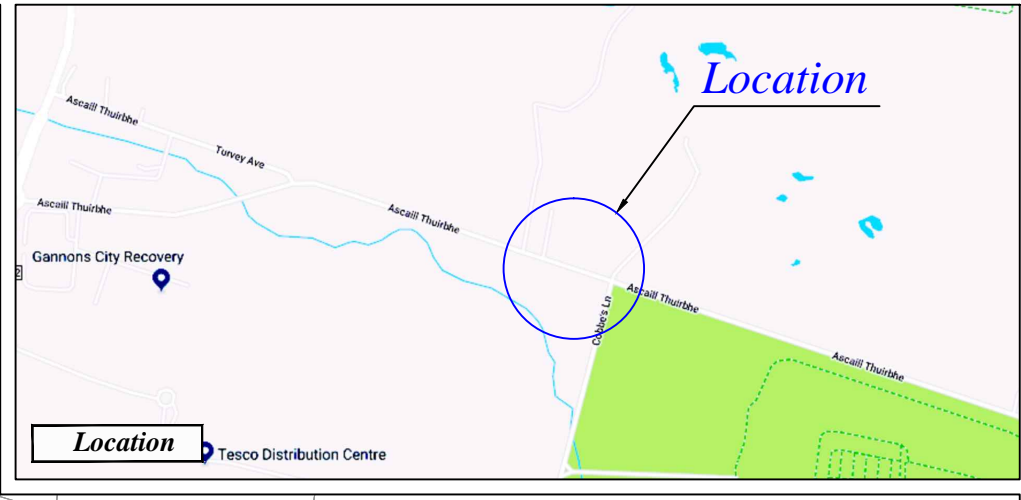
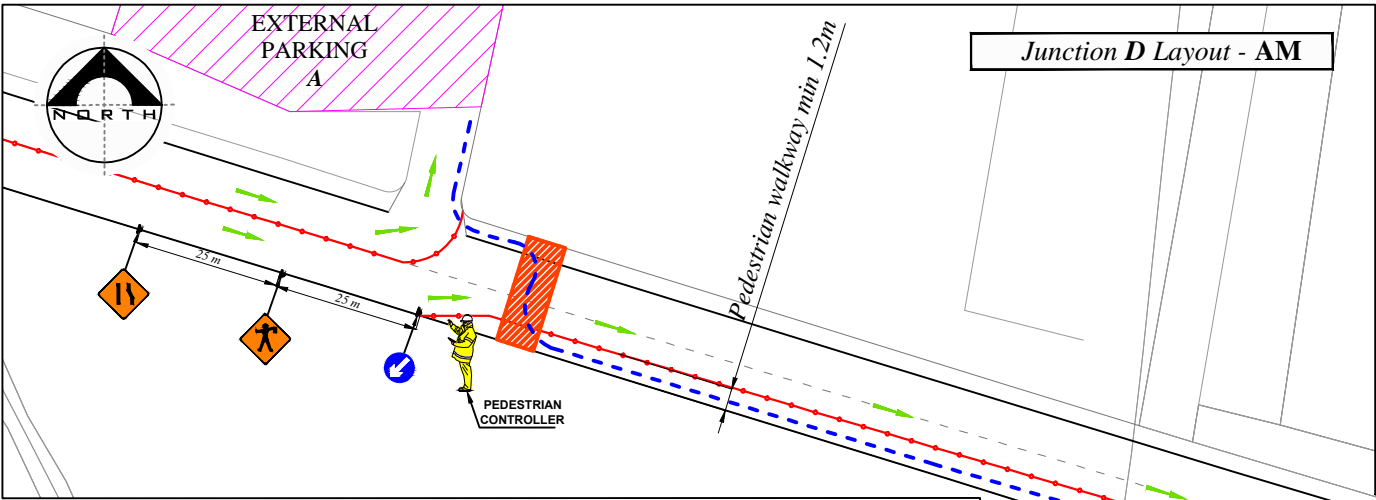
LEGEND

- Sign Location
- Traffic Cones
- Longitudinal Safety Zone
- Marshalled Pedestrian Crossings
- Event Parking
- Marshalled Movements
- Free Flowing Movements

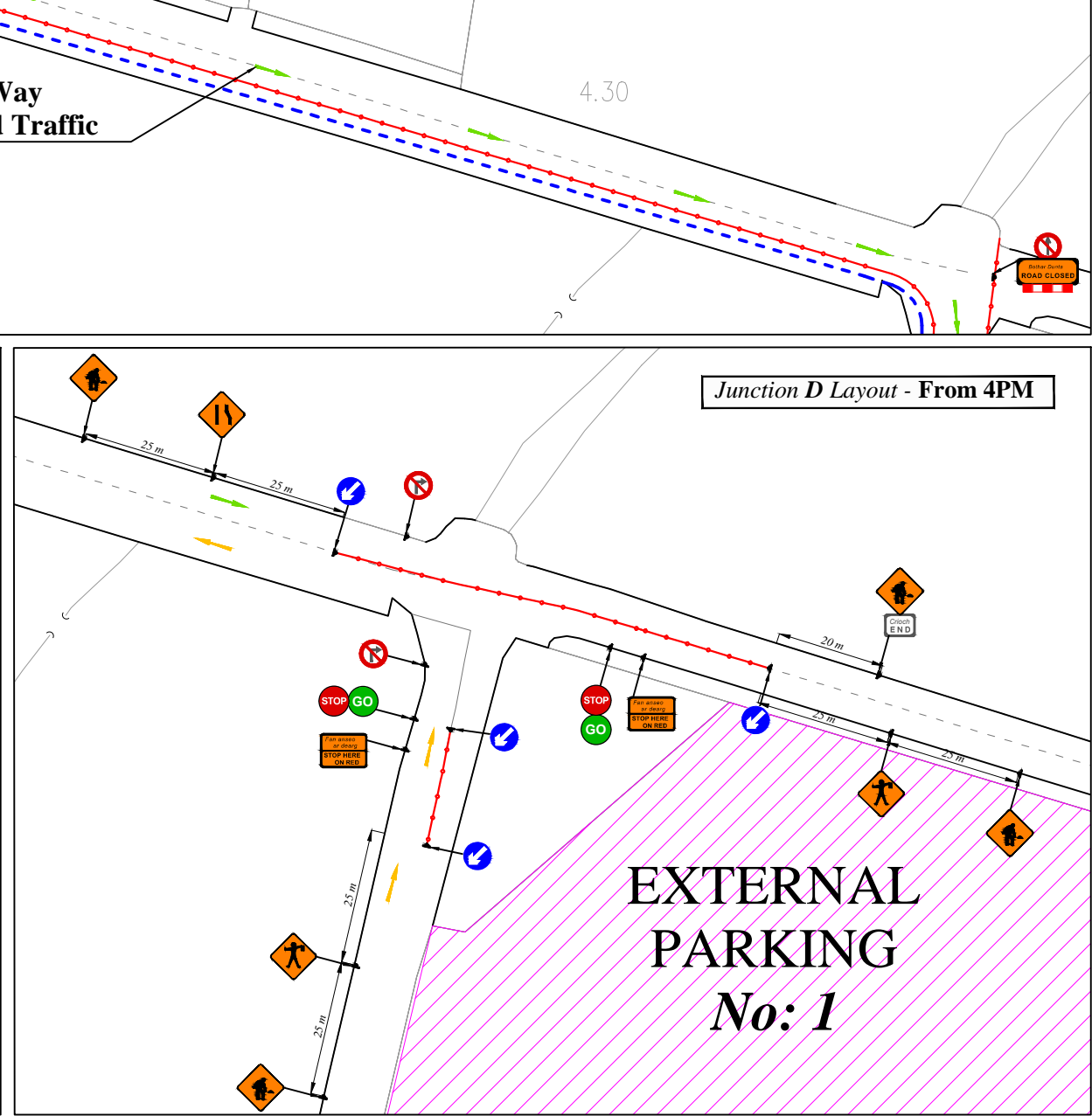
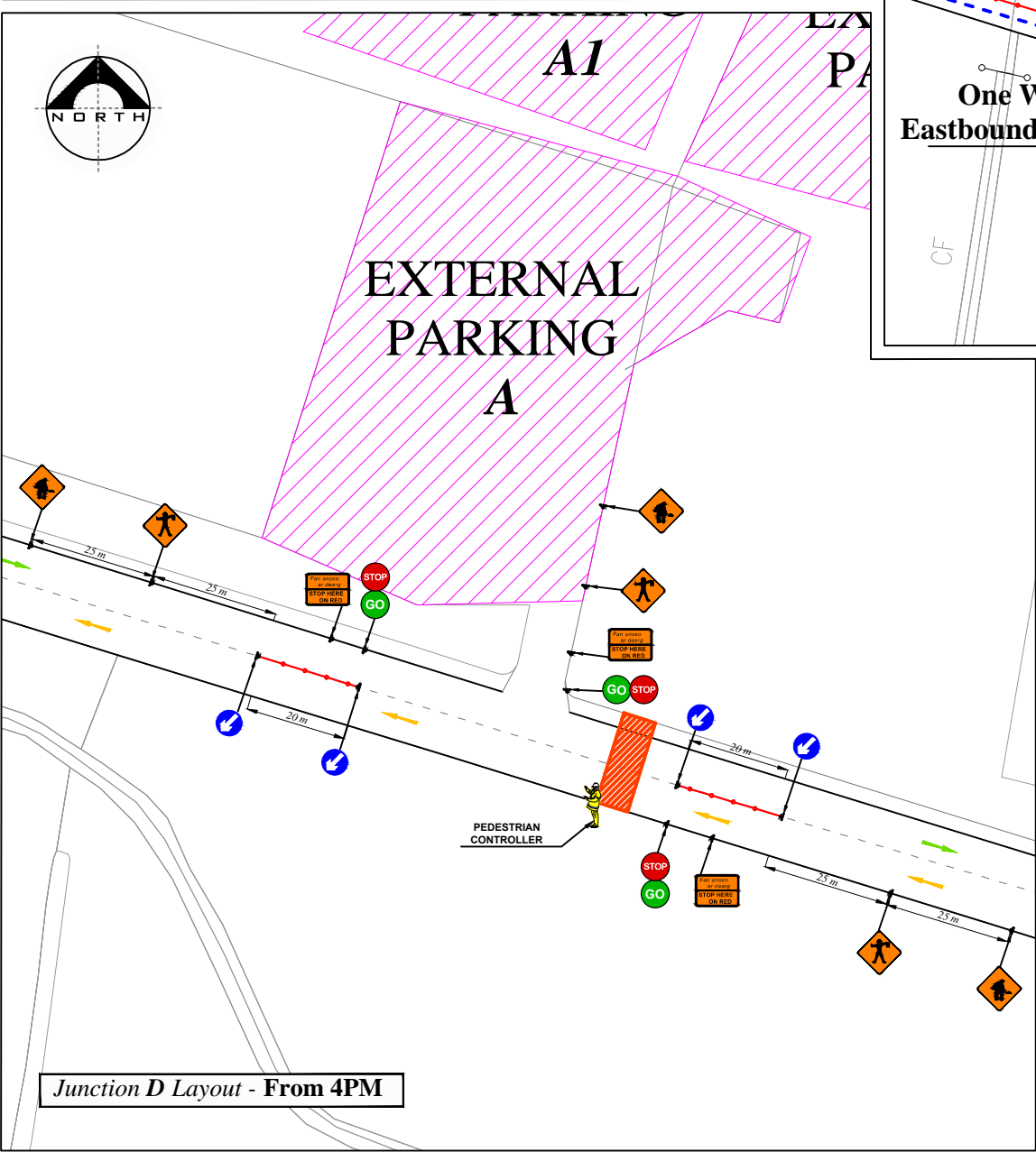
Design Parameters:	LV2
1. Statutory Speed of the Road: Km/h	30-60
2. Distance between Advance Signs	25m
3. Number of Advance Signs	2
4. Minimum Visibility of Signs	50m
5. Longitudinal Safety Zone	25m
6. Lateral Safety Zone	0.5m
7. Leading Taper	45°
8. Maximum at Tapers Cone Space	1m
9. Maximum Longitudinal Cone Space	6m

Note:

- All signs to comply with Chapter 8 of the "Traffic Signs Manual"-Guidance Document.
- All Traffic Management to be carried out in accordance with Chapter 8 of the "Traffic Signs Manual".
- Detailed Risk Assessment to be carried out prior to the installation of Traffic Management System.
- The Contractor shall be responsible for providing all required ramp access to all changes in road surface level where traffic runs on a temporary surface and also for cycle/pedestrian ramps where footpath, cycle paths or any surface which has a level discontinuity as a result of the works.
- Exact sign positions to be agreed on site.
- All safety zones to be maintained at all times.
- All affected Parties and An Garda Siochana to be notified prior to works commencing.
- Signs to be positioned so as not to cause an obstruction to other road users.
- Minimum lane width of 3,25m to be maintained at all times.
- All signs dimensions to be per Table 8.2.5 and faced with retro-reflective material to class ref 2 of EN 12899.
- All delineation devices should be designed in accordance with IS EN 13422.
- All signage shall be per Tables 8.2.1, 8.2.2 and 8.2.4 of the Chapter 8 "Traffic Signs Manual"
- Safety barrier to be in accordance with IS EN 1317.
- "End of Roadworks" sign placed 20m to 50m from end of works area.
- If centre line coning not achievable cones to be placed along road edge.



LEGEND	
	Sign Location
	Traffic Cones
	Longitudinal Safety Zone
	Marshalled Pedestrian Crossings
	Event Parking
	Marshalled Movements
	Free Flowing Movements
Design Parameters:	
1. Statutory Speed of the Road: Km/h	30-60
2. Distance between Advance Signs	25m
3. Number of Advance Signs	2
4. Minimum Visibility of Signs	50m
5. Longitudinal Safety Zone	25m
6. Lateral Safety Zone	0.5m
7. Leading Taper	45°
8. Maximum at Tapers Cone Space	1m
9. Maximum Longitudinal Cone Space	6m



- Note:**
- All signs to comply with Chapter 8 of the "Traffic Signs Manual"-Guidance Document.
 - All Traffic Management to be carried out in accordance with Chapter 8 of the "Traffic Signs Manual".
 - Detailed Risk Assessment to be carried out prior to the installation of Traffic Management System.
 - The Contractor shall be responsible for providing all required ramp access to all changes in road surface level where traffic runs on a temporary surface and also for cycle/pedestrian ramps where footpath, cycle paths or any surface which has a level discontinuity as a result of the works.
 - Exact sign positions to be agreed on site.
 - All safety zones to be maintained at all times.
 - All affected Parties and An Garda Siochana to be notified prior to works commencing.
 - Signs to be positioned so as not to cause an obstruction to other road users.
 - Minimum lane width of 3,25m to be maintained at all times.
 - All signs dimensions to be per Table 8.2.5 and faced with retro-reflective material to class ref 2 of EN 12899.
 - All delineation devices should be designed in accordance with IS EN 13422.
 - All signage shall be per Tables 8.2.1, 8.2.2 and 8.2.4 of the Chapter 8 "Traffic Signs Manual"
 - Safety barrier to be in accordance with IS EN 1317.
 - "End of Roadworks" sign placed 20m to 50m from end of works area.
 - If centre line coning not achievable cones to be placed along road edge.