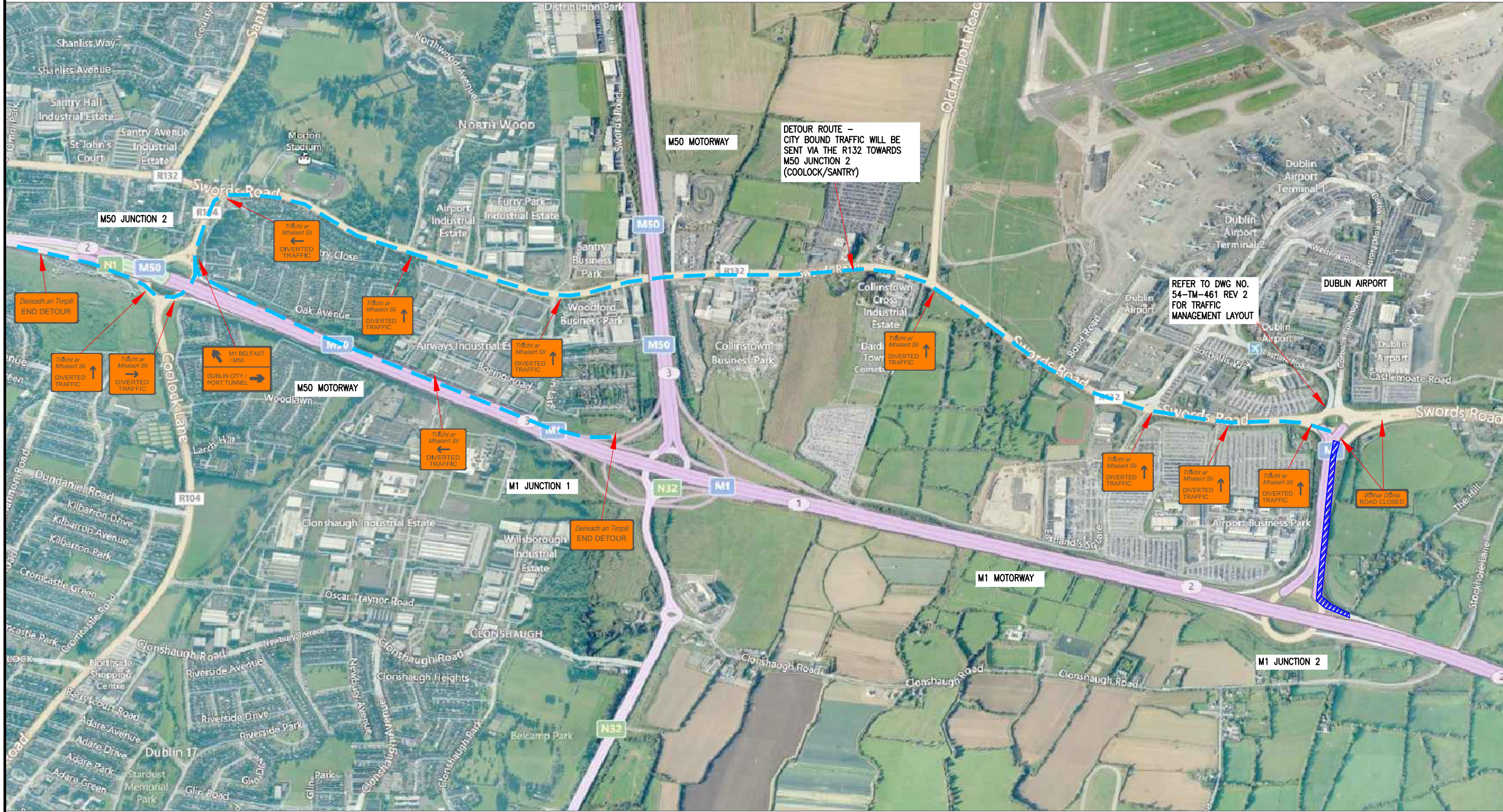


NOTES:
1. End of Roadwork sign placed 20 to 50m from end of works area



Design Parameters for Level 5 (Dual Carriageway or Motorway 50, 60 or 80 km/h)				
Design Parameters	Roadworks Type A or B (Full or Part-Time)		Roadworks Type C (Single Vehicle Operation)	
	50 or 60 km/h	80 km/h	50 or 60 km/h	80 km/h
Speed Limit	50 or 60 km/h	80 km/h	50 or 60 km/h	80 km/h
Temporary Signs				
Sign Visibility (m)	50	90	50	90
Number of Signs	3	4	3	3
Cumulative Distance (m)	600	800	600	600
Distance between advance signs (m)	200	200	200	200
Minimum Rate of Taper				
Taper at Lane (m)	1 in 20	1 in 40	1 in 10	1 in 35
Taper at Hard Shoulder (m)	1 in 10	1 in 20	1 in 5	1 in 10
Transition length (m)	2 x Taper (Lane)	2 x Taper (Lane)	2 x Taper (Lane)	2 x Taper (Lane)
Maximum Lamp Spacing				
At Taper (m)	6	6	6	6
Longitudinal (m)	12	12	12	12
Maximum Cone Spacing				
At Taper (m)	3	3	3	3
Longitudinal (m)	6	12	6	12
Cone Height (mm)	750	750	750	750
Safety Zone				
Longitudinal (m)	15	45	15	45
Lateral (m)	0.5	1.2	0.5	1.2
Minimum Lane Width				
Minimum Lane Width (m)	3.25	3.25	3.25	3.25

Note:
1. Refer to Chapter 8, section 8.3.2 for definition of design parameters.
2. Cone spacing shown is the maximum permitted. Where geometry or any other site specific reason dictates the spacing shall be reduced accordingly.
3. Where two lanes are being maintained the minimum lane widths should be near side lane 3.25m and off side lane 3.0m. Where one lane is to be maintained the optimum lane width for all classes of vehicles is 3.25m. This may be reduced to a minimum of 3.0m. Below this, HGVs and buses must be marshalled past the works. The absolute minimum lane width, if only cars and light vehicles are present, is 2.5m. Refer to Chapter 8, Paragraphs 8.3.1.2 to 8.3.1.4.

Rev.	Drawn	Checkd.	Approved	Date	Description
1	AP	DP	DP	23/10/18	FIRST SUBMISSION
0	AP	DP	DP	23/10/17	FIRST SUBMISSION



AIRPORT ROAD - PHASE 3

THIS DRAWING TO BE READ IN CONJUNCTION WITH DWG NO. 54-TM-461 FOR AIRPORT PHASE 3

— — — — — DETOUR ROUTE FOR M50 / PORT TUNNEL / CITY

WORK TO FIGURED DIMENSIONS ONLY
DO NOT SCALE DRAWING

Project Title
MOTORWAY MAINTENANCE AND RENEWALS CONTRACT.

Drawing Title
TTM LAYOUT FOR FULL CLOSURE AT AIRPORT ROAD PHASE 3

Scale	Date	Drawn by
AT A1 NTS AT A3 NTS	23/10/17	AP
Drawing no.	54-TM-472	Rev. 1