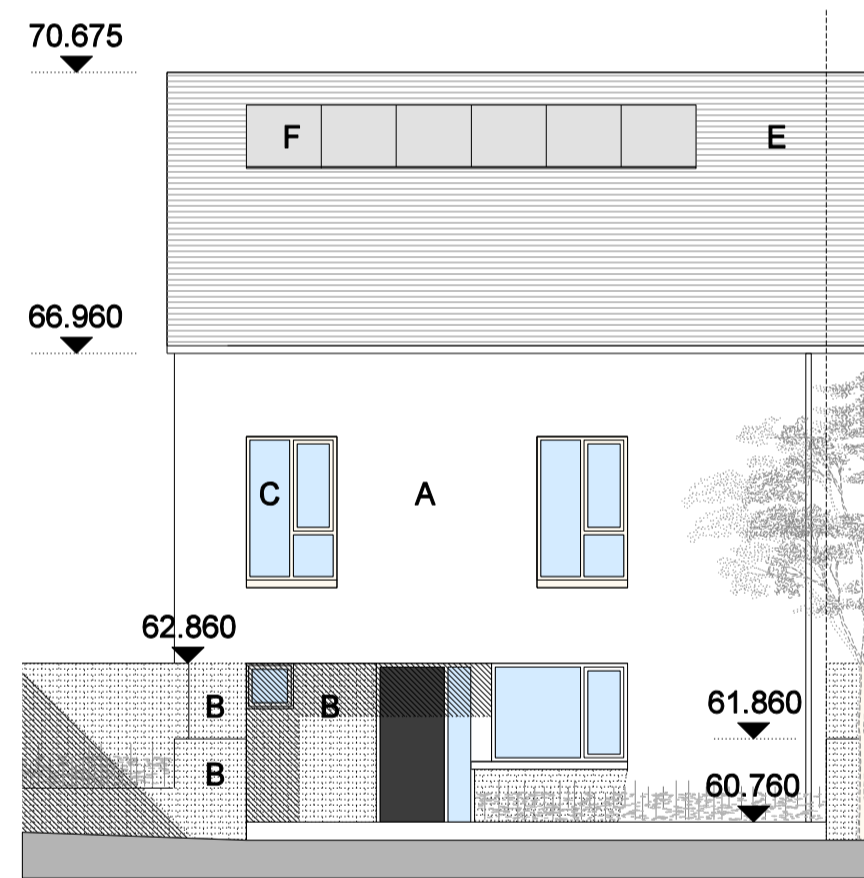
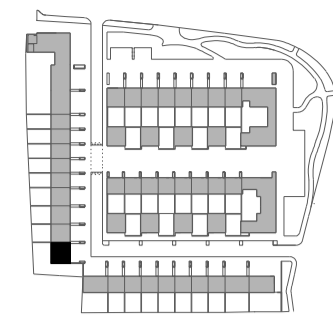


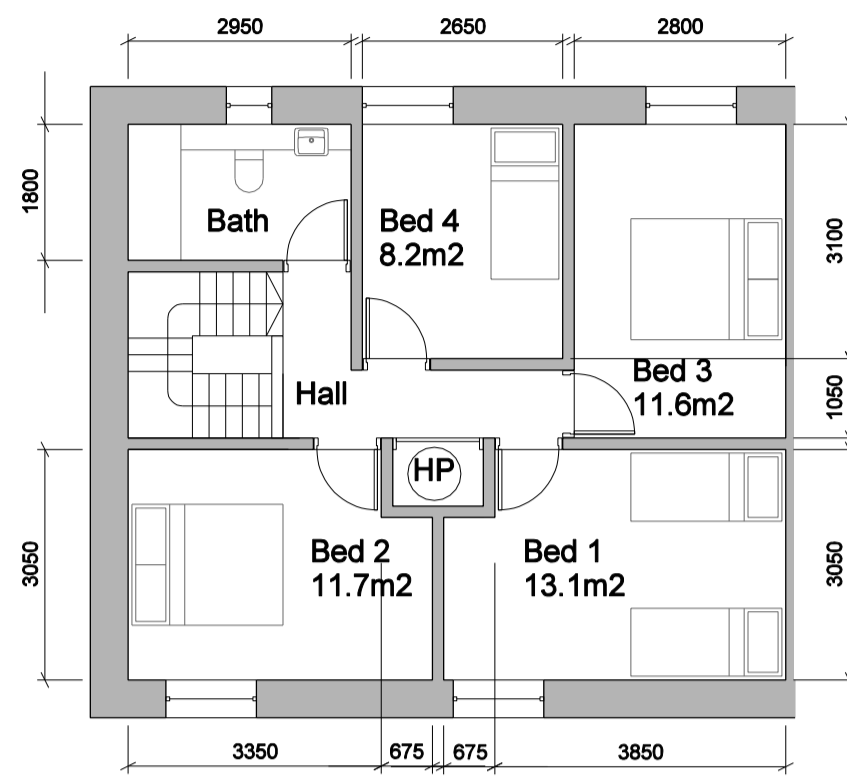
Ground Floor



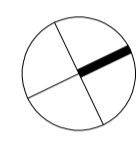
Front elevation



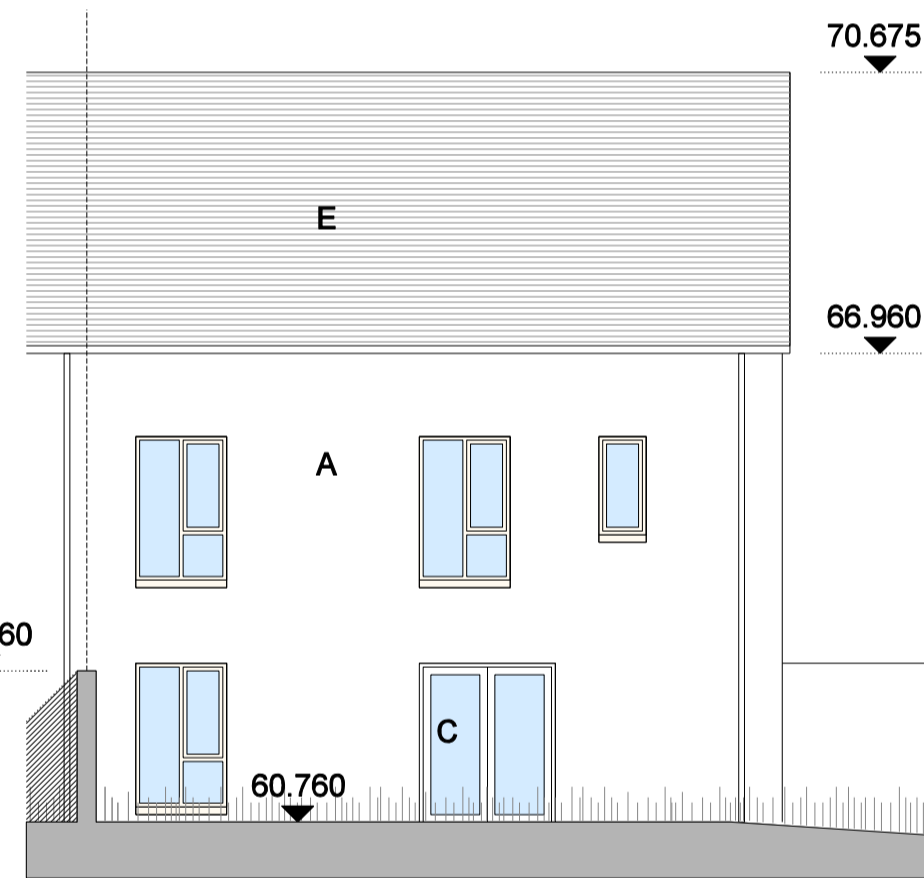
Key Plan



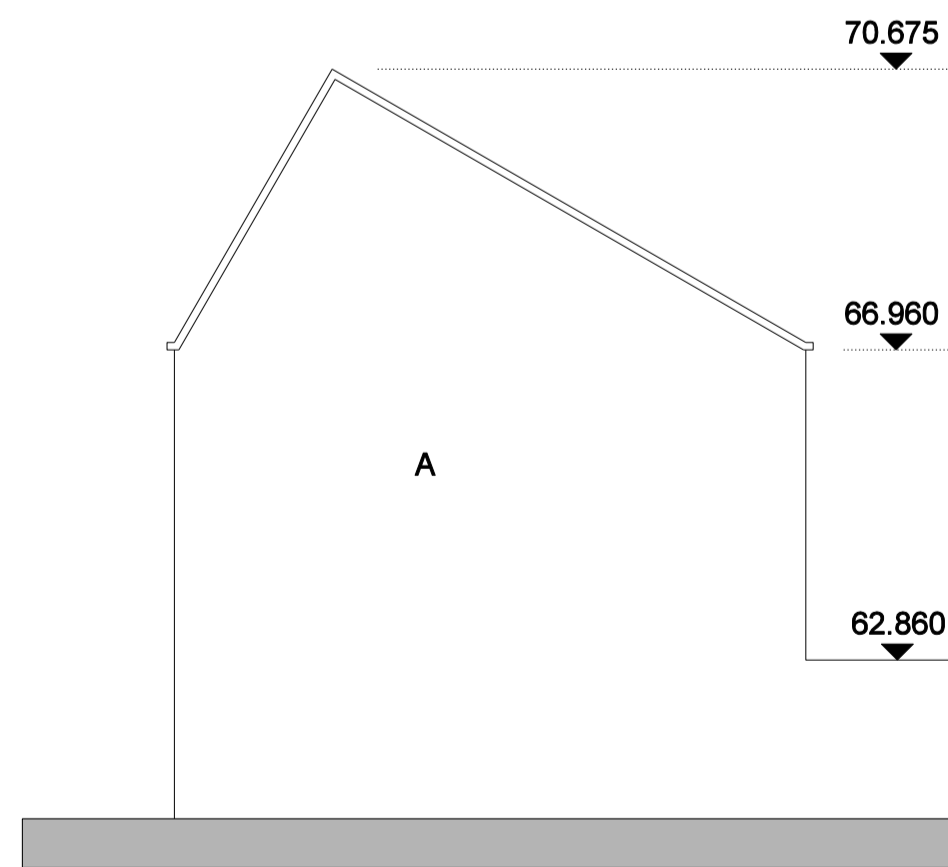
First Floor



TOTAL AREAS
 GFA: 117.3m²
 Aggregate living area: 40m²
 Aggregate bedroom area: 44.6m²
 Storage: 6m²



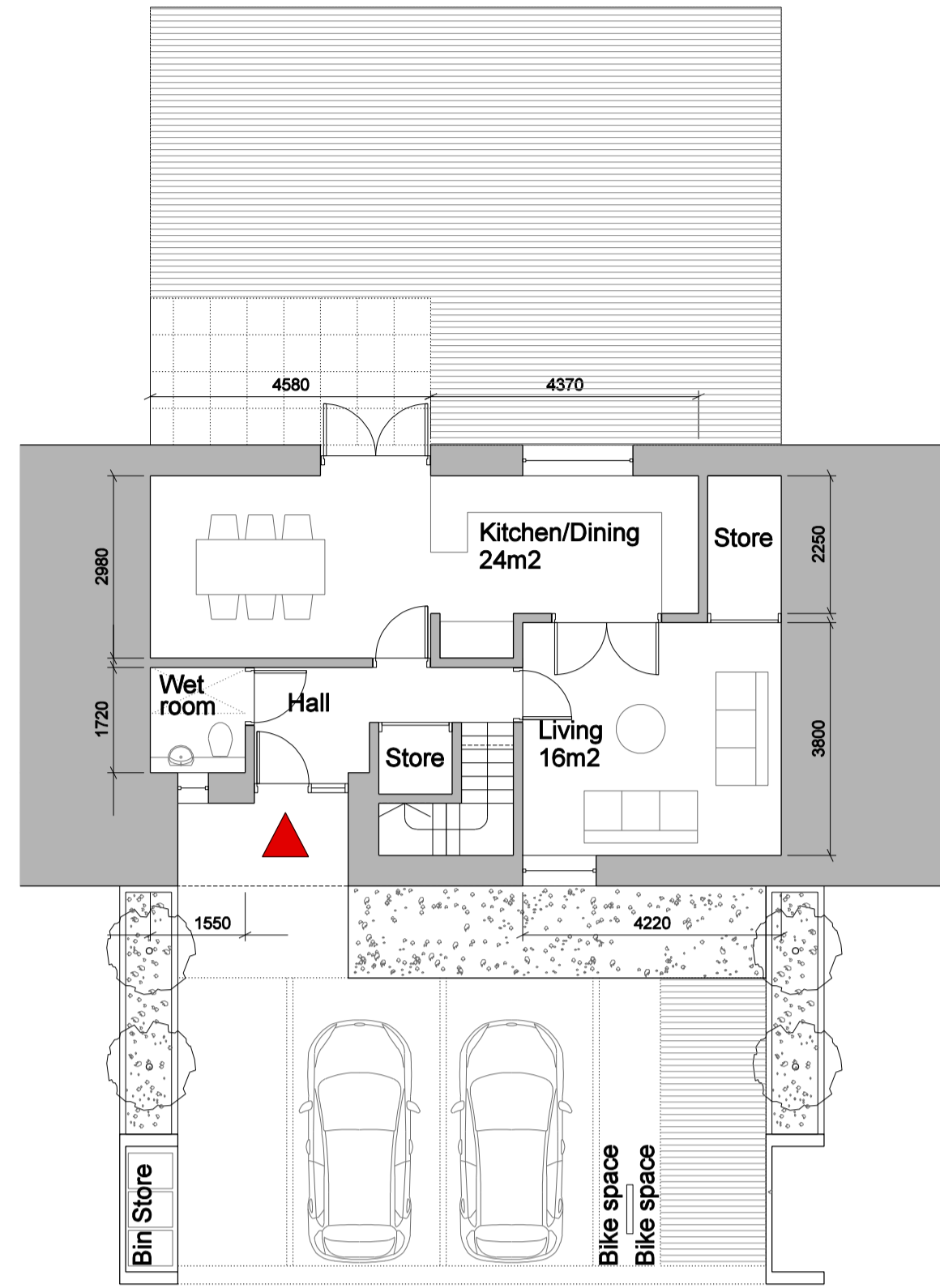
Rear elevation



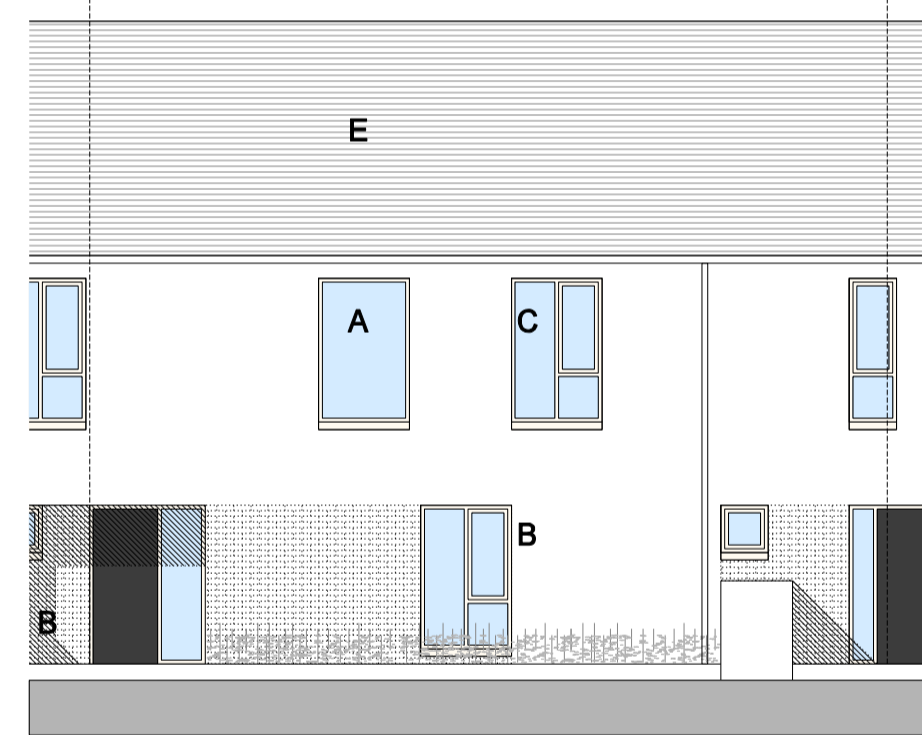
End-of-terrace elevation

TYPE F: 4 bed, 7 person

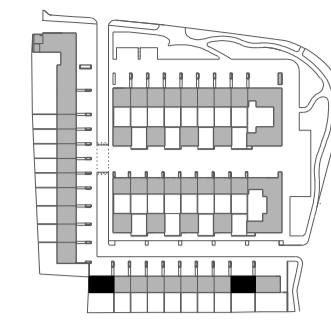
Rev	Date	Description	By	Chk
P1	25.04.2017	Issued for Planning	AC	CN



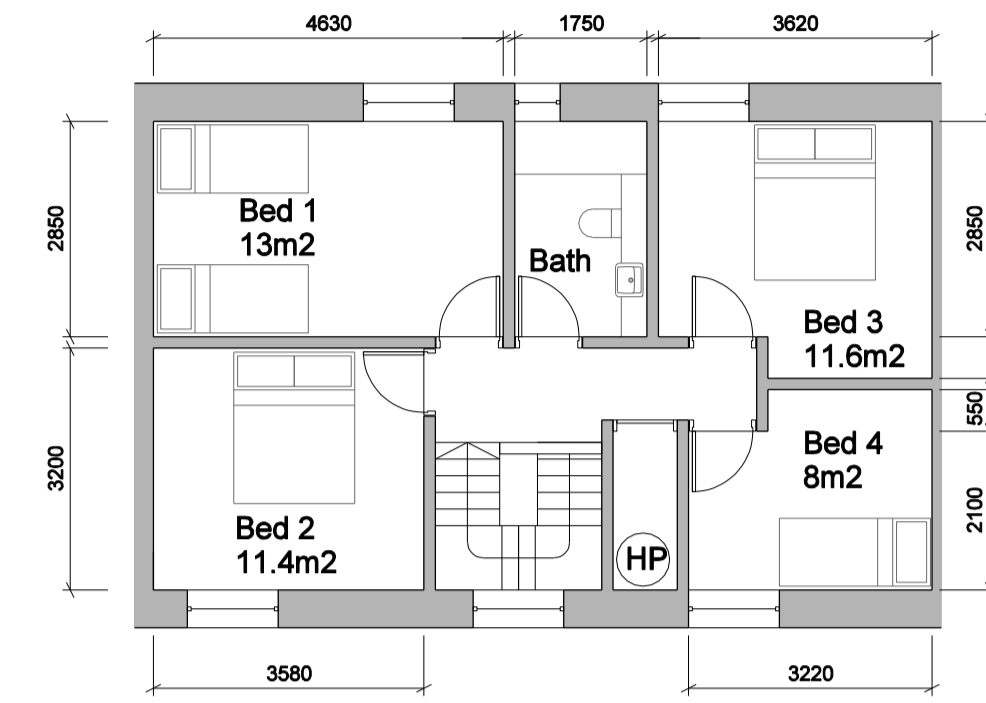
Ground Floor



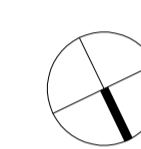
Front elevation
 Levels vary, refer 1:200 elevations



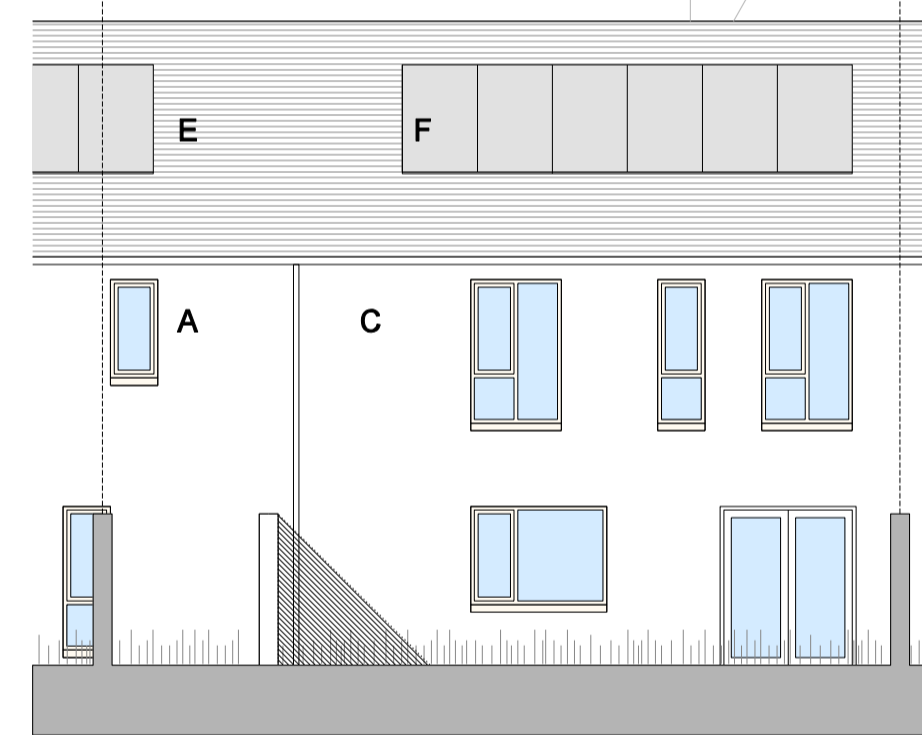
Key Plan - type G



First Floor



TOTAL AREAS
 GFA: 116.5m²
 Aggregate living area: 40m²
 Aggregate bedroom area: 44m²
 Storage: 6m²



Rear elevation

TYPE G & G2: 4 bed, 7 person

STATUS OF DRAWING

PLANNING APPLICATION PART VIII

ALL DIMENSIONS TO BE TAKEN FROM ARCHITECTS DRAWINGS
 DISCREPANCIES TO BE REFERRED TO THE ARCHITECT FOR CLARIFICATION

Key to materials
 A Render
 B Brick
 C Aluminium/wood windows & doors
 D Coloured panelling
 E Selected tile
 F Solar panels

ABK 34 Lower Leeson Street, Dublin 2 architects
 t: +353 1 678 9822
 f: +353 1 678 9296
 www.abk.co.uk

Project: Residential Development
 Church Road and Ladyswell, Mulhuddart

Title: House plans & elevations: types F, G
 Scale: 1:100@A1
 1:200@A3 Date: Sept 2016 By: CN Chk:

Drawing number:
 767 / PA 18

Status/Rev
 P1