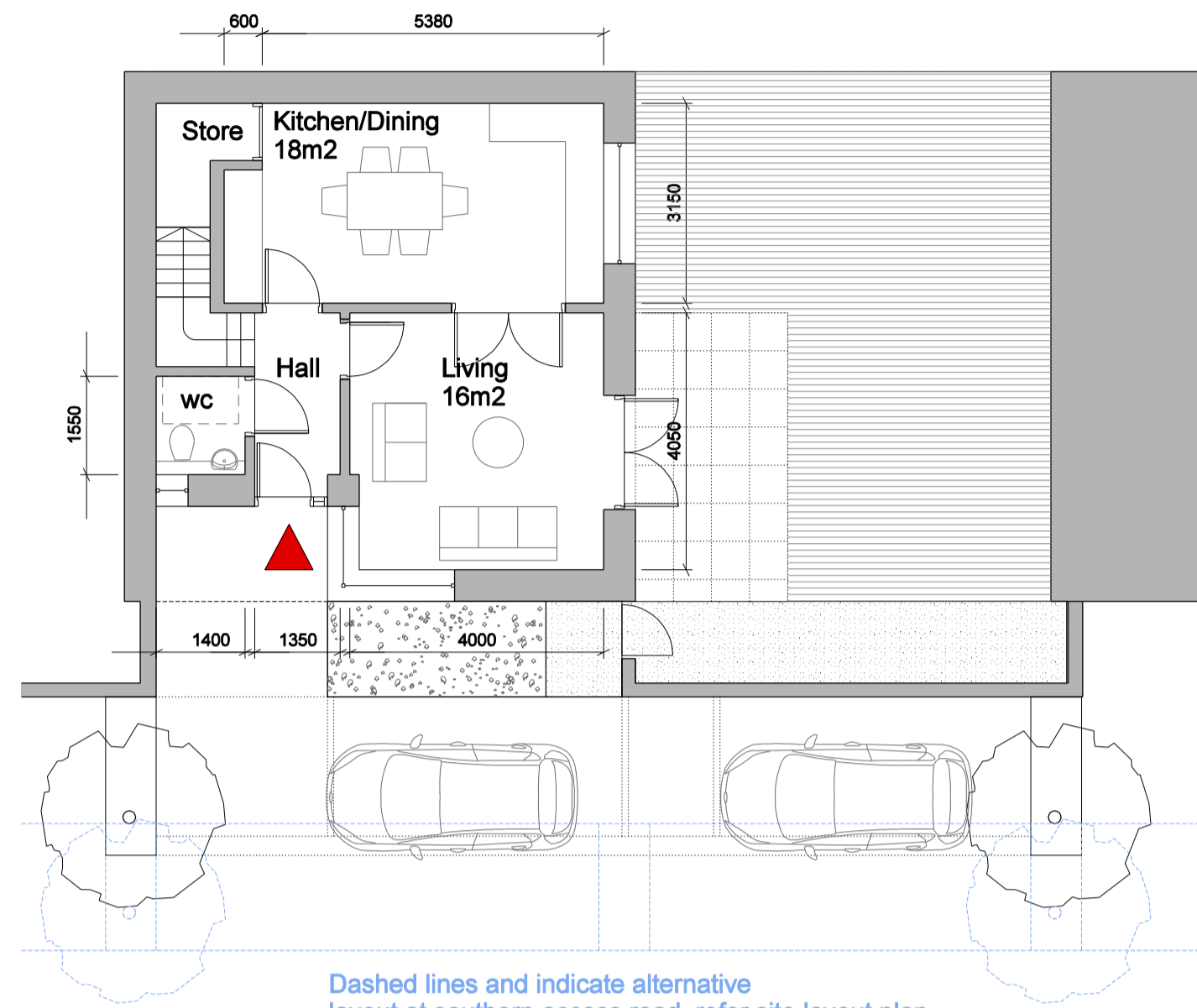
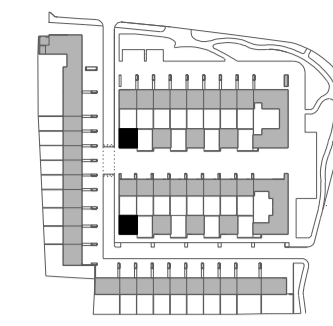


Key Plan

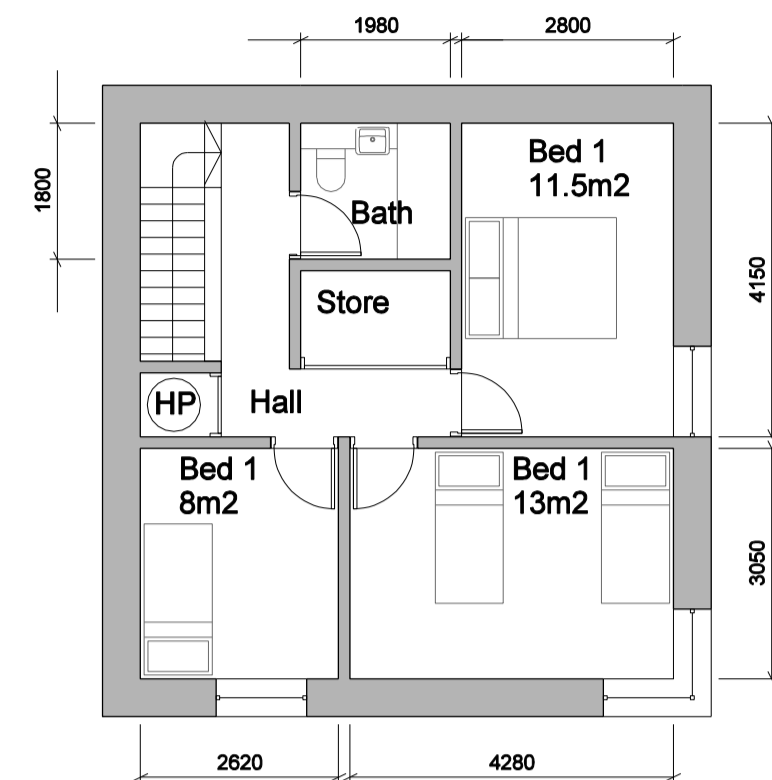


Ground Floor

Dashed lines and indicate alternative layout at southern access road, refer site layout plan

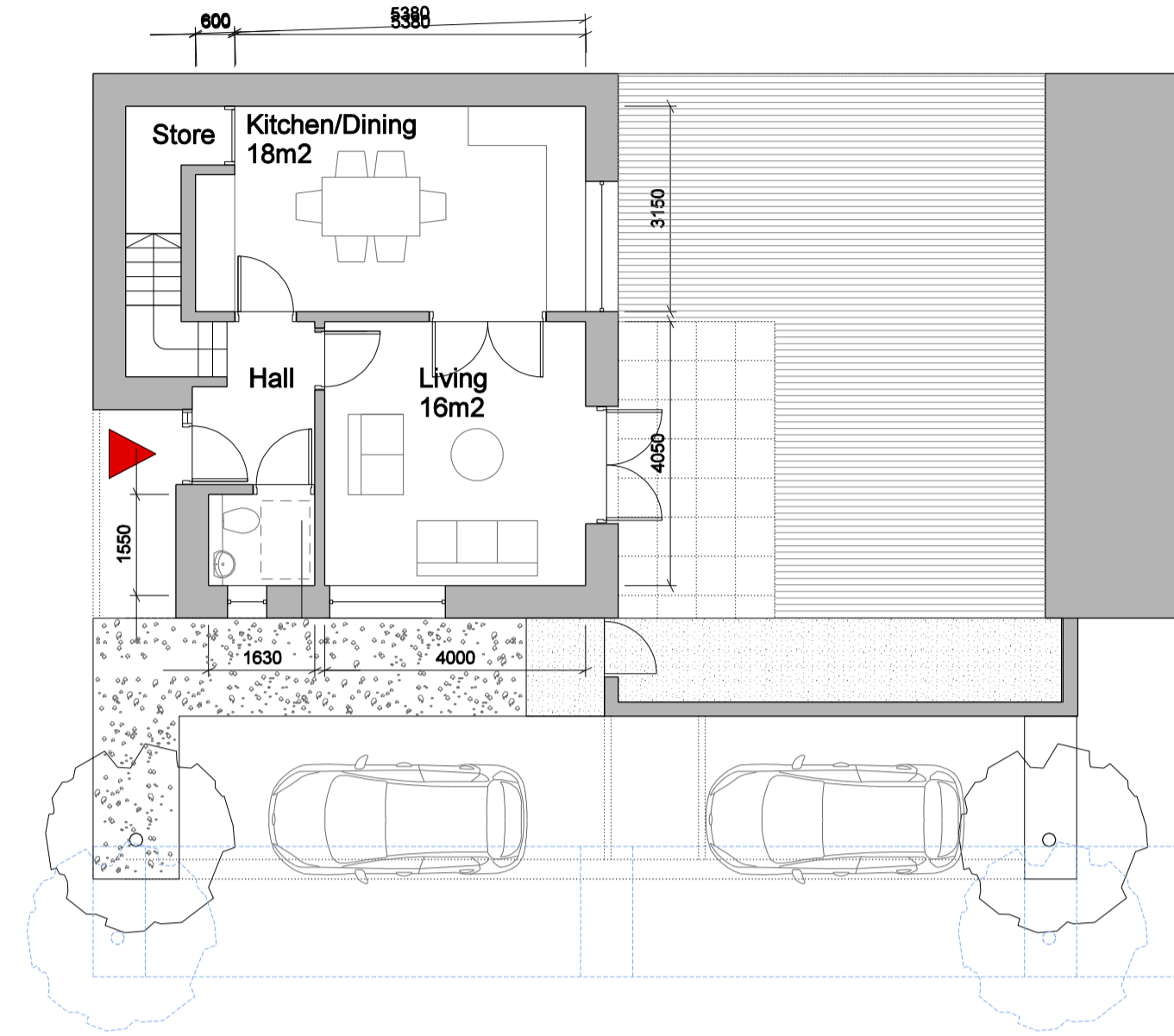


Key Plan - D2

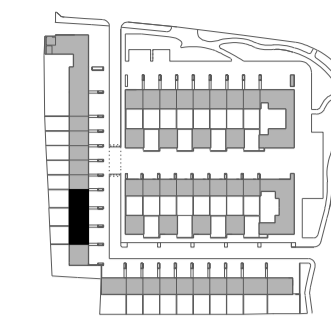


First Floor

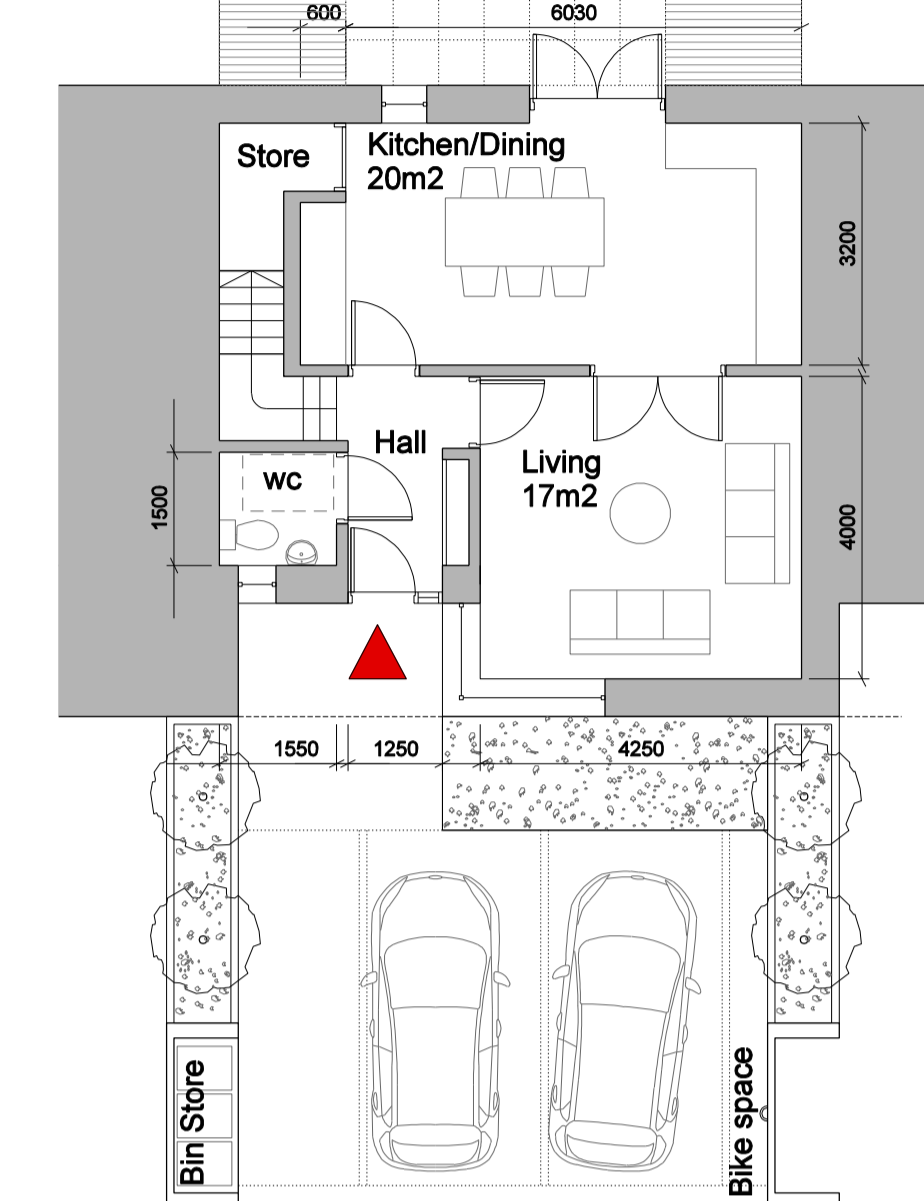
TOTAL AREAS
GFA: 94m2
Aggregate living area: 34m2
Aggregate bedroom area: 32.5m2
Storage: 5m2



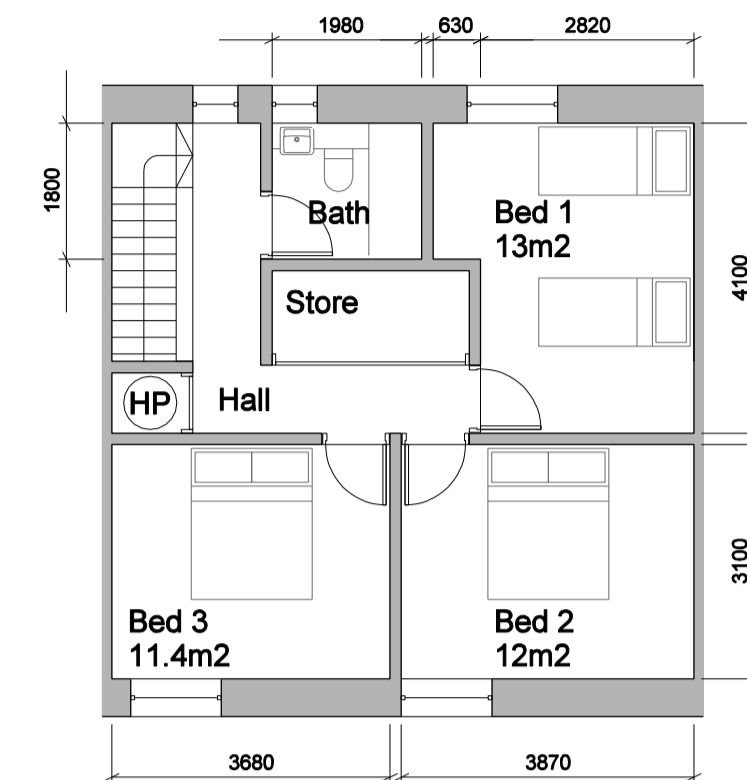
Ground Floor D2 - plan variation at corner of block



Key Plan

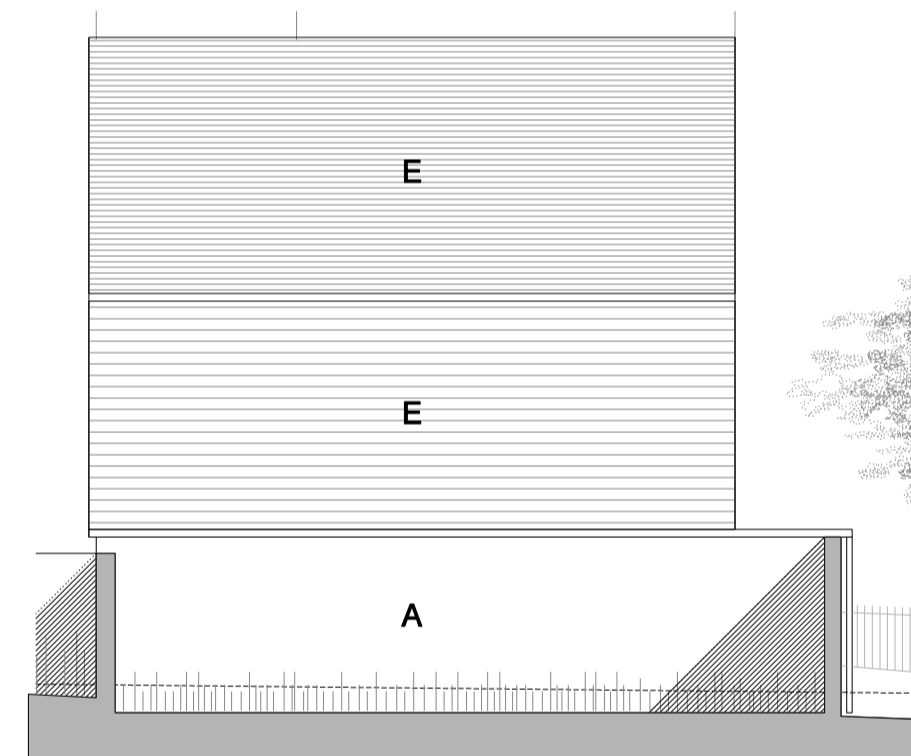


Ground Floor

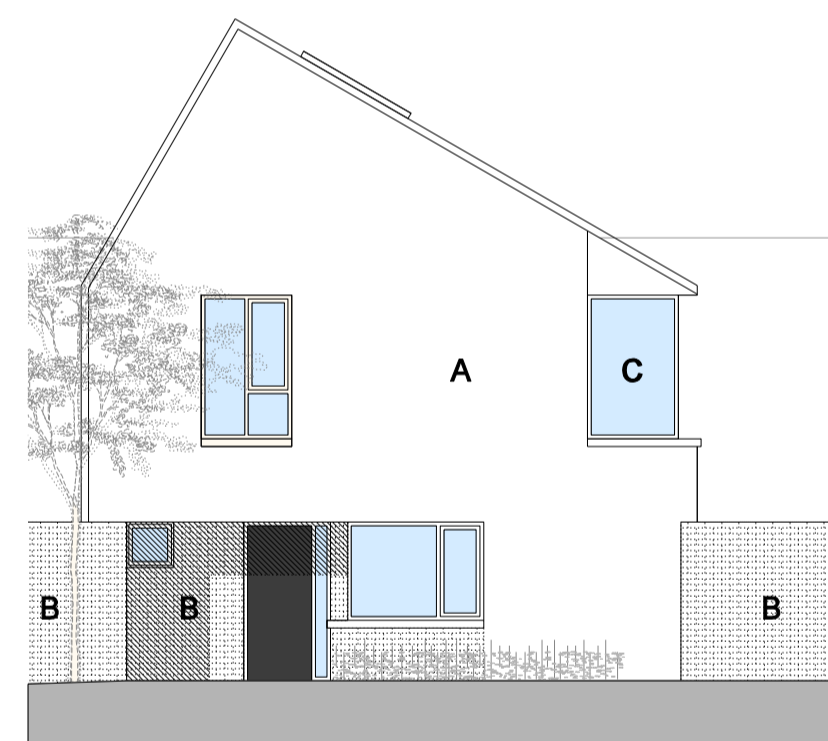


First Floor

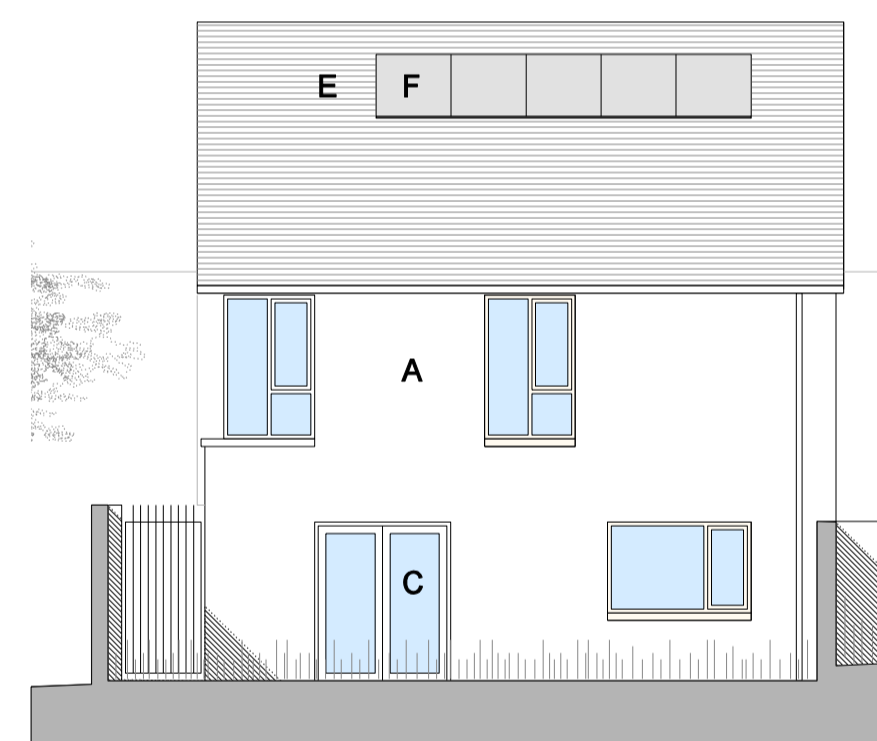
TOTAL AREAS
GFA: 107m2
Aggregate living area: 37m2
Aggregate bedroom area: 36.4m2
Storage: 6m2



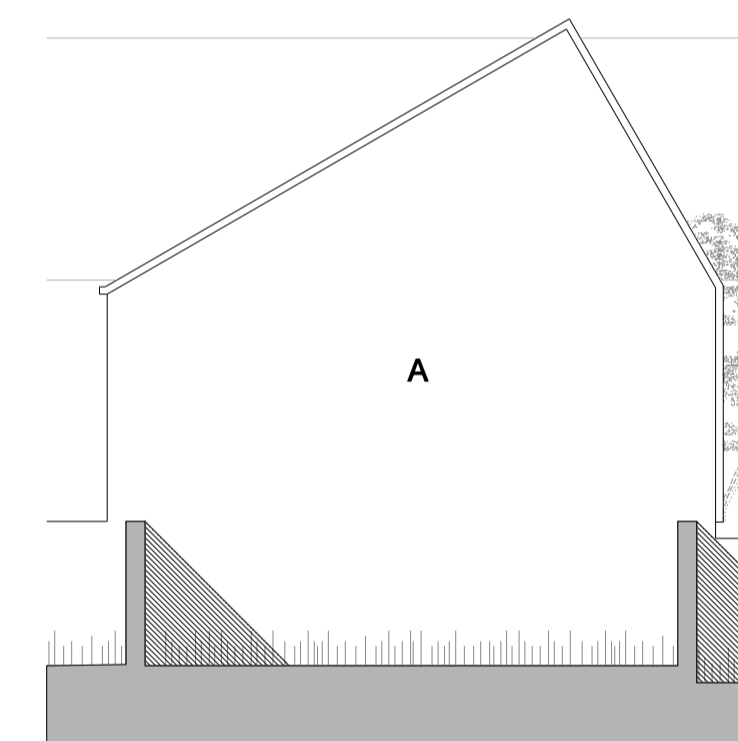
Side elevation to neighbour
Levels vary, refer 1:200 drawings



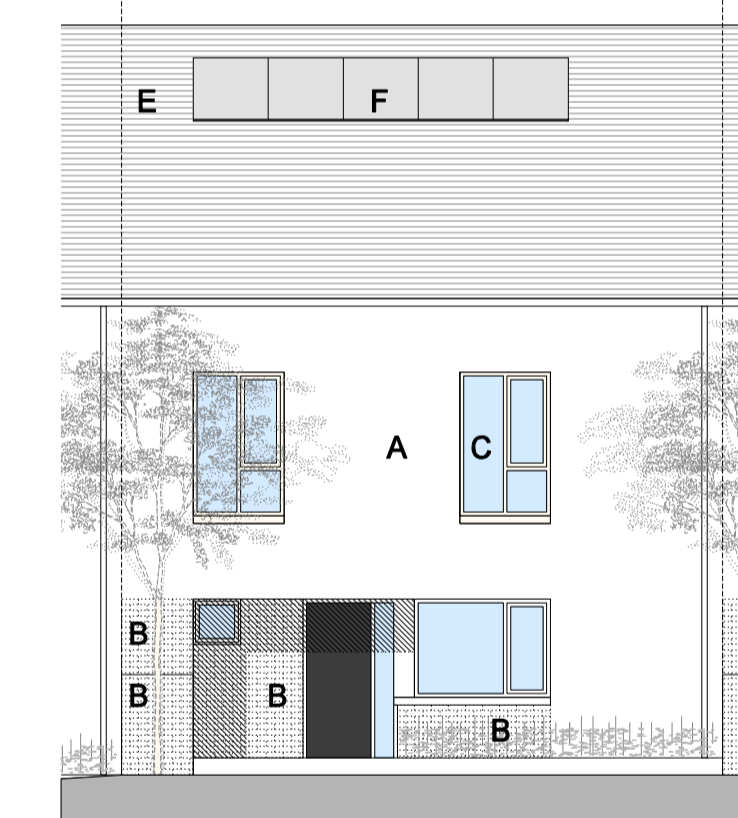
Front elevation



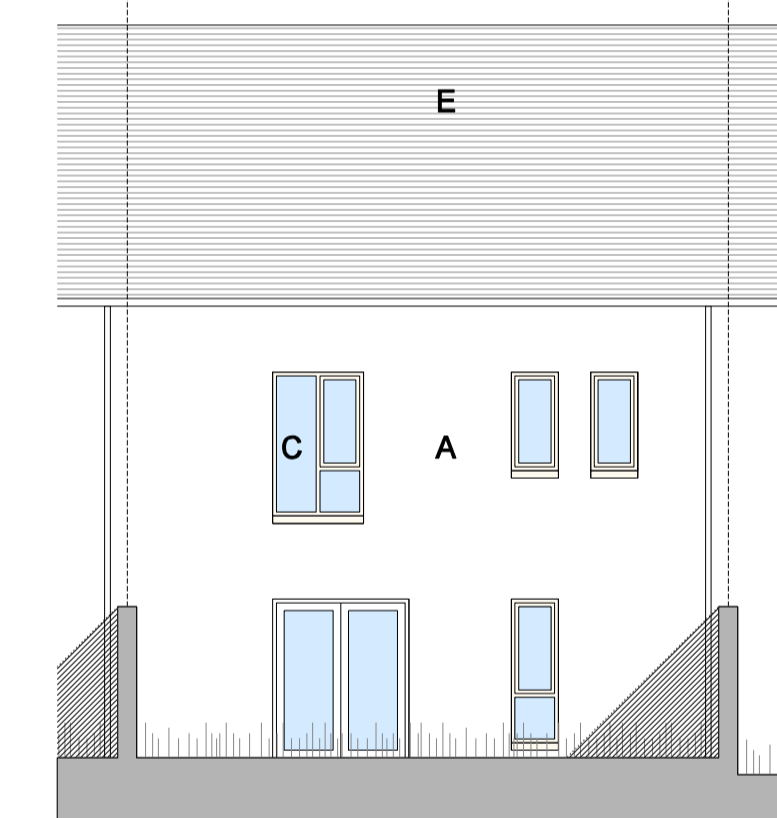
Side elevation to garden



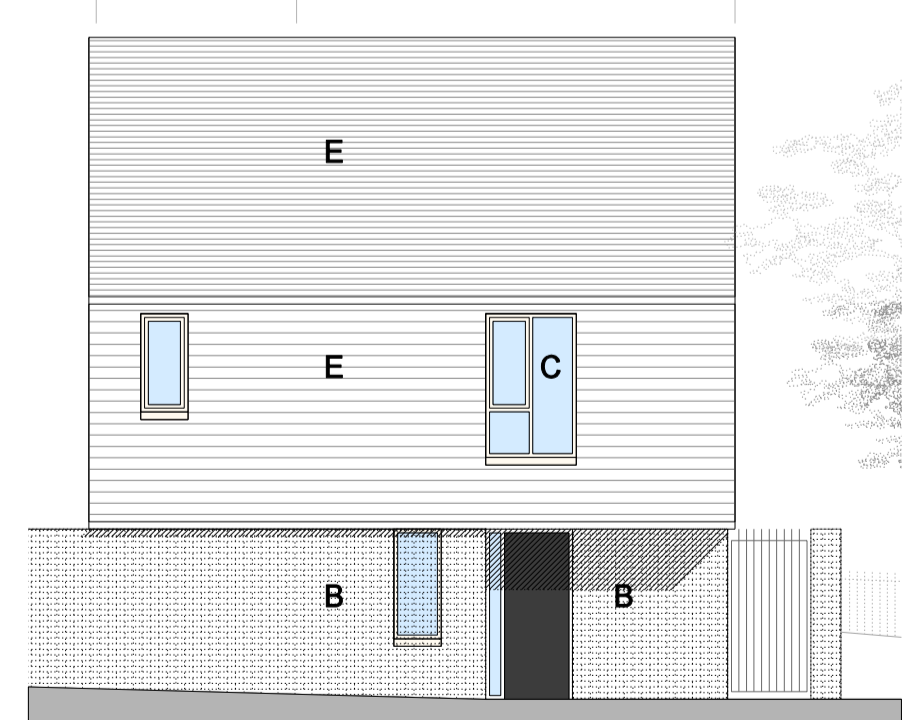
Rear elevation



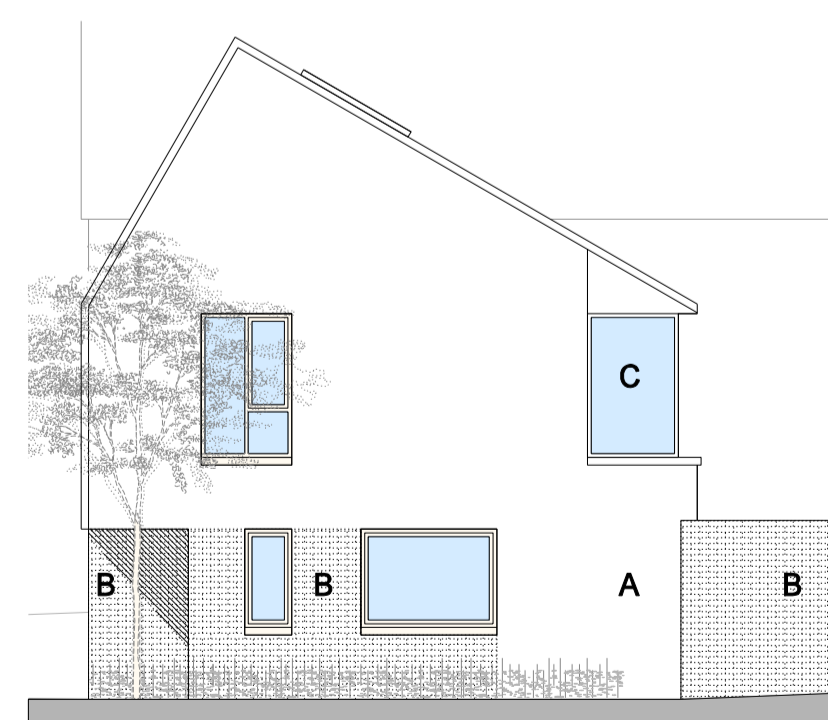
Front elevation
Levels vary, refer 1:200 drawings



Rear elevation



Side elevation D2 - variation at end of block



Front elevation D2 - variation at end of block

TYPE D & D2: 3 bed, 5 person

TYPE E: 3 bed, 6 person

Rev	Date	Description	By	Chk
P1	25.04.2017	Issued for Planning	AC	CN



STATUS OF DRAWING
PLANNING APPLICATION PART VIII

ALL DIMENSIONS TO BE TAKEN FROM ARCHITECTS DRAWINGS
DISCREPANCIES TO BE REFERRED TO THE ARCHITECT FOR CLARIFICATION

Key to materials

- A Render
- B Brick
- C Aluminium/wood windows & doors
- D Coloured panelling
- E Selected tile
- F Solar panels

ABK 34 Lower Leeson Street, Dublin 2
t: + 353 1 678 9822
f: + 353 1 678 9296
www.abk.co.uk architects

Project: Residential Development
Church Road and Ladyswell, Mulhuddart

Title: House plans & elevations: type D, D2, E

Scale: 1:100@A1 Date: Sept 2016 By: CN Chk:

Drawing number:
767 / PA 17

Status/Rev
P1