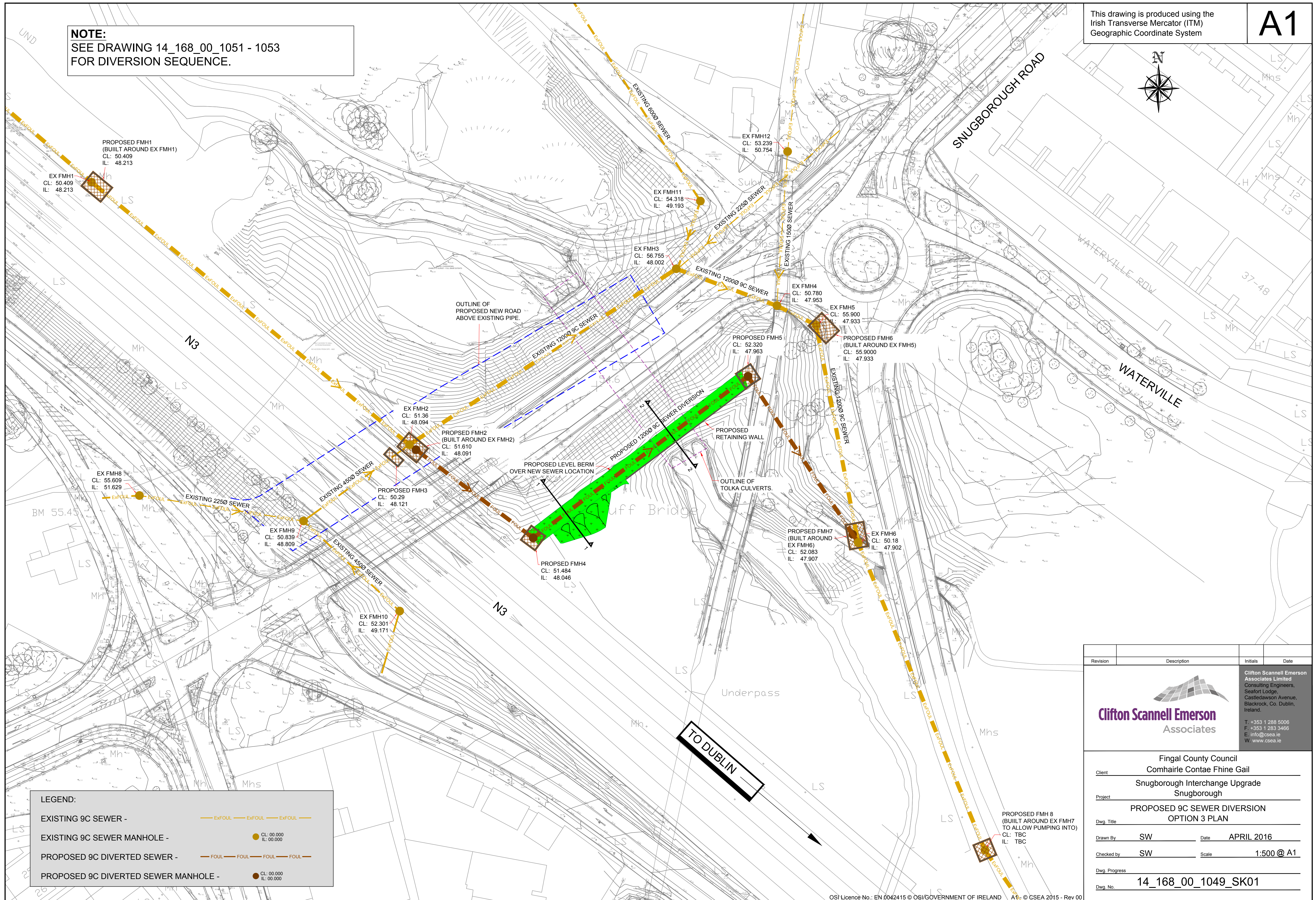
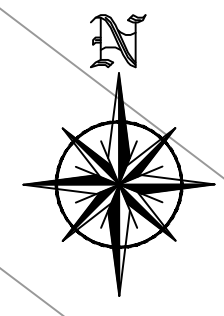
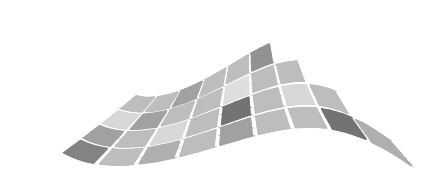


NOTE:
SEE DRAWING 14_168_00_1051 - 1053
FOR DIVERSION SEQUENCE.



LEGEND:

EXISTING 9C SEWER -	— EXFOUL — EXFOUL — EXFOUL —
EXISTING 9C SEWER MANHOLE -	● CL: 00.000 IL: 00.000
PROPOSED 9C DIVERTED SEWER -	— FOUL — FOUL — FOUL — FOUL —
PROPOSED 9C DIVERTED SEWER MANHOLE -	● CL: 00.000 IL: 00.000

Revision	Description	Initials	Date
 Clifton Scannell Emerson Associates			
Client: Fingal County Council Comhairle Contae Fhine Gail			
Project: Snugborough Interchange Upgrade Snugborough			
Dwg. Title: PROPOSED 9C SEWER DIVERSION OPTION 3 PLAN			
Drawn By: SW		Date: APRIL 2016	
Checked by: SW		Scale: 1:500 @ A1	
Dwg. Progress:			
Dwg. No.: 14_168_00_1049_SK01			