

House Type A - 1 Bed 2 Person Apartment - 1no	Target (m²)	Proposed (m²)
Gross Floor Area:	45	56
Living Room:	11	15.8
Aggregate Living Area:	23	26.3
Main Bedroom (double):	11.4	13
Aggregate Bedroom Area:	11	13
Storage:	3	3.4

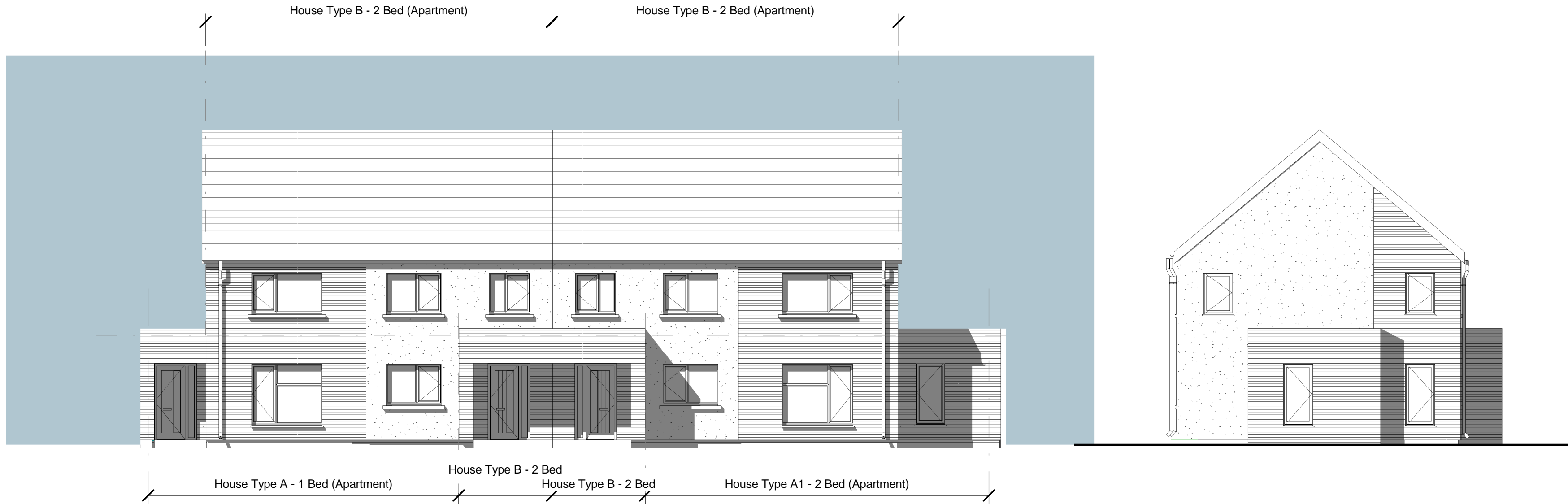
House Type A1 - 2 Bed 3 Person Apartment - 1no	Target (m²)	Proposed (m²)
Gross Floor Area:	63	65.73
Living Room:	13	15.5
Aggregate Living Area:	28	28
Main Bedroom 1 (double):	13	13
Bedroom 2 (single):	7.1	7.1
Aggregate Bedroom Area:	20	20.1
Storage:	3	3.5

House Type B - 2 Bed 3 Person Apartment - 2no	Target (m²)	Proposed (m²)
Gross Floor Area:	63	88.4
Living Room:	13	21.4
Aggregate Living Area:	28	29.2
Main Bedroom 1 (double):	13	13
Bedroom 2 (single):	7.1	8.2
Aggregate Bedroom Area:	20	21.2
Storage:	3	5.3

House Type C - 2 Bed 4 Person 2 Storey House - 6no	Target (m²)	Proposed (m²)
Gross Floor Area:	80	88.5
Living Room:	13	13.9
Aggregate Living Area:	30	31
Main Bedroom 1 (double):	13	13
Bedroom 2 (double):	11.4	14.6
Aggregate Bedroom Area:	25	27.6
Storage:	4	4

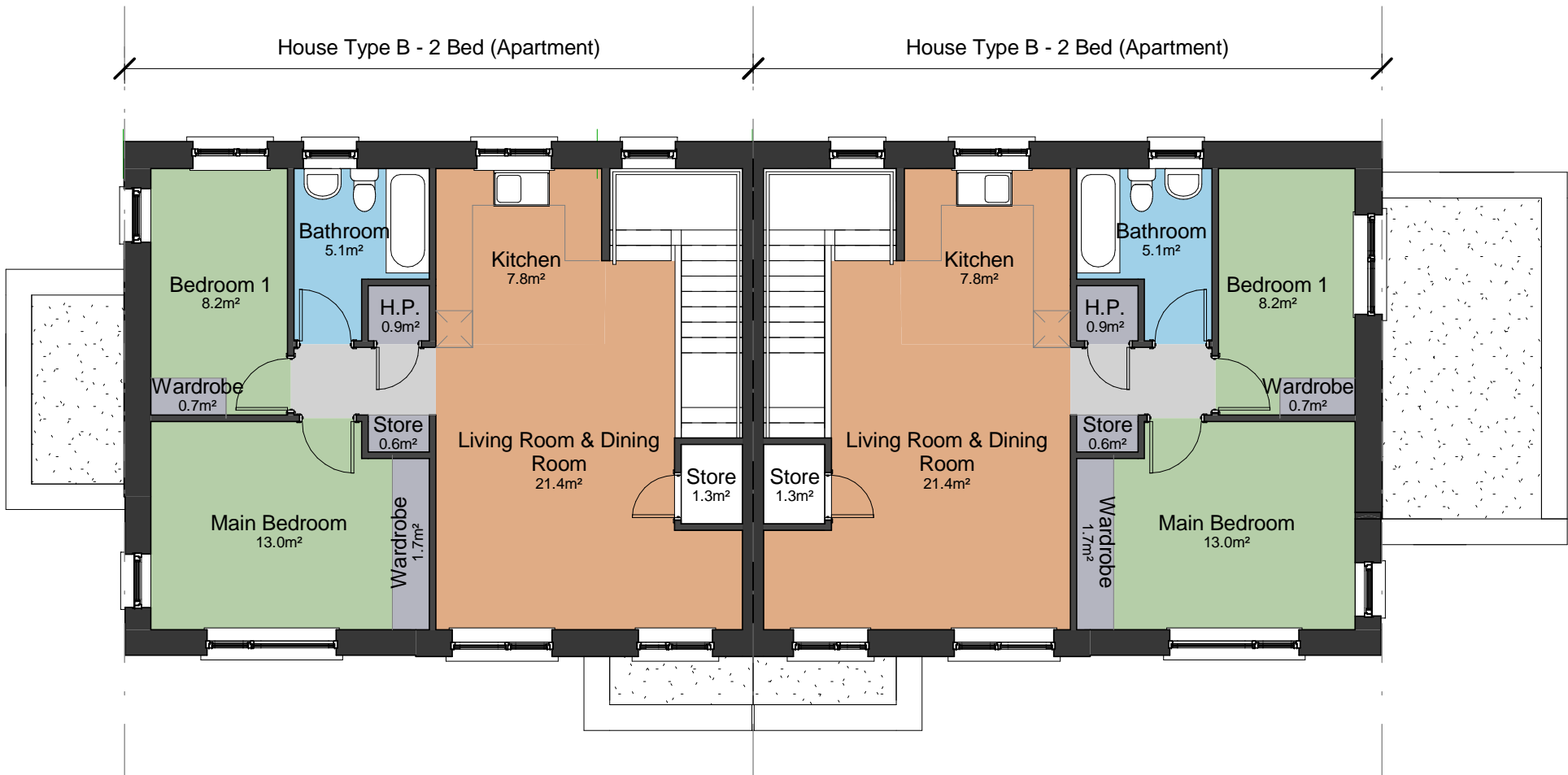
House Type D - 3 Bed 5 Person 2 Storey House - 11no	Target (m²)	Proposed (m²)
Gross Floor Area:	92	95.3
Living Room:	13	15.3
Aggregate Living Area:	34	35.8
Main Bedroom 1 (double):	13	13
Bedroom 2 (double):	11.4	11.5
Bedroom 3 (single):	7.1	7.1
Aggregate Bedroom Area:	32	31.6
Storage:	5	5

House Type E - 4 Bed 7 Person 2 Storey House - 3no	Target (m²)	Proposed (m²)
Gross Floor Area:	110	118.7
Living Room:	15	20.1
Aggregate Living Area:	40	40
Main Bedroom 1 (double):	13	13
Bedroom 2 (double):	11.4	11.5
Bedroom 3 (double):	11.4	11.4
Bedroom 4 (single):	7.1	7.1
Aggregate Bedroom Area:	43	43
Storage:	6	6.2



Block A - Front Elevation
1 : 100

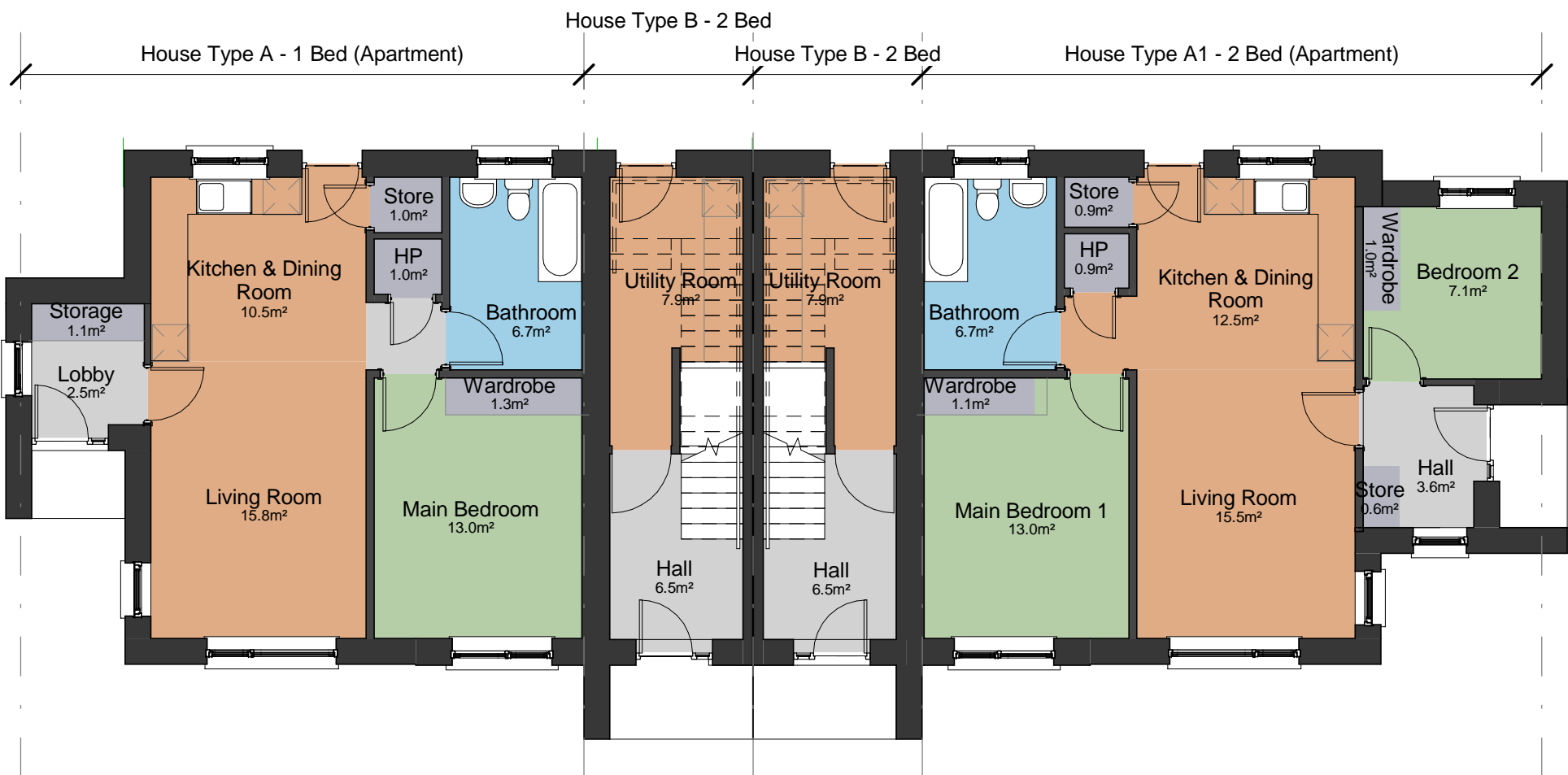
Block A - Side Elevation 2
1 : 100



Block A - First Floor Plan
1 : 100



Block A - Side Elevation 1
1 : 100



Block A - Ground Floor Plan
1 : 100

- Living Areas
- Bedrooms
- Bathrooms
- Storage
- Circulation

Comhairle Contae
Fine Gall
Fingal County
Council



Architects Department
County Hall, Main Street, Swords, Co Dublin.

County Architect: Fionnuala May Dip.Arch B.Arch.Sc. MUBC MRIAI

Tel: 01 890 5050 architects@fingal.ie

Client

Fingal County Council
Housing Department

Project Title

24 no Dwellings at
Rathbeale Road, Swords,
Co. Dublin

Drawing Title

House Type Areas, Block
A - Plans & Elevations

Project number 08-111

Project stage P

Date December 2016

AP

Drawn by

FCC Architects

Project Team

Scale 1 : 100

Drawing number Revision number

08-111 - P - 002 A