

Zoning Objectives

CI - Community Infrastructure	Provide for and protect civic, religious, community, education, health care and social infrastructure
GB - Greenbelt	Protect and provide for a Greenbelt
GE - General Employment	Provide opportunities for general enterprise and employment
HA - High Amenity	Protect and enhance high amenity areas
LC - Local Centre	Protect, provide for and/or improve local centre facilities
OS - Open Space	Preserve and provide for open space and recreational amenities
RA - Residential Area	Provide for new residential communities subject to the provision of the necessary social and physical infrastructure
RB - Rural Business	Provide for and facilitate rural-related business which has a demonstrated need for a rural location
RC - Rural Cluster	Provide for small scale infill development serving local needs while maintaining the rural nature of the cluster
RS - Residential	Provide for residential development and protect and improve residential amenity
RU - Rural	Protect and promote in a balanced way, the development of agriculture and rural-related enterprises, biodiversity, the rural landscape, and the built and cultural heritage
TC - Town and District Centre	Protect and enhance the special physical and social character of town and district centres and provide and/or improve urban facilities

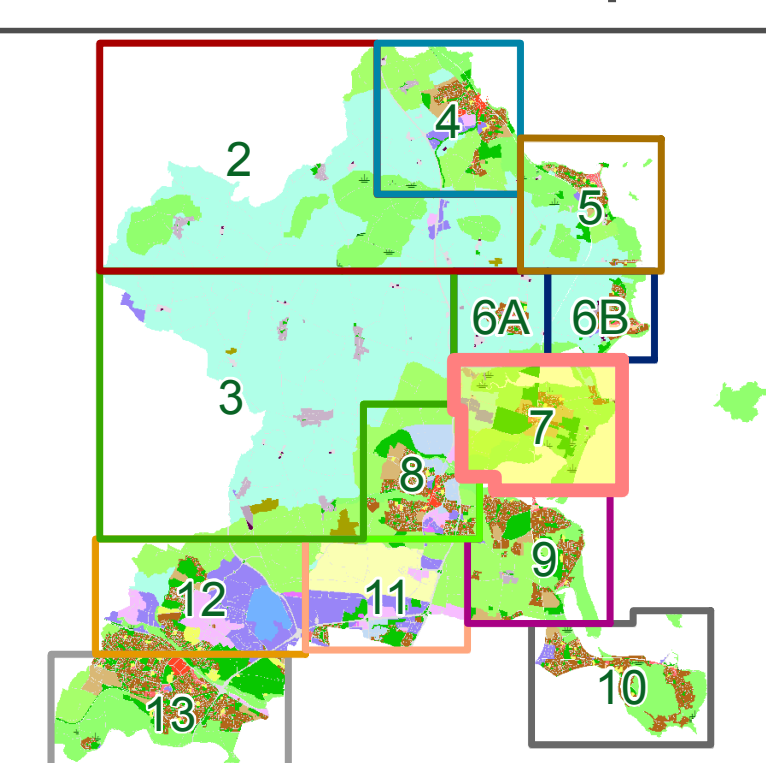
Specific Objectives

Architectural Conservation Area	
Burial Site	
Density Boundary	
Development Boundary	
Urban Framework Plan	
Masterplan Area	
Subject to Local Area Plan	
Indicative Cycle/Pedestrian Route	
Quality Bus Corridor	
Road Proposal	
To Preserve Views	
Local Objective Points	
Protected Structures	
Recorded Monuments	
Coastal Walk	
Provide for residential development at a density per hectare as shown	
Proposed School	
Protect & preserve Trees, Woodlands and Hedgerows	

PA SH 7.1 Proposed Amendment

Note: For further detail please refer to the Written Statement, Written Statement Appendices and the Green Infrastructure Maps. To view details of Recorded Monument and Places Areas see www.archaeology.ie/publications-forms-regulation/record-of-monuments-and-places

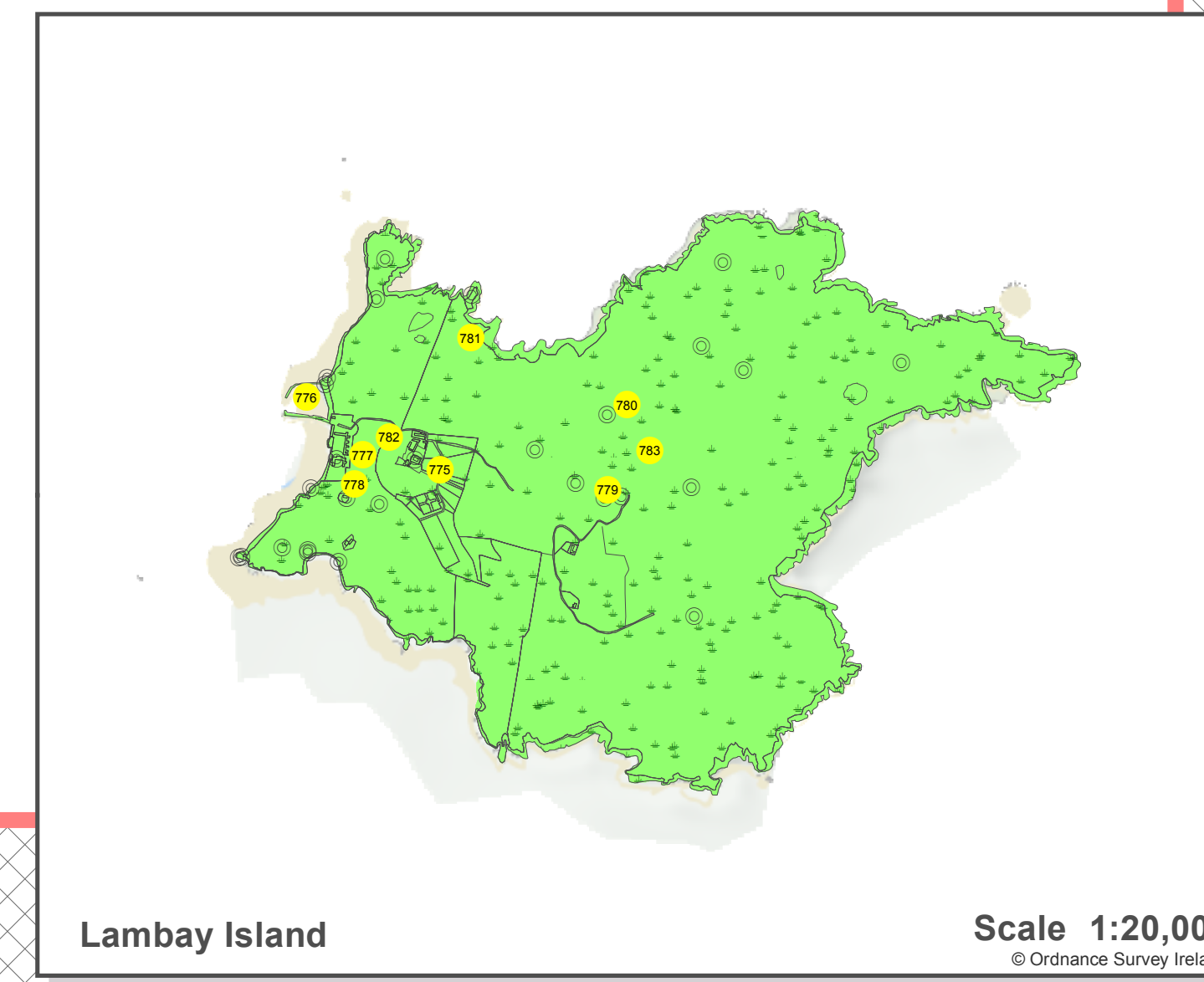
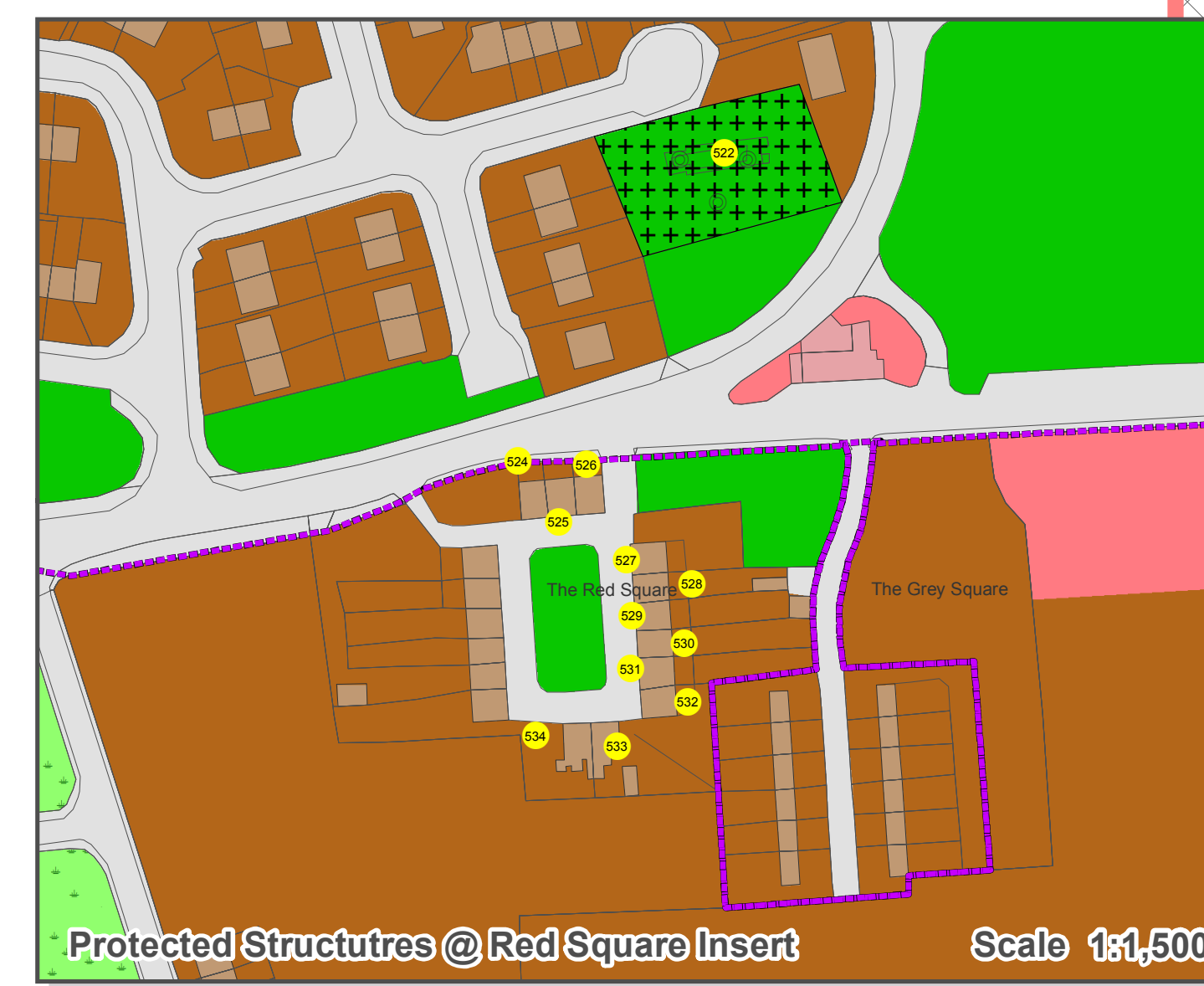
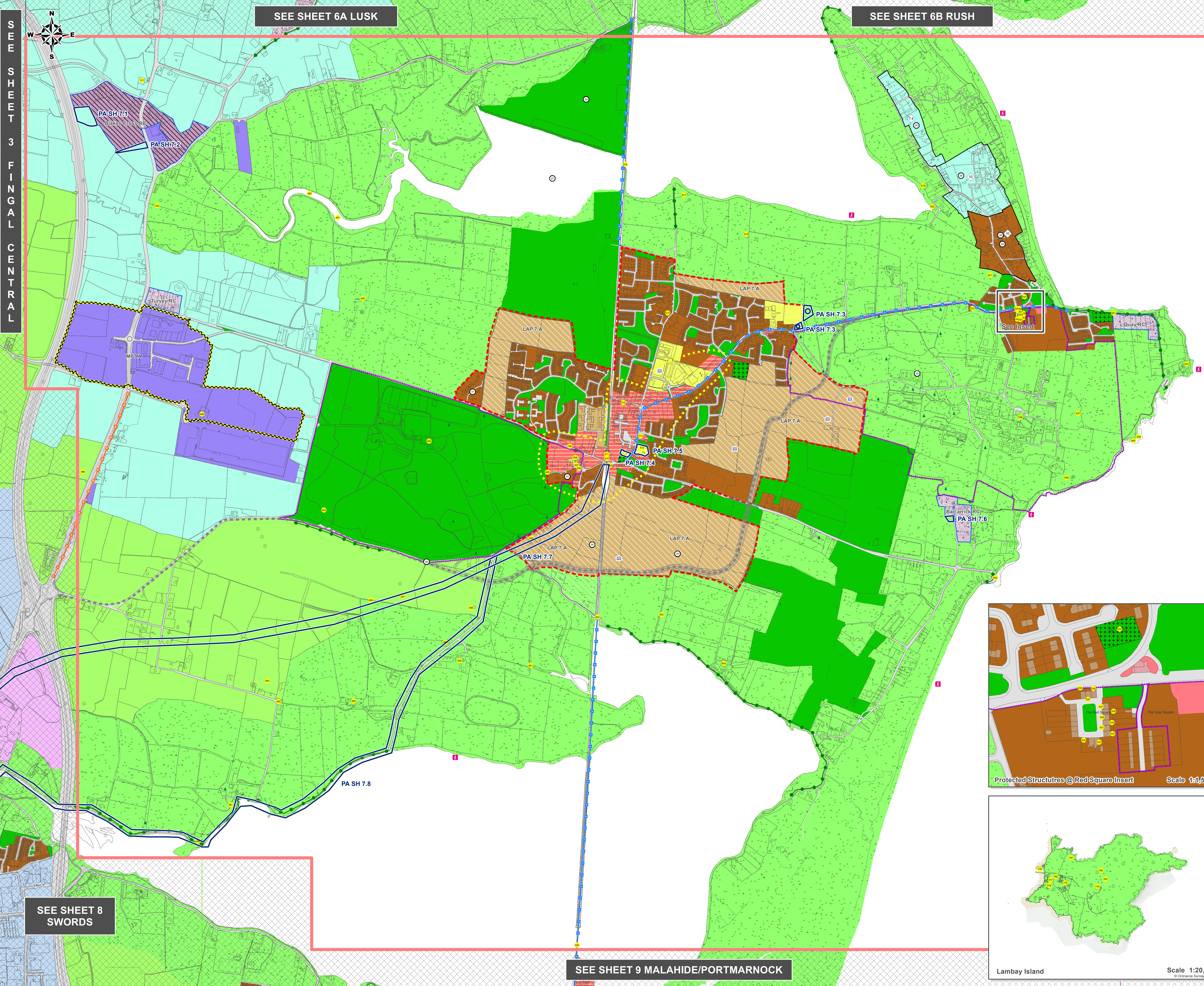
Sheet Index Map



Fingal Development Plan 2017-2023

Be part of it.

Comhairle Contae Fhine Gall Fingal County Council
 An Boinn um Pleanáil agus Infreastruicteoirí
 Director of Services: Ann Marie Farrelly Date: November 2016
 Senior Planner: Matthew McAleese Scale @ A0: 1:7,500



Proposed Amendments	Insert Local Objective:	PA SH 7.4	PA SH 7.5	PA SH 7.6	PA SH 7.7	PA SH 7.8
PA SH 7.1 Amend zoning from Objective RU 'Rural' to Objective RB 'Rural Business' at Blake's Cross.	Provide pedestrian and vehicular access to a designated school set down area to serve St Patrick's National Schools.	Amend zoning from Objective CI 'Community Infrastructure' to Objective TC 'Town Centre' at St Patrick's Church Hall (west side of the Main Street).	Amend zoning from Objective CI 'Community Infrastructure' to Objective TC 'Town Centre' at St Patrick's Church lands (east side of Main Street).	Amend zoning from Objective HA 'High Amenity' to Objective RC 'Rural Cluster' at Balcarrick, Donabate.	Add public transport reservation - Swords to Donabate.	Insert looped Walkway incorporating the Broad Meadow estuary.
PA SH 7.2 Amend zoning from Objective RU 'Rural' to Objective RB 'Rural Business' at Blake's Cross.	(Motion No. A1029128 and A1029131, Agenda Item Nos. 452 and 453). Amend zoning from Objective HA 'High Amenity' to Objective CI 'Community Infrastructure' east of the existing National Schools.					
PA SH 7.3 Amend zoning of lands south of the 'CI' zoning at St Patrick's National School fronting the Portrane Road, from Objective HA 'High Amenity' to Objective CI 'Community Infrastructure'.	Insert Local Objective: Provide a designated school set down area and Place(s) of Worship.					
		PA SH 7.4	PA SH 7.5	PA SH 7.6	PA SH 7.7	PA SH 7.8