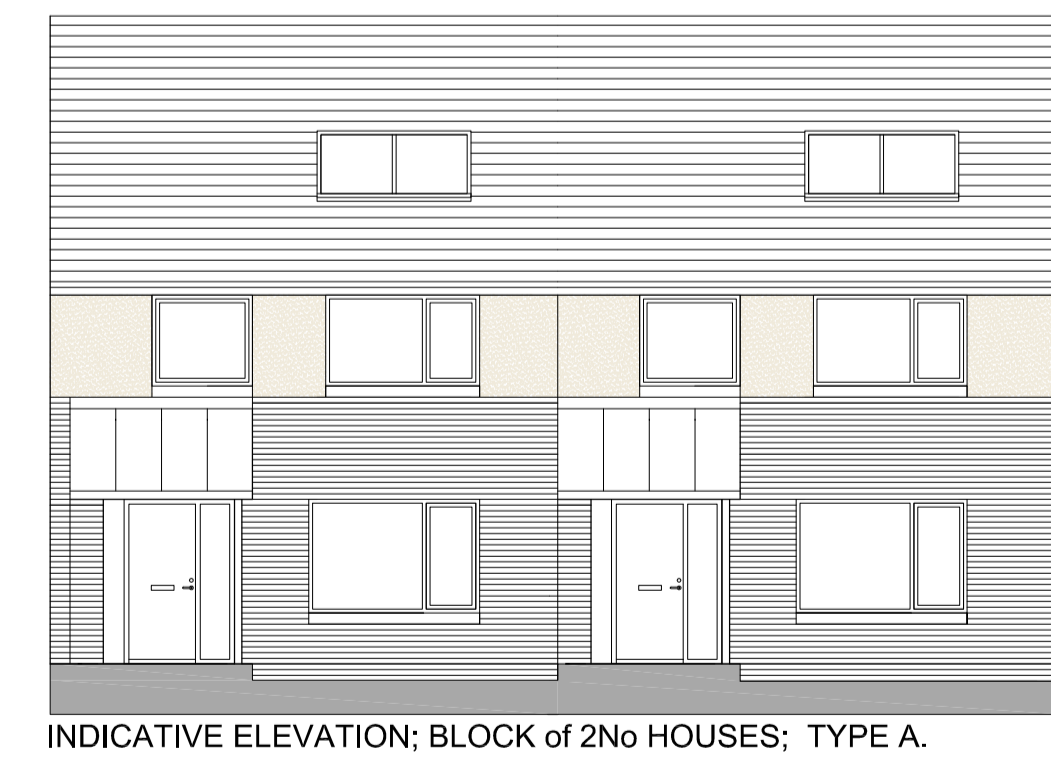
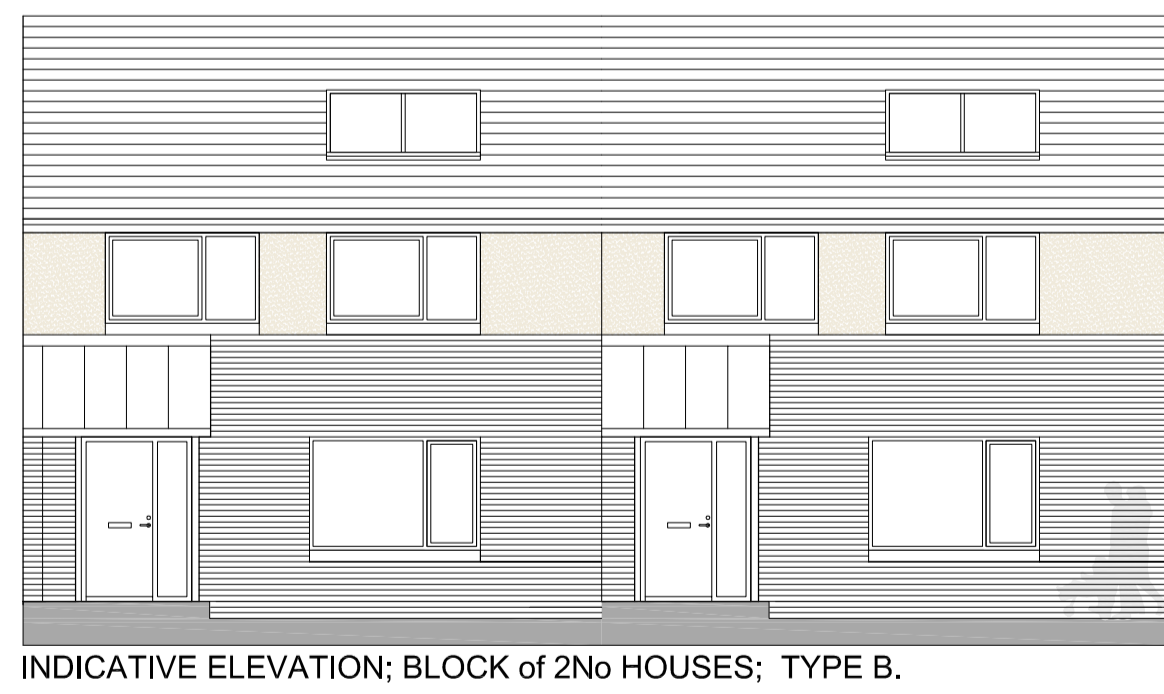


HOUSE TYPE C: 1 Bedroom, 2 Person (1 storey)		
	Proposed (m ²)	Target (m ²)
Gross floor area	51	44
Living Room	11	11
Kitchen	12.1	--
Aggregate Living	23.1	23
Bedroom 1	13.4	11.4
Storage	2	2

HOUSE TYPE A : 3 Bedroom, 5 Person (2 storey)		
	Proposed (m ²)	Target (m ²)
Gross floor area	105	92
Living Room	16	13
Kitchen	18	--
Aggregate Living	34	34
Bedroom 1	14	11.4
Bedroom 2	12	11.4
Bedroom 3	7.8	7.1
Aggregate Bedroom	33.8	32
Storage	7.6	5

HOUSE TYPE B: 2 Bedroom, 4 Person (2 storey)		
	Proposed (m ²)	Target (m ²)
Gross floor area	88	80
Living Room	17	13
Kitchen	14	--
Aggregate Living	31	30
Bedroom 1	13.6	11.4
Bedroom 2	12.7	11.4
Aggregate Bedroom	26.3	25
Storage	4.2	4



Comhairle Contae Fhine Gall
Fingal County Council

ARCHITECTS' DEPARTMENT
FINGAL COUNTY HALL, MAIN ST.,
SWORDS CO., DUBLIN
Tel: (01)890 5050, Fax: (01) 890 5079

COUNTY ARCHITECT
FIONNUALA MAY Dip.Arch., B.Arch. Sc., M.U.B.C., M.R.I.A.I

CLIENT
Housing Department

PROJECT TITLE
24 rapid build Dwellings & Community Room
at Pinewood, Balbriggan, Co Dublin.

PROJECT STAGE
Planning Part X1

DRAWING TITLE
UNIT PLANS & ELEVATIONS

PROJECT ARCHITECT
David Byrne

DRAWN
FGM

CHECKED

SCALE
1:100 @A1

DATE
June 2016

DRAWING NUMBER
15-318-P-03

REV