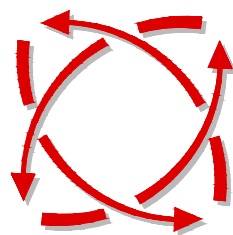


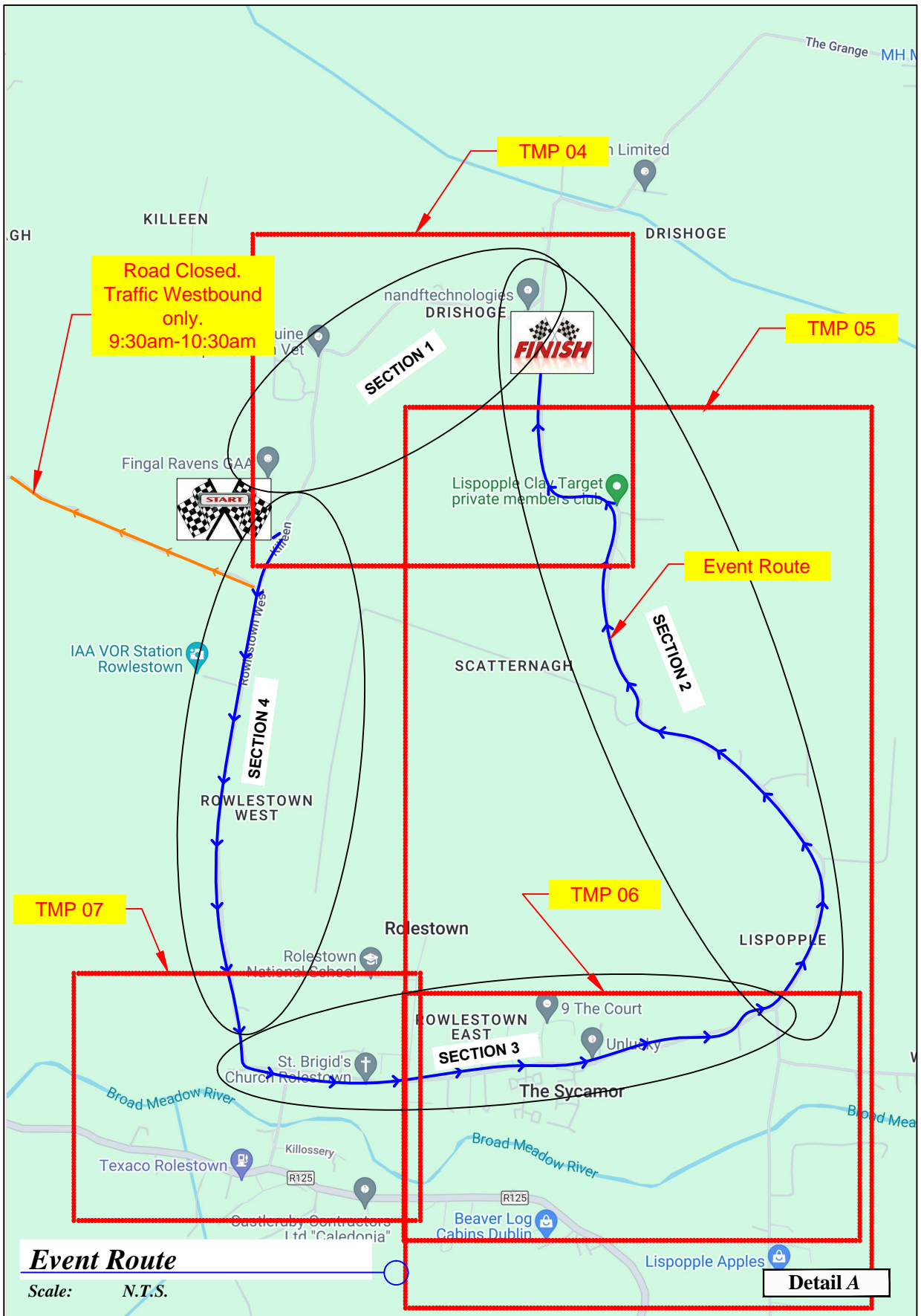
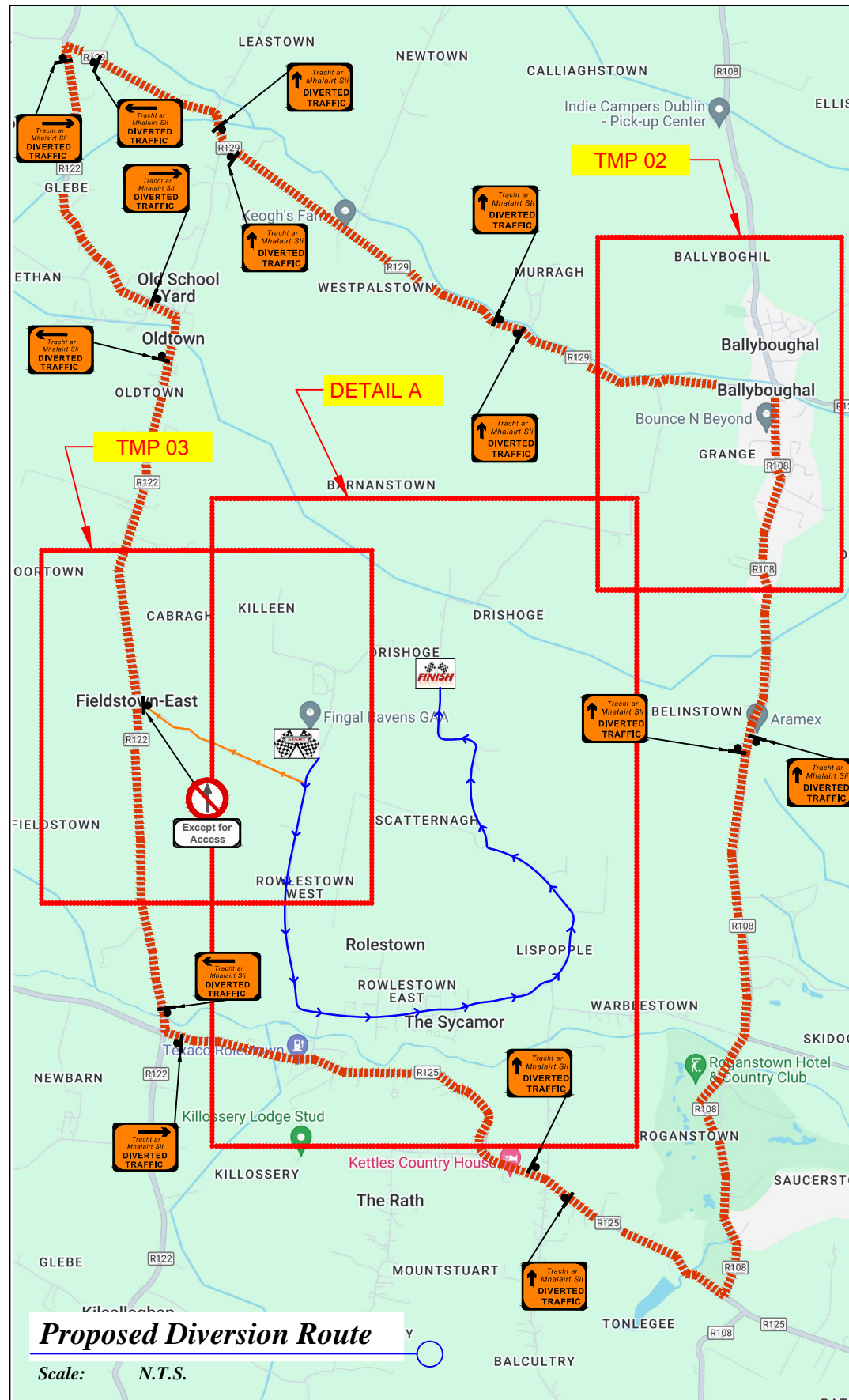
***PROPOSED TRAFFIC
MANAGEMENT SCHEME***

for

***TMP for Rolestown 5K Community Fun Run
on
Sunday 19th May @ 10am***



***FREEFLOW
TRAFFIC
MANAGEMENT***



LEGEND

- Sign Location
- Run Route
- Diversion route both directions
- Traffic Flow
- Traffic Management Operative
- Approved Barrier

Works TTM type:	Static Type A				
	Design Type A: >12h				
Design Parameters:	LV-1 (I)	LV-1 (III)	LV-1 (IV)	LV-2 (I)	LV-2 (II)
1. Minimum Sign Size mm	450	600	600	600	750
2. Statutory Speed of the Road	30km/h	50	60	80	100
3. Distance between Advance Signs	10m	20m	20m	120m	200m
4. Number of Advance Signs	3 (<12h) 2 (>12h)	2	3 (<12h) 2 (>12h)	3 (<12h) 4 (>12h)	4 (<12h) 4 (>12h)
5. Minimum Visibility of Signs	25m	50m	60m	90m	120m
6. Longitudinal Safety Zone	0.5m	5m	15m	45m	60m
7. Lateral Safety Zone	0.5m	0.5m	0.5m	1.2m	1.2m
8. Leading Taper	1in1m	1in5m	1in10m	1in40	Lane-Width 10x-15x20
9. Maximum at Tapers Cone Space	1m	3m	3m	3m	3m
10. Maximum Longitudinal Cone Space	3m	3m	6m	12m	12m
11. Lane Width (m)	2.5m	3 (2.5)	3 (2.5)	3 m	3 m
12. Two-way Roadway width (m)	5m	5m	5m	-	-

Note:

- All signs to comply with Chapter 8 of the "Traffic Signs Manual"-Guidance Document-2019.
- All Traffic Management to be carried out in accordance with Chapter 8 of the "Traffic Signs Manual".
- Detailed Risk Assessment to be carried out prior to the installation of Traffic Management System.
- Exact sign positions to be agreed on site.
- All affected Parties and An Garda Siochana to be notified prior to works commencing.
- Signs to be positioned so as not to cause an obstruction to other road users.
- All signs to be faced with retro-reflective material to class ref 2 of EN 12899.
- "End of Roadworks" sign placed 20m to 50m from end of works area.
- Road Closure points to be manned.
- The Lead Escort Vehicle will ensure road is clear for lead runners and Trail Escort Vehicle will follow the final walking group.
- Traffic control points will be removed once the Trail Escort Vehicle passes.
- Pedestrians, Emergency Vehicles and local access will be facilitated by local marshals. Diversion signage and marshals will be in place for the duration of the closure. Passing of trail vehicle will enable road to reopen by Marshals.

Proposed Diversion Route

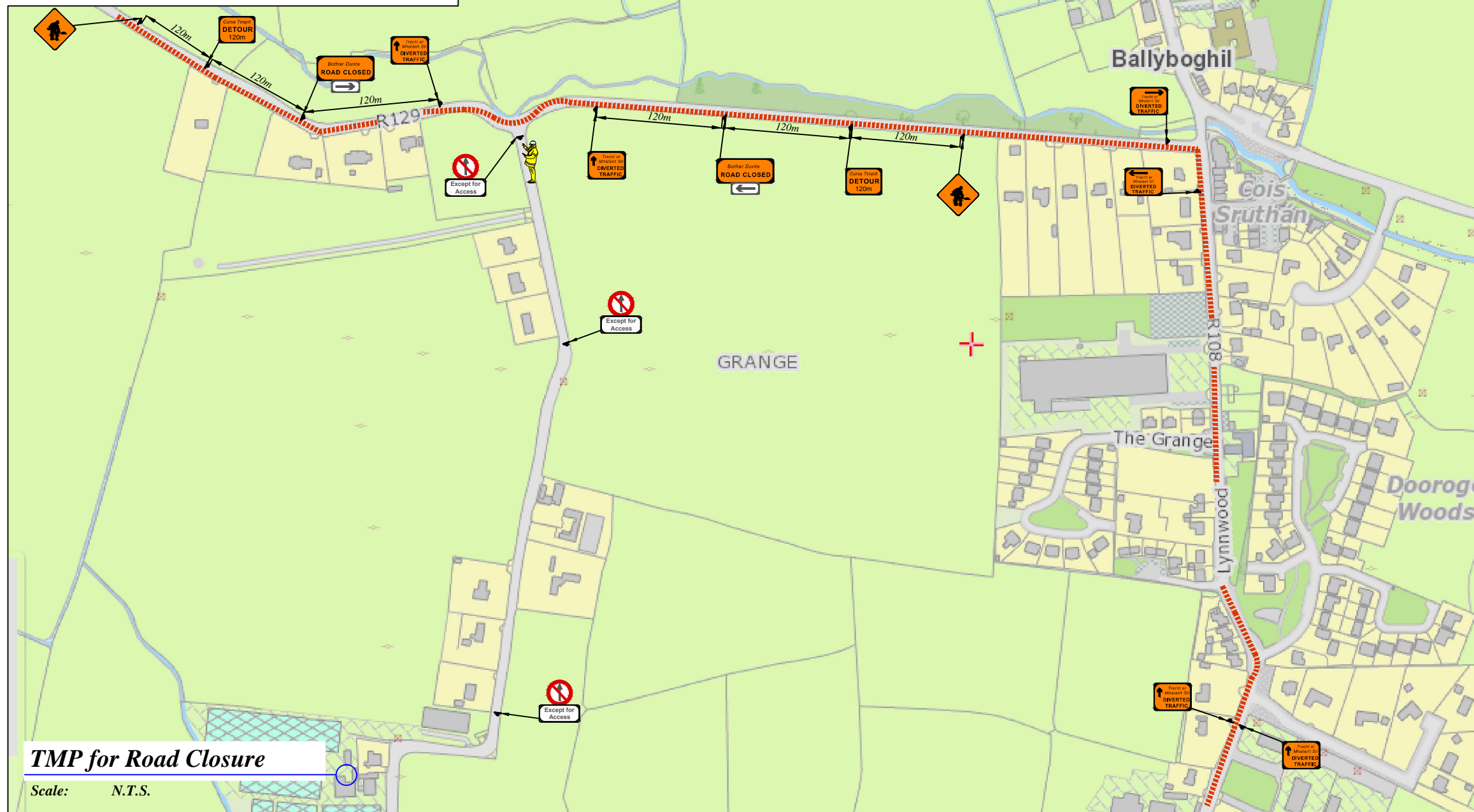
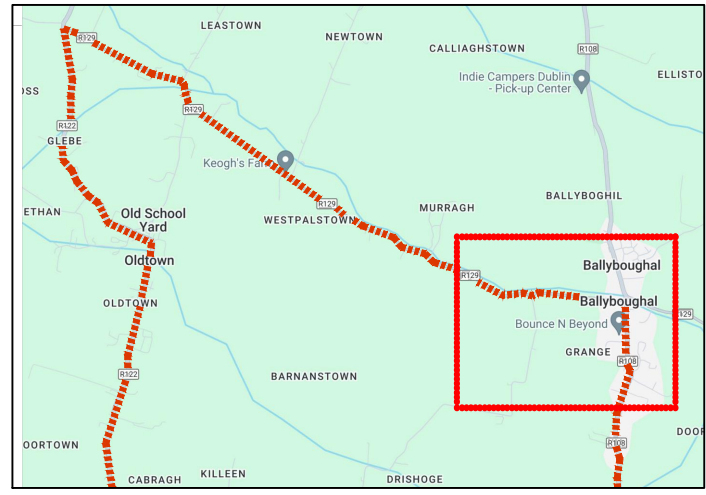
Scale: N.T.S.

Event Route

Scale: N.T.S.









Rev:	Description:	Date:	Job Details:	Drawing:	Dwg no:
			Proposed Traffic Management Plan for Rolestown 5K Community Fun Run 2024	Proposed Event Route	01
			Sheet:	Drawn By:	Rev:
			CAD File ref.:	DM	01
				Date:	Scale:
					As Shown



TMP for Road Closure

Scale: N.T.S.

LEGEND

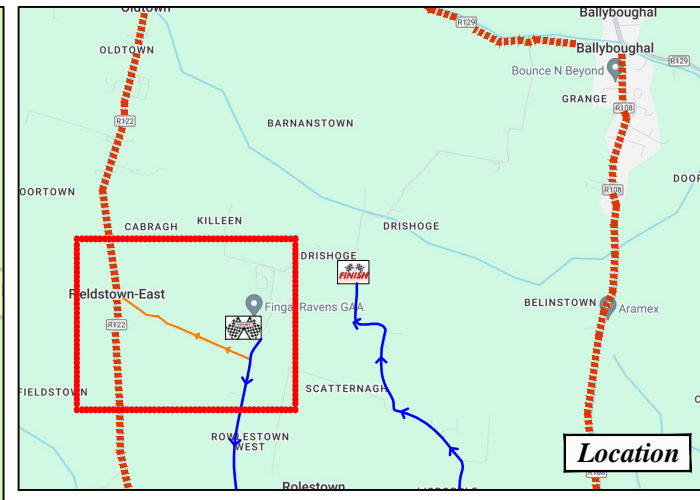
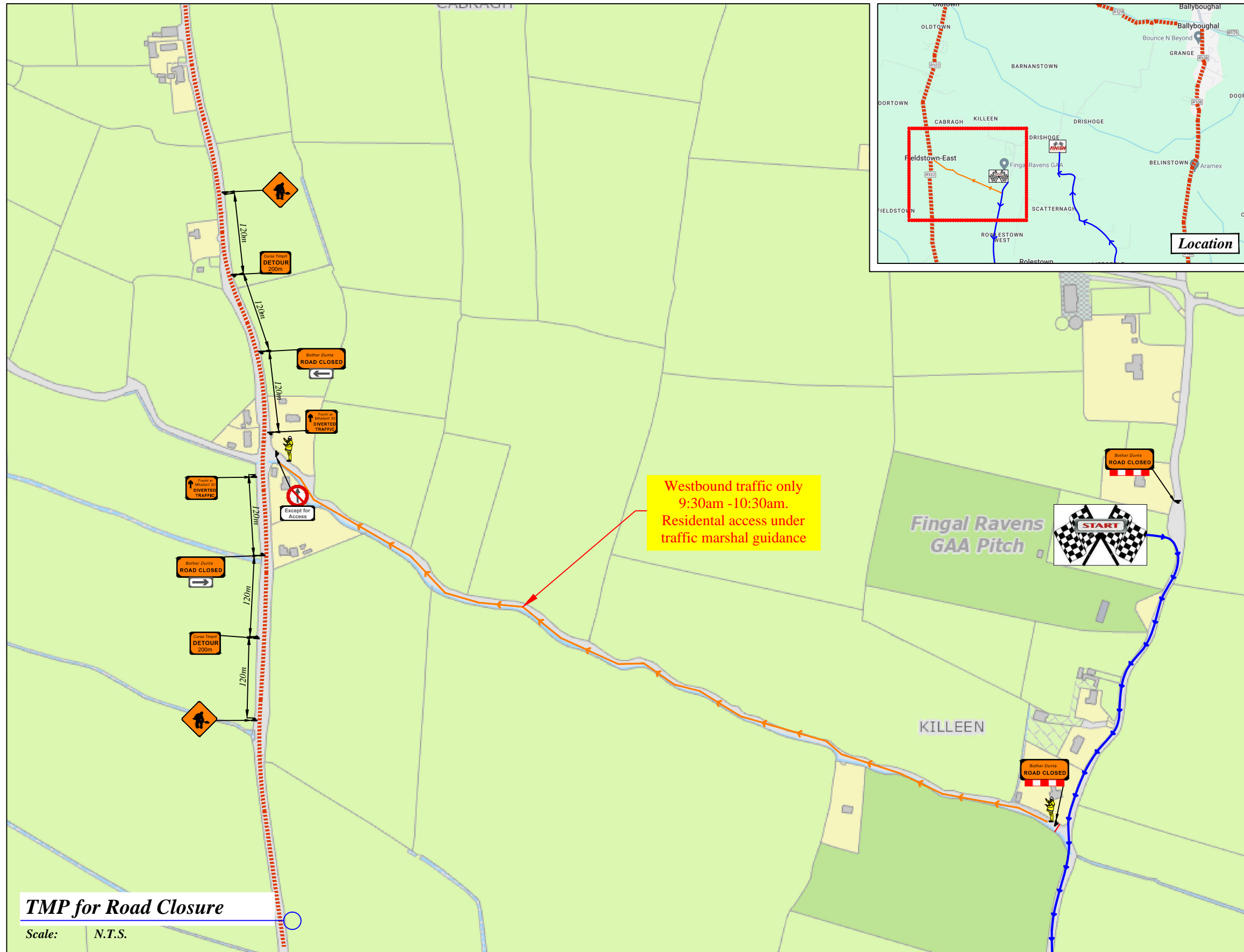
-  Sign Location
-  Run Route
-  Diversion route both directions
-  Traffic Flow
-  Traffic Management Operative
-  Approved Barrier

Works TTM type:	Static Type A				
	Design Type A: >12h				
Design Parameters:	LV-1 (I)	LV-1 (III)	LV-1 (IV)	LV-2 (I)	LV-2 (II)
1. Minimum Sign Size mm	450	600	600	600	750
2. Statutory Speed of the Road	30km/h	50	60	80	100
3. Distance between Advance Signs	10m	20m	20m	120m	200m
4. Number of Advance Signs	3 (<12h) 2 (>12h)	2	3 (<12h) 2 (>12h)	3 (<12h) 4 (>12h)	3 (<12h) 4 (>12h)
5. Minimum Visibility of Signs	25m	50m	60m	90m	120m
6. Longitudinal Safety Zone	0.5m	5m	15m	45m	60m
7. Lateral Safety Zone	0.5m	0.5m	0.5m	1.2m	1.2m
8. Leading Taper	1in1m	1in5m	1in10m	1in40	Lane-Width 10%-20%
9. Maximum at Tapers Cone Space	1m	3m	3m	3m	3m
10. Maximum Longitudinal Cone Space	3m	3m	6m	12m	12m
11. Lane Width (m)	2.5m	3 (2.5)	3 (2.5)	3 m	3 m
12. Two-way Roadway width (m)	5m	5m	5m	-	-

- Note:**
- All signs to comply with Chapter 8 of the "Traffic Signs Manual"-Guidance Document-2019.
 - All Traffic Management to be carried out in accordance with Chapter 8 of the "Traffic Signs Manual".
 - Detailed Risk Assessment to be carried out prior to the installation of Traffic Management System.
 - Exact sign positions to be agreed on site.
 - All affected Parties and An Garda Síochána to be notified prior to works commencing.
 - Signs to be positioned so as not to cause an obstruction to other road users.
 - All signs to be faced with retro-reflective material to class ref 2 of EN 12899.
 - "End of Roadworks" sign placed 20m to 50m from end of works area.
 - Road Closure points to be manned.
 - The Lead Escort Vehicle will ensure road is clear for lead runners and Trail Escort Vehicle will follow the final walking group.
 - Traffic control points will be removed once the Trail Escort Vehicle passes.
 - Pedestrians, Emergency Vehicles and local access will be facilitated by local marshals. Diversion signage and marshals will be in place for the duration of the closure. Passing of trail vehicle will enable road to reopen by Marshals.



Rev:	Description:	Date:	Job Details:	Drawing:	Dwg no:
			Proposed Traffic Management Plan for Rolestown 5K Community Fun Run 2024	TMP for Road Closure Ballyboghil Area	02
			Sheet:	Drawn By:	Rev:
			CAD File ref.:	DM	
				Date:	Scale:
					As Shown



LEGEND

- Sign Location
- Run Route
- Diversion route both directions
- Traffic Flow
- Traffic Management Operative
- Approved Barrier

Works TTM type:	Static Type A				
Design Parameters:	Design Type A: >12h				
	LV-1 (I)	LV-1 (III)	LV-1 (IV)	LV-2 (I)	LV-2 (II)
1. Minimum Sign Size mm	450	600	600	600	750
2. Statutory Speed of the Road	30km/h	50	60	80	100
3. Distance between Advance Signs	10m	20m	20m	120m	200m
4. Number of Advance Signs	3 (<12h) 2 (>12h)	2	3 (<12h) 2 (>12h)	3 (<12h) 4 (>12h)	4 (<12h)
5. Minimum Visibility of Signs	25m	50m	60m	90m	120m
6. Longitudinal Safety Zone	0.5m	5m	15m	45m	60m
7. Lateral Safety Zone	0.5m	0.5m	0.5m	1.2m	1.2m
8. Leading Taper	1in1m	1in5m	1in10m	1in40	Lane-Width 10x-Lane-Width
9. Maximum at Tapers Cone Space	1m	3m	3m	3m	3m
10. Maximum Longitudinal Cone Space	3m	3m	6m	12m	12m
11. Lane Width (m)	2.5m	3 (2.5)	3 (2.5)	3 m	3 m
12. Two-way Roadway width (m)	5m	5m	5m	-	-

- Note:**
- All signs to comply with Chapter 8 of the "Traffic Signs Manual"-Guidance Document-2019.
 - All Traffic Management to be carried out in accordance with Chapter 8 of the "Traffic Signs Manual".
 - Detailed Risk Assessment to be carried out prior to the installation of Traffic Management System.
 - Exact sign positions to be agreed on site.
 - All affected Parties and An Garda Síochána to be notified prior to works commencing.
 - Signs to be positioned so as not to cause an obstruction to other road users.
 - All signs to be faced with retro-reflective material to class ref 2 of EN 12899.
 - "End of Roadworks" sign placed 20m to 50m from end of works area.
 - Road Closure points to be manned.
 - The Lead Escort Vehicle will ensure road is clear for lead runners and Trail Escort Vehicle will follow the final walking group.
 - Traffic control points will be removed once the Trail Escort Vehicle passes.
 - Pedestrians, Emergency Vehicles and local access will be facilitated by local marshals. Diversion signage and marshals will be in place for the duration of the closure. Passing of trail vehicle will enable road to reopen by Marshals.

TMP for Road Closure

Scale: N.T.S.



Rev:	Description:	Date:	Job Details:	Drawing:	Dwg no:
			Proposed Traffic Management Plan for Rolestown 5K Community Fun Run 2024	TMP for Road Closure Wrens Nest Area	03
			Sheet:	Drawn By:	Rev:
				DM	02
			CAD File ref.:	Date:	Scale:
					As Shown



LEGEND

- Sign Location
- Run Route
- Diversion route both directions
- Traffic Flow
- Traffic Management Operative
- Approved Barrier

Works TTM type:	Static Type A				
	Design Type A: >12h				
Design Parameters:	LV-1 (I)	LV-1 (III)	LV-1 (IV)	LV-2 (I)	LV-2 (II)
	1. Minimum Sign Size mm	450	600	600	600
2. Statutory Speed of the Road	30km/h	50	60	80	100
3. Distance between Advance Signs	10m	20m	20m	120m	200m
4. Number of Advance Signs	3 (<12h) 2 (>12h)	2	3 (<12h) 2 (>12h)	3 (<12h) 4 (>12h)	3 (<12h) 4 (>12h)
5. Minimum Visibility of Signs	25m	50m	60m	90m	120m
6. Longitudinal Safety Zone	0.5m	5m	15m	45m	60m
7. Lateral Safety Zone	0.5m	0.5m	0.5m	1.2m	1.2m
8. Leading Taper	1in1m	1in5m	1in10m	1in40	Lane-10m 10m-10m
9. Maximum at Tapers Cone Space	1m	3m	3m	3m	3m
10. Maximum Longitudinal Cone Space	3m	3m	6m	12m	12m
11. Lane Width (m)	2.5m	3 (2.5)	3 (2.5)	3 m	3 m
12. Two-way Roadway width (m)	5m	5m	5m	-	-

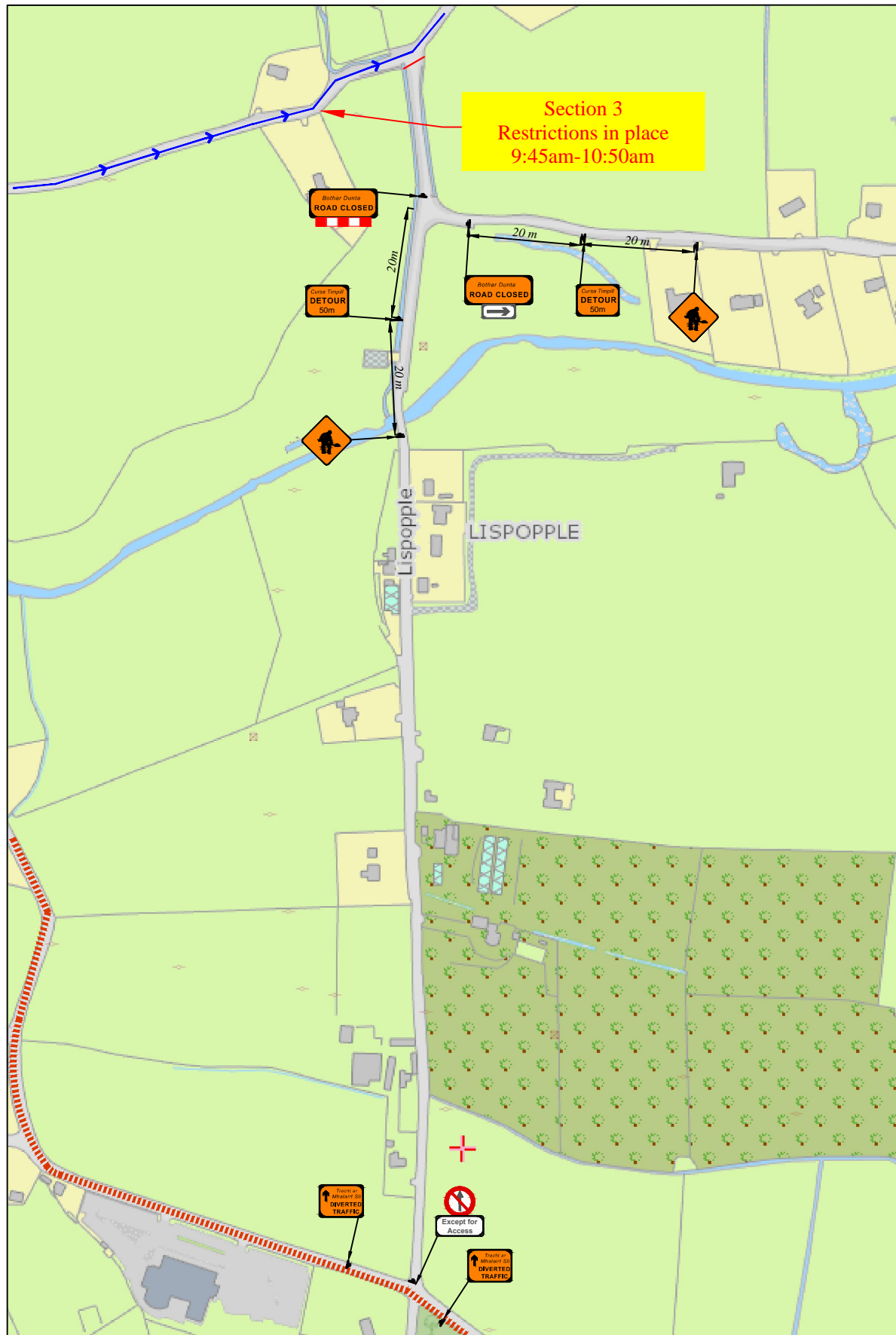
- Note:**
- All signs to comply with Chapter 8 of the "Traffic Signs Manual"-Guidance Document-2019.
 - All Traffic Management to be carried out in accordance with Chapter 8 of the "Traffic Signs Manual".
 - Detailed Risk Assessment to be carried out prior to the installation of Traffic Management System.
 - Exact sign positions to be agreed on site.
 - All affected Parties and An Garda Siochana to be notified prior to works commencing.
 - Signs to be positioned so as not to cause an obstruction to other road users.
 - All signs to be faced with retro-reflective material to class ref 2 of EN 12899.
 - "End of Roadworks" sign placed 20m to 50m from end of works area.
 - Road Closure points to be manned.
 - The Lead Escort Vehicle will ensure road is clear for lead runners and Trail Escort Vehicle will follow the final walking group.
 - Traffic control points will be removed once the Trail Escort Vehicle passes.
 - Pedestrians, Emergency Vehicles and local access will be facilitated by local marshals. Diversion signage and marshals will be in place for the duration of the closure. Passing of trail vehicle will enable road to reopen by Marshals.

TMP for Road Closure

Scale: N.T.S.



Rev:	Description:	Date:	Job Details:	Drawing:	Dwg no:
			Proposed Traffic Management Plan for Rolestown 5K Community Fun Run 2024	TMP for Road Closure Drishoge Area	04
			Sheet:	Drawn By: DM	Rev: 01
			CAD File ref.:	Date:	Scale: As Shown



LEGEND

- Sign Location
- Run Route
- Diversion route both directions
- Traffic Flow
- Traffic Management Operative
- Approved Barrier

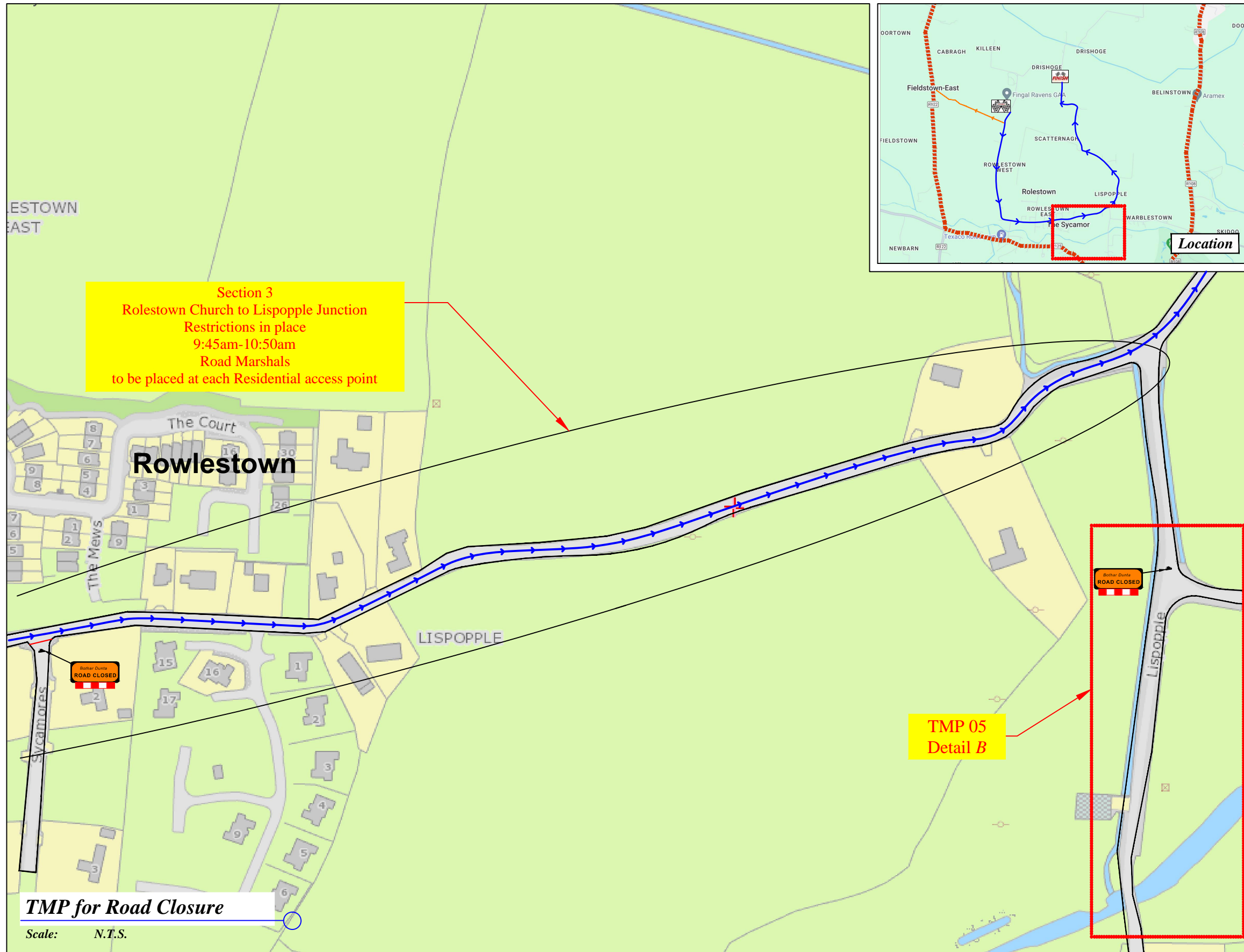
Works TTM type:	Static Type A				
Design Parameters:	Design Type A: >12h				
	LV-1 (I)	LV-1 (III)	LV-1 (IV)	LV-2 (I)	LV-2 (II)
1. Minimum Sign Size mm	450	600	600	600	750
2. Statutory Speed of the Road	30km/h	50	60	80	100
3. Distance between Advance Signs	10m	20m	20m	120m	200m
4. Number of Advance Signs	3 (<12h) 2 (>12h)	2	3 (<12h) 2 (>12h)	3 (<12h) 4 (>12h)	4 (<12h) 3 (>12h)
5. Minimum Visibility of Signs	25m	50m	60m	90m	120m
6. Longitudinal Safety Zone	0.5m	5m	15m	45m	60m
7. Lateral Safety Zone	0.5m	0.5m	0.5m	1.2m	1.2m
8. Leading Taper	1in1m	1in5m	1in10m	1in40	Lane-10m 10m-10m
9. Maximum at Tapers Cone Space	1m	3m	3m	3m	3m
10. Maximum Longitudinal Cone Space	3m	3m	6m	12m	12m
11. Lane Width (m)	2.5m	3 (2.5)	3 (2.5)	3 m	3 m
12. Two-way Roadway width (m)	5m	5m	5m	-	-

Note:

- All signs to comply with Chapter 8 of the "Traffic Signs Manual"-Guidance Document-2019.
- All Traffic Management to be carried out in accordance with Chapter 8 of the "Traffic Signs Manual".
- Detailed Risk Assessment to be carried out prior to the installation of Traffic Management System.
- Exact sign positions to be agreed on site.
- All affected Parties and An Garda Siochana to be notified prior to works commencing.
- Signs to be positioned so as not to cause an obstruction to other road users.
- All signs to be faced with retro-reflective material to class ref 2 of EN 12899.
- "End of Roadworks" sign placed 20m to 50m from end of works area.
- Road Closure points to be manned.
- The Lead Escort Vehicle will ensure road is clear for lead runners and Trail Escort Vehicle will follow the final walking group.
- Traffic control points will be removed once the Trail Escort Vehicle passes.
- Pedestrians, Emergency Vehicles and local access will be facilitated by local marshals. Diversion signage and marshals will be in place for the duration of the closure. Passing of trail vehicle will enable road to reopen by Marshals.



Rev:	Description:	Date:	Job Details:	Drawing:	Dwg no:
			Proposed Traffic Management Plan for Rolestown 5K Community Fun Run 2024	TMP for Road Closure Lispopple Area	05
			Sheet:	Drawn By:	Rev:
			CAD File ref.:	DM	02
				Date:	Scale:
					As Shown



LEGEND

- Sign Location
- Run Route
- Diversion route both directions
- Traffic Flow
- Traffic Management Operative
- Approved Barrier

Works TTM type:	Static Type A				
	Design Type A: >12h				
Design Parameters:	LV-1 (I)	LV-1 (III)	LV-1 (IV)	LV-2 (I)	LV-2 (II)
1. Minimum Sign Size mm	450	600	600	600	750
2. Statutory Speed of the Road	30km/h	50	60	80	100
3. Distance between Advance Signs	10m	20m	20m	120m	200m
4. Number of Advance Signs	3 (<12h) 2 (>12h)	2	3 (<12h) 2 (>12h)	3 (<12h) 4 (>12h)	4 (<12h) 4 (>12h)
5. Minimum Visibility of Signs	25m	50m	60m	90m	120m
6. Longitudinal Safety Zone	0.5m	5m	15m	45m	60m
7. Lateral Safety Zone	0.5m	0.5m	0.5m	1.2m	1.2m
8. Leading Taper	1in1m	1in5m	1in10m	1in40	Lane-Width 10x-10x20
9. Maximum at Tapers Cone Space	1m	3m	3m	3m	3m
10. Maximum Longitudinal Cone Space	3m	3m	6m	12m	12m
11. Lane Width (m)	2.5m	3 (2.5)	3 (2.5)	3 m	3 m
12. Two-way Roadway width (m)	5m	5m	5m	-	-

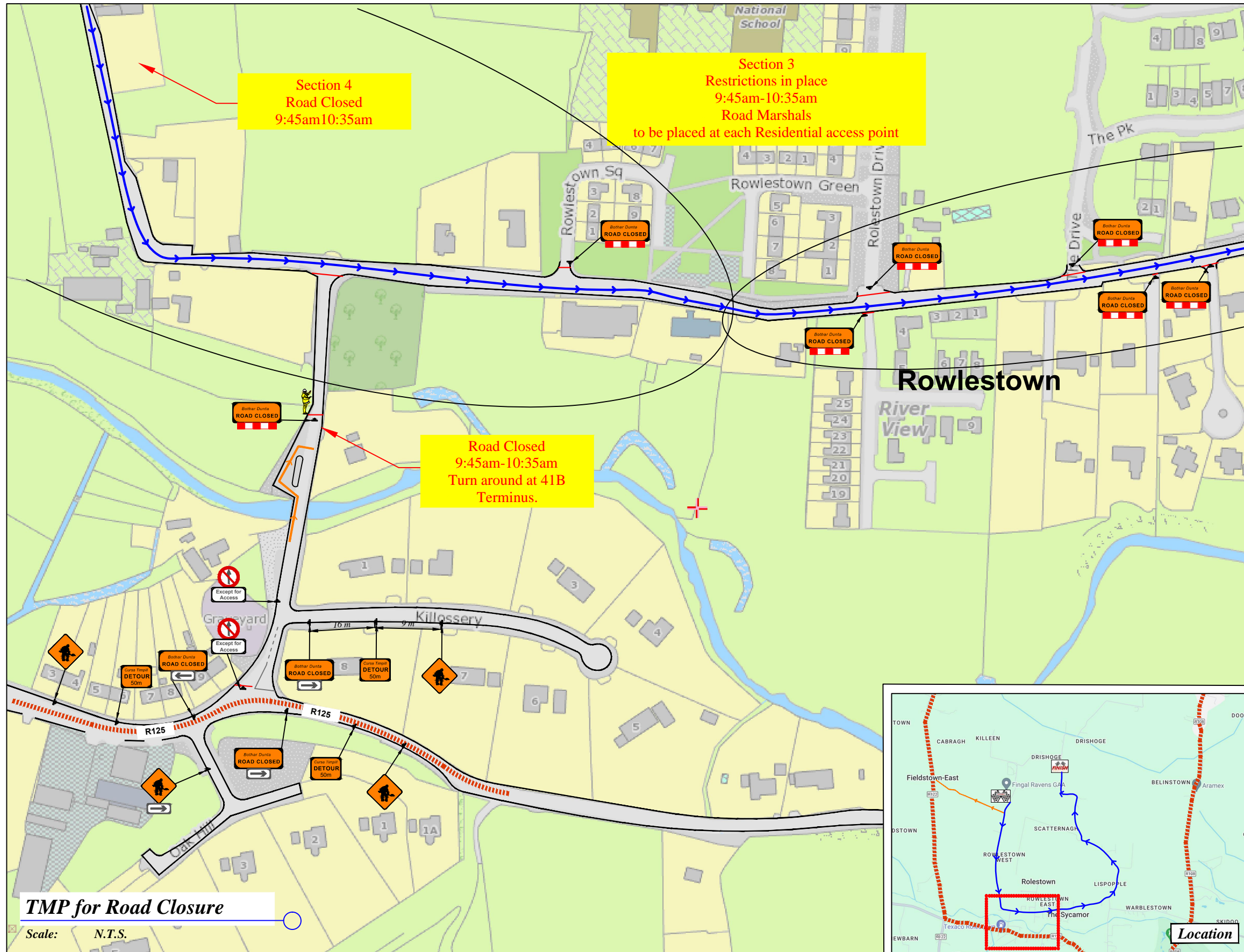
- Note:**
- All signs to comply with Chapter 8 of the "Traffic Signs Manual"-Guidance Document-2019.
 - All Traffic Management to be carried out in accordance with Chapter 8 of the "Traffic Signs Manual".
 - Detailed Risk Assessment to be carried out prior to the installation of Traffic Management System.
 - Exact sign positions to be agreed on site.
 - All affected Parties and An Garda Síochána to be notified prior to works commencing.
 - Signs to be positioned so as not to cause an obstruction to other road users.
 - All signs to be faced with retro-reflective material to class ref 2 of EN 12899.
 - "End of Roadworks" sign placed 20m to 50m from end of works area.
 - Road Closure points to be manned.
 - The Lead Escort Vehicle will ensure road is clear for lead runners and Trail Escort Vehicle will follow the final walking group.
 - Traffic control points will be removed once the Trail Escort Vehicle passes.
 - Pedestrians, Emergency Vehicles and local access will be facilitated by local marshals. Diversion signage and marshals will be in place for the duration of the closure. Passing of trail vehicle will enable road to reopen by Marshals.

TMP for Road Closure

Scale: N.T.S.



Rev:	Description:	Date:	Job Details:	Drawing:	Dwg no:
			Proposed Traffic Management Plan for Rolestown 5K Community Fun Run 2024	TMP for Road Closure Rowlestown East Area	06
			Sheet:	Drawn By: DM	Rev: 01
			CAD File ref.:	Date:	Scale: As Shown



LEGEND

- Sign Location
- Run Route
- Diversion route both directions
- Traffic Flow
- Traffic Management Operative
- Approved Barrier

Works TTM type:	Static Type A				
	Design Type A: >12h				
Design Parameters:	LV-1 (I)	LV-1 (III)	LV-1 (IV)	LV-2 (I)	LV-2 (II)
1. Minimum Sign Size mm	450	600	600	600	750
2. Statutory Speed of the Road	30km/h	50	60	80	100
3. Distance between Advance Signs	10m	20m	20m	120m	200m
4. Number of Advance Signs	3 (<12h) 2 (>12h)	2	3 (<12h) 2 (>12h)	3 (<12h) 4 (>12h)	3 (<12h) 4 (>12h)
5. Minimum Visibility of Signs	25m	50m	60m	90m	120m
6. Longitudinal Safety Zone	0.5m	5m	15m	45m	60m
7. Lateral Safety Zone	0.5m	0.5m	0.5m	1.2m	1.2m
8. Leading Taper	1in1m	1in5m	1in10m	1in40	Lane-Width 10x:1x:10m
9. Maximum at Tapers Cone Space	1m	3m	3m	3m	3m
10. Maximum Longitudinal Cone Space	3m	3m	6m	12m	12m
11. Lane Width (m)	2.5m	3 (2.5)	3 (2.5)	3 m	3 m
12. Two-way Roadway width (m)	5m	5m	5m	-	-

Note:

- All signs to comply with Chapter 8 of the "Traffic Signs Manual"-Guidance Document-2019.
- All Traffic Management to be carried out in accordance with Chapter 8 of the "Traffic Signs Manual".
- Detailed Risk Assessment to be carried out prior to the installation of Traffic Management System.
- Exact sign positions to be agreed on site.
- All affected Parties and An Garda Siochana to be notified prior to works commencing.
- Signs to be positioned so as not to cause an obstruction to other road users.
- All signs to be faced with retro-reflective material to class ref 2 of EN 12899.
- "End of Roadworks" sign placed 20m to 50m from end of works area.
- Road Closure points to be manned.
- The Lead Escort Vehicle will ensure road is clear for lead runners and Trail Escort Vehicle will follow the final walking group.
- Traffic control points will be removed once the Trail Escort Vehicle passes.
- Pedestrians, Emergency Vehicles and local access will be facilitated by local marshals. Diversion signage and marshals will be in place for the duration of the closure. Passing of trail vehicle will enable road to reopen by Marshals.

TMP for Road Closure

Scale: N.T.S.



Rev:	Description:	Date:

Job Details: Proposed Traffic Management Plan for Rowlestown 5K Community Fun Run 2024	
Sheet:	CAD File ref.:

Drawing: TMP for Road Closure Rowlestown West Area	
Drawn By:	Date:

Dwg no:	07
Rev:	02
Scale:	As Shown