

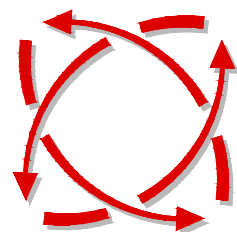
***PROPOSED TRAFFIC
MANAGEMENT SCHEME***

for

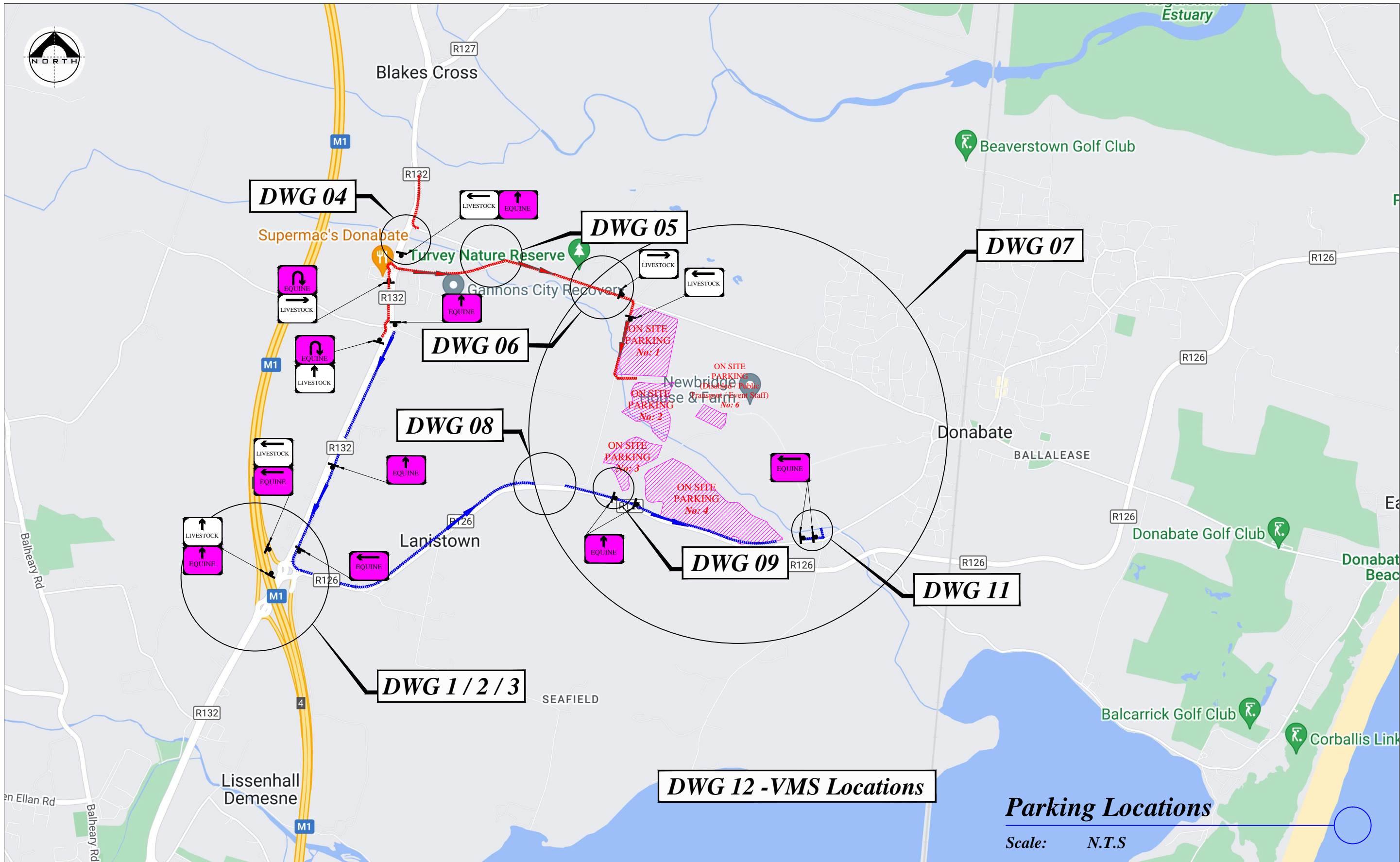
***Proposed Flavours of Fingal County Show
at Newbridge Demesne
2024-2025***

on behalf of

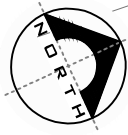
Fingal County Council



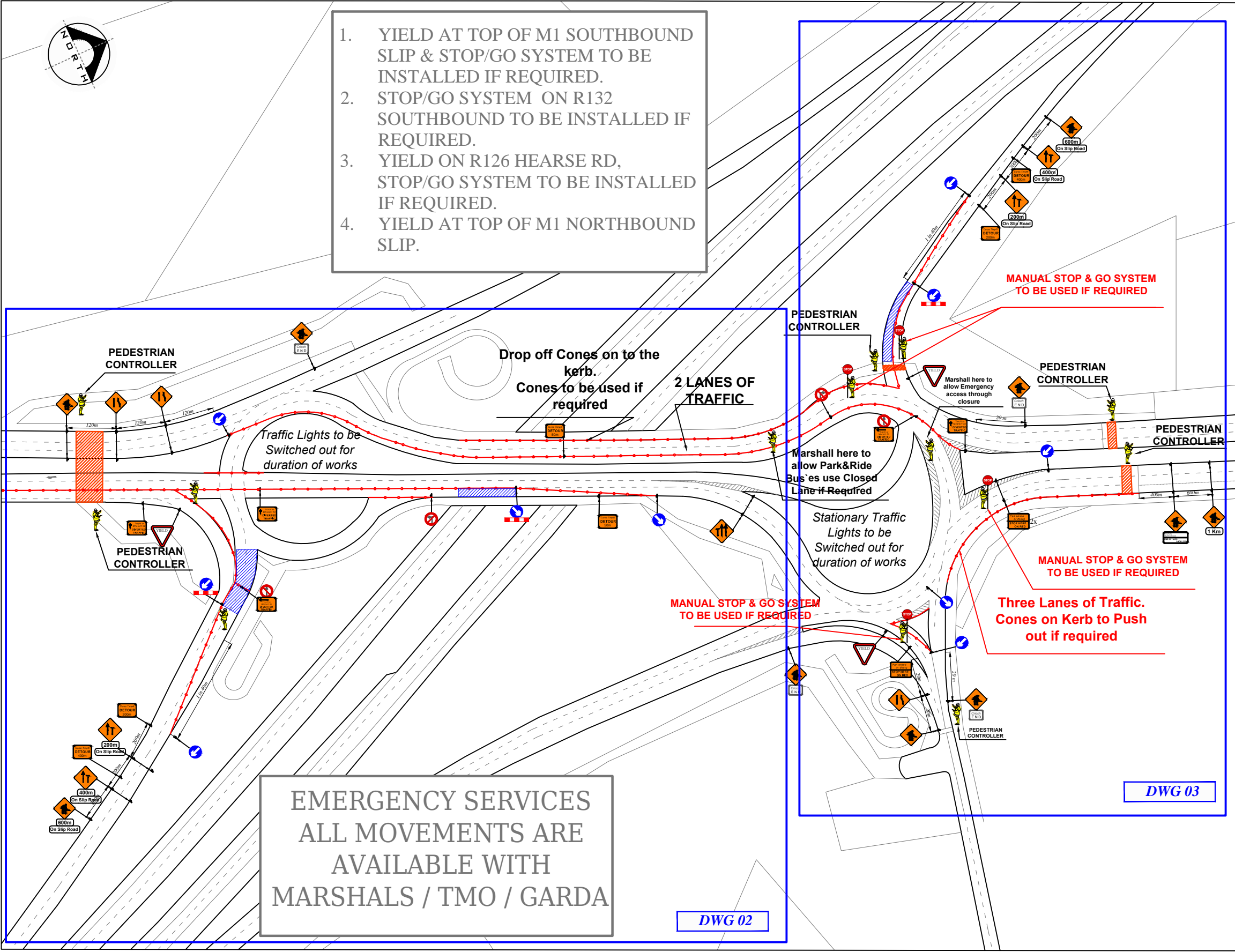
***FREEFLOW
TRAFFIC
MANAGEMENT***



Rev: <i>Description:</i> 	Date: 	Job Details: Proposed Traffic Management Plan for Flavours of Fingal County Show at Newbridge Demesne		Drawing: Parking Locations		Dwg no:
		Sheet:		CAD File ref.:		Rev:
		Drawn By: DM		Date: January 2024		Scale: As Shown



1. YIELD AT TOP OF M1 SOUTHBOUND SLIP & STOP/GO SYSTEM TO BE INSTALLED IF REQUIRED.
2. STOP/GO SYSTEM ON R132 SOUTHBOUND TO BE INSTALLED IF REQUIRED.
3. YIELD ON R126 HEARSE RD, STOP/GO SYSTEM TO BE INSTALLED IF REQUIRED.
4. YIELD AT TOP OF M1 NORTHBOUND SLIP.



LEGEND

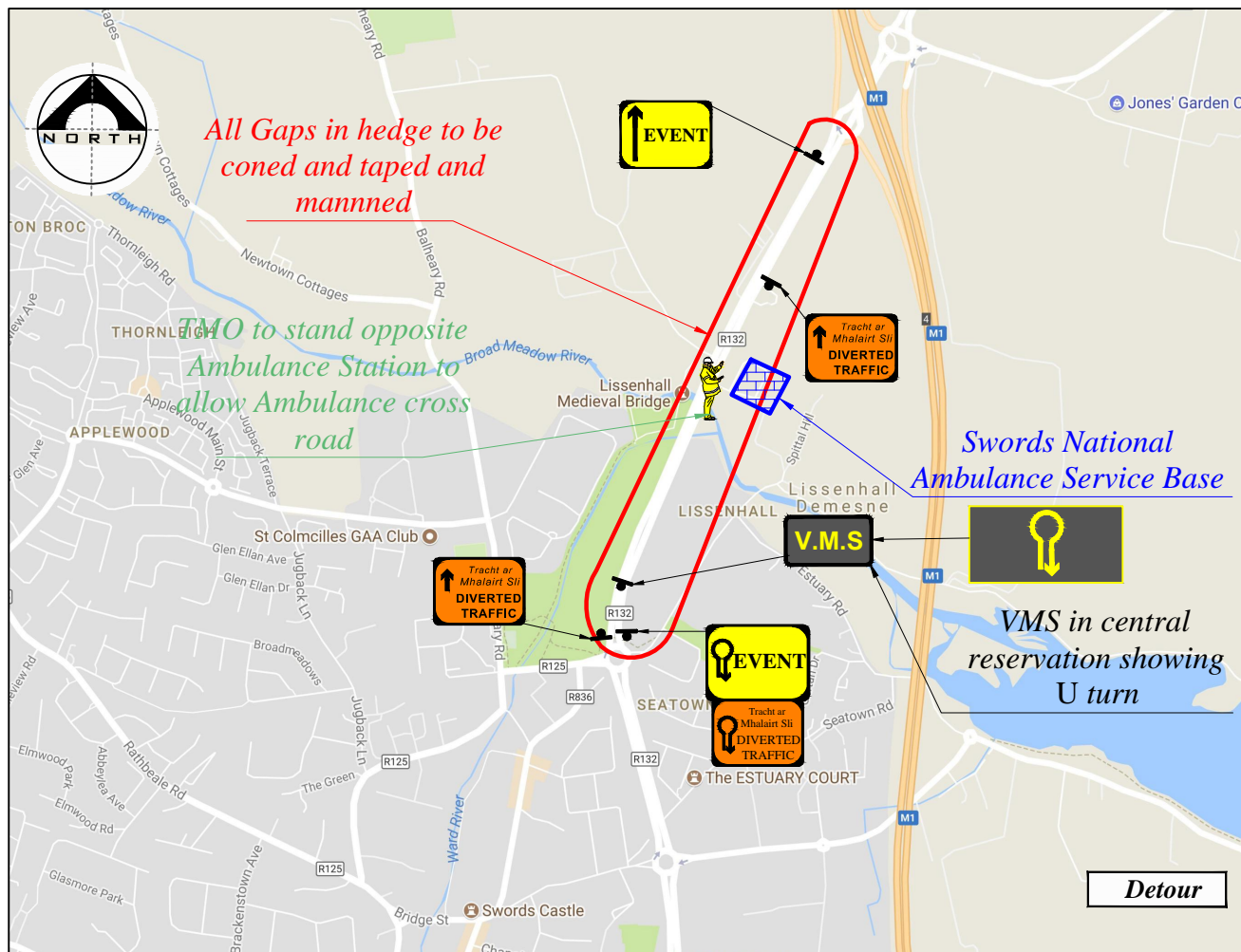
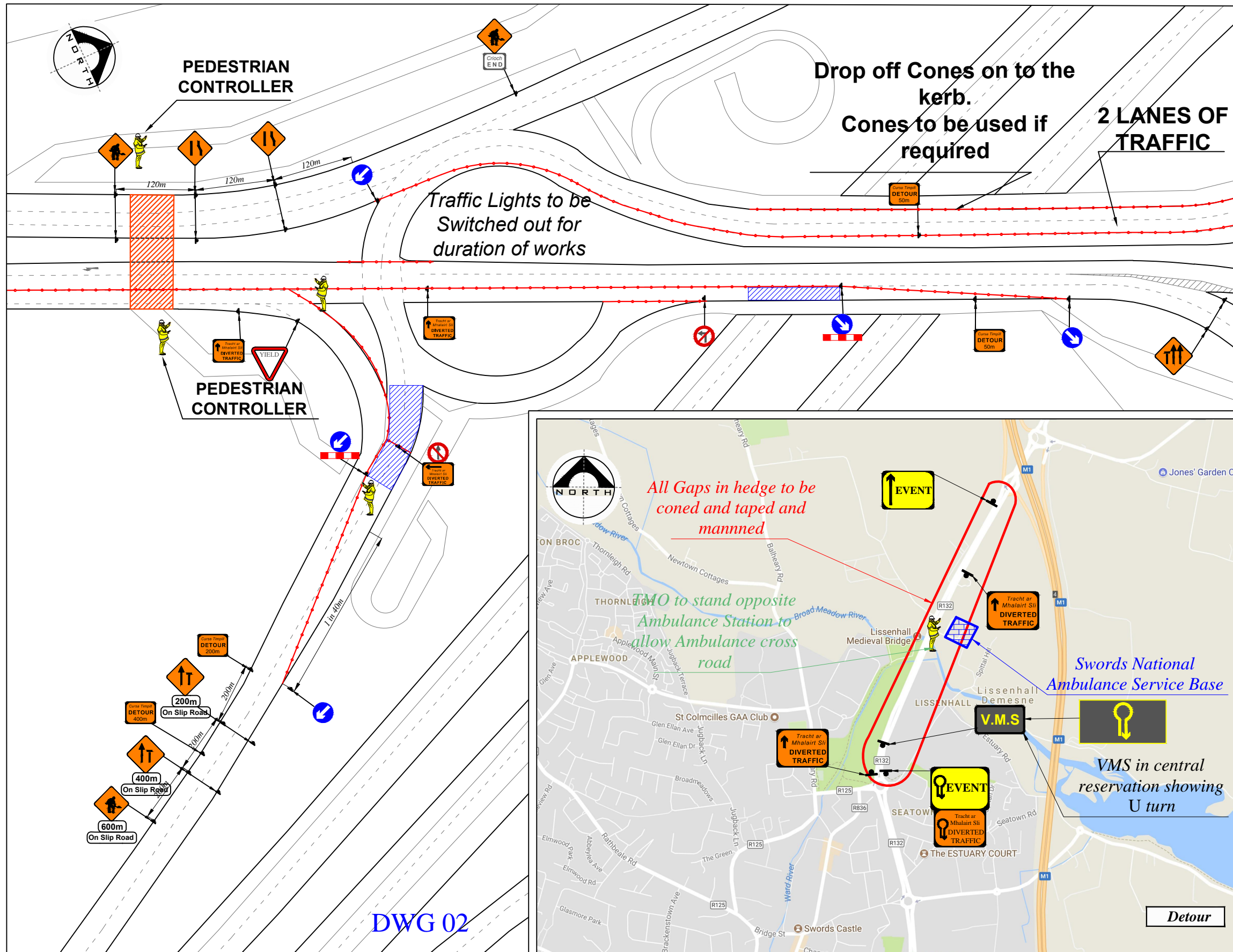
- Sign Location
- Traffic Cones
- Longitudinal Safety Zone
- Marshaled Pedestrian Crossing
- Event Parking

Works TTM type:	Static Type A				
	Design Type A: >12h				
Design Parameters:	LV-1 (I)	LV-1 (III)	LV-1 (IV)	LV-2 (I)	LV-2 (II)
1. Minimum Sign Size mm	450	600	600	600	750
2. Statutory Speed of the Road	30km/h	50	60	80	100
3. Distance between Advance Signs	10m	20m	20m	120m	200m
4. Number of Advance Signs	1 (<12h) 2 (>12h)	2	2 (<12h) 3 (>12h)	4 (<12h) 4 (>12h)	3 (<12h) 4 (>12h)
5. Minimum Visibility of Signs	25m	50m	60m	90m	120m
6. Longitudinal Safety Zone	0.5m	5m	15m	45m	60m
7. Lateral Safety Zone	0.5m	0.5m	0.5m	1.2m	1.2m
8. Leading Taper	1in1m	1in5m	1in10m	1in40	1in100
9. Maximum at Tapers Cone Space	1m	3m	3m	3m	3m
10. Maximum Longitudinal Cone Space	3m	3m	6m	12m	12m
11. Lane Width (m)	2.5m	3 (2.5)	3 (2.5)	3 m	3 m
12. Two-way Roadway width (m)	5m	5m	5m	-	-

- Note:**
1. All signs to comply with Chapter 8 of the "Traffic Signs Manual"-Guidance Document-2019.
 2. All Traffic Management to be carried out in accordance with Chapter 8 of the "Traffic Signs Manual".
 3. Detailed Risk Assessment to be carried out prior to the installation of Traffic Management System.
 4. Exact sign positions to be agreed on site.
 5. All affected Parties and An Garda Siochana to be notified prior to works commencing.
 6. Signs to be positioned so as not to cause an obstruction to other road users.
 7. All signs to be faced with retro-reflective material to class ref 2 of EN 12899.
 8. "End of Roadworks" sign placed 20m to 50m from end of works area.
 15. If centre line coning not achievable cones to be placed along road edge.
 16. EMERGENCY SERVICES ALL MOVEMENTS ARE AVAILABLE WITH MARSHALS / TMO / GARDA.
 17. Stationary Traffic Lights To Be switched out.



Rev:	Description:	Date:	Job Details:	Drawing:	Dwg no:
			Proposed Traffic Management Plan for Flavours of Fingal County Show at Newbridge Demesne	TMP for "Free Flow" System Junction A Layout	01
			Sheet:	Drawn By:	Rev:
			CAD File ref.:	DM	
				Date:	Scale:
				January 2024	As Shown



LEGEND

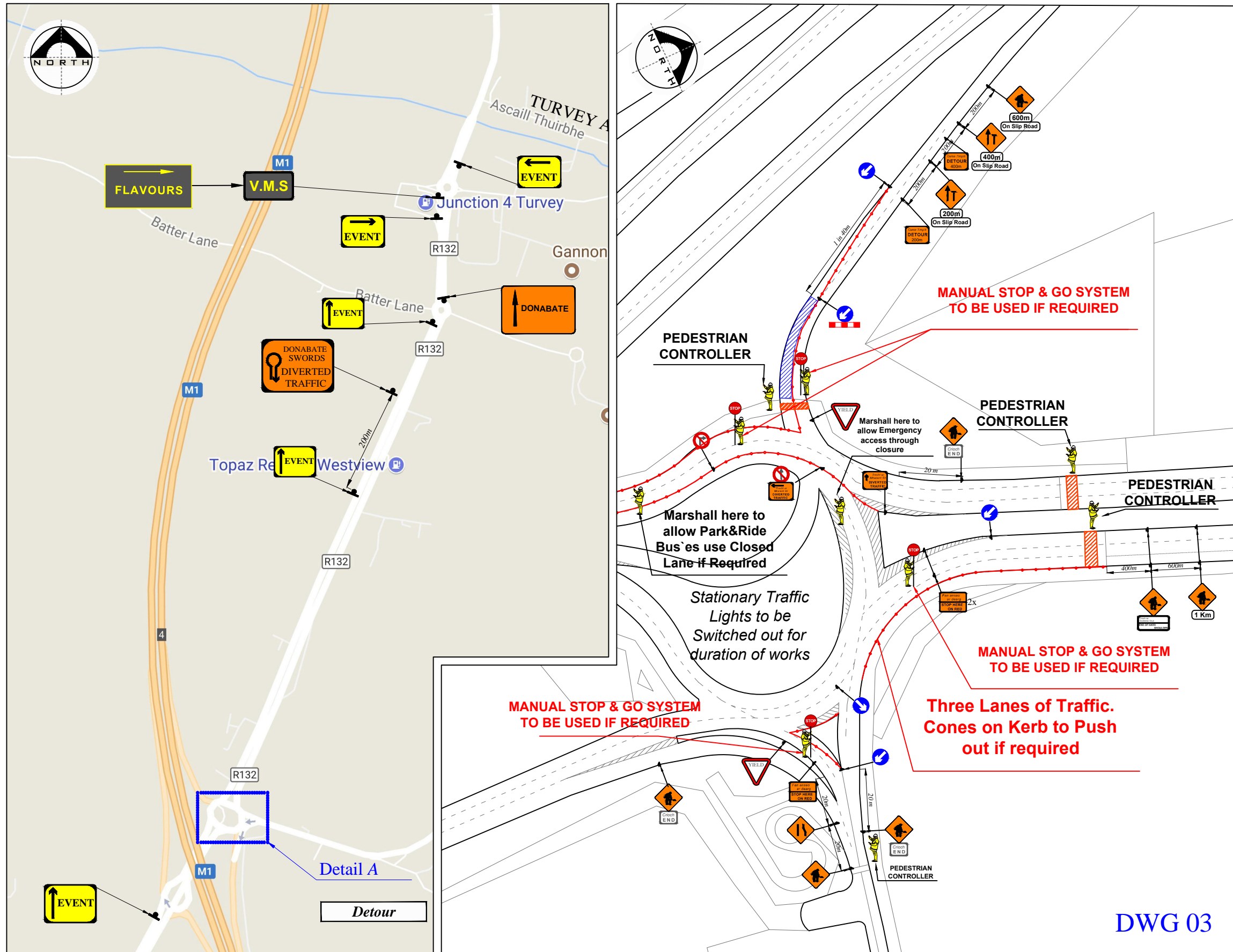
- Sign Location
- Traffic Cones
- Longitudinal Safety Zone
- Marshaled Pedestrian Crossing
- Event Parking

Works TTM type:	Static Type A				
	Design Type A: >12h				
Design Parameters:	LV-1 (I)	LV-1 (III)	LV-1 (IV)	LV-2 (I)	LV-2 (II)
1. Minimum Sign Size mm	450	600	600	600	750
2. Statutory Speed of the Road	30km/h	50	60	80	100
3. Distance between Advance Signs	10m	20m	20m	120m	200m
4. Number of Advance Signs	1 (<12h) 2 (>12h)	2	2 (<12h) 3 (>12h)	4 (<12h) 4 (>12h)	3 (<12h) 4 (>12h)
5. Minimum Visibility of Signs	25m	50m	60m	90m	120m
6. Longitudinal Safety Zone	0.5m	5m	15m	45m	60m
7. Lateral Safety Zone	0.5m	0.5m	0.5m	1.2m	1.2m
8. Leading Taper	1m/1m	1m/5m	1m/10m	1m/40m	1m/100m
9. Maximum at Tapers Cone Space	1m	3m	3m	3m	3m
10. Maximum Longitudinal Cone Space	3m	3m	6m	12m	12m
11. Lane Width (m)	2.5m	3 (2.5)	3 (2.5)	3 m	3 m
12. Two-way Roadway width (m)	5m	5m	5m	-	-

- Note:**
- All signs to comply with Chapter 8 of the "Traffic Signs Manual"-Guidance Document-2019.
 - All Traffic Management to be carried out in accordance with Chapter 8 of the "Traffic Signs Manual".
 - Detailed Risk Assessment to be carried out prior to the installation of Traffic Management System.
 - Exact sign positions to be agreed on site.
 - All affected Parties and An Garda Siochana to be notified prior to works commencing.
 - Signs to be positioned so as not to cause an obstruction to other road users.
 - All signs to be faced with retro-reflective material to class ref 2 of EN 12899.
 - "End of Roadworks" sign placed 20m to 50m from end of works area.
 - If centre line coning not achievable cones to be placed along road edge.
 - EMERGENCY SERVICES ALL MOVEMENTS ARE AVAILABLE WITH MARSHALS / TMO / GARDA.**
 - Stationary Traffic Lights To Be switched out.



Rev:	Description:	Date:	Job Details:	Drawing:	Dwg no:
			Proposed Traffic Management Plan for Flavours of Fingal County Show at Newbridge Demesne	TMP for "Free Flow" System Junction A Layout All Day	02
			Sheet:	Drawn By: DM	Rev:
			CAD File ref.:	Date: January 2024	Scale: As Shown



LEGEND

- Sign Location
- Traffic Cones
- Longitudinal Safety Zone
- Marshaled Pedestrian Crossing
- Event Parking

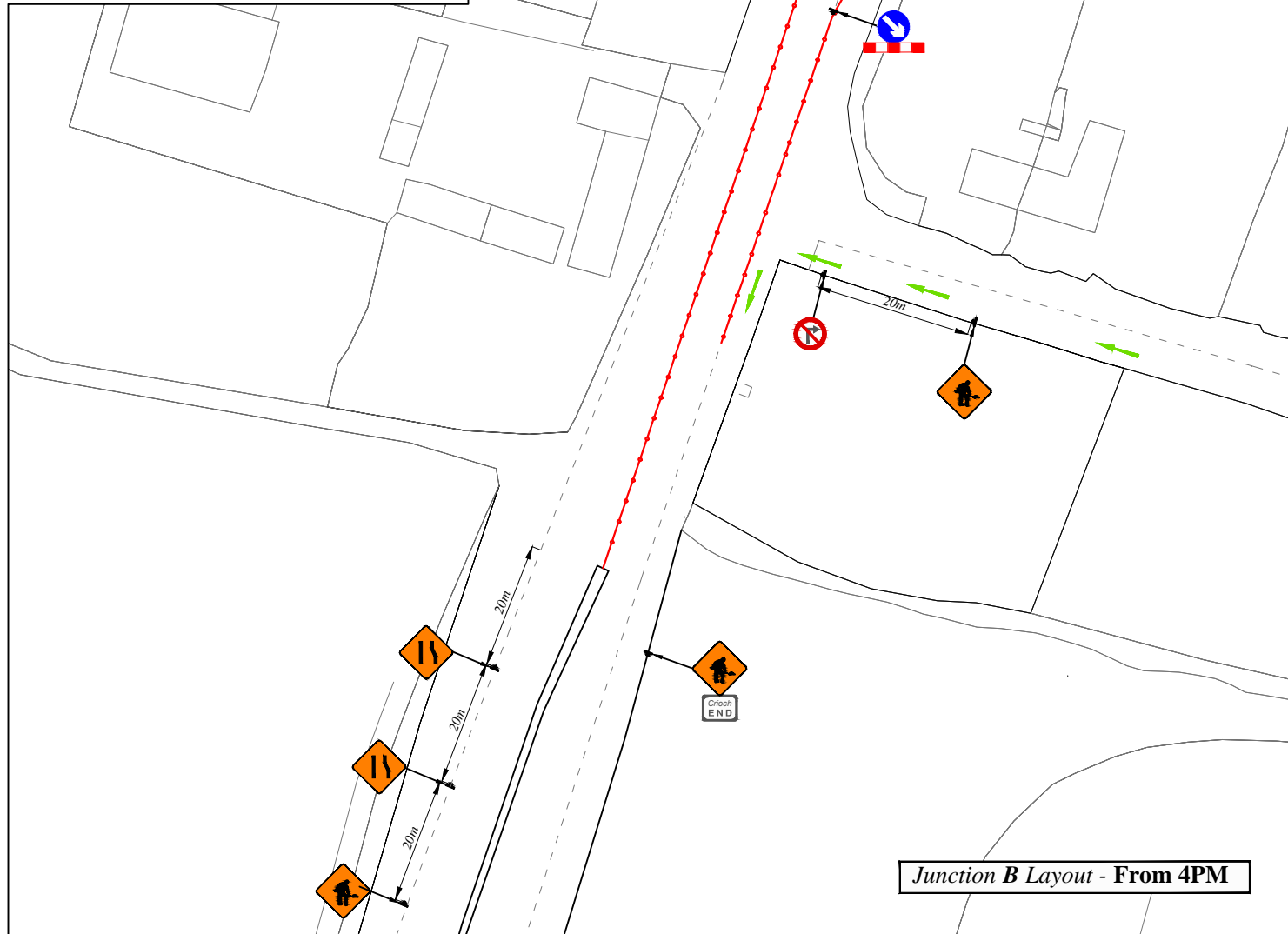
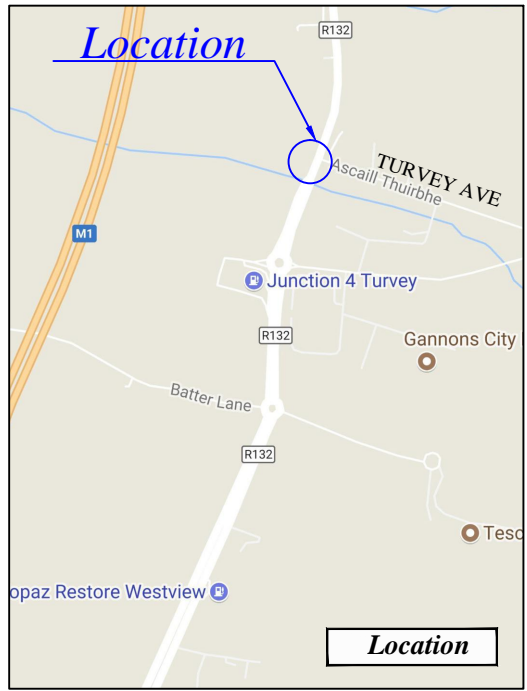
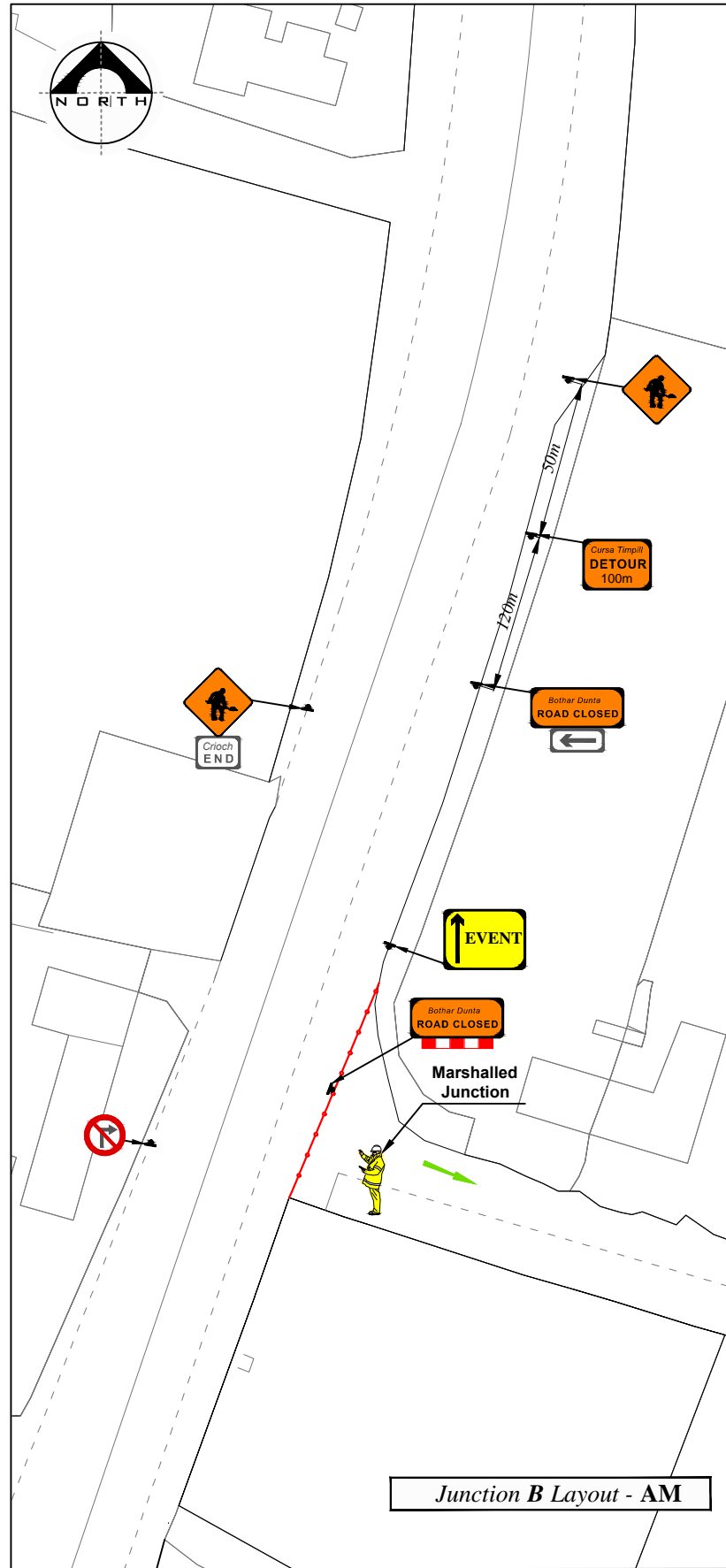
Works TTM type:	Static Type A				
	Design Type A: >12h				
Design Parameters:	LV-1 (I)	LV-1 (III)	LV-1 (IV)	LV-2 (I)	LV-2 (II)
1. Minimum Sign Size mm	450	600	600	600	750
2. Statutory Speed of the Road	30km/h	50	60	80	100
3. Distance between Advance Signs	10m	20m	20m	120m	200m
4. Number of Advance Signs	1 (<12h) 2 (>12h)	2	2 (<12h) 3 (>12h)	4 (<12h) 4 (>12h)	3 (<12h) 4 (>12h)
5. Minimum Visibility of Signs	25m	50m	60m	90m	120m
6. Longitudinal Safety Zone	0.5m	5m	15m	45m	60m
7. Lateral Safety Zone	0.5m	0.5m	0.5m	1.2m	1.2m
8. Leading Taper	1in1m	1in5m	1in10m	1in40	1in100
9. Maximum at Tapers Cone Space	1m	3m	3m	3m	3m
10. Maximum Longitudinal Cone Space	3m	3m	6m	12m	12m
11. Lane Width (m)	2.5m	3 (2.5)	3 (2.5)	3 m	3 m
12. Two-way Roadway width (m)	5m	5m	5m	-	-

- Note:**
1. All signs to comply with Chapter 8 of the "Traffic Signs Manual"-Guidance Document-2019.
 2. All Traffic Management to be carried out in accordance with Chapter 8 of the "Traffic Signs Manual".
 3. Detailed Risk Assessment to be carried out prior to the installation of Traffic Management System.
 4. Exact sign positions to be agreed on site.
 5. All affected Parties and An Garda Siochana to be notified prior to works commencing.
 6. Signs to be positioned so as not to cause an obstruction to other road users.
 7. All signs to be faced with retro-reflective material to class ref 2 of EN 12899.
 8. "End of Roadworks" sign placed 20m to 50m from end of works area.
 15. If centre line coning not achievable cones to be placed along road edge.
 16. EMERGENCY SERVICES ALL MOVEMENTS ARE AVAILABLE WITH MARSHALS / TMO / GARDA.
 17. Stationary Traffic Lights To Be switched out.

DWG 03



Rev:	Description:	Date:	Job Details:	Drawing:	Dwg no:
			Proposed Traffic Management Plan for Flavours of Fingal County Show at Newbridge Demesne	TMP for "Free Flow" System Junction A Layout All Day	03
			Sheet:	Drawn By:	Rev:
			CAD File ref.:	DM	
				Date:	Scale:
				January 2024	As Shown



LEGEND

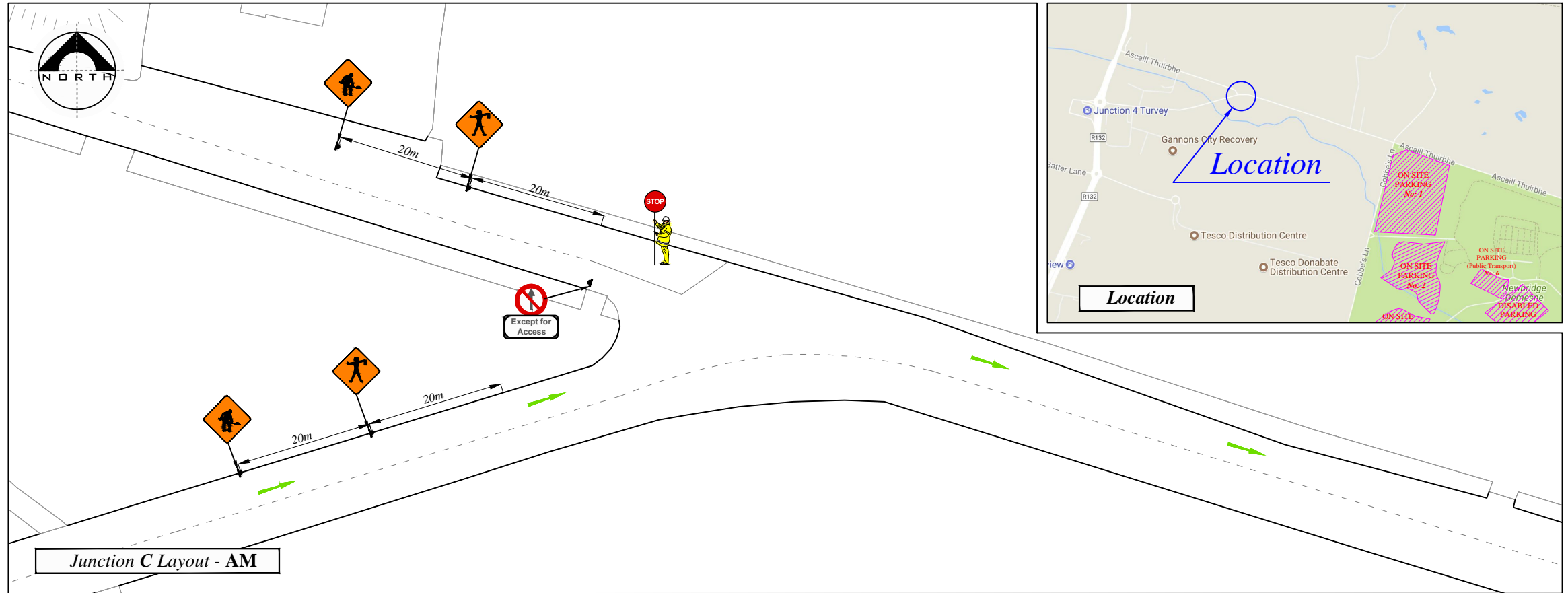
- Sign Location
- Traffic Cones
- Longitudinal Safety Zone
- Marshaled Pedestrian Crossing
- Event Parking
- Free Traffic Movements
- Marshaled Traffic Movements

Works TTM type:	Static Type A				
	Design Type A: >12h				
Design Parameters:	LV-1 (I)	LV-1 (III)	LV-1 (IV)	LV-2 (I)	LV-2 (II)
1. Minimum Sign Size mm	450	600	600	600	750
2. Statutory Speed of the Road	30km/h	50	60	80	100
3. Distance between Advance Signs	10m	20m	20m	20m	200m
4. Number of Advance Signs	1 (<12h) 2 (>12h)	2	3 (<12h) 2 (>12h)	4 (<12h) 4 (>12h)	3 (<12h) 4 (>12h)
5. Minimum Visibility of Signs	25m	50m	60m	90m	120m
6. Longitudinal Safety Zone	0.5m	5m	15m	45m	60m
7. Lateral Safety Zone	0.5m	0.5m	0.5m	1.2m	1.2m
8. Leading Taper	1in1m	1in5m	1in10m	1in40	1in100
9. Maximum at Tapers Cone Space	1m	3m	3m	3m	3m
10. Maximum Longitudinal Cone Space	3m	3m	6m	12m	12m
11. Lane Width (m)	2.5m	3 (2.5)	3 (2.5)	3 m	3 m
12. Two-way Roadway width (m)	5m	5m	5m	-	-

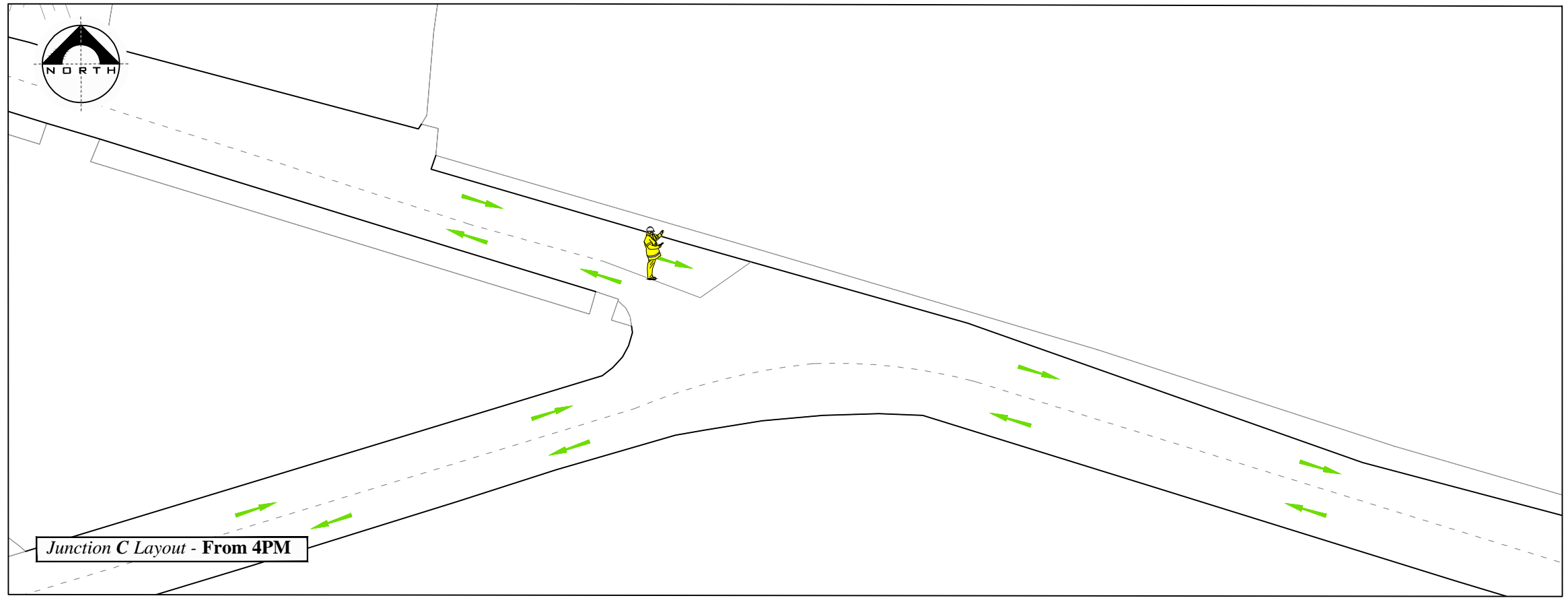
- Note:**
1. All signs to comply with Chapter 8 of the "Traffic Signs Manual"-Guidance Document-2019.
 2. All Traffic Management to be carried out in accordance with Chapter 8 of the "Traffic Signs Manual".
 3. Detailed Risk Assessment to be carried out prior to the installation of Traffic Management System.
 4. Exact sign positions to be agreed on site.
 5. All affected Parties and An Garda Síochána to be notified prior to works commencing.
 6. Signs to be positioned so as not to cause an obstruction to other road users.
 7. All signs to be faced with retro-reflective material to class ref 2 of EN 12899.
 8. "End of Roadworks" sign placed 20m to 50m from end of works area.
 15. If centre line coning not achievable cones to be placed along road edge.
 16. EMERGENCY SERVICES ALL MOVEMENTS ARE AVAILABLE WITH MARSHALS / TMO / GARDA.



Rev:	Description:	Date:	Job Details:	Drawing:	Dwg no:
			Proposed Traffic Management Plan for Flavours of Fingal County Show at Newbridge Demesne	TMP for "Free Flowing Movements" System at R132/Old Turvey Avenue (Junction B)	04
			Sheet:	Drawn By:	Rev:
			CAD File ref.:	DM	
				Date:	Scale:
				January 2024	As Shown



Junction C Layout - AM



Junction C Layout - From 4PM

LEGEND

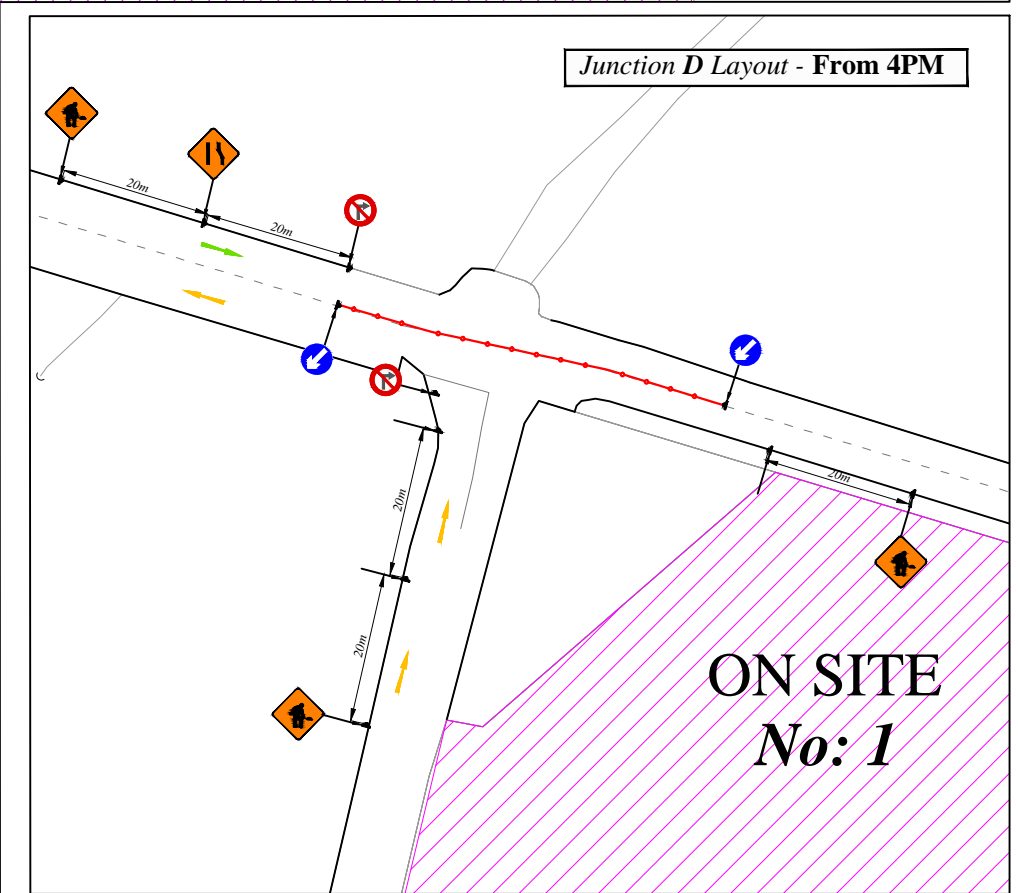
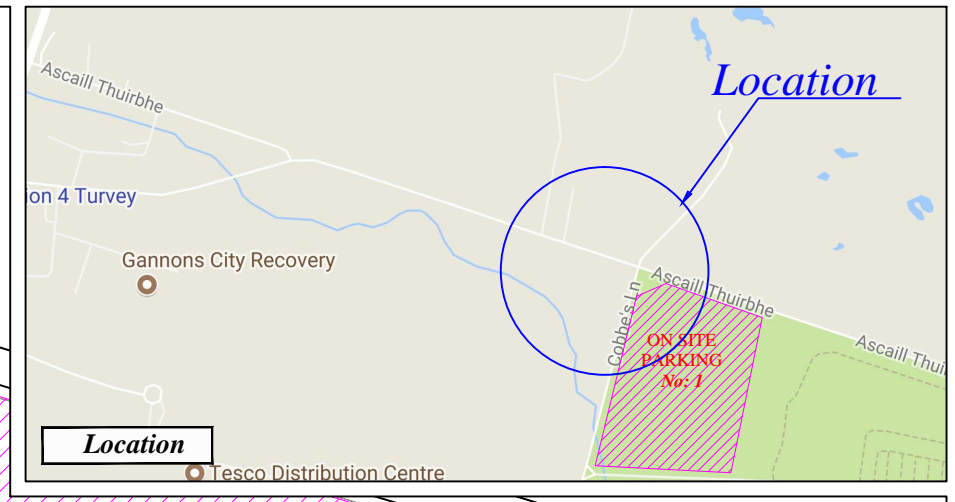
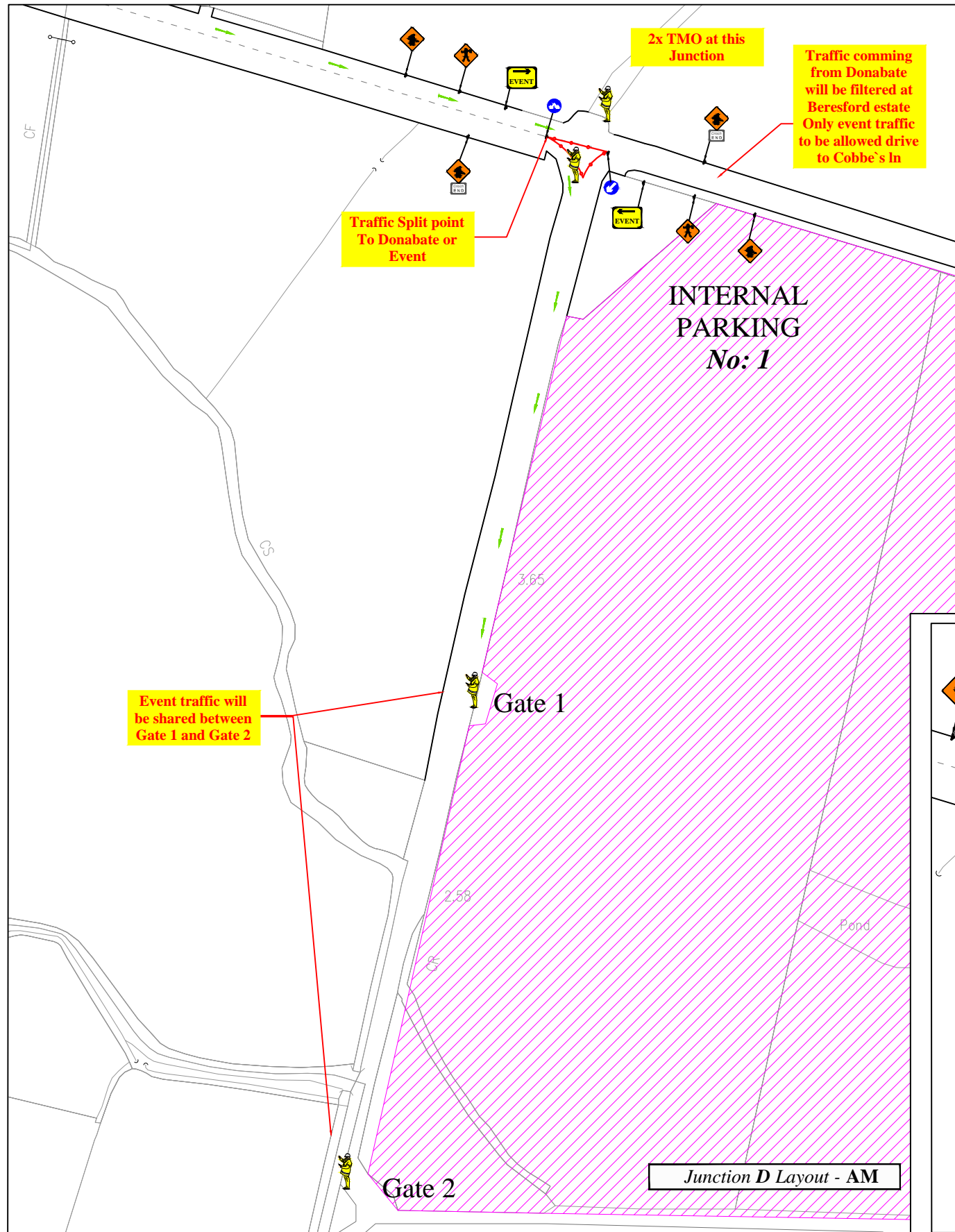
- Sign Location
- Traffic Cones
- Longitudinal Safety Zone
- Marshaled Pedestrian Crossing
- Event Parking
- Free Traffic Movements
- Marshaled Traffic Movements

Works TTM type:	Static Type A				
Design Parameters:	Design Type A: >12h				
	LV-1 (I)	LV-1 (III)	LV-1 (IV)	LV-2 (I)	LV-2 (II)
1. Minimum Sign Size mm	450	600	600	600	750
2. Statutory Speed of the Road	30km/h	50	60	80	100
3. Distance between Advance Signs	10m	20m	20m	120m	200m
4. Number of Advance Signs	1 (<12h) 2 (>12h)	2	2 (<12h) 3 (>12h)	4 (<12h) 4 (>12h)	3 (<12h) 4 (>12h)
5. Minimum Visibility of Signs	25m	50m	60m	90m	120m
6. Longitudinal Safety Zone	0.5m	5m	15m	45m	60m
7. Lateral Safety Zone	0.5m	0.5m	0.5m	1.2m	1.2m
8. Leading Taper	1in1m	1in5m	1in10m	1in40	1in100 1in120
9. Maximum at Tapers Cone Space	1m	3m	3m	3m	3m
10. Maximum Longitudinal Cone Space	3m	3m	6m	12m	12m
11. Lane Width (m)	2.5m	3 (2.5)	3 (2.5)	3 m	3 m
12. Two-way Roadway width (m)	5m	5m	5m	-	-

- Note:**
- All signs to comply with Chapter 8 of the "Traffic Signs Manual"-Guidance Document-2019.
 - All Traffic Management to be carried out in accordance with Chapter 8 of the "Traffic Signs Manual".
 - Detailed Risk Assessment to be carried out prior to the installation of Traffic Management System.
 - Exact sign positions to be agreed on site.
 - All affected Parties and An Garda Síochána to be notified prior to works commencing.
 - Signs to be positioned so as not to cause an obstruction to other road users.
 - All signs to be faced with retro-reflective material to class ref 2 of EN 12899.
 - "End of Roadworks" sign placed 20m to 50m from end of works area.
 - If centre line coning not achievable cones to be placed along road edge.
 - EMERGENCY SERVICES ALL MOVEMENTS ARE AVAILABLE WITH MARSHALS / TMO / GARDA.



Rev:	Description:	Date:	Job Details:	Drawing:	Dwg no:
			Proposed Traffic Management Plan for Flavours of Fingal County Show at Old Turvey Ave and New Turvey Ave (Junction C Layout)	TMP for "Free Flowing Movements" System at Old Turvey Ave and New Turvey Ave (Junction C Layout)	05
			Sheet:	Drawn By:	Rev:
			CAD File ref.:	Date:	Scale:
				January 2024	As Shown



LEGEND

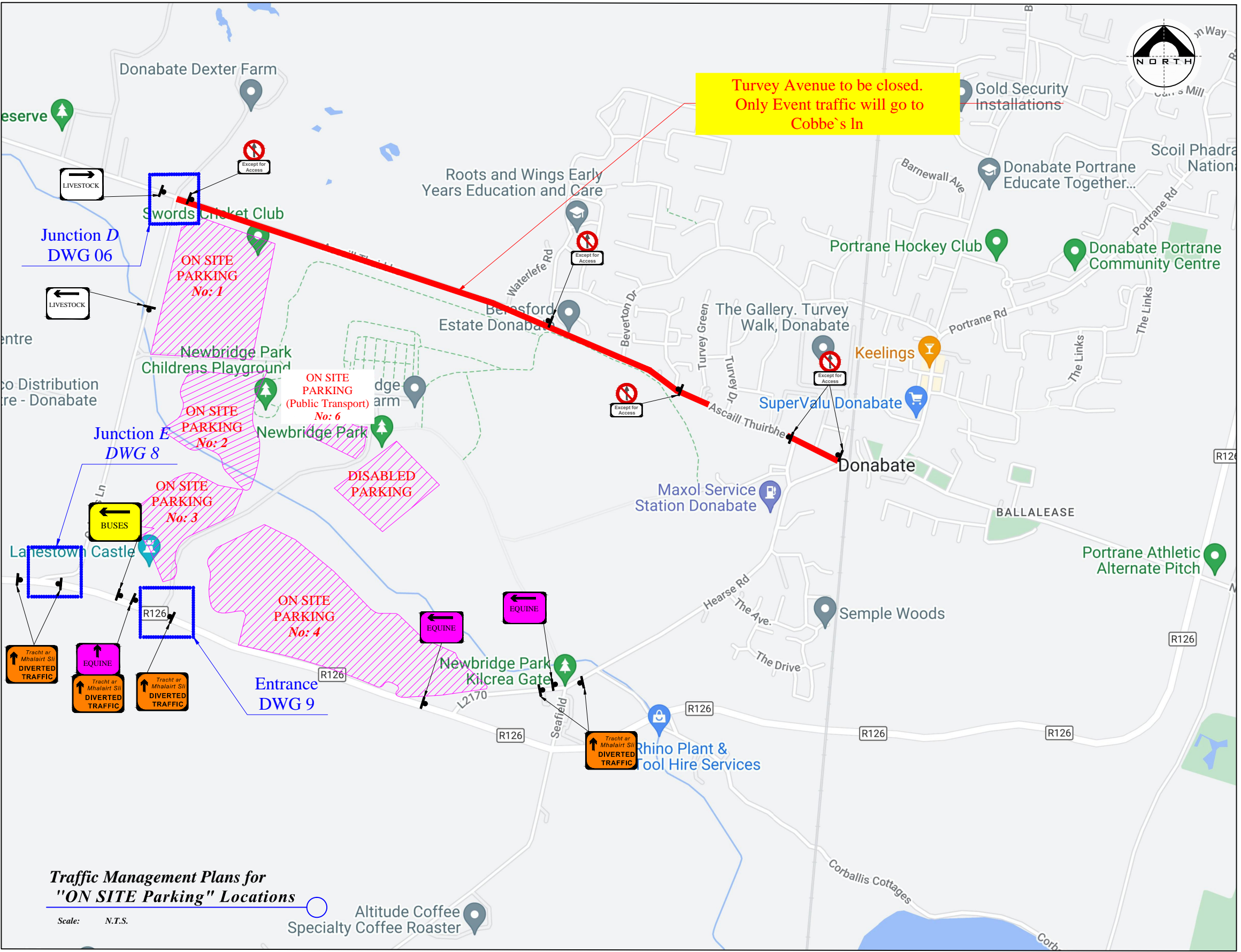
- Sign Location
- Traffic Cones
- Longitudinal Safety Zone
- Marshaled Pedestrian Crossing
- Event Parking
- Free Traffic Movements
- Marshaled Traffic Movements

Works TTM type:	Static Type A				
	Design Type A: >12h				
Design Parameters:	LV-1 (I)	LV-1 (III)	LV-1 (IV)	LV-2 (I)	LV-2 (II)
1. Minimum Sign Size mm	450	600	600	600	750
2. Statutory Speed of the Road	30km/h	50	60	80	100
3. Distance between Advance Signs	10m	20m	20m	120m	200m
4. Number of Advance Signs	1 (<12h) 2 (>12h)	2	3 (<12h) 2 (>12h)	3 (<12h) 4 (>12h)	3 (<12h) 4 (>12h)
5. Minimum Visibility of Signs	25m	50m	60m	90m	120m
6. Longitudinal Safety Zone	0.5m	5m	15m	45m	60m
7. Lateral Safety Zone	0.5m	0.5m	0.5m	1.2m	1.2m
8. Leading Taper	1in1m	1in5m	1in10m	1in40	1in100 1in120
9. Maximum at Tapers Cone Space	1m	3m	3m	3m	3m
10. Maximum Longitudinal Cone Space	3m	3m	6m	12m	12m
11. Lane Width (m)	2.5m	3 (2.5)	3 (2.5)	3 m	3 m
12. Two-way Roadway width (m)	5m	5m	5m	-	-

- Note:**
1. All signs to comply with Chapter 8 of the "Traffic Signs Manual"-Guidance Document-2019.
 2. All Traffic Management to be carried out in accordance with Chapter 8 of the "Traffic Signs Manual".
 3. Detailed Risk Assessment to be carried out prior to the installation of Traffic Management System.
 4. Exact sign positions to be agreed on site.
 5. All affected Parties and An Garda Siochana to be notified prior to works commencing.
 6. Signs to be positioned so as not to cause an obstruction to other road users.
 7. All signs to be faced with retro-reflective material to class ref 2 of EN 12899.
 8. "End of Roadworks" sign placed 20m to 50m from end of works area.
 15. If centre line coning not achievable cones to be placed along road edge.
 16. EMERGENCY SERVICES ALL MOVEMENTS ARE AVAILABLE WITH MARSHALS / TMO / GARDA.



Rev:	Description:	Date:	Job Details:	Drawing:	Dwg no:
			Proposed Traffic Management Plan for Flavours of Fingal County Show at Newbridge Demesne	TMP for "Free Flowing Movements" & "Stop & Go" System at Allotments / Cobbe's Lane. (Junction D Layout)	06
			Sheet:	Drawn By:	Rev:
			CAD File ref.:	DM	
				Date:	Scale:
				January 2024	As Shown



LEGEND

- Sign Location
- Traffic Cones
- Longitudinal Safety Zone
- Marshaled Pedestrian Crossing
- Event Parking
- Free Traffic Movements
- Marshaled Traffic Movements

Works TTM type:	Static Type A				
	Design Type A: >12h				
Design Parameters:	LV-1 (I)	LV-1 (III)	LV-1 (IV)	LV-2 (I)	LV-2 (II)
1. Minimum Sign Size mm	450	600	600	600	750
2. Statutory Speed of the Road	30km/h	50	60	80	100
3. Distance between Advance Signs	10m	20m	20m	20m	200m
4. Number of Advance Signs	1 (<12h)	2	2 (>12h)	3 (<12h)	4 (>12h)
5. Minimum Visibility of Signs	25m	50m	60m	90m	120m
6. Longitudinal Safety Zone	0.5m	5m	15m	45m	60m
7. Lateral Safety Zone	0.5m	0.5m	0.5m	1.2m	1.2m
8. Leading Taper	1in1m	1in5m	1in10m	1in40	1in100
9. Maximum at Tapers Cone Space	1m	3m	3m	3m	3m
10. Maximum Longitudinal Cone Space	3m	3m	6m	12m	12m
11. Lane Width (m)	2.5m	3	3 (2.5)	3 m	3 m
12. Two-way Roadway width (m)	5m	5m	5m	-	-

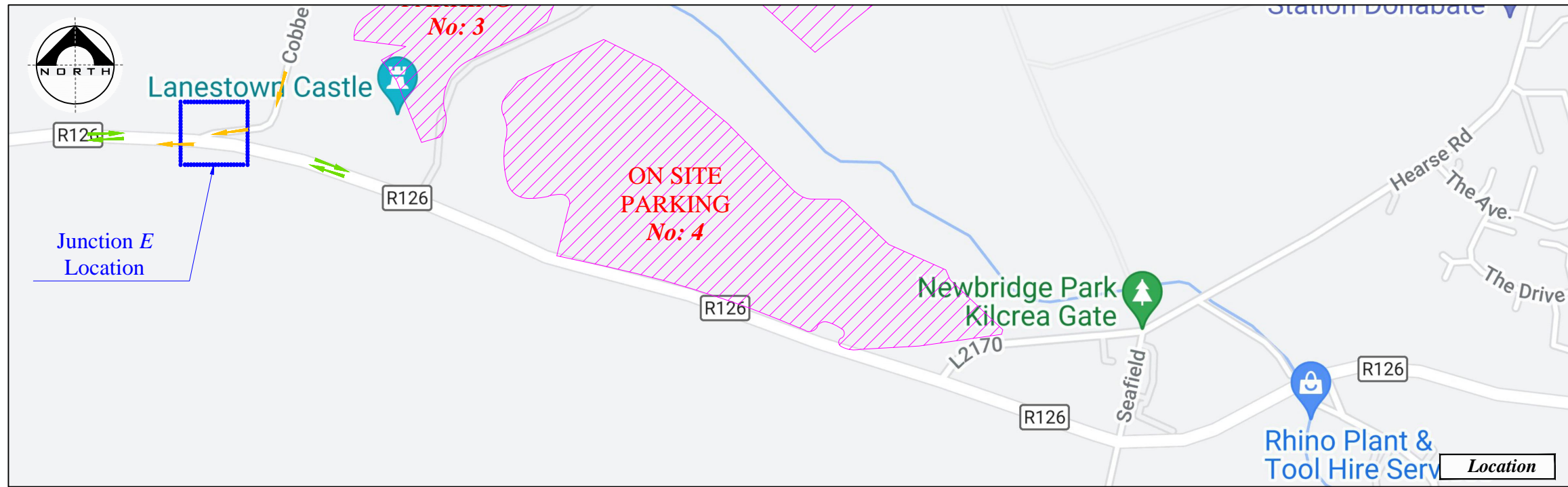
- Note:**
1. All signs to comply with Chapter 8 of the "Traffic Signs Manual"-Guidance Document-2019.
 2. All Traffic Management to be carried out in accordance with Chapter 8 of the "Traffic Signs Manual".
 3. Detailed Risk Assessment to be carried out prior to the installation of Traffic Management System.
 4. Exact sign positions to be agreed on site.
 5. All affected Parties and An Garda Siochana to be notified prior to works commencing.
 6. Signs to be positioned so as not to cause an obstruction to other road users.
 7. All signs to be faced with retro-reflective material to class ref 2 of EN 12899.
 8. "End of Roadworks" sign placed 20m to 50m from end of works area.
 15. If centre line coning not achievable cones to be placed along road edge.
 16. EMERGENCY SERVICES ALL MOVEMENTS ARE AVAILABLE WITH MARSHALS / TMO / GARDA.

Traffic Management Plans for "ON SITE Parking" Locations

Scale: N.T.S.



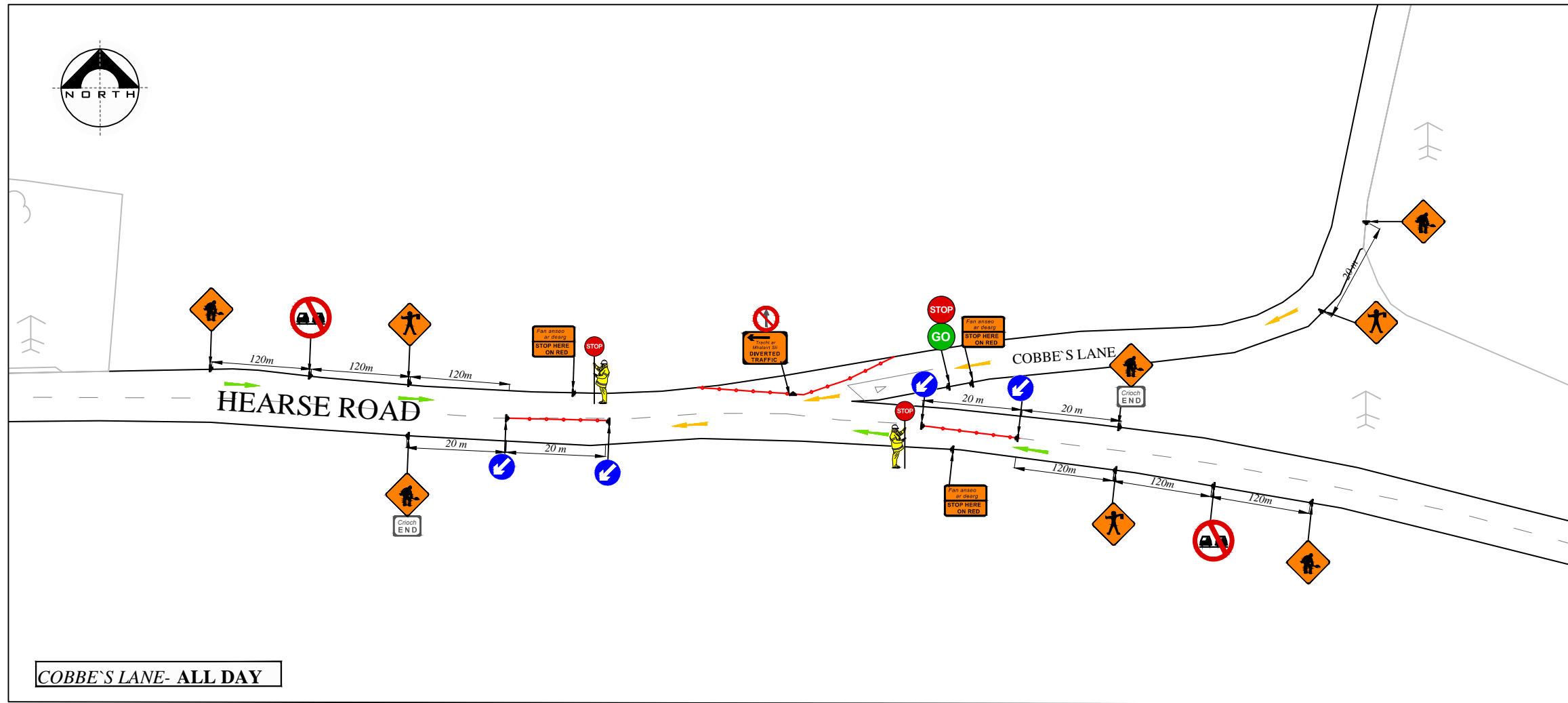
Rev:	Description:	Date:	Job Details:	Drawing:	Dwg no:
			Proposed Traffic Management Plan for Flavours of Fingal County Show at Newbridge Demesne	TMP for "Road Closures" & "ON SITE Parkings"	07
			Sheet:	Drawn By:	Rev:
			CAD File ref.:	DM	
				Date:	Scale:
				January 2024	As Shown



LEGEND

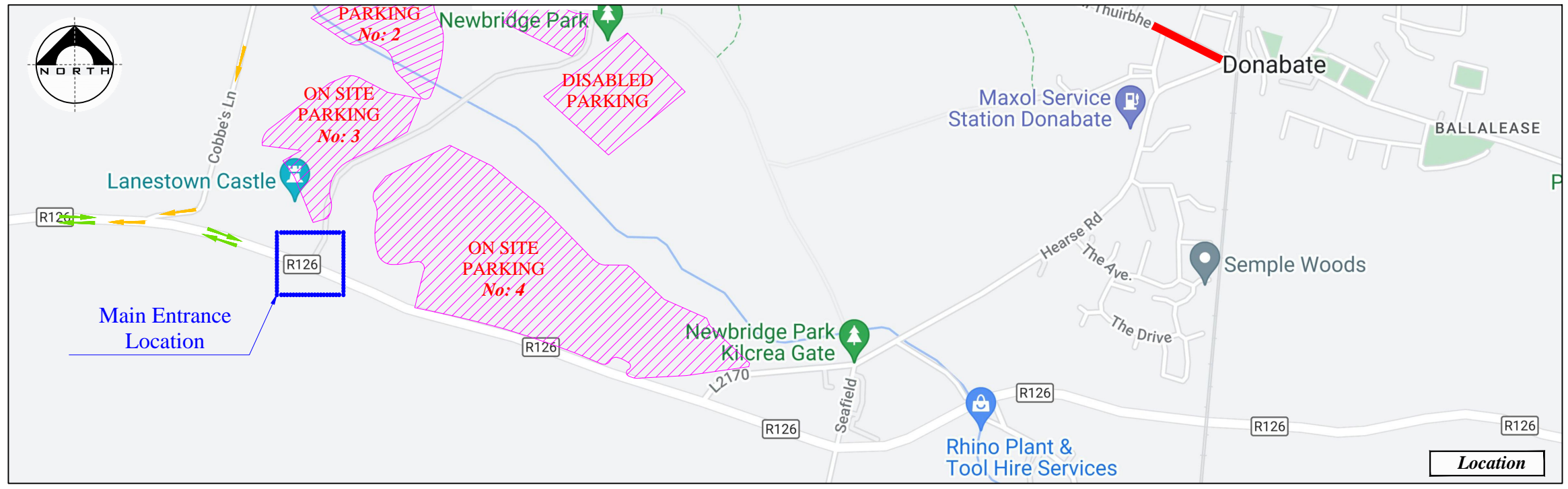
- Sign Location
- Traffic Cones
- Longitudinal Safety Zone
- Marshaled Pedestrian Crossing
- Event Parking
- Free Traffic Movements
- Marshaled Traffic Movements

Works TTM type:	Static Type A				
	Design Type A: >12h				
Design Parameters:	LV-1 (I)	LV-1 (III)	LV-1 (IV)	LV-2 (I)	LV-2 (II)
1. Minimum Sign Size mm	450	600	600	600	750
2. Statutory Speed of the Road	30km/h	50	60	80	100
3. Distance between Advance Signs	10m	20m	20m	120m	200m
4. Number of Advance Signs	1 (<12h) 2 (>12h)	2	2 (<12h) 3 (>12h)	3 (<12h) 4 (>12h)	3 (<12h) 4 (>12h)
5. Minimum Visibility of Signs	25m	50m	60m	90m	120m
6. Longitudinal Safety Zone	0.5m	5m	15m	45m	60m
7. Lateral Safety Zone	0.5m	0.5m	0.5m	1.2m	1.2m
8. Leading Taper	1in1m	1in5m	1in10m	1in40	1in100
9. Maximum at Tapers Cone Space	1m	3m	3m	3m	3m
10. Maximum Longitudinal Cone Space	3m	3m	6m	12m	12m
11. Lane Width (m)	2.5m	3 (2.5)	3 (2.5)	3 m	3 m
12. Two-way Roadway width (m)	5m	5m	5m	-	-



- Note:**
- All signs to comply with Chapter 8 of the "Traffic Signs Manual"-Guidance Document-2019.
 - All Traffic Management to be carried out in accordance with Chapter 8 of the "Traffic Signs Manual".
 - Detailed Risk Assessment to be carried out prior to the installation of Traffic Management System.
 - Exact sign positions to be agreed on site.
 - All affected Parties and An Garda Siochana to be notified prior to works commencing.
 - Signs to be positioned so as not to cause an obstruction to other road users.
 - All signs to be faced with retro-reflective material to class ref 2 of EN 12899.
 - "End of Roadworks" sign placed 20m to 50m from end of works area.
 - If centre line coning not achievable cones to be placed along road edge.
 - EMERGENCY SERVICES ALL MOVEMENTS ARE AVAILABLE WITH MARSHALS / TMO / GARDA.

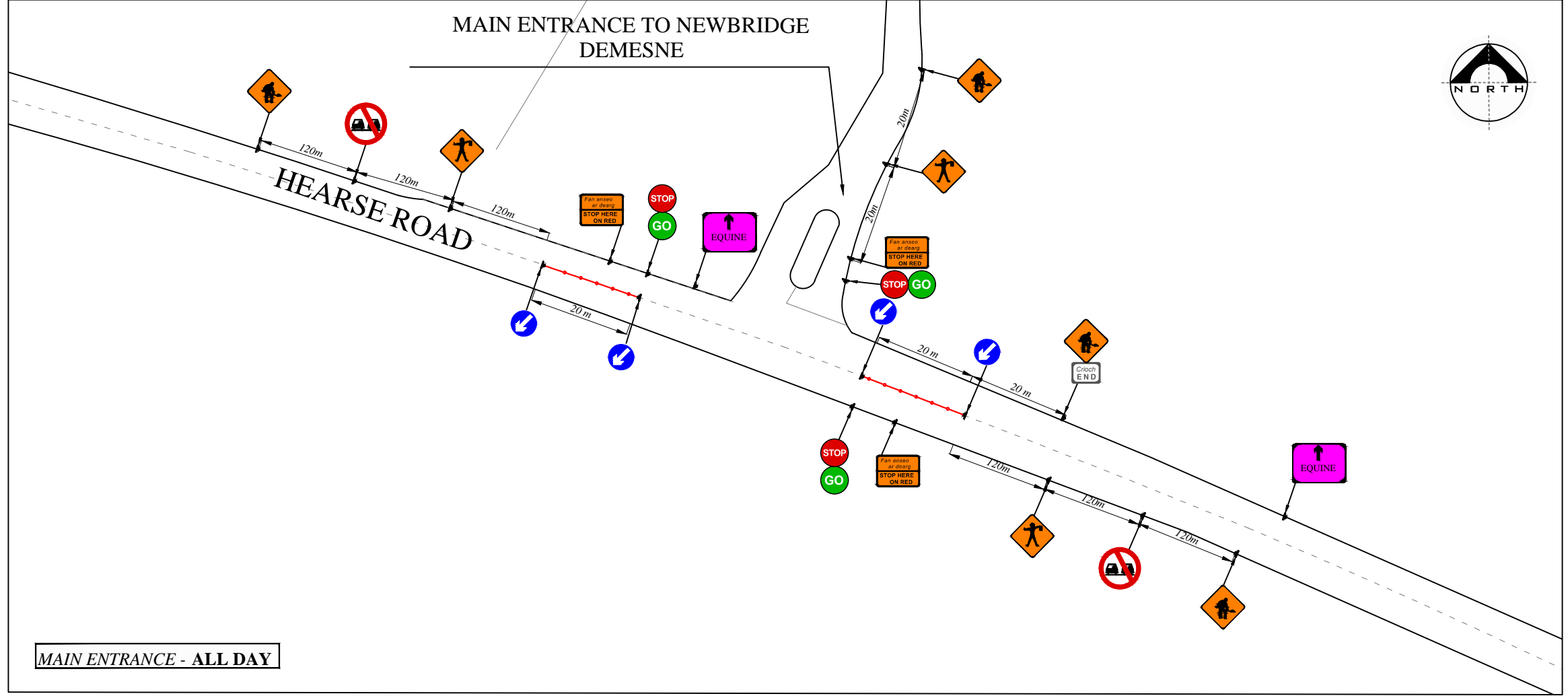
	Rev:	Description:	Date:	Job Details:	Drawing:	Dwg no:
				Proposed Traffic Management Plan for Flavours of Fingal County Show at Newbridge Demesne	TMP for "Free Flowing Movements" & "All Stop" System at Cobbe's Lane and Hearse rd Junction (Junction E Layout)	08
				Sheet:	CAD File ref.:	Rev:
				Drawn By:	Date:	Scale:
				DM	January 2024	As Shown



LEGEND

- Sign Location
- Traffic Cones
- Longitudinal Safety Zone
- Marshaled Pedestrian Crossing
- Event Parking
- Free Traffic Movements
- Marshaled Traffic Movements

Works TTM type:	Static Type A				
	Design Type A: >12h				
Design Parameters:	LV-1 (I)	LV-1 (III)	LV-1 (IV)	LV-2 (I)	LV-2 (II)
1. Minimum Sign Size mm	450	600	600	600	750
2. Statutory Speed of the Road	30km/h	50	60	80	100
3. Distance between Advance Signs	10m	20m	20m	20m	200m
4. Number of Advance Signs	1 (<12h) 2 (>12h)	2	2 (<12h) 3 (>12h)	4 (<12h) 4 (>12h)	3 (<12h) 4 (>12h)
5. Minimum Visibility of Signs	25m	50m	60m	90m	120m
6. Longitudinal Safety Zone	0.5m	5m	15m	45m	60m
7. Lateral Safety Zone	0.5m	0.5m	0.5m	1.2m	1.2m
8. Leading Taper	1in1m	1in5m	1in10m	1in40	1in100
9. Maximum at Tapers Cone Space	1m	3m	3m	3m	3m
10. Maximum Longitudinal Cone Space	3m	3m	6m	12m	12m
11. Lane Width (m)	2.5m	3 (2.5)	3 (2.5)	3 m	3 m
12. Two-way Roadway width (m)	5m	5m	5m	-	-



- Note:**
- All signs to comply with Chapter 8 of the "Traffic Signs Manual"-Guidance Document-2019.
 - All Traffic Management to be carried out in accordance with Chapter 8 of the "Traffic Signs Manual".
 - Detailed Risk Assessment to be carried out prior to the installation of Traffic Management System.
 - Exact sign positions to be agreed on site.
 - All affected Parties and An Garda Siochana to be notified prior to works commencing.
 - Signs to be positioned so as not to cause an obstruction to other road users.
 - All signs to be faced with retro-reflective material to class ref 2 of EN 12899.
 - "End of Roadworks" sign placed 20m to 50m from end of works area.
 - If centre line coning not achievable cones to be placed along road edge.
 - EMERGENCY SERVICES ALL MOVEMENTS ARE AVAILABLE WITH MARSHALS / TMO / GARDA.

	Rev:	Description:	Date:	Job Details:	Drawing:	Dwg no:
				Proposed Traffic Management Plan for Flavours of Fingal County Show at Newbridge Demesne	TMP for Public transport, Disabled, and Staff entrance Main Entrance to Newbridge Demesne	09
				Sheet:	Drawn By:	Rev:
				CAD File ref.:	Date:	Scale:
				DM	January 2024	As Shown



LEGEND

- Sign Location
- Traffic Cones
- Longitudinal Safety Zone
- Marshaled Pedestrian Crossing
- Event Parking
- Free Traffic Movements
- Marshaled Traffic Movements

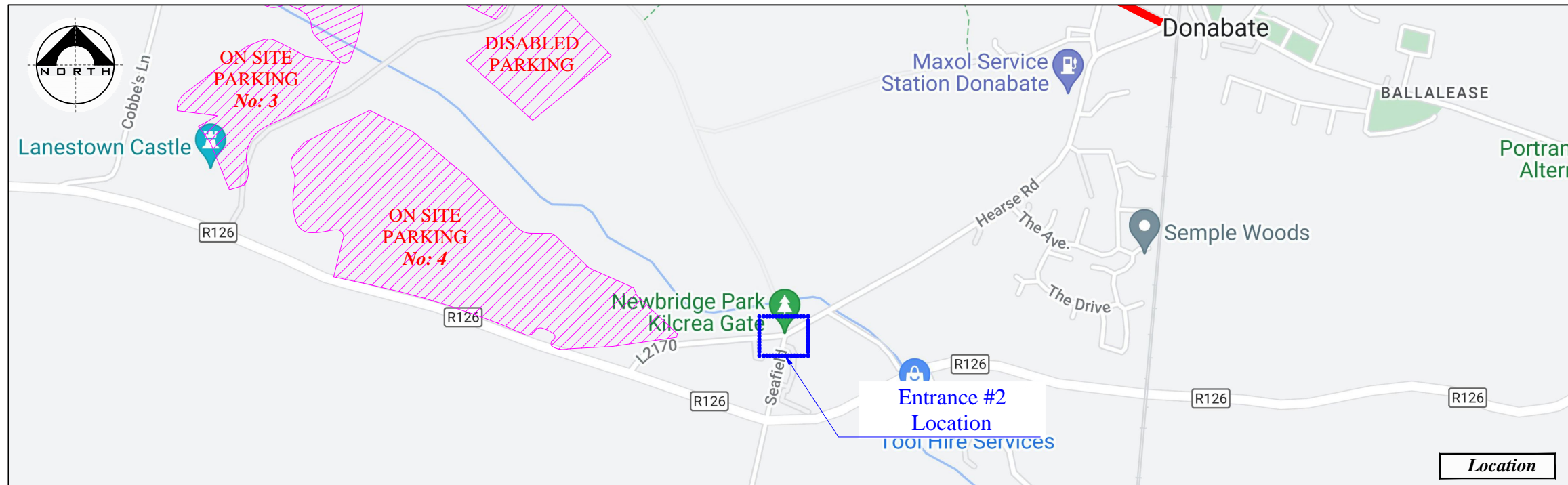
Works TTM type:	Static Type A				
	Design Type A: >12h				
Design Parameters:	LV-1 (I)	LV-1 (III)	LV-1 (IV)	LV-2 (I)	LV-2 (II)
1. Minimum Sign Size mm	450	600	600	600	750
2. Statutory Speed of the Road	30km/h	50	60	80	100
3. Distance between Advance Signs	10m	20m	20m	120m	200m
4. Number of Advance Signs	1 (<12h) 2 (>12h)	2	3 (<12h) 2 (>12h)	3 (<12h) 4 (>12h)	3 (<12h) 4 (>12h)
5. Minimum Visibility of Signs	25m	50m	60m	90m	120m
6. Longitudinal Safety Zone	0.5m	5m	15m	45m	60m
7. Lateral Safety Zone	0.5m	0.5m	0.5m	1.2m	1.2m
8. Leading Taper	1in1m	1in5m	1in10m	1in40	1in100
9. Maximum at Tapers Cone Space	1m	3m	3m	3m	3m
10. Maximum Longitudinal Cone Space	3m	3m	6m	12m	12m
11. Lane Width (m)	2.5m	3 (2.5)	3 (2.5)	3 m	3 m
12. Two-way Roadway width (m)	5m	5m	5m	-	-

- Note:**
1. All signs to comply with Chapter 8 of the "Traffic Signs Manual"-Guidance Document-2019.
 2. All Traffic Management to be carried out in accordance with Chapter 8 of the "Traffic Signs Manual".
 3. Detailed Risk Assessment to be carried out prior to the installation of Traffic Management System.
 4. Exact sign positions to be agreed on site.
 5. All affected Parties and An Garda Siochana to be notified prior to works commencing.
 6. Signs to be positioned so as not to cause an obstruction to other road users.
 7. All signs to be faced with retro-reflective material to class ref 2 of EN 12899.
 8. "End of Roadworks" sign placed 20m to 50m from end of works area.
 15. If centre line coning not achievable cones to be placed along road edge.
 16. EMERGENCY SERVICES ALL MOVEMENTS ARE AVAILABLE WITH MARSHALS / TMO / GARDA.

Traffic Management Plans for "Road Closure" at Donabate
Scale: N.T.S.



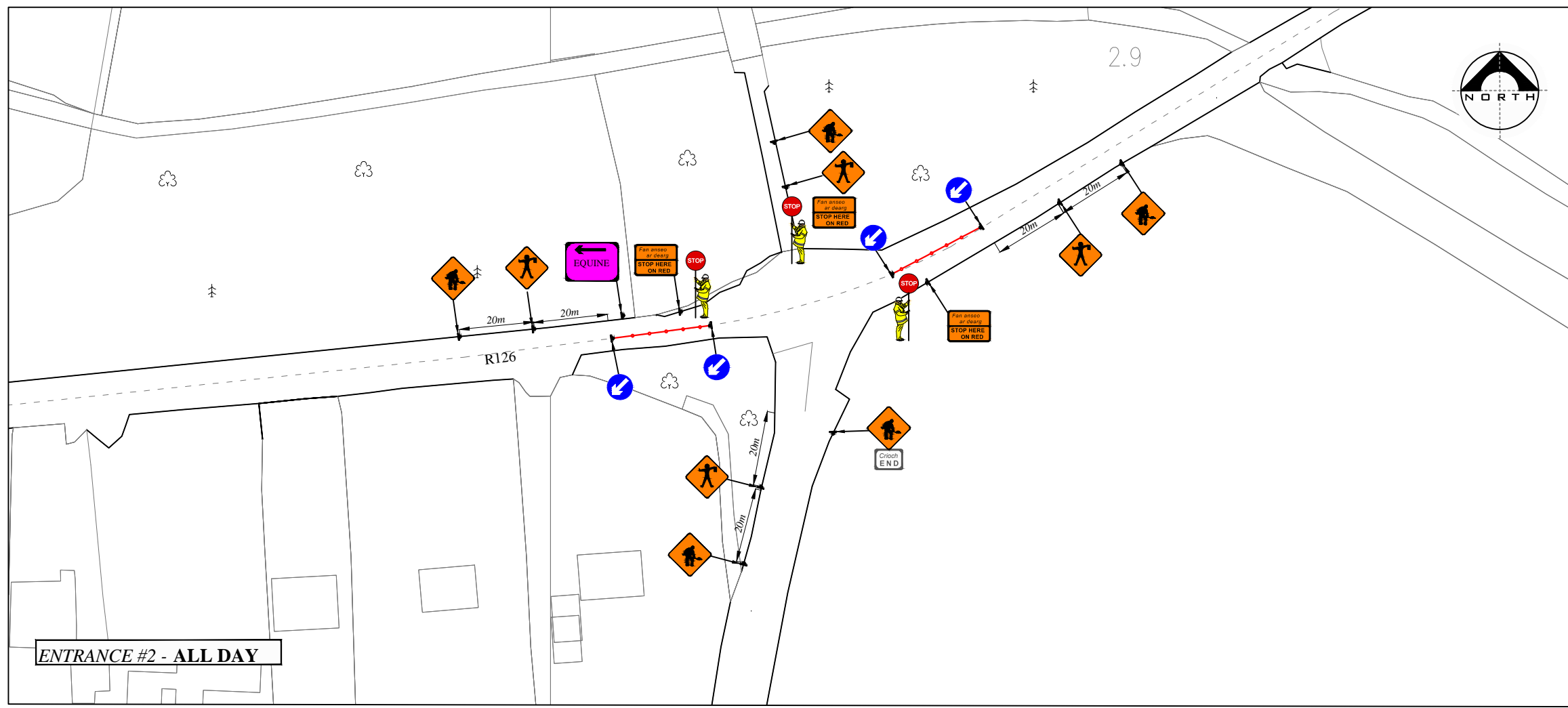
	Rev:	Description:	Date:	Job Details:	Drawing:	Dwg no:
				Proposed Traffic Management Plan for Flavours of Fingal County Show at Newbridge Demesne	TMP for "Road Closure" System	10
				Sheet:	Drawn By:	Rev:
				CAD File ref.:	DM	As Shown
				Date:	January 2024	



LEGEND

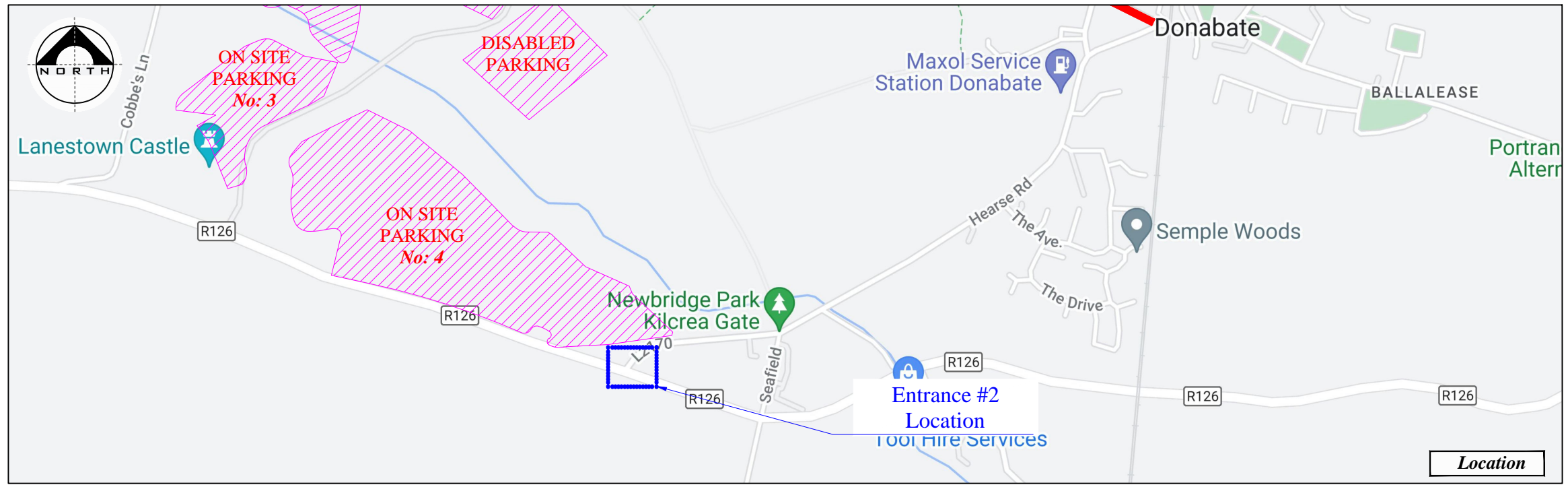
- Sign Location
- Traffic Cones
- Longitudinal Safety Zone
- Marshaled Pedestrian Crossing
- Event Parking
- Free Traffic Movements
- Marshaled Traffic Movements

Works TTM type:	Static Type A				
Design Parameters:	Design Type A: >12h				
	LV-1 (I)	LV-1 (III)	LV-1 (IV)	LV-2 (I)	LV-2 (II)
1. Minimum Sign Size mm	450	600	600	600	750
2. Statutory Speed of the Road	30km/h	50	60	80	100
3. Distance between Advance Signs	10m	20m	20m	120m	200m
4. Number of Advance Signs	1 (<12h) 2 (>12h)	2	3 (<12h) 2 (>12h)	4 (<12h) 4 (>12h)	3 (<12h) 4 (>12h)
5. Minimum Visibility of Signs	25m	50m	60m	90m	120m
6. Longitudinal Safety Zone	0.5m	5m	15m	45m	60m
7. Lateral Safety Zone	0.5m	0.5m	0.5m	1.2m	1.2m
8. Leading Taper	1in1m	1in5m	1in10m	1in40	1in100
9. Maximum at Tapers Cone Space	1m	3m	3m	3m	3m
10. Maximum Longitudinal Cone Space	3m	3m	6m	12m	12m
11. Lane Width (m)	2.5m	3 (2.5)	3 (2.5)	3 m	3 m
12. Two-way Roadway width (m)	5m	5m	5m	-	-



- Note:**
1. All signs to comply with Chapter 8 of the "Traffic Signs Manual"-Guidance Document-2019.
 2. All Traffic Management to be carried out in accordance with Chapter 8 of the "Traffic Signs Manual".
 3. Detailed Risk Assessment to be carried out prior to the installation of Traffic Management System.
 4. Exact sign positions to be agreed on site.
 5. All affected Parties and An Garda Siochana to be notified prior to works commencing.
 6. Signs to be positioned so as not to cause an obstruction to other road users.
 7. All signs to be faced with retro-reflective material to class ref 2 of EN 12899.
 8. "End of Roadworks" sign placed 20m to 50m from end of works area.
 15. If centre line coning not achievable cones to be placed along road edge.
 16. EMERGENCY SERVICES ALL MOVEMENTS ARE AVAILABLE WITH MARSHALS / TMO / GARDA.

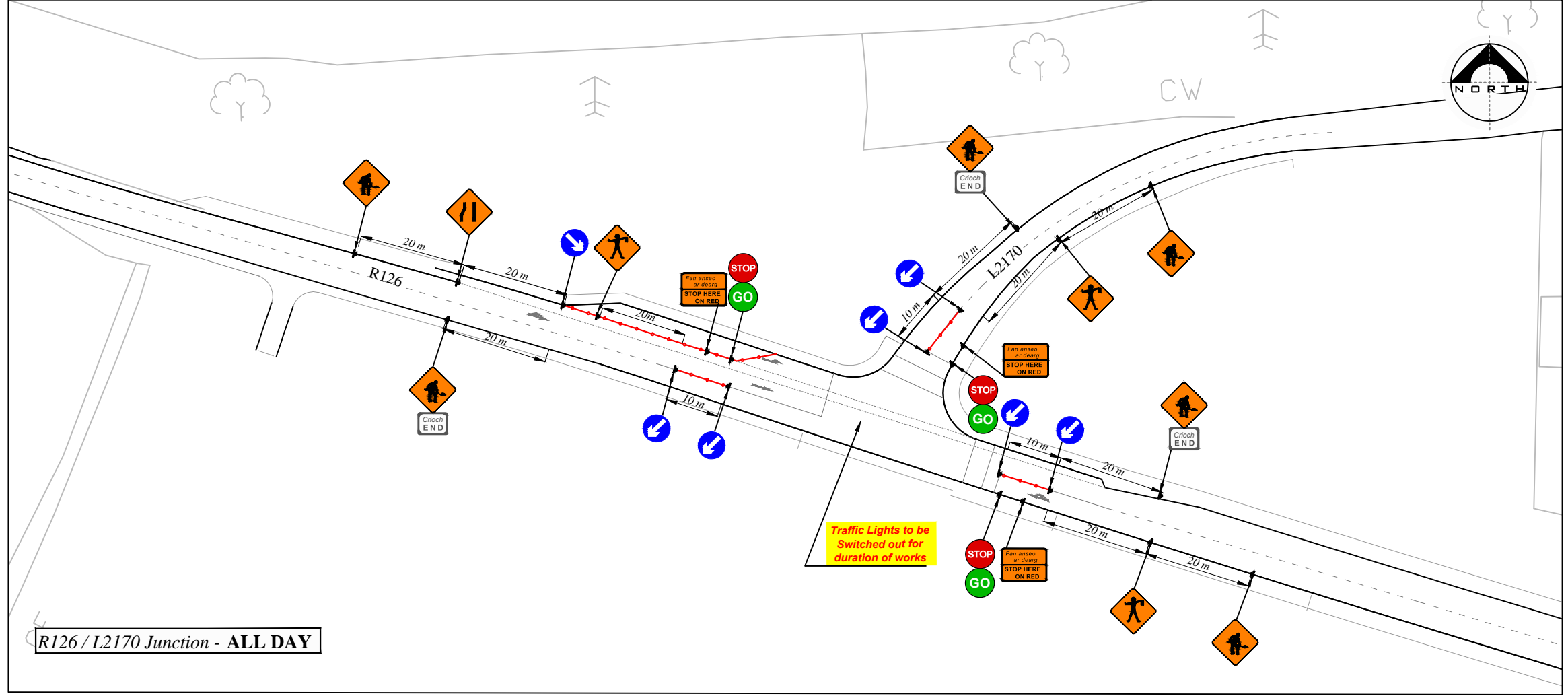
	Rev:	Description:	Date:	Job Details:	Drawing:	Dwg no:
				Proposed Traffic Management Plan for Flavours of Fingal County Show at Newbridge Demesne	TMP for On Site Parking, Entrance #2	11
				Sheet:	Drawn By:	Rev:
				CAD File ref.:	DM	
					Date:	Scale:
					January 2024	As Shown



LEGEND

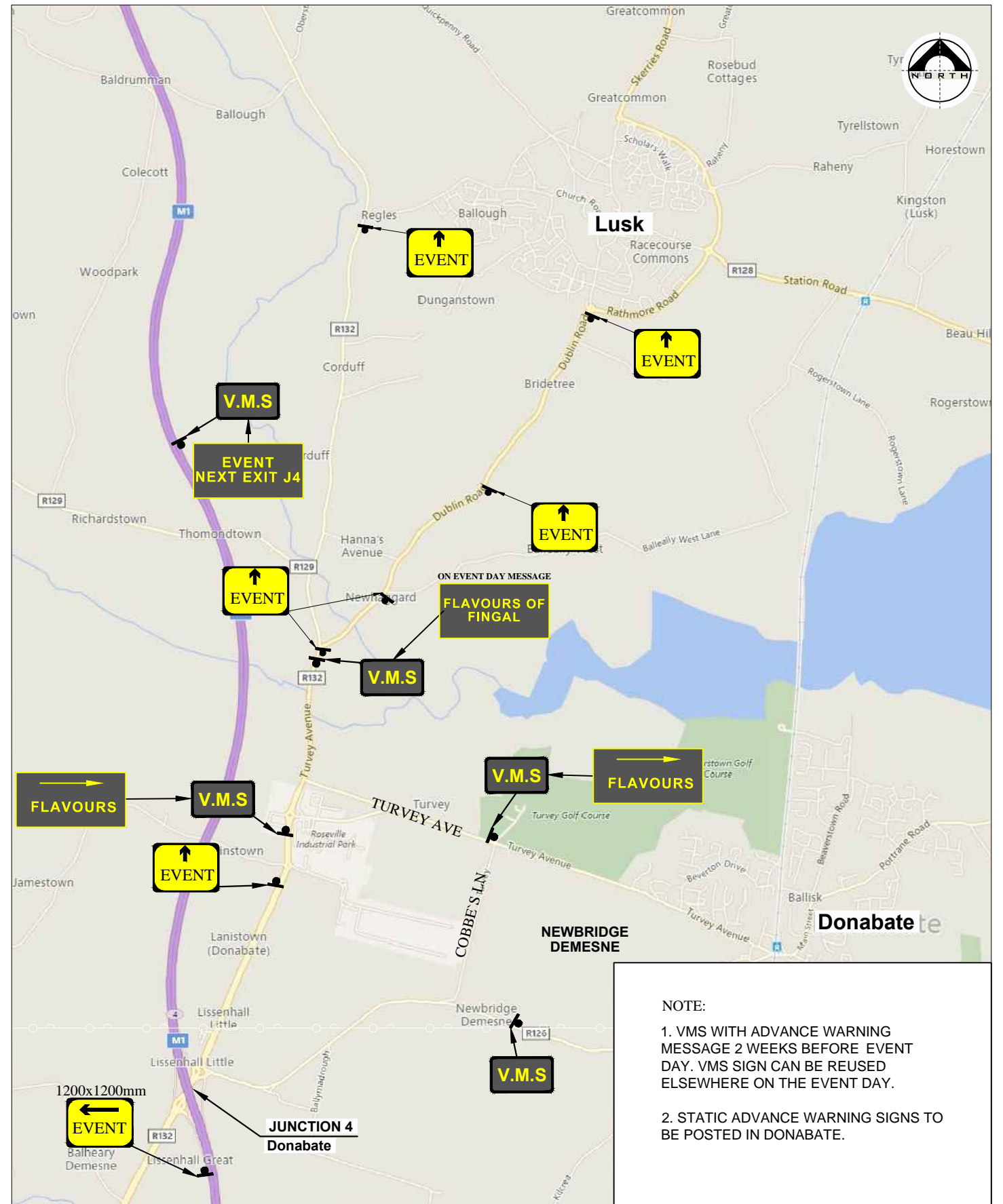
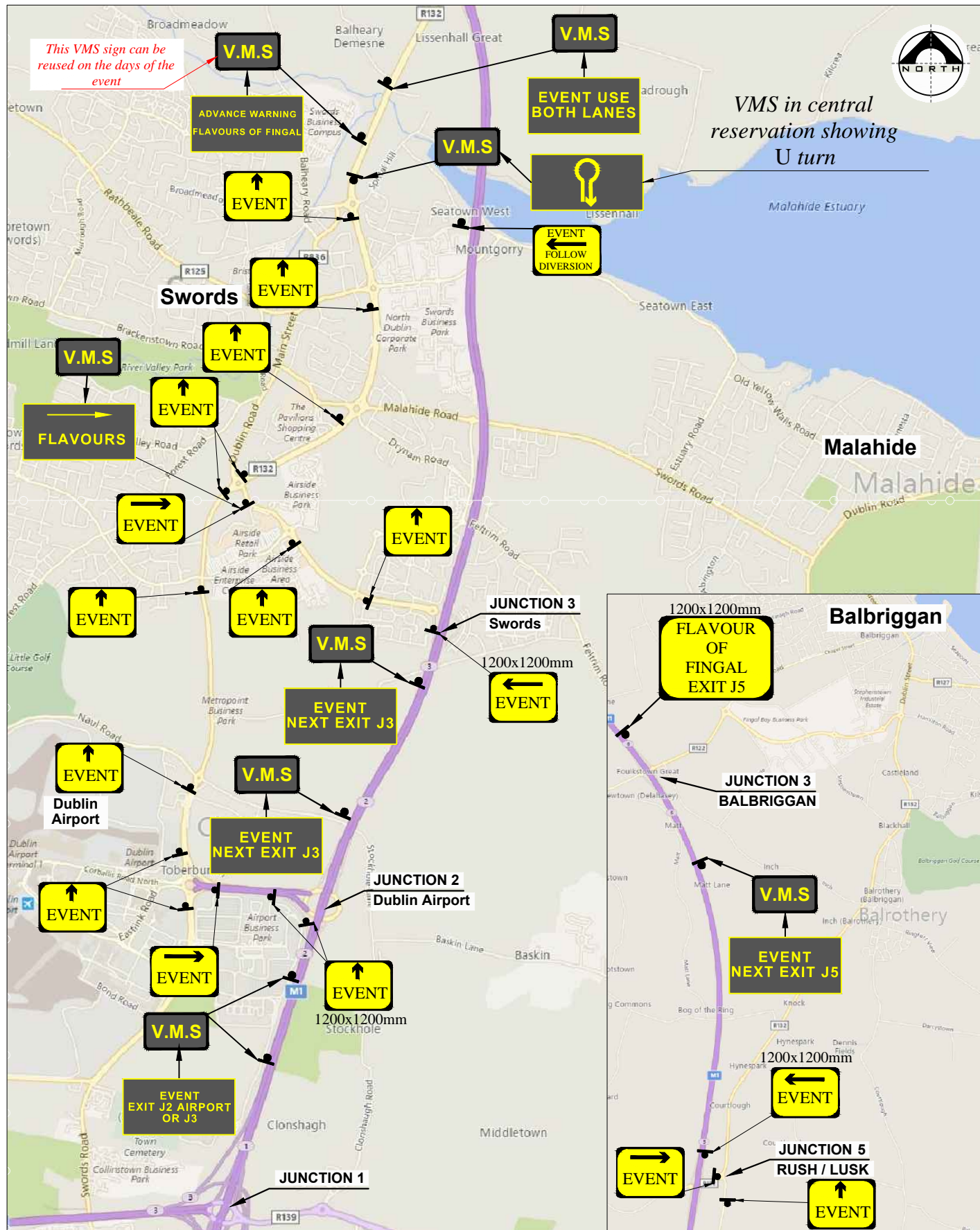
- Sign Location
- Traffic Cones
- Longitudinal Safety Zone
- Marshaled Pedestrian Crossing
- Event Parking
- Free Traffic Movements
- Marshaled Traffic Movements

Works TTM type:	Static Type A				
	Design Type A: >12h				
Design Parameters:	LV-1 (I)	LV-1 (III)	LV-1 (IV)	LV-2 (I)	LV-2 (II)
1. Minimum Sign Size mm	450	600	600	600	750
2. Statutory Speed of the Road	30km/h	50	60	80	100
3. Distance between Advance Signs	10m	20m	20m	120m	200m
4. Number of Advance Signs	1 (<12h) 2 (>12h)	2	2 (<12h) 3 (>12h)	4 (<12h) 4 (>12h)	4 (>12h)
5. Minimum Visibility of Signs	25m	50m	60m	90m	120m
6. Longitudinal Safety Zone	0.5m	5m	15m	45m	60m
7. Lateral Safety Zone	0.5m	0.5m	0.5m	1.2m	1.2m
8. Leading Taper	1in1m	1in5m	1in10m	1in40	1in100
9. Maximum at Tapers Cone Space	1m	3m	3m	3m	3m
10. Maximum Longitudinal Cone Space	3m	3m	6m	12m	12m
11. Lane Width (m)	2.5m	3 (2.5)	3 (2.5)	3 m	3 m
12. Two-way Roadway width (m)	5m	5m	5m	-	-



- Note:**
1. All signs to comply with Chapter 8 of the "Traffic Signs Manual"-Guidance Document-2019.
 2. All Traffic Management to be carried out in accordance with Chapter 8 of the "Traffic Signs Manual".
 3. Detailed Risk Assessment to be carried out prior to the installation of Traffic Management System.
 4. Exact sign positions to be agreed on site.
 5. All affected Parties and An Garda Siochana to be notified prior to works commencing.
 6. Signs to be positioned so as not to cause an obstruction to other road users.
 7. All signs to be faced with retro-reflective material to class ref 2 of EN 12899.
 8. "End of Roadworks" sign placed 20m to 50m from end of works area.
 15. If centre line coning not achievable cones to be placed along road edge.
 16. EMERGENCY SERVICES ALL MOVEMENTS ARE AVAILABLE WITH MARSHALS / TMO / GARDA.

	Rev:	Description:	Date:	Job Details:	Drawing:	Dwg no:
				Proposed Traffic Management Plan for Flavours of Fingal County Show at Newbridge Demesne	TMP for R126 / L2170 Junction	12
				Sheet:	CAD File ref.:	Rev:
					Drawn By:	Scale:
					DM	As Shown
					Date:	
					January 2024	



Rev:	Description:	Date:	Job Details:	Drawing:		Dwg no:
			Proposed Traffic Management Plan for Flavours of Fingal County Show at Newbridge Demesne	VMS Advance Warning Location.		13
			Sheet:	CAD File ref.:	Drawn By:	Rev:
					DM	
					Date:	Scale:
					January 2024	As Shown