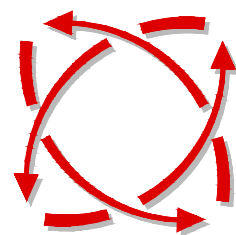


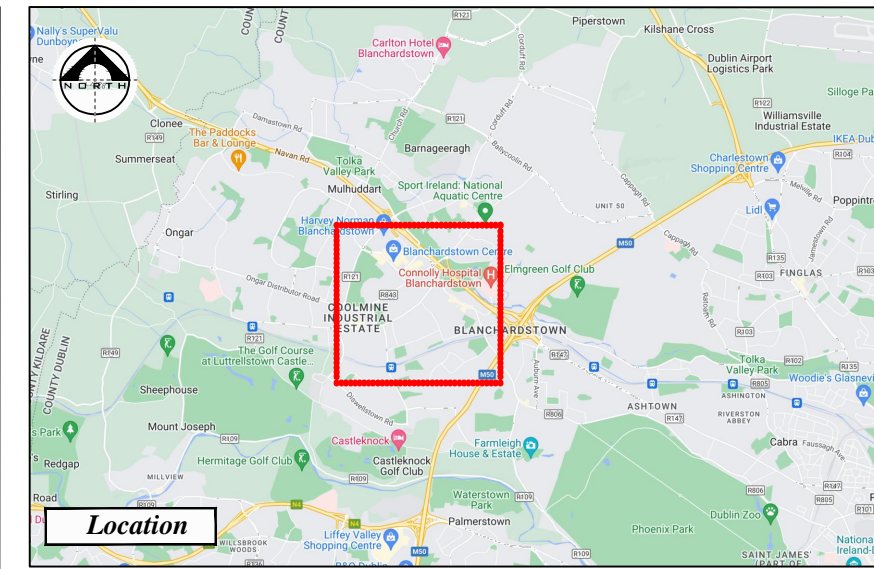
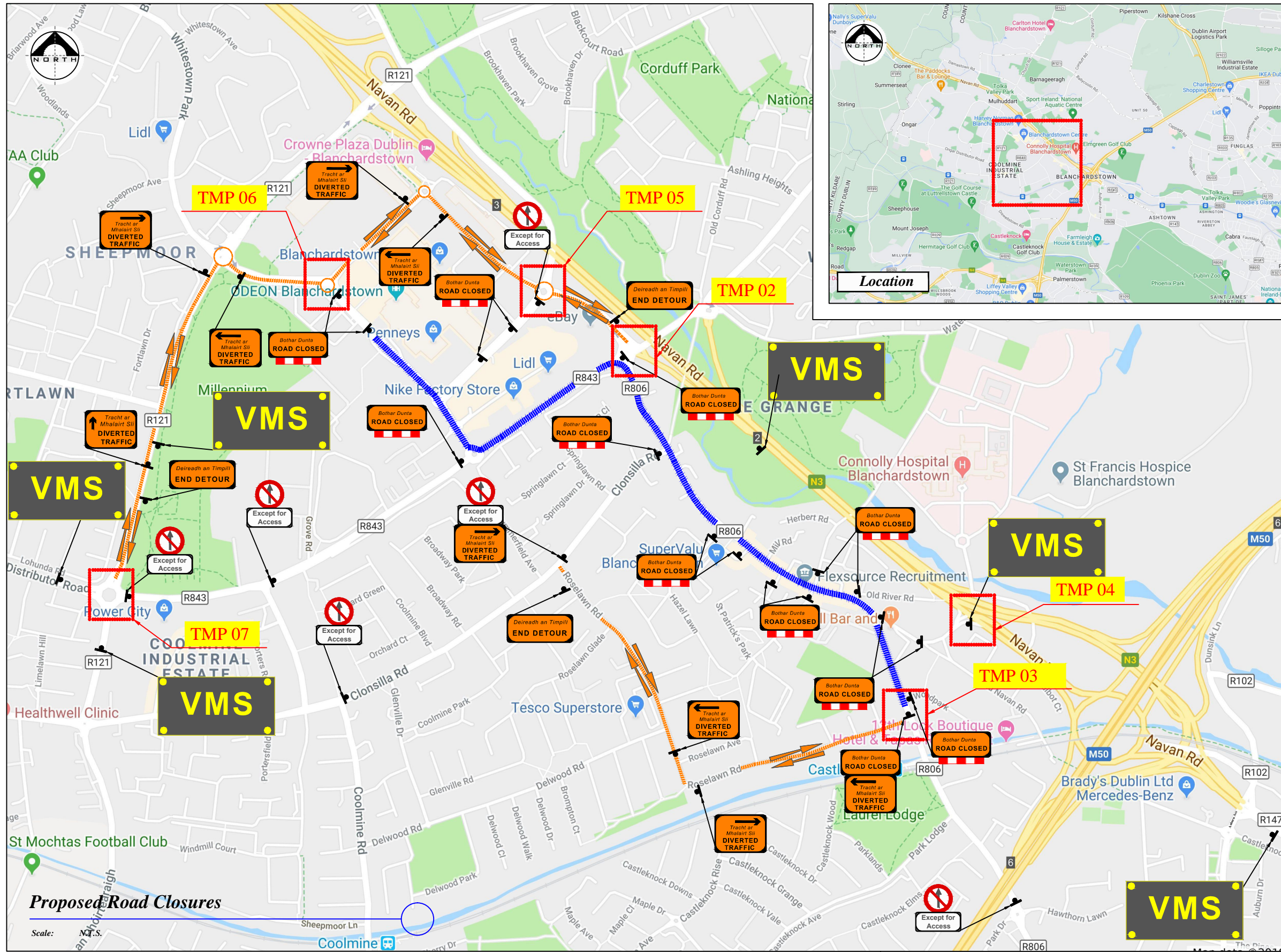
***PROPOSED TRAFFIC
MANAGEMENT SCHEME***

for

***St Patrick`s Day
Blanchardstown
2024***



***FREEFLOW
TRAFFIC
MANAGEMENT***



LEGEND

- Sign Location
- Traffic Cones
- Approved Barrier
- Event Route
- Diversion Route

Design Parameters:

	LV-1	LV-2
1. Statutory Speed of the Road	30	30-60
2. Distance between Advance Signs	25m	25m
3. Number of Advance Signs	2	3
4. Minimum Visibility of Signs	50m	50m
5. Longitudinal Safety Zone	5m	25m
6. Lateral Safety Zone	0.5m	0.5m
7. Leading Taper	45°	45°
8. Maximum at Tapers Cone Space	1m	1m
9. Maximum Longitudinal Cone Space	6m	6m

- Note:**
- All signs to comply with Chapter 8 of the "Traffic Signs Manual"-Guidance Document.
 - All Traffic Management to be carried out in accordance with Chapter 8 of the "Traffic Signs Manual".
 - Detailed Risk Assessment to be carried out prior to the installation of Traffic Management System.
 - The Contractor shall be responsible for providing all required ramp access to all changes in road surface level where traffic runs on a temporary surface and also for cycle/pedestrian ramps where footpath, cycle paths or any surface which has a level discontinuity as a result of the works.
 - Exact sign positions to be agreed on site.
 - All safety zones to be maintained at all times.
 - All affected Parties and An Garda Síochána to be notified prior to works commencing.
 - Signs to be positioned so as not to cause an obstruction to other road users.
 - Minimum lane width of 3,25m to be maintained at all times.
 - All signs dimensions to be per Table 8.2.5 and faced with retro-reflective material to class ref 2 of EN 12899.
 - All delineation devices should be designed in accordance with IS EN 13422.
 - All signage shall be per Tables 8.2.1, 8.2.2 and 8.2.4 of the Chapter 8 "Traffic Signs Manual"
 - Safety barrier to be in accordance with IS EN 1317.
 - "End of Roadworks" sign placed 20m to 50m from end of works area.
 - Road Closures to be manned.



Rev:	Description:	Date:

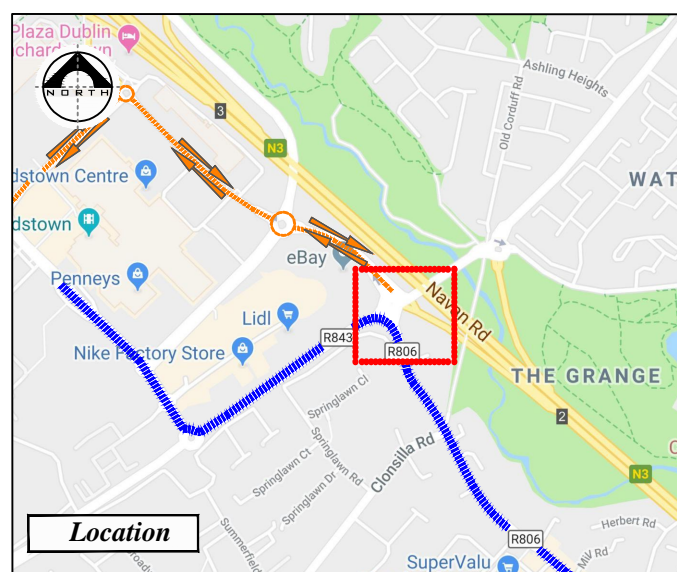
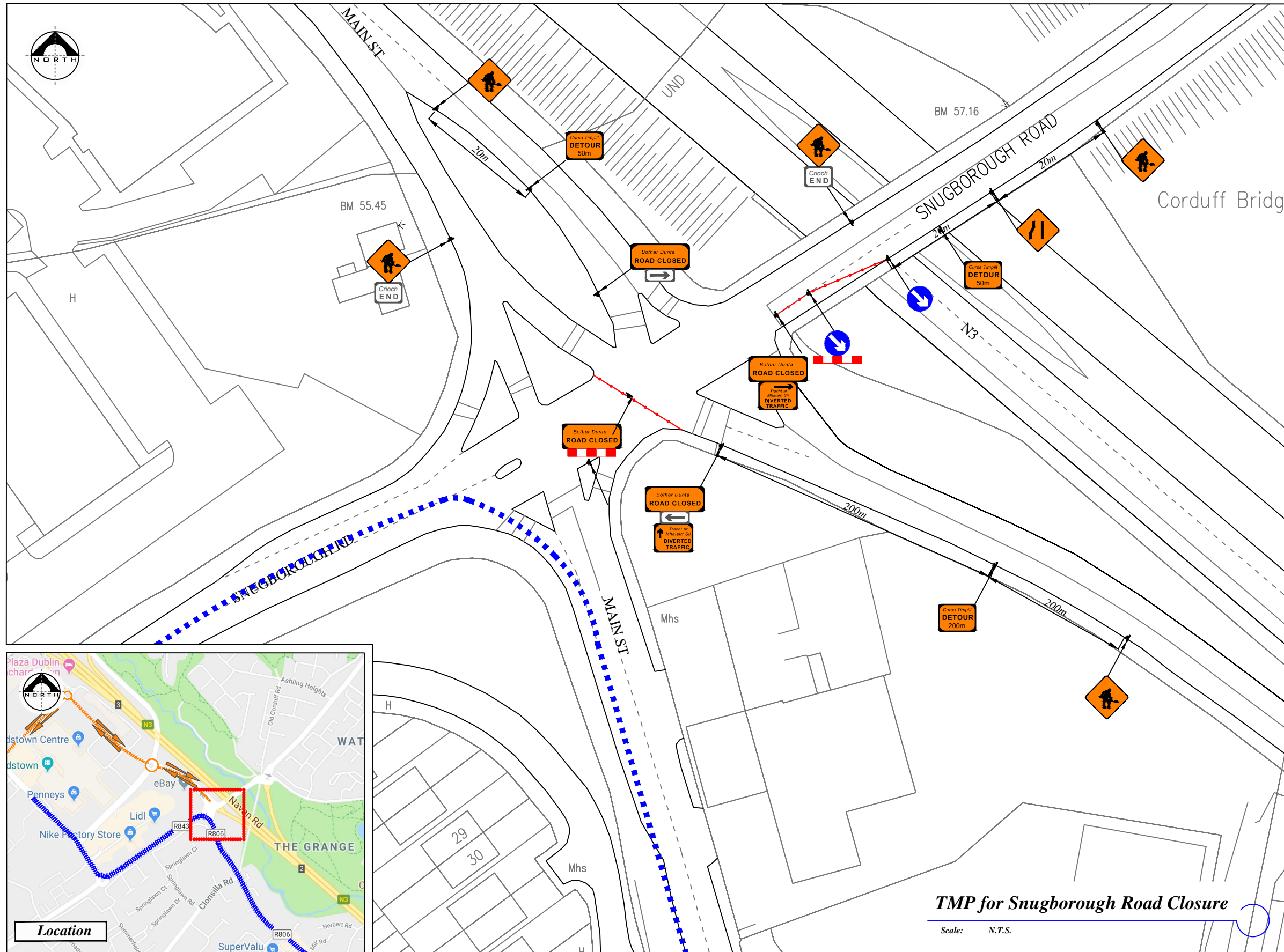
Job Details:
 Proposed Traffic Management Plan for Saint Patrick's Day Parade at Blanchardstown, Dublin 2024

Sheet: CAD File ref.:

Drawing:
 Proposed Road Closures

Drawn By: DM
 Date: January 2024
 Scale: As Shown

Dwg no: 01
 Rev:



LEGEND

- Sign Location
- Traffic Cones
- Approved Barrier
- Event Route
- Diversion Route

Design Parameters:	LV-1	LV-2
1. Statutory Speed of the Road	30	30-60
2. Distance between Advance Signs	25m	25m
3. Number of Advance Signs	2	3
4. Minimum Visibility of Signs	50m	50m
5. Longitudinal Safety Zone	5m	25m
6. Lateral Safety Zone	0.5m	0.5m
7. Leading Taper	45°	45°
8. Maximum at Tapers Cone Space	1m	1m
9. Maximum Longitudinal Cone Space	6m	6m

- Note:**
- All signs to comply with Chapter 8 of the "Traffic Signs Manual"-Guidance Document.
 - All Traffic Management to be carried out in accordance with Chapter 8 of the "Traffic Signs Manual".
 - Detailed Risk Assessment to be carried out prior to the installation of Traffic Management System.
 - The Contractor shall be responsible for providing all required ramp access to all changes in road surface level where traffic runs on a temporary surface and also for cycle/pedestrian ramps where footpath, cycle paths or any surface which has a level discontinuity as a result of the works.
 - Exact sign positions to be agreed on site.
 - All safety zones to be maintained at all times.
 - All affected Parties and An Garda Síochana to be notified prior to works commencing.
 - Signs to be positioned so as not to cause an obstruction to other road users.
 - Minimum lane width of 3,25m to be maintained at all times.
 - All signs dimensions to be per Table 8.2.5 and faced with retro-reflective material to class ref 2 of EN 12899.
 - All delineation devices should be designed in accordance with IS EN 13422.
 - All signage shall be per Tables 8.2.1, 8.2.2 and 8.2.4 of the Chapter 8 "Traffic Signs Manual"
 - Safety barrier to be in accordance with IS EN 1317.
 - "End of Roadworks" sign placed 20m to 50m from end of works area.
 - Road Closures to be manned.

TMP for Snugborough Road Closure

Scale: N.T.S.

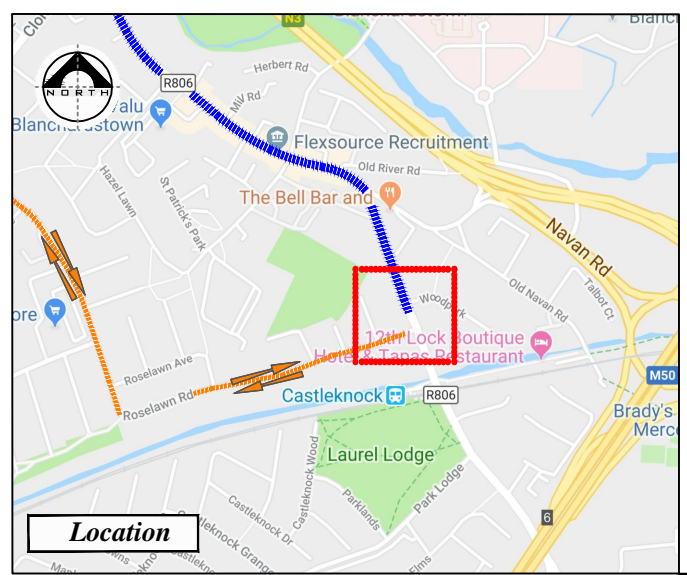
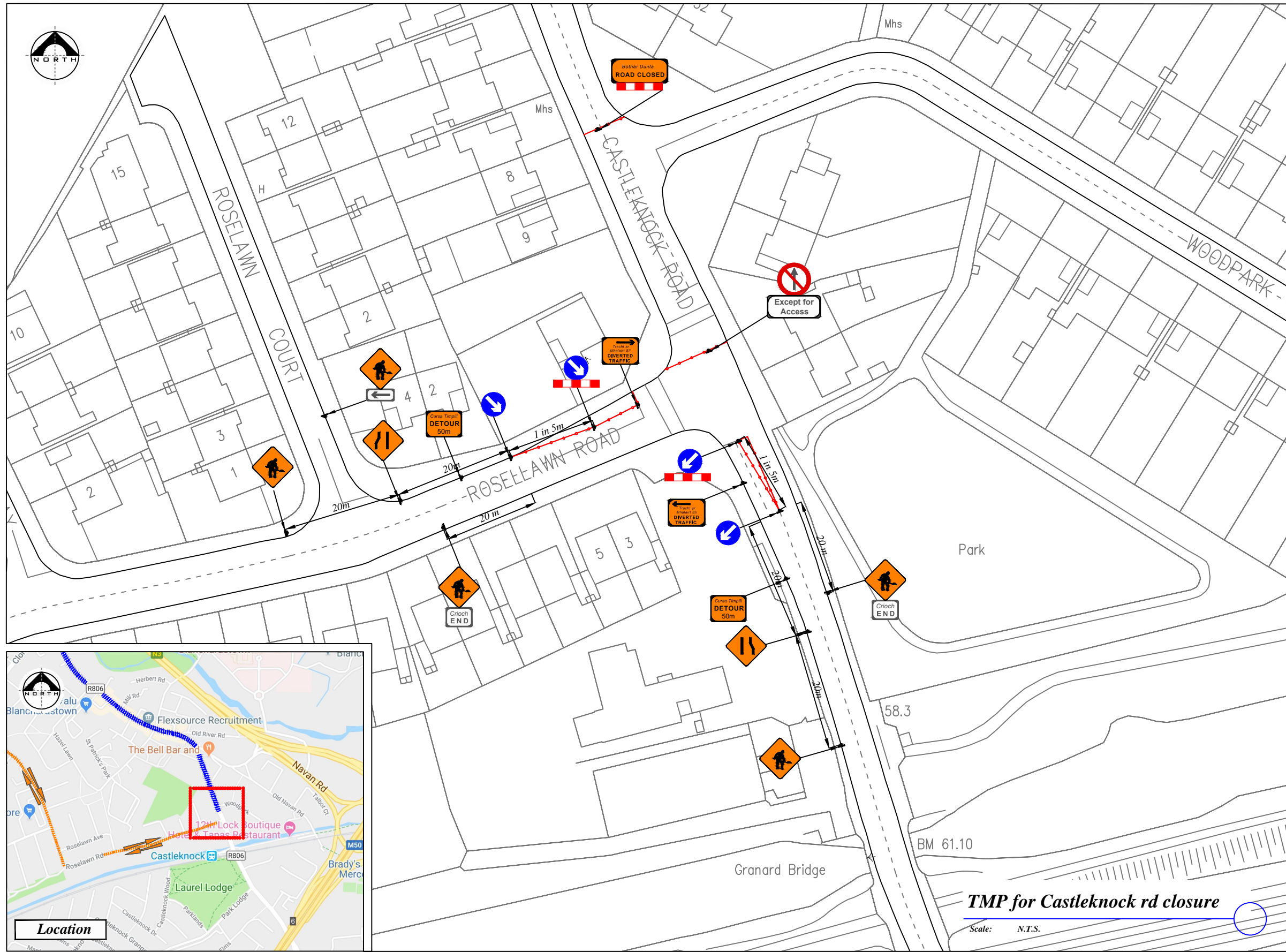


Rev:	Description:	Date:

Job Details: Proposed Traffic Management Plan for Saint Patrick Day Parade at Blanchardstown, Dublin 2024	
Sheet:	CAD File ref.:

Drawing: TMP for Snugborough Road Closure	
Drawn By:	Date:
DM	January 2024

Dwg no:	02
Rev:	
Scale:	As Shown



LEGEND

- Sign Location
- Traffic Cones
- Approved Barrier
- Event Route
- Diversion Route

Design Parameters:	LV-1	LV-2
1. Statutory Speed of the Road	30	30-60
2. Distance between Advance Signs	25m	25m
3. Number of Advance Signs	2	3
4. Minimum Visibility of Signs	50m	50m
5. Longitudinal Safety Zone	5m	25m
6. Lateral Safety Zone	0.5m	0.5m
7. Leading Taper	45°	45°
8. Maximum at Tapers Cone Space	1m	1m
9. Maximum Longitudinal Cone Space	6m	6m

- Note:**
- All signs to comply with Chapter 8 of the "Traffic Signs Manual"-Guidance Document.
 - All Traffic Management to be carried out in accordance with Chapter 8 of the "Traffic Signs Manual".
 - Detailed Risk Assessment to be carried out prior to the installation of Traffic Management System.
 - The Contractor shall be responsible for providing all required ramp access to all changes in road surface level where traffic runs on a temporary surface and also for cycle/pedestrian ramps where footpath, cycle paths or any surface which has a level discontinuity as a result of the works.
 - Exact sign positions to be agreed on site.
 - All safety zones to be maintained at all times.
 - All affected Parties and An Garda Síochana to be notified prior to works commencing.
 - Signs to be positioned so as not to cause an obstruction to other road users.
 - Minimum lane width of 3,25m to be maintained at all times.
 - All signs dimensions to be per Table 8.2.5 and faced with retro-reflective material to class ref 2 of EN 12899.
 - All delineation devices should be designed in accordance with IS EN 13422.
 - All signage shall be per Tables 8.2.1, 8.2.2 and 8.2.4 of the Chapter 8 "Traffic Signs Manual"
 - Safety barrier to be in accordance with IS EN 1317.
 - "End of Roadworks" sign placed 20m to 50m from end of works area.
 - Road Closures to be manned.



Rev:	Description:	Date:

Job Details:
 Proposed Traffic Management Plan for Saint Patrick Day Parade at Blanchardstown, Dublin 2024

Sheet: CAD File ref.:

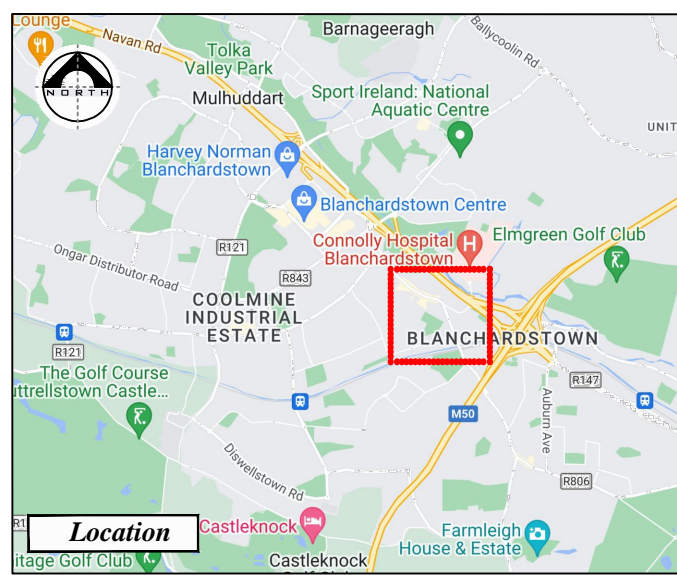
Drawing:
 TMP for Castleknock rd closure

Drawn By: Date:
 DM January 2024

Dwg no:
 03

Rev:

Scale:
 As Shown



LEGEND

- Sign Location
- Traffic Cones
- Approved Barrier
- Event Route
- Diversion Route

Design Parameters:	LV-1	LV-2
1. Statutory Speed of the Road	30	30-60
2. Distance between Advance Signs	25m	25m
3. Number of Advance Signs	2	3
4. Minimum Visibility of Signs	50m	50m
5. Longitudinal Safety Zone	5m	25m
6. Lateral Safety Zone	0.5m	0.5m
7. Leading Taper	45°	45°
8. Maximum at Tapers Cone Space	1m	1m
9. Maximum Longitudinal Cone Space	6m	6m

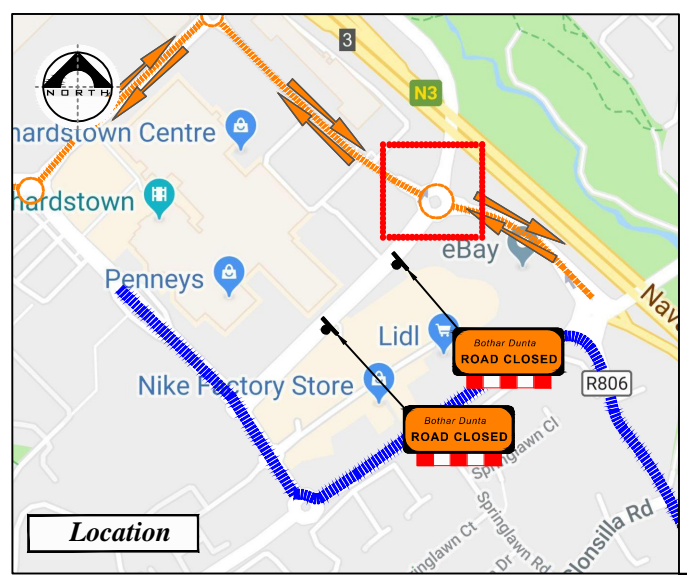
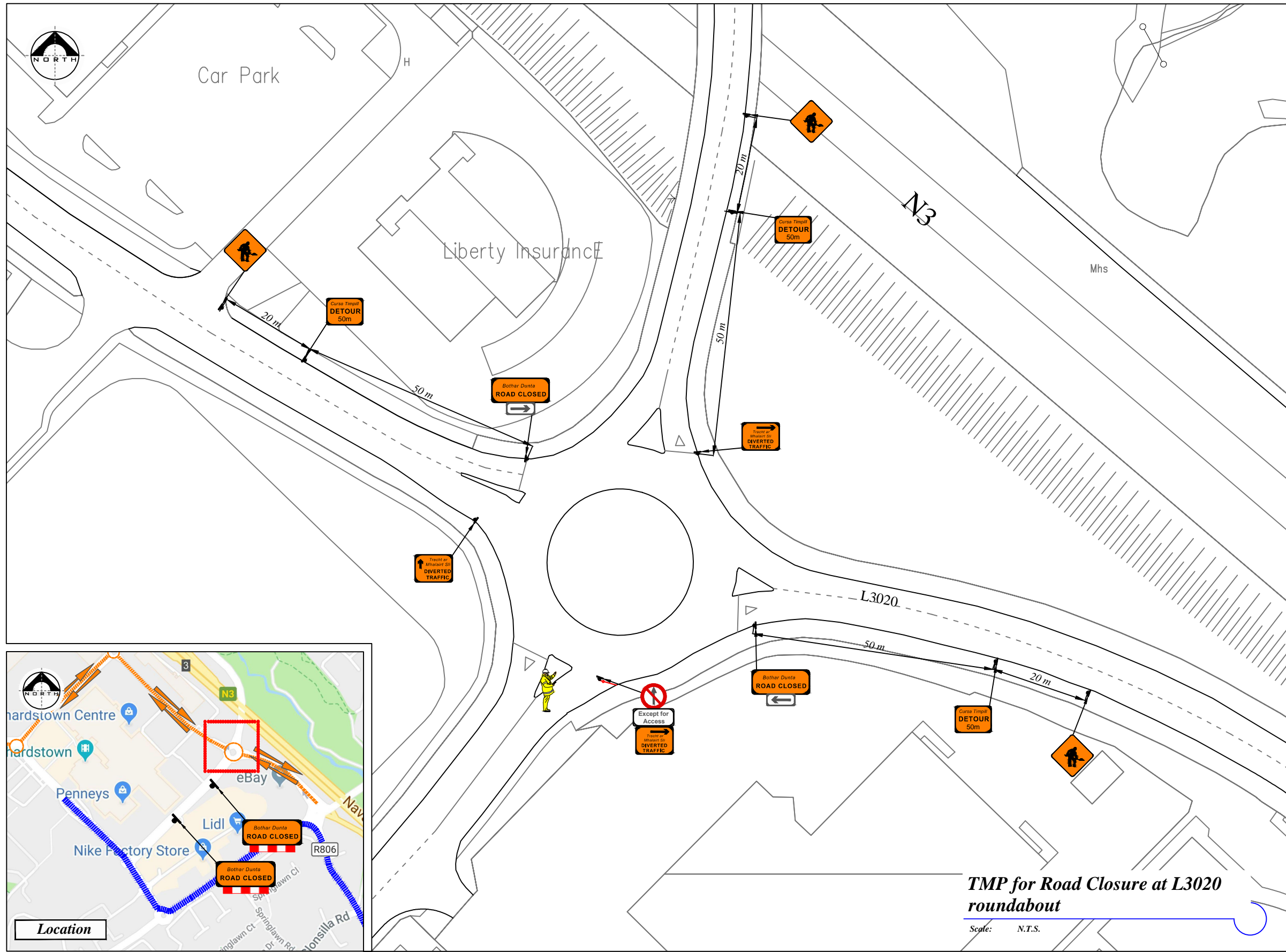
- Note:**
- All signs to comply with Chapter 8 of the "Traffic Signs Manual"-Guidance Document.
 - All Traffic Management to be carried out in accordance with Chapter 8 of the "Traffic Signs Manual".
 - Detailed Risk Assessment to be carried out prior to the installation of Traffic Management System.
 - The Contractor shall be responsible for providing all required ramp access to all changes in road surface level where traffic runs on a temporary surface and also for cycle/pedestrian ramps where footpath, cycle paths or any surface which has a level discontinuity as a result of the works.
 - Exact sign positions to be agreed on site.
 - All safety zones to be maintained at all times.
 - All affected Parties and An Garda Síochana to be notified prior to works commencing.
 - Signs to be positioned so as not to cause an obstruction to other road users.
 - Minimum lane width of 3,25m to be maintained at all times.
 - All signs dimensions to be per Table 8.2.5 and faced with retro-reflective material to class ref 2 of EN 12899.
 - All delineation devices should be designed in accordance with IS EN 13422.
 - All signage shall be per Tables 8.2.1, 8.2.2 and 8.2.4 of the Chapter 8 "Traffic Signs Manual"
 - Safety barrier to be in accordance with IS EN 1317.
 - "End of Roadworks" sign placed 20m to 50m from end of works area.
 - Road Closures to be manned.

TMP for Castleknock rd closure at Navan rd

Scale: N.T.S.



Rev:	Description:	Date:	Job Details:	Drawing:	Dwg no:
			Proposed Traffic Management Plan for Saint Patrick Day Parade at Blanchardstown, Dublin 2024	TMP for Castleknock rd closure at Navan rd	04
			Sheet:	Drawn By:	Rev:
			CAD File ref.:	DM	
				Date:	Scale:
				January 2024	As Shown



TMP for Road Closure at L3020 roundabout

Scale: N.T.S.

LEGEND

- Sign Location
- Traffic Cones
- Approved Barrier
- Event Route
- Diversion Route

Design Parameters:	LV-1	LV-2
1. Statutory Speed of the Road	30	30-60
2. Distance between Advance Signs	25m	25m
3. Number of Advance Signs	2	3
4. Minimum Visibility of Signs	50m	50m
5. Longitudinal Safety Zone	5m	25m
6. Lateral Safety Zone	0.5m	0.5m
7. Leading Taper	45°	45°
8. Maximum at Tapers Cone Space	1m	1m
9. Maximum Longitudinal Cone Space	6m	6m

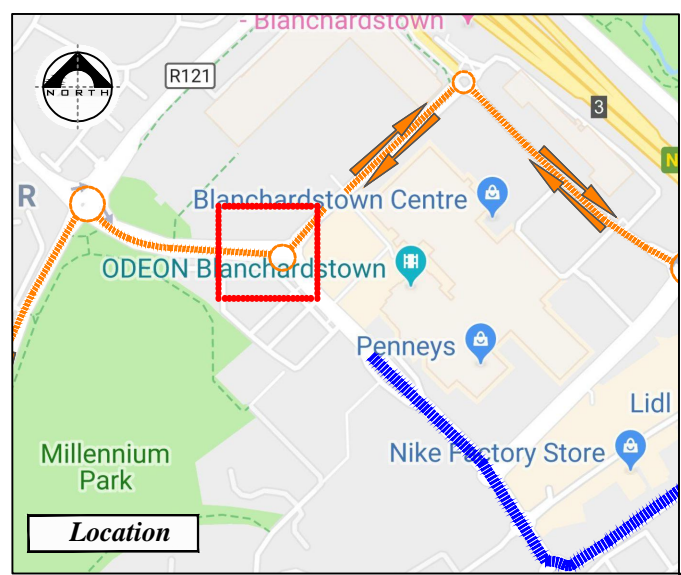
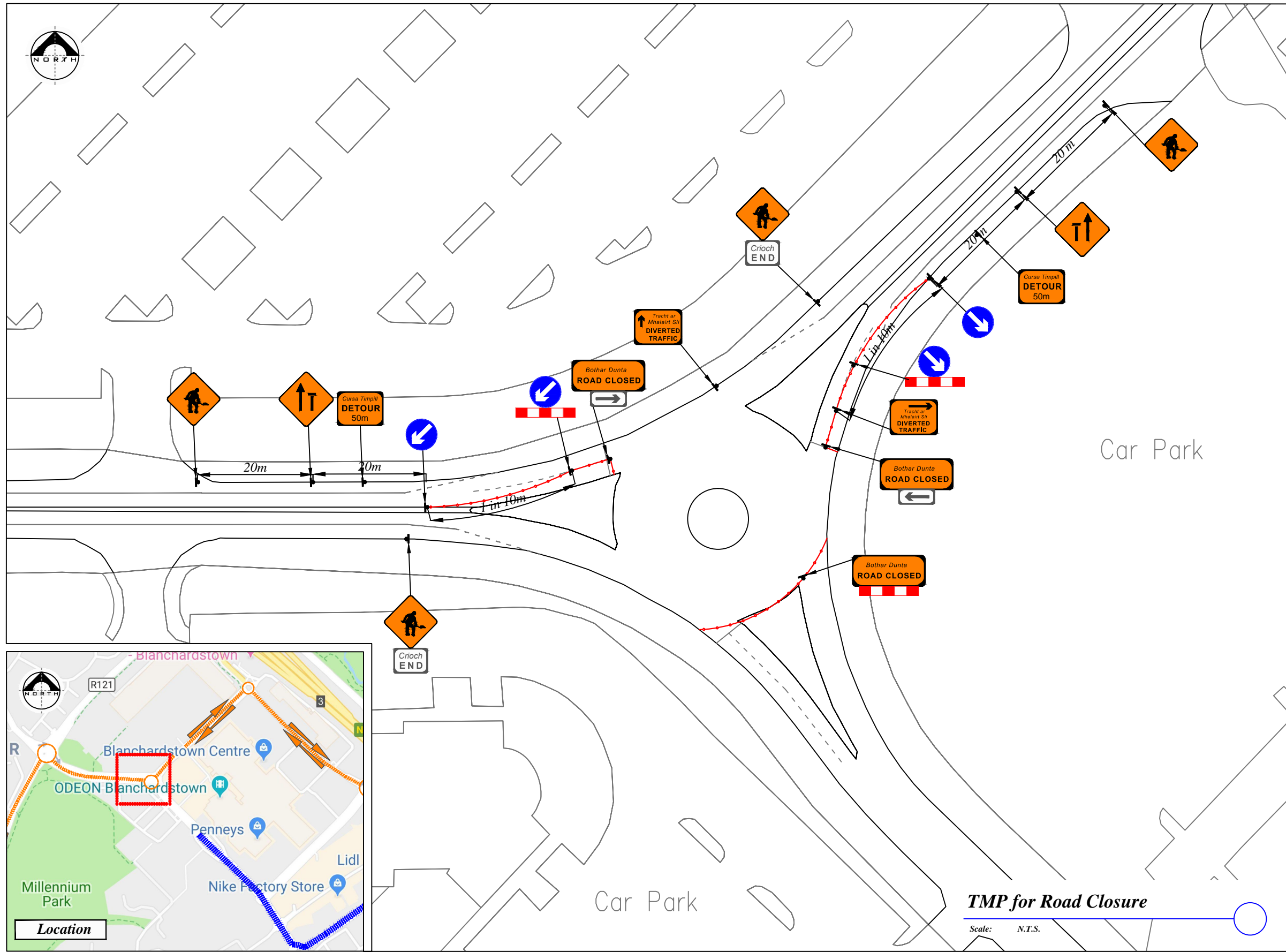
- Note:**
1. All signs to comply with Chapter 8 of the "Traffic Signs Manual"-Guidance Document.
 2. All Traffic Management to be carried out in accordance with Chapter 8 of the "Traffic Signs Manual".
 3. Detailed Risk Assessment to be carried out prior to the installation of Traffic Management System.
 4. The Contractor shall be responsible for providing all required ramp access to all changes in road surface level where traffic runs on a temporary surface and also for cycle/pedestrian ramps where footpath, cycle paths or any surface which has a level discontinuity as a result of the works.
 5. Exact sign positions to be agreed on site.
 6. All safety zones to be maintained at all times.
 7. All affected Parties and An Garda Siochana to be notified prior to works commencing.
 8. Signs to be positioned so as not to cause an obstruction to other road users.
 9. Minimum lane width of 3,25m to be maintained at all times.
 10. All signs dimensions to be per Table 8.2.5 and faced with retro-reflective material to class ref 2 of EN 12899.
 11. All delineation devices should be designed in accordance with IS EN 13422.
 12. All signage shall be per Tables 8.2.1, 8.2.2 and 8.2.4 of the Chapter 8 "Traffic Signs Manual"
 13. Safety barrier to be in accordance with IS EN 1317.
 14. "End of Roadworks" sign placed 20m to 50m from end of works area.
 15. Road Closures to be manned.



Rev:	Description:	Date:

Job Details: Proposed Traffic Management Plan for Saint Patrick Day Parade at Blanchardstown, Dublin 2024	
Sheet:	CAD File ref.:

Drawing: TMP for Road Closure at L3020 roundabout		Dwg no: 05
Rev:		
Drawn By: DM	Date: January 2024	Scale: As Shown



LEGEND

- Sign Location
- Traffic Cones
- Approved Barrier
- Event Route
- Diversion Route

Design Parameters:	LV-1	LV-2
1. Statutory Speed of the Road	30	30-60
2. Distance between Advance Signs	25m	25m
3. Number of Advance Signs	2	3
4. Minimum Visibility of Signs	50m	50m
5. Longitudinal Safety Zone	5m	25m
6. Lateral Safety Zone	0.5m	0.5m
7. Leading Taper	45°	45°
8. Maximum at Tapers Cone Space	1m	1m
9. Maximum Longitudinal Cone Space	6m	6m

- Note:**
1. All signs to comply with Chapter 8 of the "Traffic Signs Manual"-Guidance Document.
 2. All Traffic Management to be carried out in accordance with Chapter 8 of the "Traffic Signs Manual".
 3. Detailed Risk Assessment to be carried out prior to the installation of Traffic Management System.
 4. The Contractor shall be responsible for providing all required ramp access to all changes in road surface level where traffic runs on a temporary surface and also for cycle/pedestrian ramps where footpath, cycle paths or any surface which has a level discontinuity as a result of the works.
 5. Exact sign positions to be agreed on site.
 6. All safety zones to be maintained at all times.
 7. All affected Parties and An Garda Siochana to be notified prior to works commencing.
 8. Signs to be positioned so as not to cause an obstruction to other road users.
 9. Minimum lane width of 3,25m to be maintained at all times.
 10. All signs dimensions to be per Table 8.2.5 and faced with retro-reflective material to class ref 2 of EN 12899.
 11. All delineation devices should be designed in accordance with IS EN 13422.
 12. All signage shall be per Tables 8.2.1, 8.2.2 and 8.2.4 of the Chapter 8 "Traffic Signs Manual"
 13. Safety barrier to be in accordance with IS EN 1317.
 14. "End of Roadworks" sign placed 20m to 50m from end of works area.
 15. Road Closures to be manned.

TMP for Road Closure

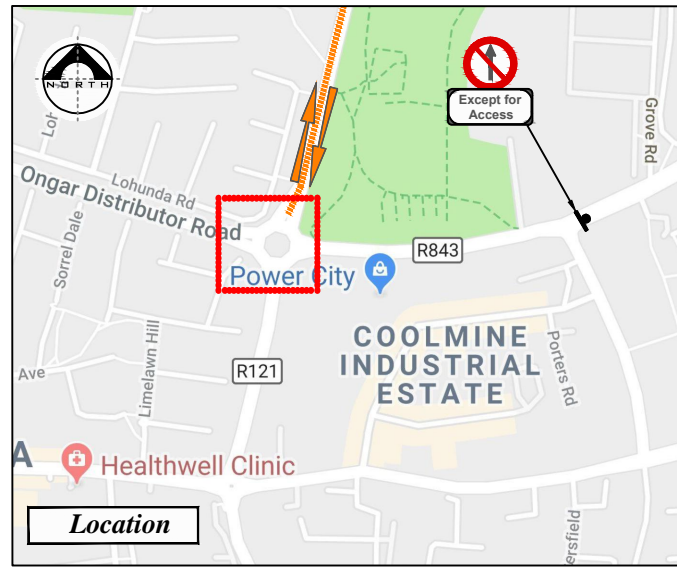
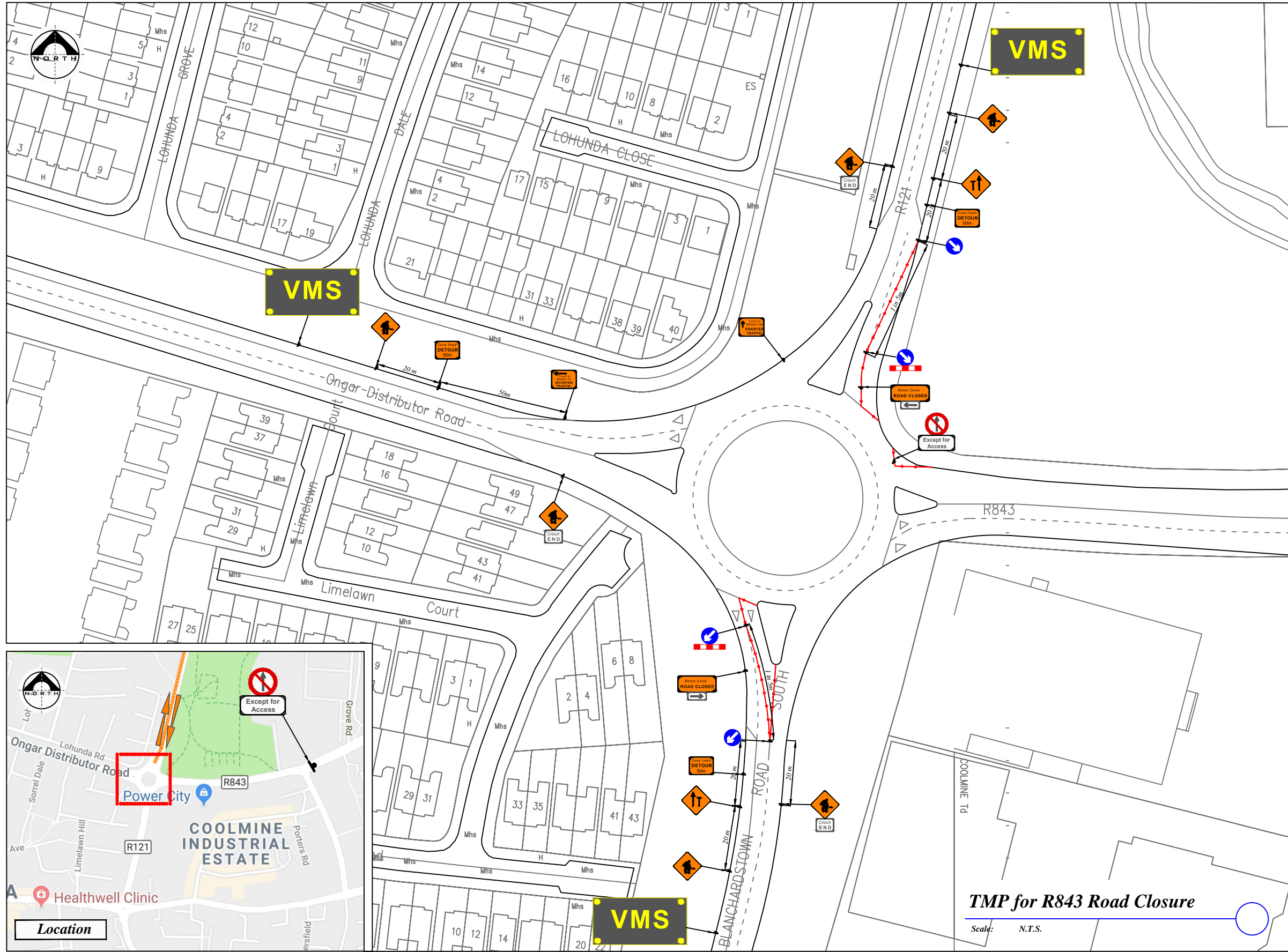
Scale: N.T.S.



Rev:	Description:	Date:

Job Details: Proposed Traffic Management Plan for Saint Patrick Day Parade at Blanchardstown, Dublin 2024	
Sheet:	CAD File ref.:

Drawing: TMP for Road Closure		Dwg no: 06
Rev:		
Drawn By: DM	Date: January 2024	Scale: As Shown



LEGEND

- Sign Location
- Traffic Cones
- Approved Barrier
- Event Route
- Diversion Route

Design Parameters:	LV-1	LV-2
1. Statutory Speed of the Road	30	30-60
2. Distance between Advance Signs	25m	25m
3. Number of Advance Signs	2	3
4. Minimum Visibility of Signs	50m	50m
5. Longitudinal Safety Zone	5m	25m
6. Lateral Safety Zone	0.5m	0.5m
7. Leading Taper	45°	45°
8. Maximum at Tapers Cone Space	1m	1m
9. Maximum Longitudinal Cone Space	6m	6m

- Note:**
1. All signs to comply with Chapter 8 of the "Traffic Signs Manual"-Guidance Document.
 2. All Traffic Management to be carried out in accordance with Chapter 8 of the "Traffic Signs Manual".
 3. Detailed Risk Assessment to be carried out prior to the installation of Traffic Management System.
 4. The Contractor shall be responsible for providing all required ramp access to all changes in road surface level where traffic runs on a temporary surface and also for cycle/pedestrian ramps where footpath, cycle paths or any surface which has a level discontinuity as a result of the works.
 5. Exact sign positions to be agreed on site.
 6. All safety zones to be maintained at all times.
 7. All affected Parties and An Garda Síochána to be notified prior to works commencing.
 8. Signs to be positioned so as not to cause an obstruction to other road users.
 9. Minimum lane width of 3,25m to be maintained at all times.
 10. All signs dimensions to be per Table 8.2.5 and faced with retro-reflective material to class ref 2 of EN 12899.
 11. All delineation devices should be designed in accordance with IS EN 13422.
 12. All signage shall be per Tables 8.2.1, 8.2.2 and 8.2.4 of the Chapter 8 "Traffic Signs Manual"
 13. Safety barrier to be in accordance with IS EN 1317.
 14. "End of Roadworks" sign placed 20m to 50m from end of works area.
 15. Road Closures to be manned.

TMP for R843 Road Closure

Scale: N.T.S.



Rev:	Description:	Date:

Job Details: Proposed Traffic Management Plan for Saint Patrick Day Parade at Blanchardstown, Dublin 2024	
Sheet:	CAD File ref.:

Drawing: TMP for R843 Road Closure		Dwg no: 07
Rev:		
Drawn By: DM	Date: January 2024	Scale: As Shown