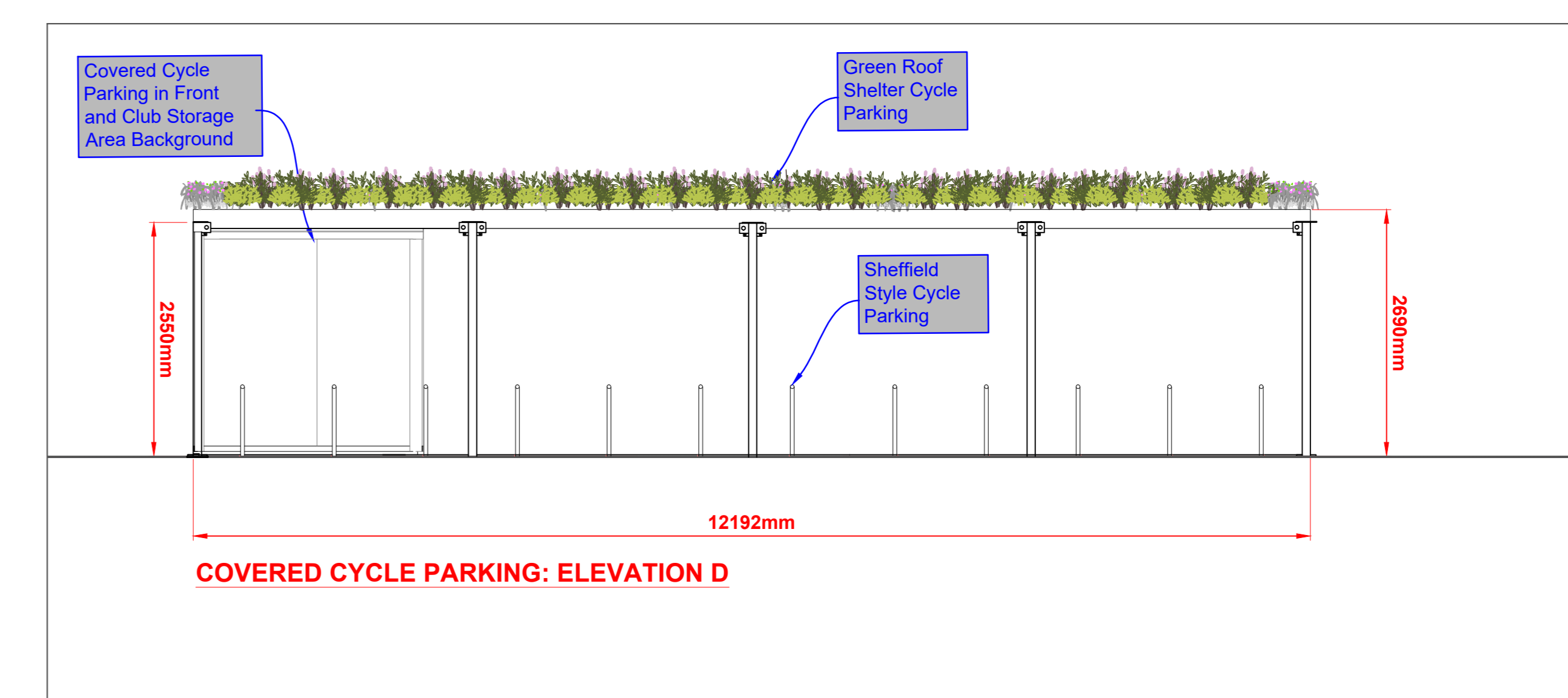
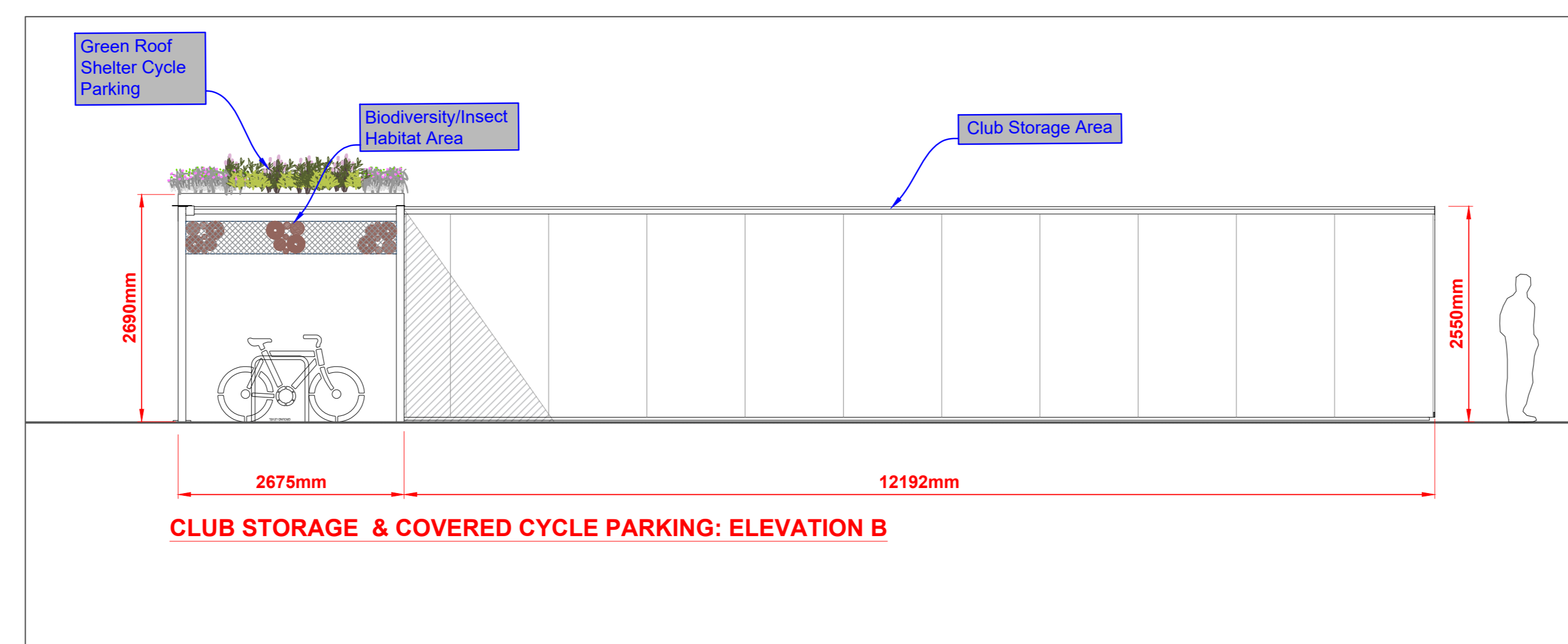
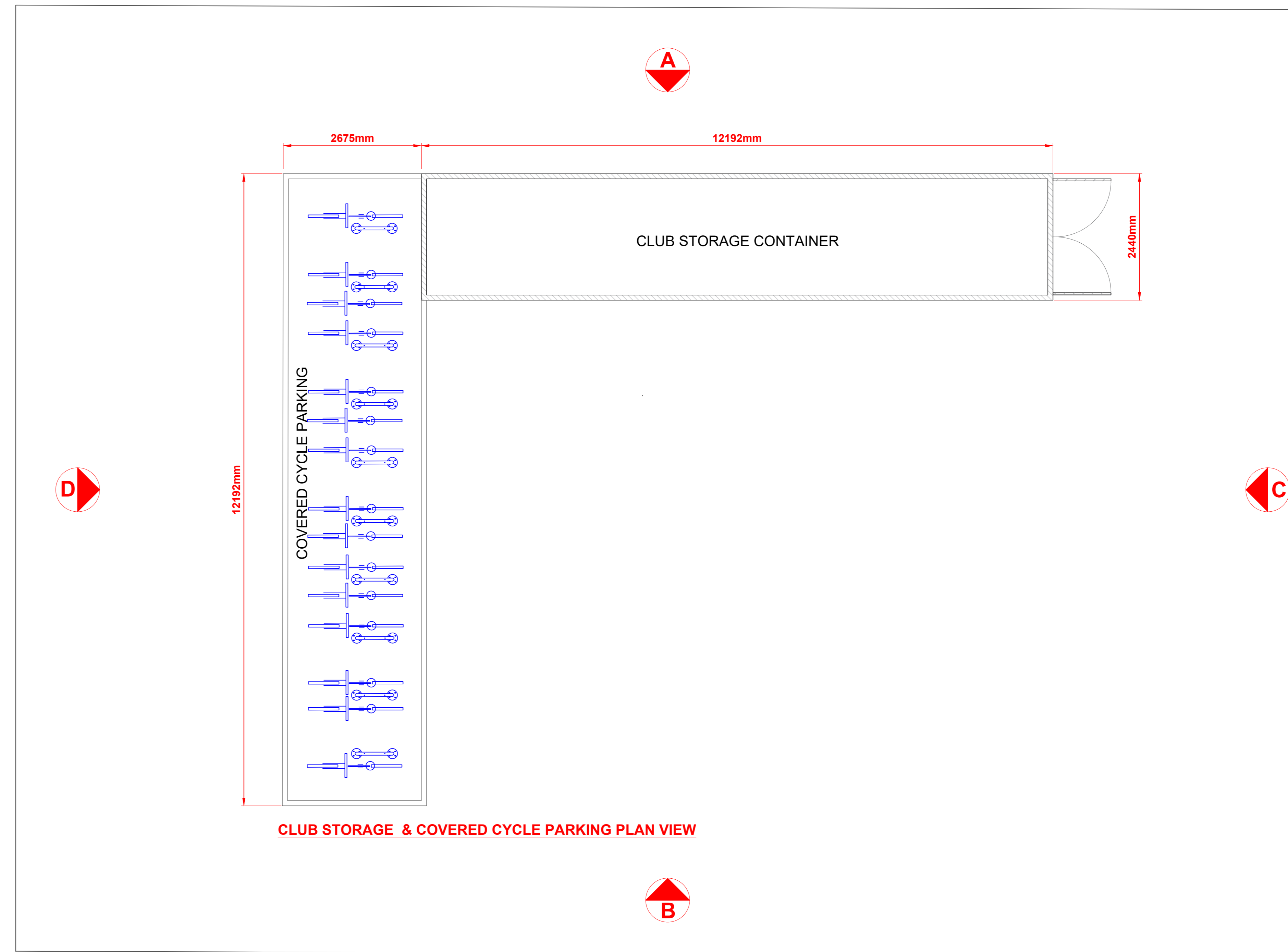
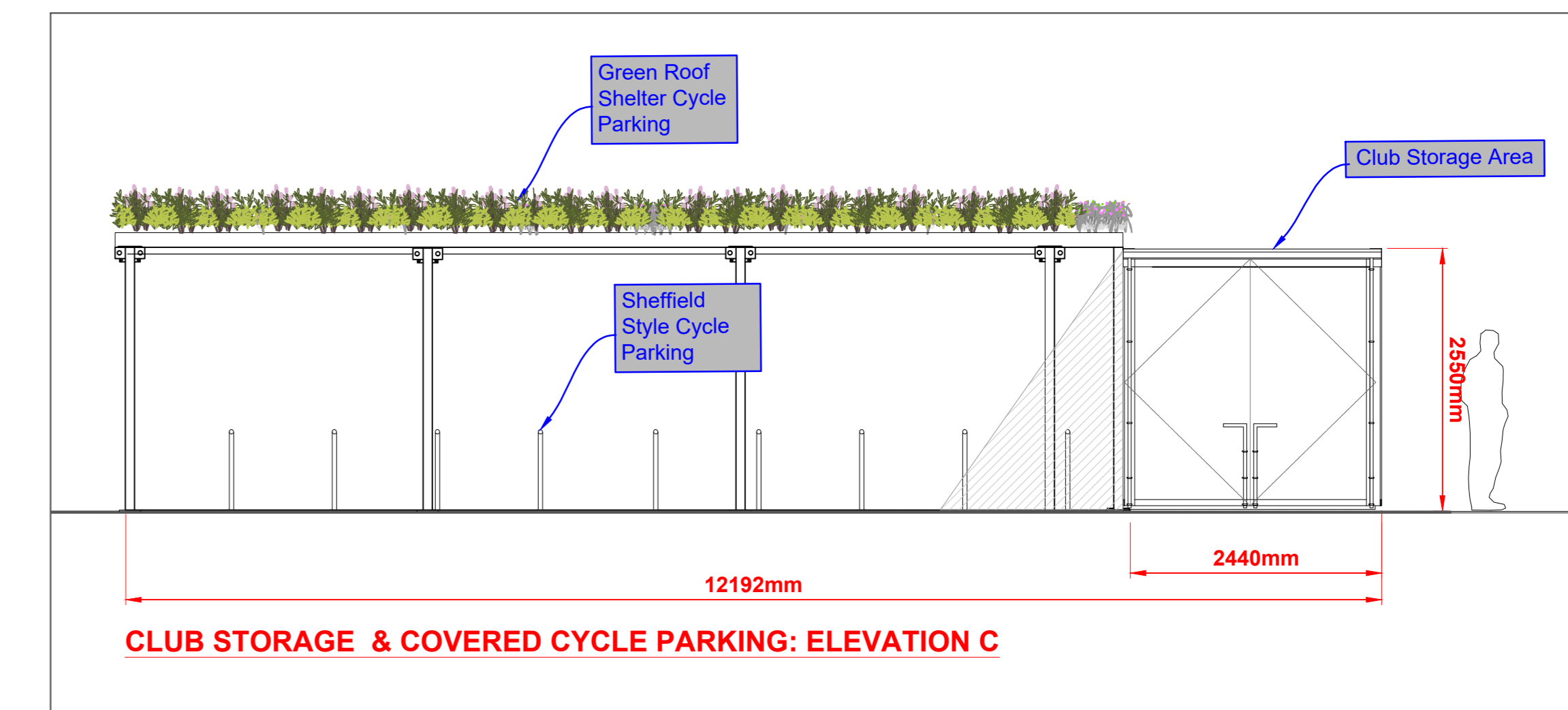
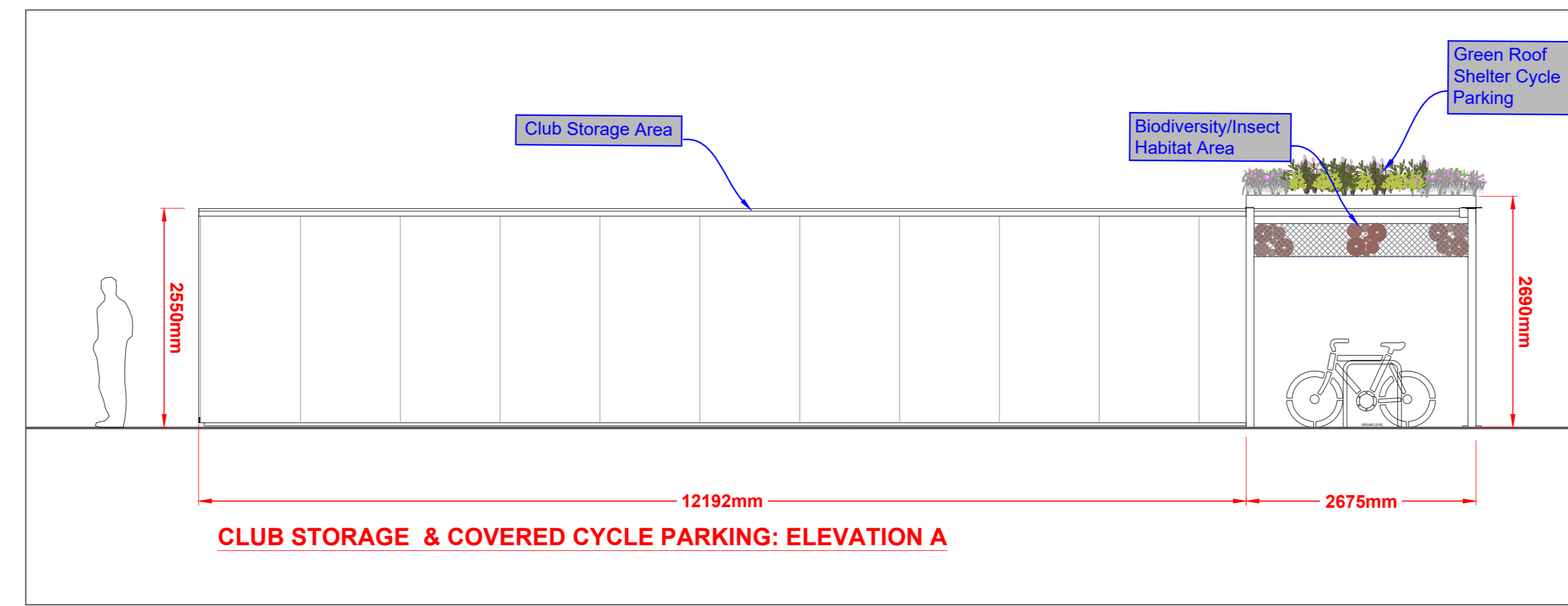


Proposed Corduff Park Redevelopment (Detail Sheet 2 of 3)



Fingal County Council,
Planning & Strategic Infrastructure
Department,
Parks & Green Infrastructure
Division,
County Hall,
Swords.

Matthew McAleese
Director of Services

Kevin J. Halpenny
Senior Parks Superintendent

Index No.: 5613_06
Date: Nov, 2023
Scale 1:50@A0

Comhairle Contae
Fhine Gall
Fingal County
Council

