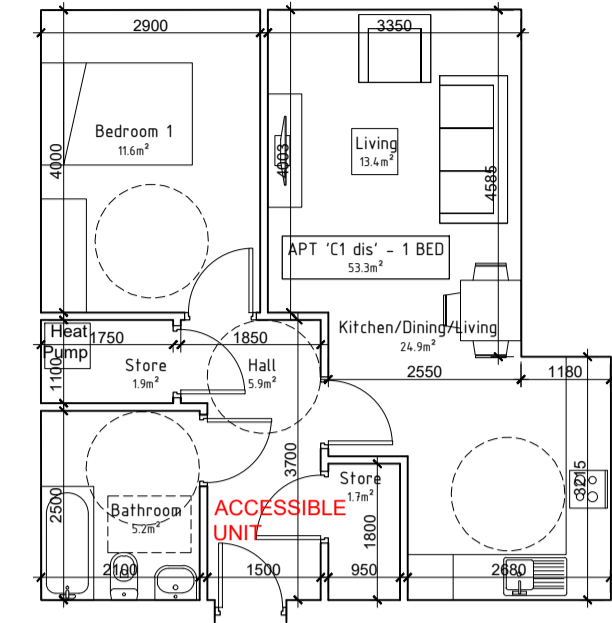


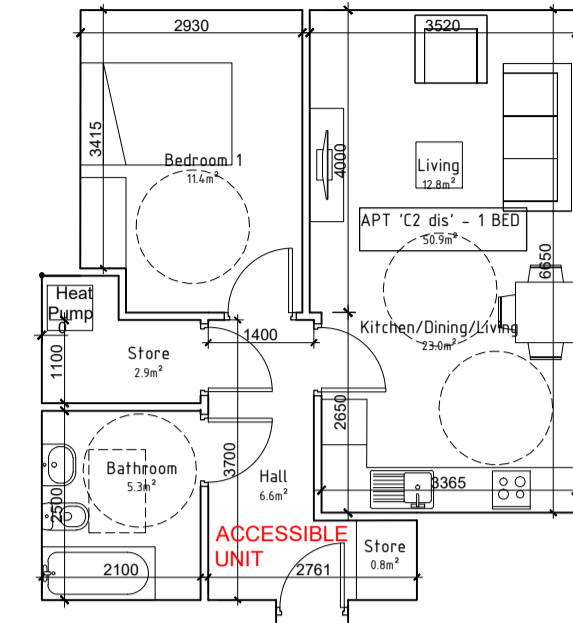
1-Bed/2P Apt. Type C1
Designated Accessible Unit



APARTMENT TYPE 'C1' :
1 Bedroom, 2 Person
Designated Accessible Unit

	Proposed [m ²]	Target [m ²]
Gross Floor Area	53.3 (118%)	45.0
Living Room	13.4	11.0
Kitchen & Dining	11.5	6.5 (min kitchen area)
Aggregate Living	24.9	23.0
Bedroom 1	11.6	11.4
Aggregate Bedrooms	11.6	11.4
Storage	3.6	3.0

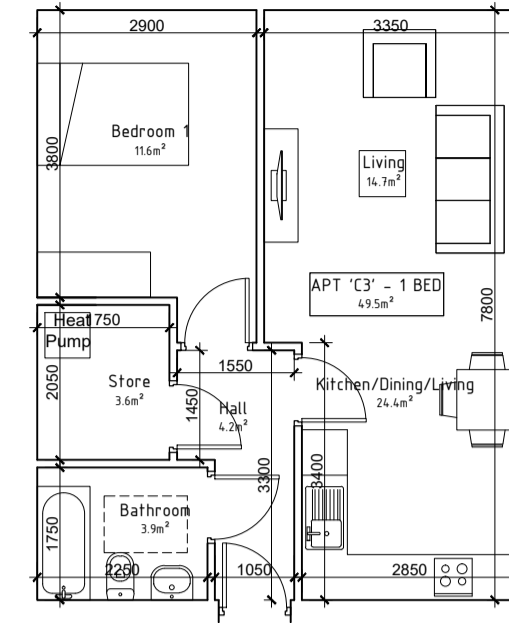
1-Bed/2P Apt. Type C2
Designated Accessible Unit



APARTMENT TYPE 'C2' :
1 Bedroom, 2 Person
Designated Accessible Unit

	Proposed [m ²]	Target [m ²]
Gross Floor Area	50.9 (113%)	45.0
Living Room	12.8	11.0
Kitchen & Dining	10.2	6.5 (min kitchen area)
Aggregate Living	23.0	23.0
Bedroom 1	11.4	11.4
Aggregate Bedrooms	11.4	11.4
Storage	3.7	3.0

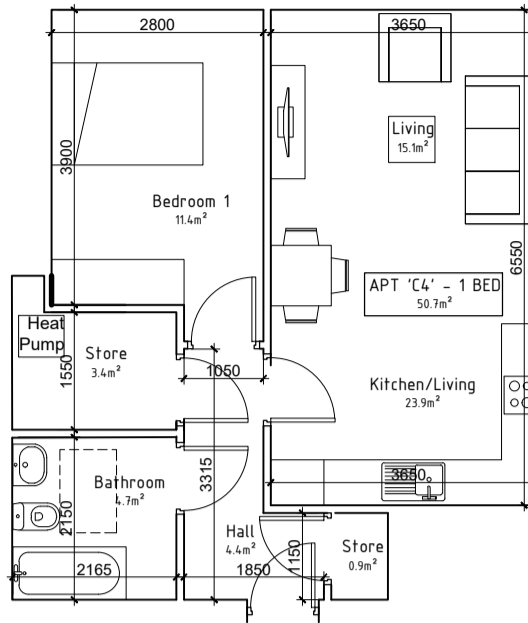
1-Bed/2P Apt. Type C3



APARTMENT TYPE 'C3' :
1 Bedroom, 2 Person

	Proposed [m ²]	Target [m ²]
Gross Floor Area	49.5 (110%)	45.0
Living Room	14.7	11.0
Kitchen & Dining	9.7	6.5 (min kitchen area)
Aggregate Living	24.4	23.0
Bedroom 1	11.6	11.4
Aggregate Bedrooms	11.6	11.4
Storage	3.6	3.0

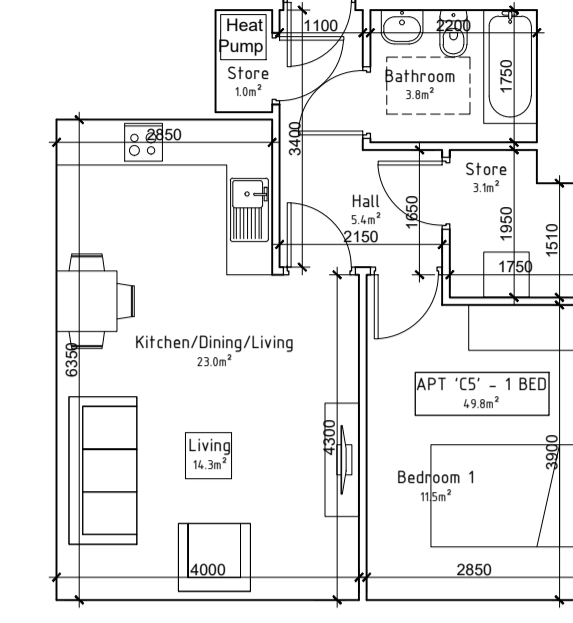
1-Bed/2P Apt. Type C4



APARTMENT TYPE 'C4' :
1 Bedroom, 2 Person

	Proposed [m ²]	Target [m ²]
Gross Floor Area	50.7 (113%)	45.0
Living Room	15.1	11.0
Kitchen & Dining	8.8	6.5 (min kitchen area)
Aggregate Living	23.9	23.0
Bedroom 1	11.4	11.4
Aggregate Bedrooms	11.4	11.4
Storage	4.3	3.0

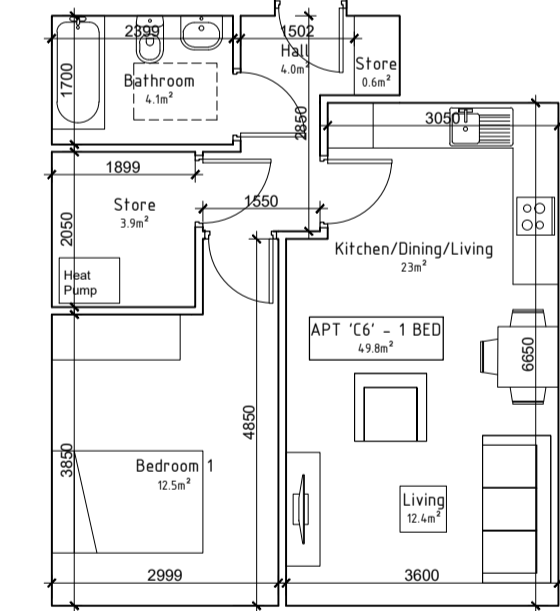
1-Bed/2P Apt. Type C5



APARTMENT TYPE 'C5' :
1 Bedroom, 2 Person,

	Proposed [m ²]	Target [m ²]
Gross Floor Area	49.8 (110%)	45.0
Living Room	14.3	11.0
Kitchen & Dining	8.7	6.5 (min kitchen area)
Aggregate Living	23.0	23.0
Bedroom 1	11.5	11.4
Aggregate Bedrooms	11.5	11.4
Storage	4.1	3.0

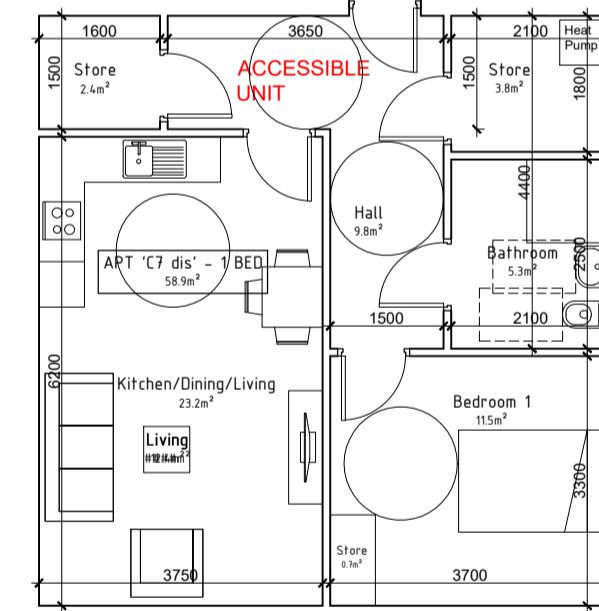
1-Bed/2P Apt. Type C6



APARTMENT TYPE 'C6' :
1 Bedroom, 2 Person

	Proposed [m ²]	Target [m ²]
Gross Floor Area	49.8 (111%)	45.0
Living Room	12.4	11.0
Kitchen & Dining	10.6	6.5 (min kitchen area)
Aggregate Living	23.0	23.0
Bedroom 1	12.5	11.4
Aggregate Bedrooms	12.5	11.4
Storage	4.5	3.0

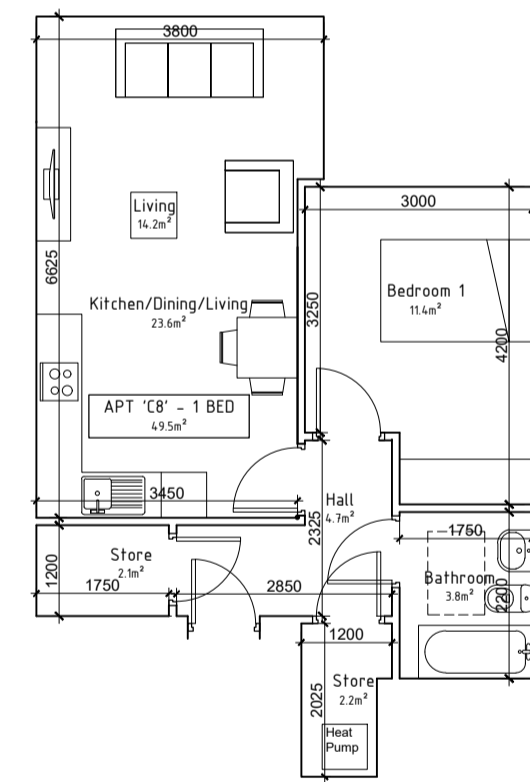
1-Bed/2P Apt. Type C7
Designated Accessible Unit



APARTMENT TYPE 'C7 dis' :
1 Bedroom, 2 Person
Designated Accessible Unit

	Proposed [m ²]	Target [m ²]
Gross Floor Area	58.9 (131%)	45.0
Living Room	12.4	11.0
Kitchen & Dining	10.8	6.5 (min kitchen area)
Aggregate Living	23.2	23.0
Bedroom 1	11.5	11.4
Aggregate Bedrooms	11.5	11.4
Storage	6.9	3.0

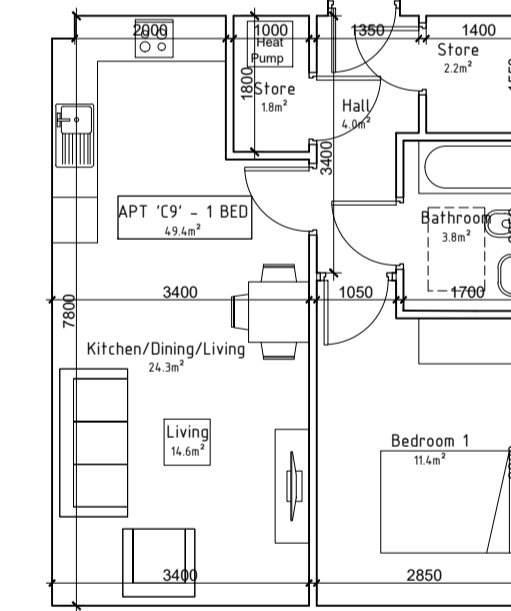
1-Bed/2P Apt. Type C8



APARTMENT TYPE 'C8' :
1 Bedroom, 2 Person

	Proposed [m ²]	Target [m ²]
Gross Floor Area	49.5 (110%)	45.0
Living Room	14.2	11.0
Kitchen & Dining	9.4	6.5 (min kitchen area)
Aggregate Living	23.6	23.0
Bedroom 1	11.4	11.4
Aggregate Bedrooms	11.4	11.4
Storage	4.3	3.0

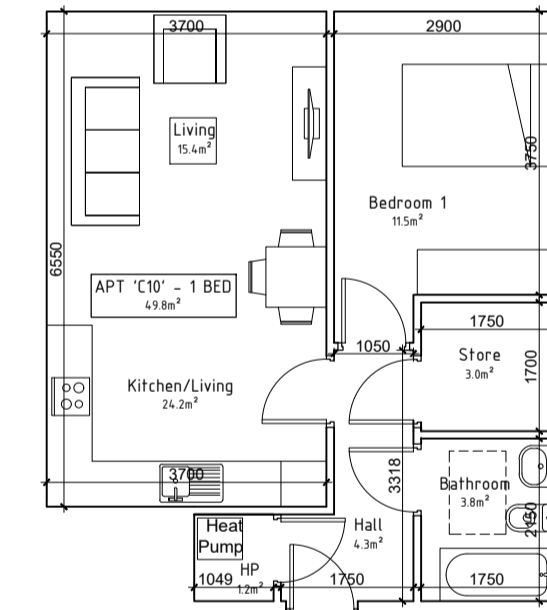
1-Bed/2P Apt. Type C9



APARTMENT TYPE 'C9' :
1 Bedroom, 2 Person

	Proposed [m ²]	Target [m ²]
Gross Floor Area	49.4 (110%)	45.0
Living Room	14.6	11.0
Kitchen & Dining	9.7	6.5 (min kitchen area)
Aggregate Living	24.3	23.0
Bedroom 1	11.4	11.4
Aggregate Bedrooms	11.4	11.4
Storage	4.0	3.0

1-Bed/2P Apt. Type C10



APARTMENT TYPE 'C10' :
1 Bedroom, 2 Person

	Proposed [m ²]	Target [m ²]
Gross Floor Area	49.8 (111%)	45.0
Living Room	15.4	11.0
Kitchen & Dining	8.8	6.5 (min kitchen area)
Aggregate Living	24.2	23.0
Bedroom 1	11.5	11.4
Aggregate Bedrooms	11.5	11.4
Storage	4.2	3.0

REVISIONS AFTER LAST PLOT: 		PROJECT: CHURCH FIELDS EAST DATE: 26/05/2023 DRAWN: RN K:\IDR\20009\IP	SCALE: 1:100@A1 JOB NO. 20009 DWG. NO. P-062
		DRAWING: PROPOSED APARTMENTS TYPES PLANS (SHEET 3) STAGE: PLANNING	Revision:
		Merchants House, 27-30 Merchants Quay, Dublin 8. Tel: (01) 633 4261. Fax (01) 633 4265 Email: info@walshassociates.ie	
		Copyright © 2003 Walsh Associates All Rights Reserved.	
		* FOUNDED 1989 *	