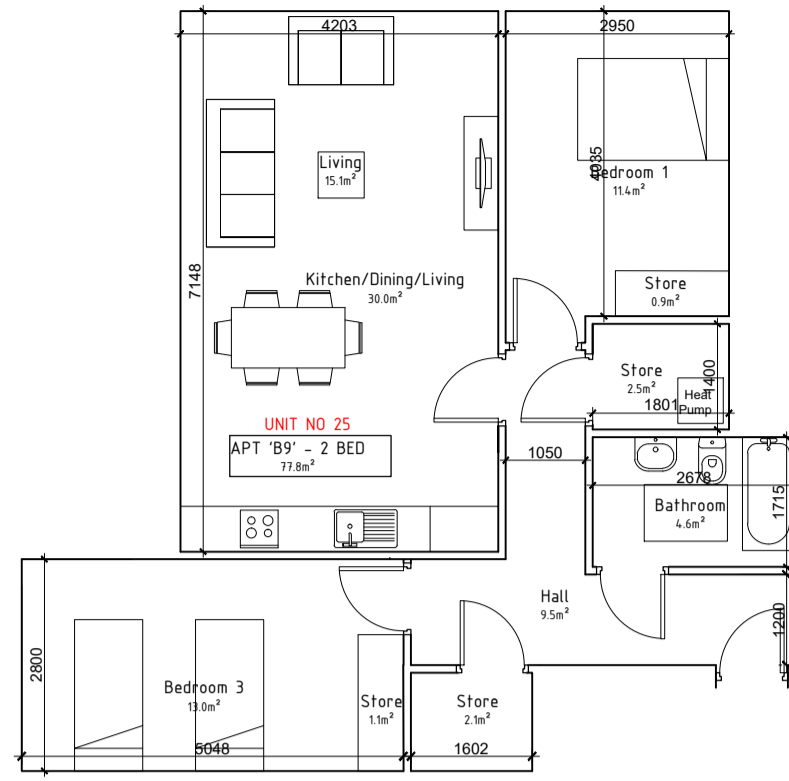


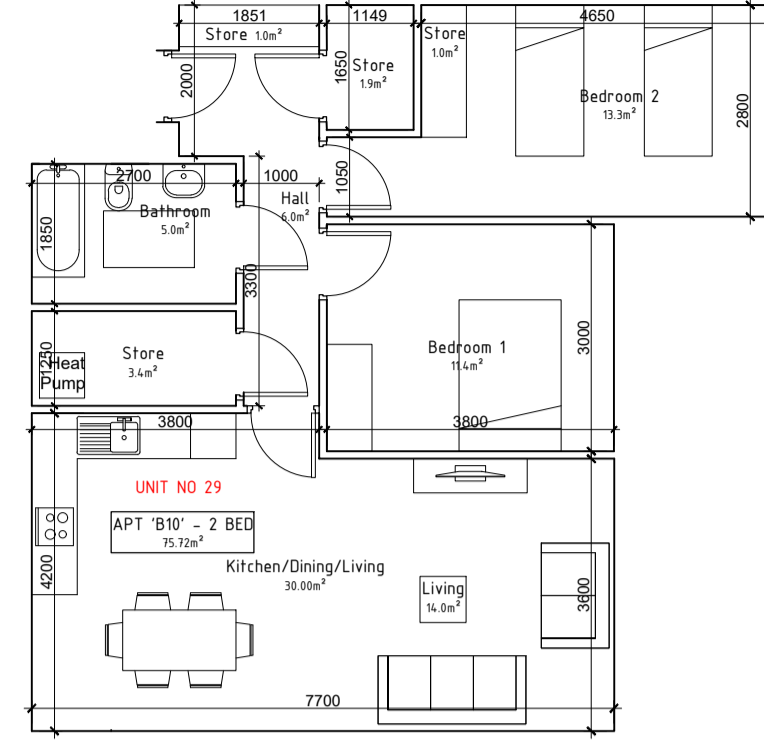
2-Bed/4P Apt. Type B9



APARTMENT TYPE 'B9':
2 Bedroom, 4 Person

| | Proposed [m ²] | Target [m ²] |
|--------------------|----------------------------|--------------------------|
| Gross Floor Area | 76.8 (105%) | 73.0 |
| Living Room | 15.6 | 13.0 |
| Kitchen & Dining | 14.9 | 6.5 (min kitchen area) |
| Aggregate Living | 30.5 | 30.0 |
| Bedroom 1 | 11.5 | 11.4 |
| Bedroom 2 | 15.0 | 13.0 |
| Aggregate Bedrooms | 26.5 | 24.4 |
| Storage | 6.0 | 6.0 |

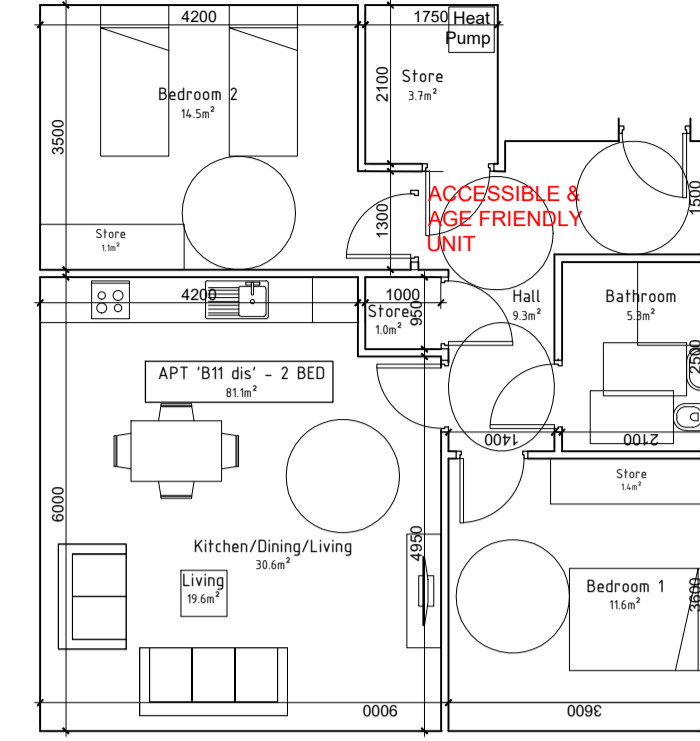
2-Bed/4P Apt. Type B10



APARTMENT TYPE 'B10':
2 Bedroom, 4 Person

| | Proposed [m ²] | Target [m ²] |
|--------------------|----------------------------|--------------------------|
| Gross Floor Area | 75.7 (104%) | 73.0 |
| Living Room | 14.0 | 13.0 |
| Kitchen & Dining | 16.0 | 6.5 (min kitchen area) |
| Aggregate Living | 30.0 | 30.0 |
| Bedroom 1 | 11.4 | 11.4 |
| Bedroom 2 | 13.3 | 13.0 |
| Aggregate Bedrooms | 24.7 | 24.4 |
| Storage | 7.3 | 6.0 |

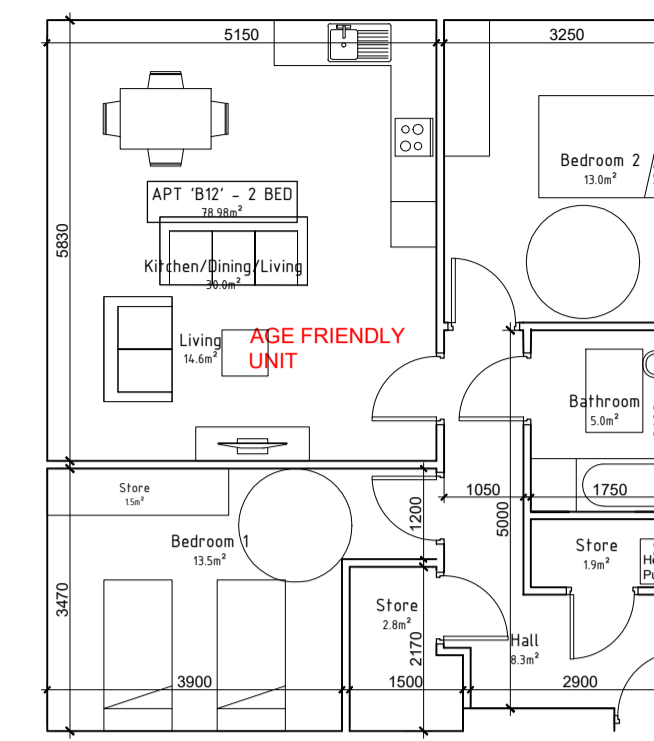
2-Bed/4P Apt. Type B11
Designated Accessible & Age Friendly Unit



APARTMENT TYPE 'B11 dis':
2 Bedroom, 4 Person
Designated Age Friendly / Accessible Unit

| | Proposed [m ²] | Target [m ²] |
|--------------------|----------------------------|--------------------------|
| Gross Floor Area | 81.1 (111%) | 73.0 |
| Living Room | 19.6 | 13.0 |
| Kitchen & Dining | 10.5 | 6.5 (min kitchen area) |
| Aggregate Living | 30.1 | 30.0 |
| Bedroom 1 | 11.6 | 11.4 |
| Bedroom 2 | 14.5 | 13.0 |
| Aggregate Bedrooms | 26.1 | 24.4 |
| Storage | 7.2 | 6.0 |

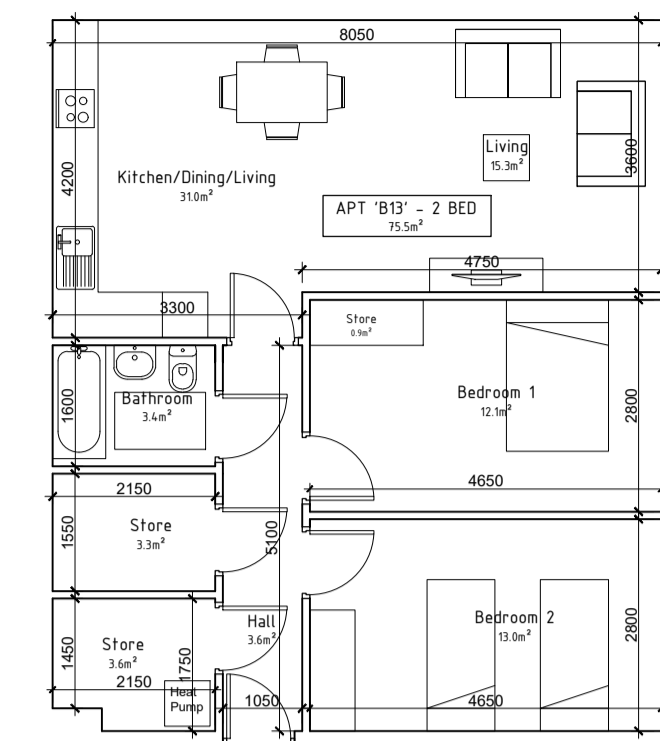
2-Bed/4P Apt. Type B12
Age Friendly Unit



APARTMENT TYPE 'B12':
2 Bedroom, 4 Person

| | Proposed [m ²] | Target [m ²] |
|--------------------|----------------------------|--------------------------|
| Gross Floor Area | 79.0 (108%) | 73.0 |
| Living Room | 14.6 | 13.0 |
| Kitchen & Dining | 15.4 | 6.5 (min kitchen area) |
| Aggregate Living | 30.0 | 30.0 |
| Bedroom 1 | 13.5 | 11.4 |
| Bedroom 2 | 13.0 | 13.0 |
| Aggregate Bedrooms | 26.5 | 24.4 |
| Storage | 6.2 | 6.0 |

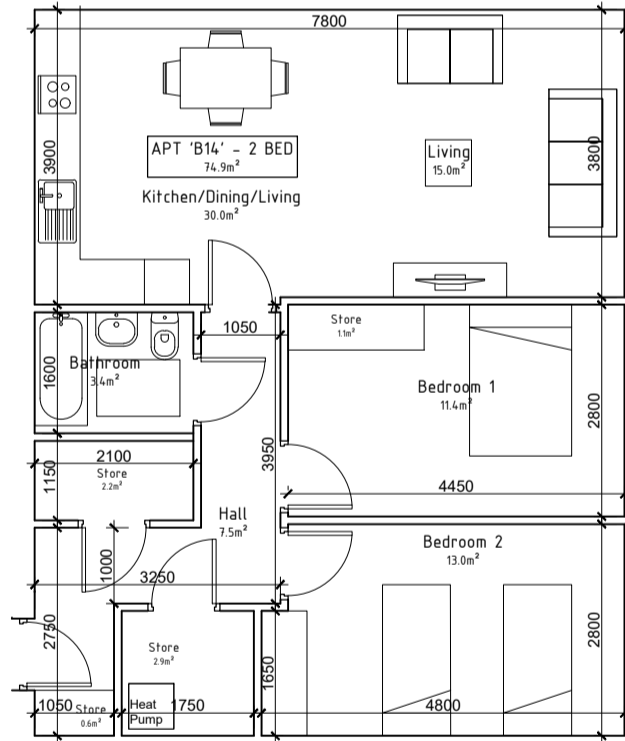
2-Bed/4P Apt. Type B13



APARTMENT TYPE 'B13':
2 Bedroom, 4 Person

| | Proposed [m ²] | Target [m ²] |
|--------------------|----------------------------|--------------------------|
| Gross Floor Area | 75.5 (103%) | 73.0 |
| Living Room | 15.3 | 13.0 |
| Kitchen & Dining | 15.7 | 6.5 (min kitchen area) |
| Aggregate Living | 31.0 | 30.0 |
| Bedroom 1 | 12.1 | 11.4 |
| Bedroom 2 | 13.0 | 13.0 |
| Aggregate Bedrooms | 25.1 | 24.4 |
| Storage | 7.8 | 6.0 |

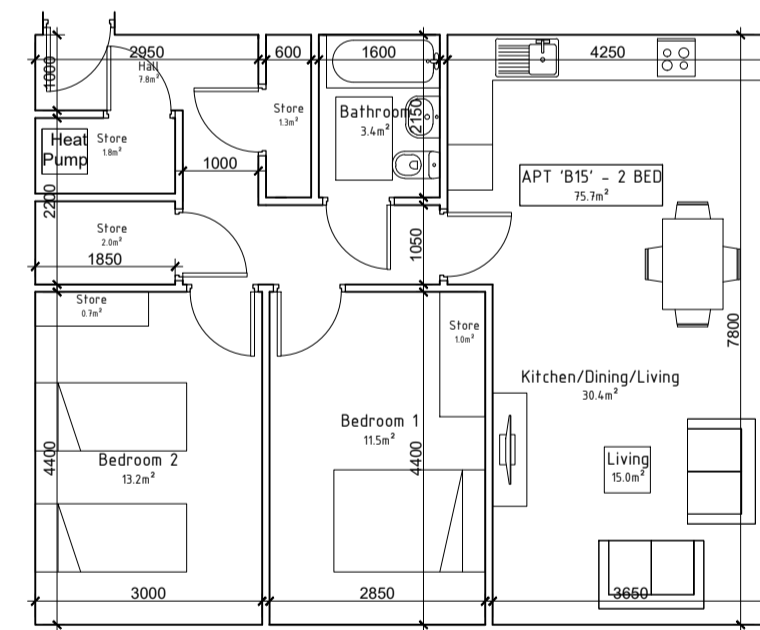
2-Bed/4P Apt. Type B14



APARTMENT TYPE 'B14':
2 Bedroom, 4 Person

| | Proposed [m ²] | Target [m ²] |
|--------------------|----------------------------|--------------------------|
| Gross Floor Area | 74.9 (103%) | 73.0 |
| Living Room | 15.0 | 13.0 |
| Kitchen & Dining | 15.0 | 6.5 (min kitchen area) |
| Aggregate Living | 30.0 | 30.0 |
| Bedroom 1 | 11.4 | 11.4 |
| Bedroom 2 | 13.0 | 13.0 |
| Aggregate Bedrooms | 24.4 | 24.4 |
| Storage | 6.8 | 6.0 |

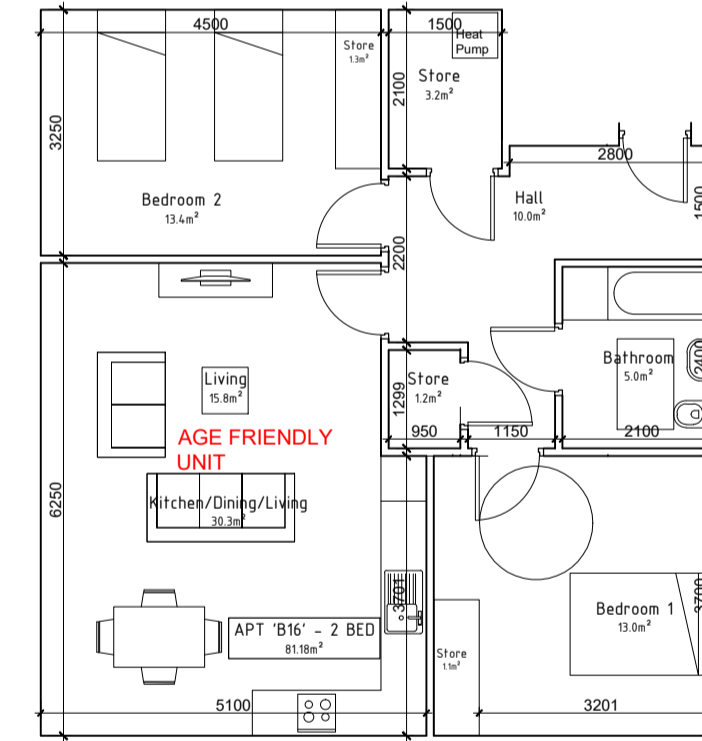
2-Bed/4P Apt. Type B15



APARTMENT TYPE 'B15':
2 Bedroom, 4 Person

| | Proposed [m ²] | Target [m ²] |
|--------------------|----------------------------|--------------------------|
| Gross Floor Area | 75.7 (104%) | 73.0 |
| Living Room | 15.0 | 13.0 |
| Kitchen & Dining | 15.4 | 6.5 (min kitchen area) |
| Aggregate Living | 30.4 | 30.0 |
| Bedroom 1 | 11.5 | 11.4 |
| Bedroom 2 | 13.2 | 13.0 |
| Aggregate Bedrooms | 24.7 | 24.4 |
| Storage | 6.8 | 6.0 |

2-Bed/4P Apt. Type B16
Age Friendly Unit

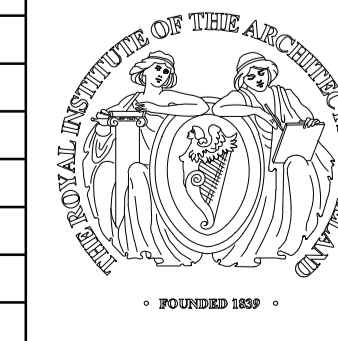


APARTMENT TYPE 'B16':
2 Bedroom, 4 Person
Designated Age Friendly / Accessible Unit

| | Proposed [m ²] | Target [m ²] |
|--------------------|----------------------------|--------------------------|
| Gross Floor Area | 81.2 (111%) | 73.0 |
| Living Room | 15.8 | 13.0 |
| Kitchen & Dining | 14.5 | 6.5 (min kitchen area) |
| Aggregate Living | 30.3 | 30.0 |
| Bedroom 1 | 13.0 | 11.4 |
| Bedroom 2 | 13.4 | 13.0 |
| Aggregate Bedrooms | 26.4 | 24.4 |
| Storage | 6.8 | 6.0 |

REVISIONS AFTER LAST PLOT:

| NO. | DESCRIPTION |
|-----|-------------|
| | |
| | |
| | |
| | |
| | |



| | | | | | |
|---|---|--|------------|-----------|----------|
| PROJECT: | CHURCH FIELDS EAST | DATE: | 26/05/2023 | SCALE: | 1:100@A1 |
| DRAWN: | RN | JOB NO.: | 20009 | DWG. NO.: | P-061 |
| DRAWING: | PROPOSED APARTMENTS TYPES PLANS (SHEET 2) | Stage: | PLANNING | Revision: | |
| ARCHITECTS & PROJECT MANAGERS Copyright © 2003 Walsh Associates All Rights Reserved. | | Merchants House, 27-30 Merchants Quay, Dublin 8. Tel: (01) 633 4261. Fax (01) 633 4265 Email: info@walshassociates.ie | | | |