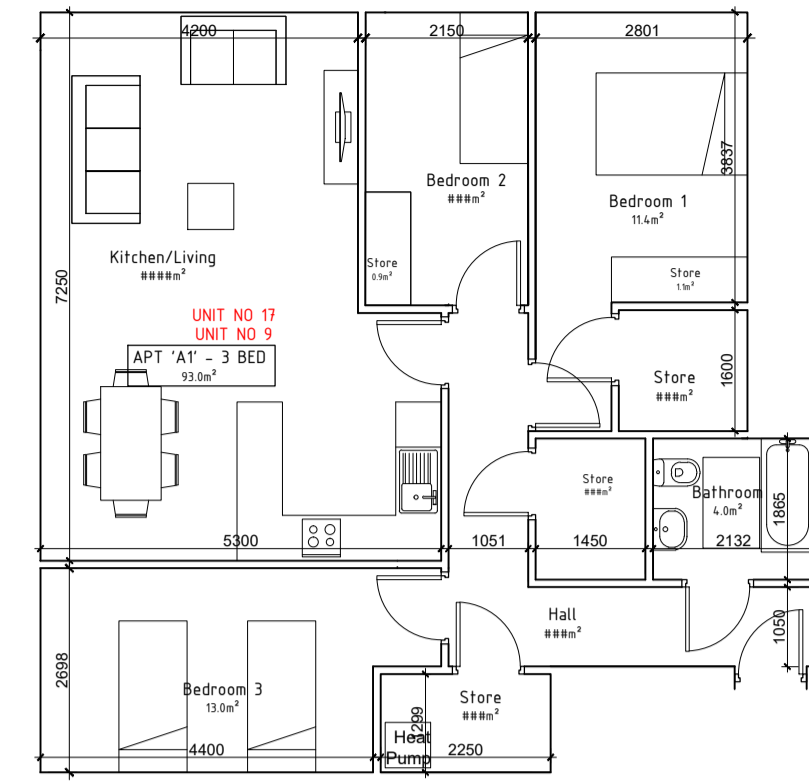


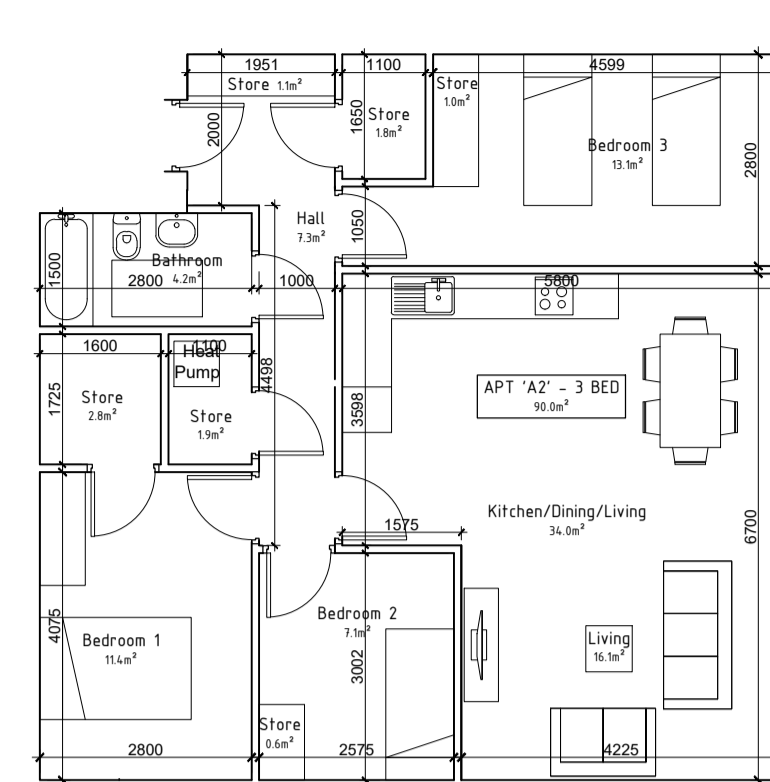
3-Bed/5P Apt. Type A1



APARTMENT TYPE 'A1':
3 Bedroom, 5 Person

	Proposed [m ²]	Target [m ²]
Gross Floor Area	93.0 (103%)	90.0
Living Room	16.7	13.0
Kitchen & Dining	17.3	6.5 (min kitchen area)
Aggregate Living	34.0	34.0
Bedroom 1	11.4	11.4
Bedroom 2	7.4	7.1
Bedroom 3	13.0	13.0
Aggregate Bedrooms	31.8	31.5
Storage	10.3	9.0

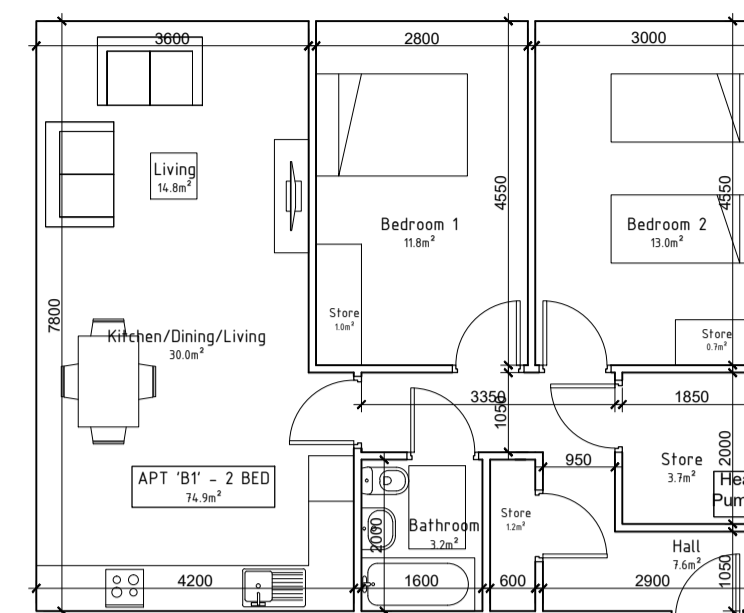
3-Bed/5P Apt. Type A2



APARTMENT TYPE 'A2':
3 Bedroom, 5 Person

	Proposed [m ²]	Target [m ²]
Gross Floor Area	90.0 (100%)	90.0
Living Room	16.1	13.0
Kitchen & Dining	17.9	6.5 (min kitchen area)
Aggregate Living	34.0	34.0
Bedroom 1	11.4	11.4
Bedroom 2	7.1	7.1
Bedroom 3	13.1	13.0
Aggregate Bedrooms	31.6	31.5
Storage	9.2	9.0

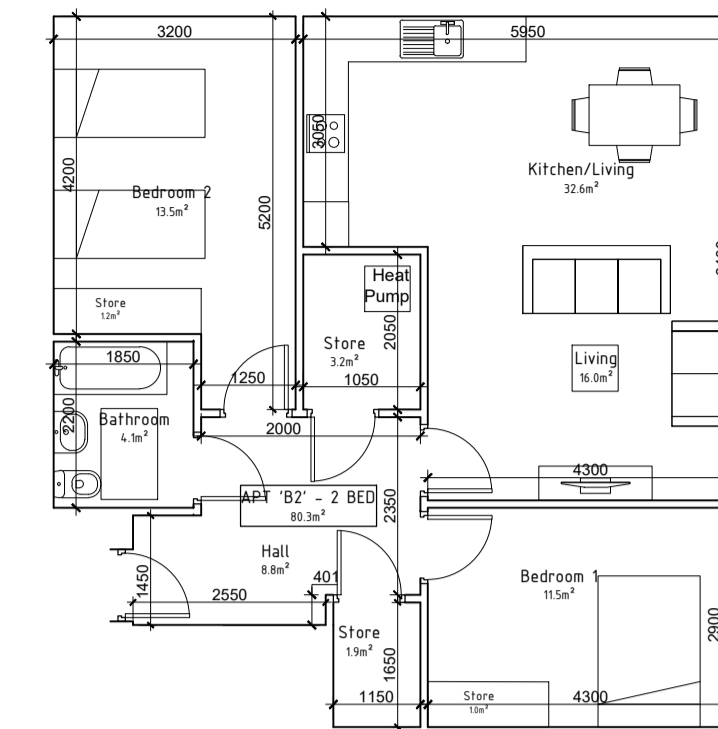
2-Bed/4P Apt. Type B1



APARTMENT TYPE 'B1':
2 Bedroom, 4 Person,

	Proposed [m ²]	Target [m ²]
Gross Floor Area	74.9 (103%)	73.0
Living Room	14.8	13.0
Kitchen & Dining	15.2	6.5 (min kitchen area)
Aggregate Living	30.0	30.0
Bedroom 1	11.8	11.4
Bedroom 2	13.0	13.0
Aggregate Bedrooms	24.8	24.4
Storage	6.6	6.0

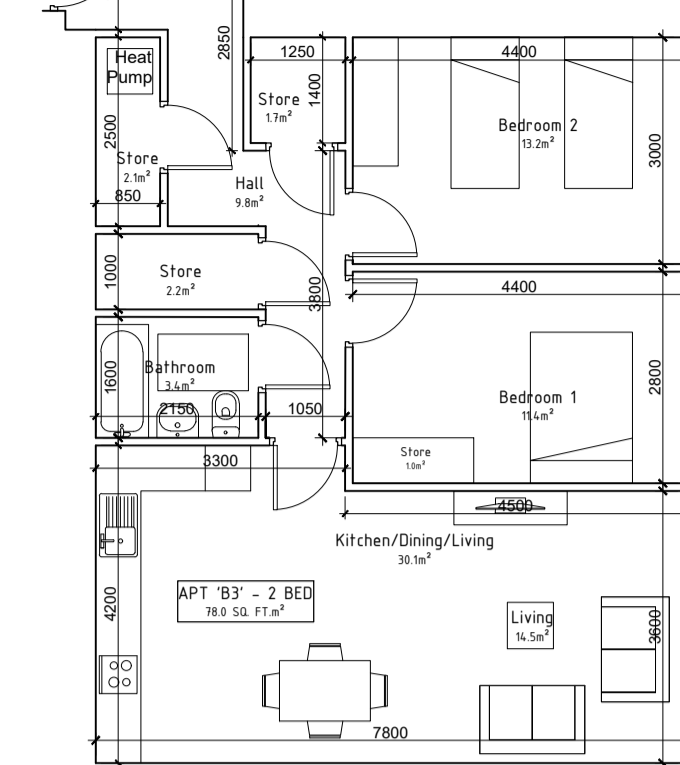
2-Bed/4P Apt. Type B2



APARTMENT TYPE 'B2':
2 Bedroom, 4 Person,

	Proposed [m ²]	Target [m ²]
Gross Floor Area	80.3 (110%)	73.0
Living Room	16	13.0
Kitchen & Dining	16.6	6.5 (min kitchen area)
Aggregate Living	32.6	30.0
Bedroom 1	11.5	11.4
Bedroom 2	13.5	13.0
Aggregate Bedrooms	25.0	24.4
Storage	7.3	6.0

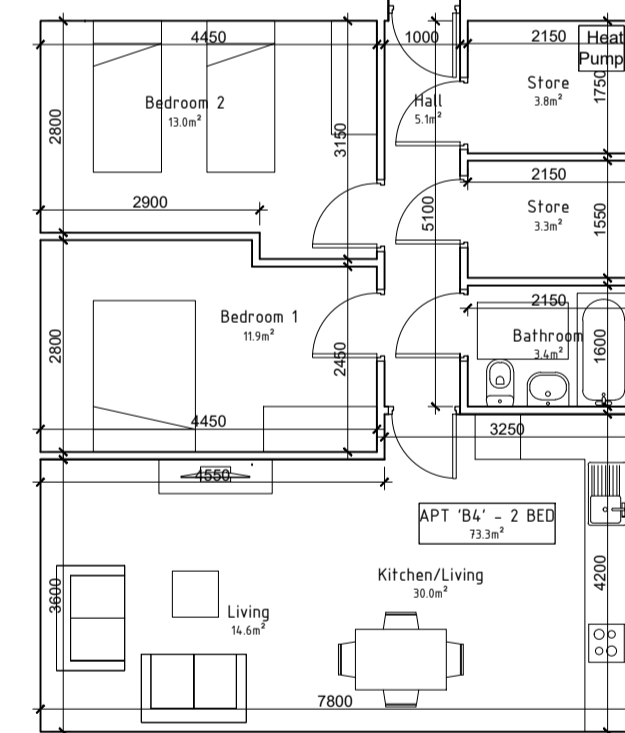
2-Bed/4P Apt. Type B3



APARTMENT TYPE 'B3':
2 Bedroom, 4 Person,

	Proposed [m ²]	Target [m ²]
Gross Floor Area	78.0 (107%)	73.0
Living Room	14.5	13.0
Kitchen & Dining	15.6	6.5 (min kitchen area)
Aggregate Living	30.1	30.0
Bedroom 1	11.4	11.4
Bedroom 2	13.2	13.0
Aggregate Bedrooms	24.6	24.4
Storage	7.0	6.0

2-Bed/4P Apt. Type B4

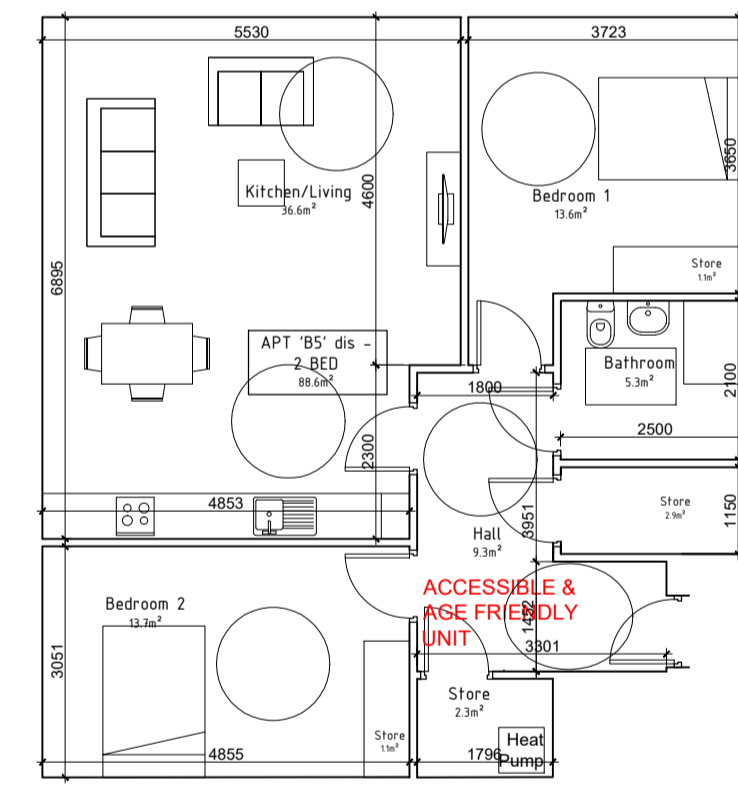


APARTMENT TYPE 'B4':
2 Bedroom, 4 Person,

	Proposed [m ²]	Target [m ²]
Gross Floor Area	73.3 (100%)	73.0
Living Room	14.6	13.0
Kitchen & Dining	15.4	6.5 (min kitchen area)
Aggregate Living	30.0	30.0
Bedroom 1	11.9	11.4
Bedroom 2	13.0	13.0
Aggregate Bedrooms	24.9	24.4
Storage	7.1	6.0

2-Bed/4P Apt. Type B5

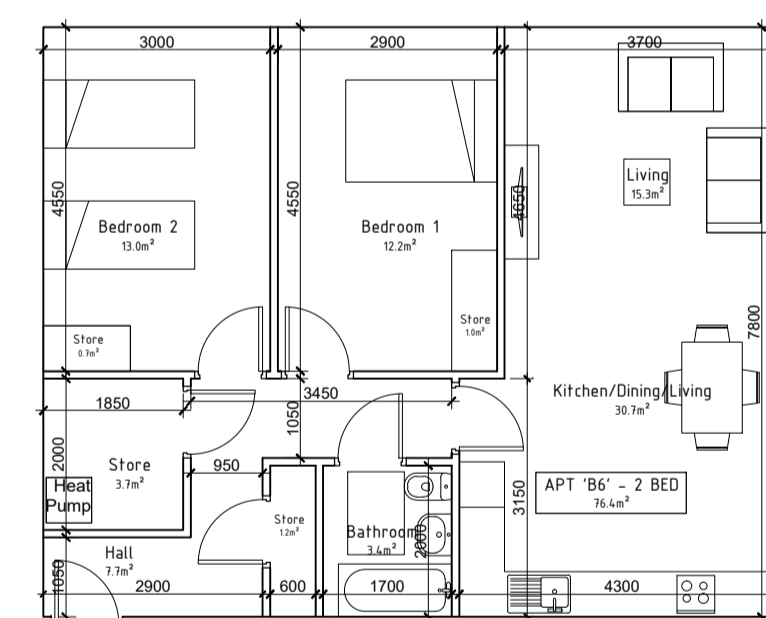
Designated Accessible & Age Friendly Unit



APARTMENT TYPE 'B5 dis':
2 Bedroom, 4 Person
Designated Age Friendly /Accessible Unit

	Proposed [m ²]	Target [m ²]
Gross Floor Area	88.6 (121%)	73.0
Living Room	25.4	13.0
Kitchen & Dining	11.2	6.5 (min kitchen area)
Aggregate Living	36.6	30.0
Bedroom 1	13.6	11.4
Bedroom 2	13.7	13.0
Aggregate Bedrooms	27.3	24.4
Storage	7.4	6.0

2-Bed/4P Apt. Type B6

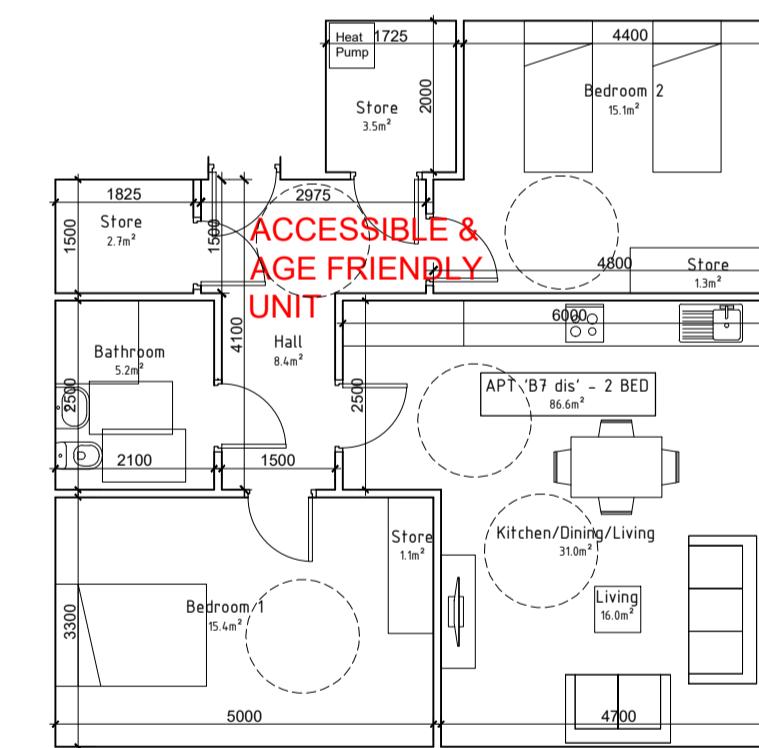


APARTMENT TYPE 'B6':
2 Bedroom, 4 Person,

	Proposed [m ²]	Target [m ²]
Gross Floor Area	76.4 (105%)	73.0
Living Room	15.3	13.0
Kitchen & Dining	15.4	6.5 (min kitchen area)
Aggregate Living	30.7	30.0
Bedroom 1	12.2	11.4
Bedroom 2	13.0	13.0
Aggregate Bedrooms	25.2	24.4
Storage	6.6	6.0

2-Bed/4P Apt. Type B7

Designated Accessible & Age Friendly Unit

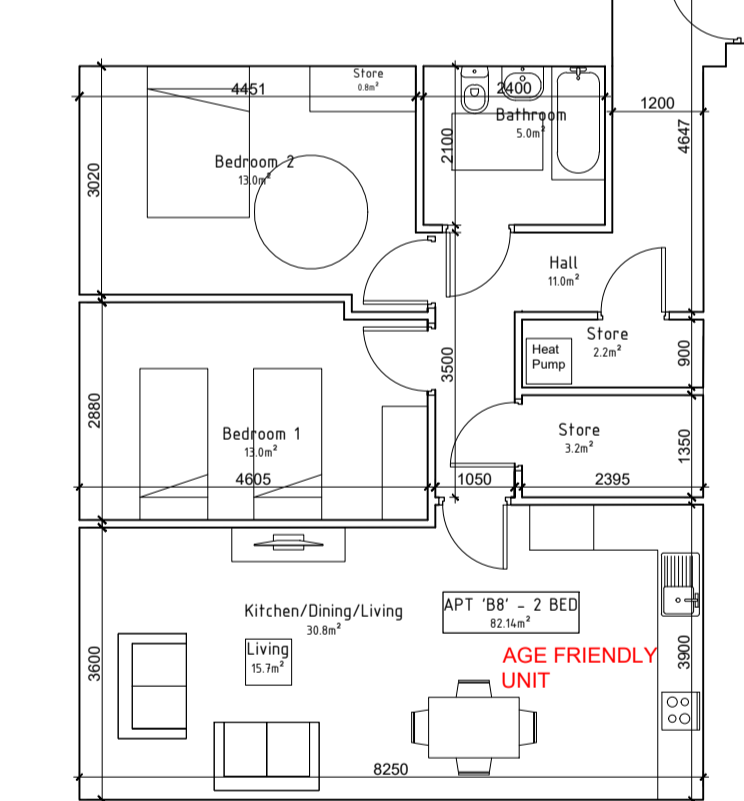


APARTMENT TYPE 'B7 dis':
2 Bedroom, 4 Person
Designated Age Friendly /Accessible Unit

	Proposed [m ²]	Target [m ²]
Gross Floor Area	86.6 (119%)	73.0
Living Room	16.0	13.0
Kitchen & Dining	15.0	6.5 (min kitchen area)
Aggregate Living	31.0	30.0
Bedroom 1	15.4	11.4
Bedroom 2	15.1	13.0
Aggregate Bedrooms	30.5	24.4
Storage	8.6	6.0

2-Bed/4P Apt. Type B8

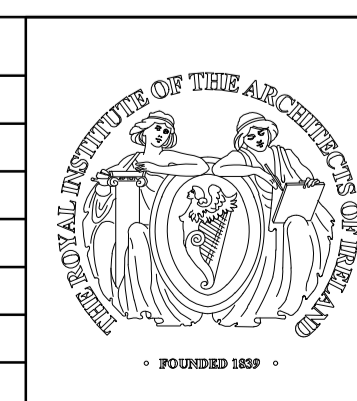
Age Friendly Unit



APARTMENT TYPE 'B8':
2 Bedroom, 4 Person
Designated Age Friendly /Accessible Unit

	Proposed [m ²]	Target [m ²]
Gross Floor Area	82.14 (113%)	73.0
Living Room	15.7	13.0
Kitchen & Dining	15.1	6.5 (min kitchen area)
Aggregate Living	30.8	30.0
Bedroom 1	13.0	11.4
Bedroom 2	13.0	13.0
Aggregate Bedrooms	26.0	24.4
Storage	6.2	6.0

REVISIONS AFTER LAST PLOT:



PROJECT: CHURCH FIELDS EAST	DATE: 26/05/2023	SCALE: 1:100@A1
DRAWING: PROPOSED APARTMENTS TYPES PLANS (SHEET 1)	DRAWN: RN K:IDR20009/P	JOB NO. 20009 DWG. NO. P-060
walsh associates ARCHITECTS & PROJECT MANAGERS	Stage: PLANNING	Revision:
Merchants House, 27-30 Merchants Quay, Dublin 8. Tel: (01) 633 4261. Fax (01) 633 4265 Email: info@walshassociates.ie		