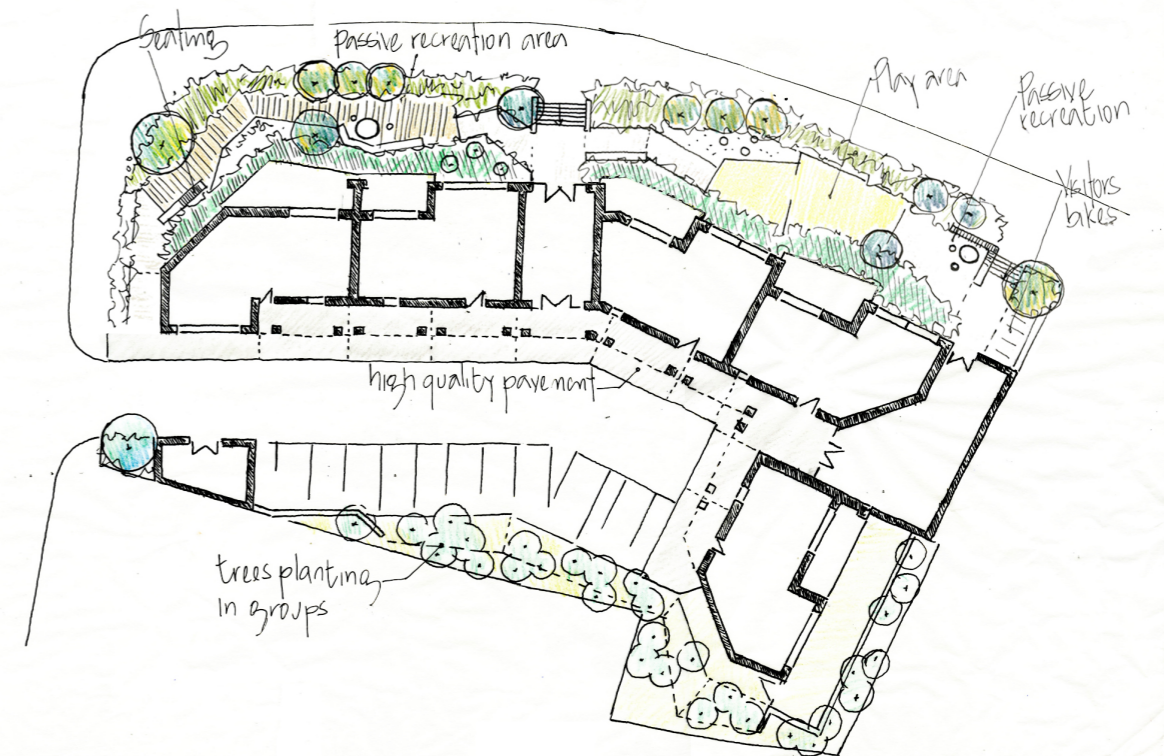
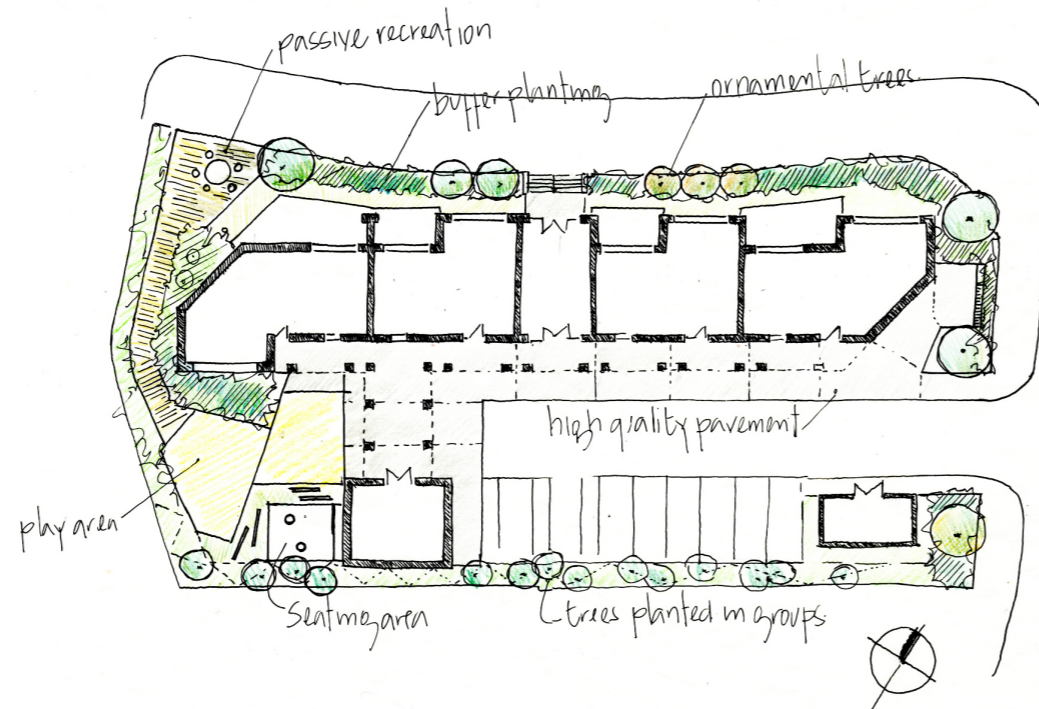


SEATOWN ROAD

DATE OF FIRST ISSUE:
REVISIONS: A

24.11.2022
28.11.2022



Contents

1.0 Design Development

2.0 Site 1

2.1 Site 2

3.0 Hard Landscape

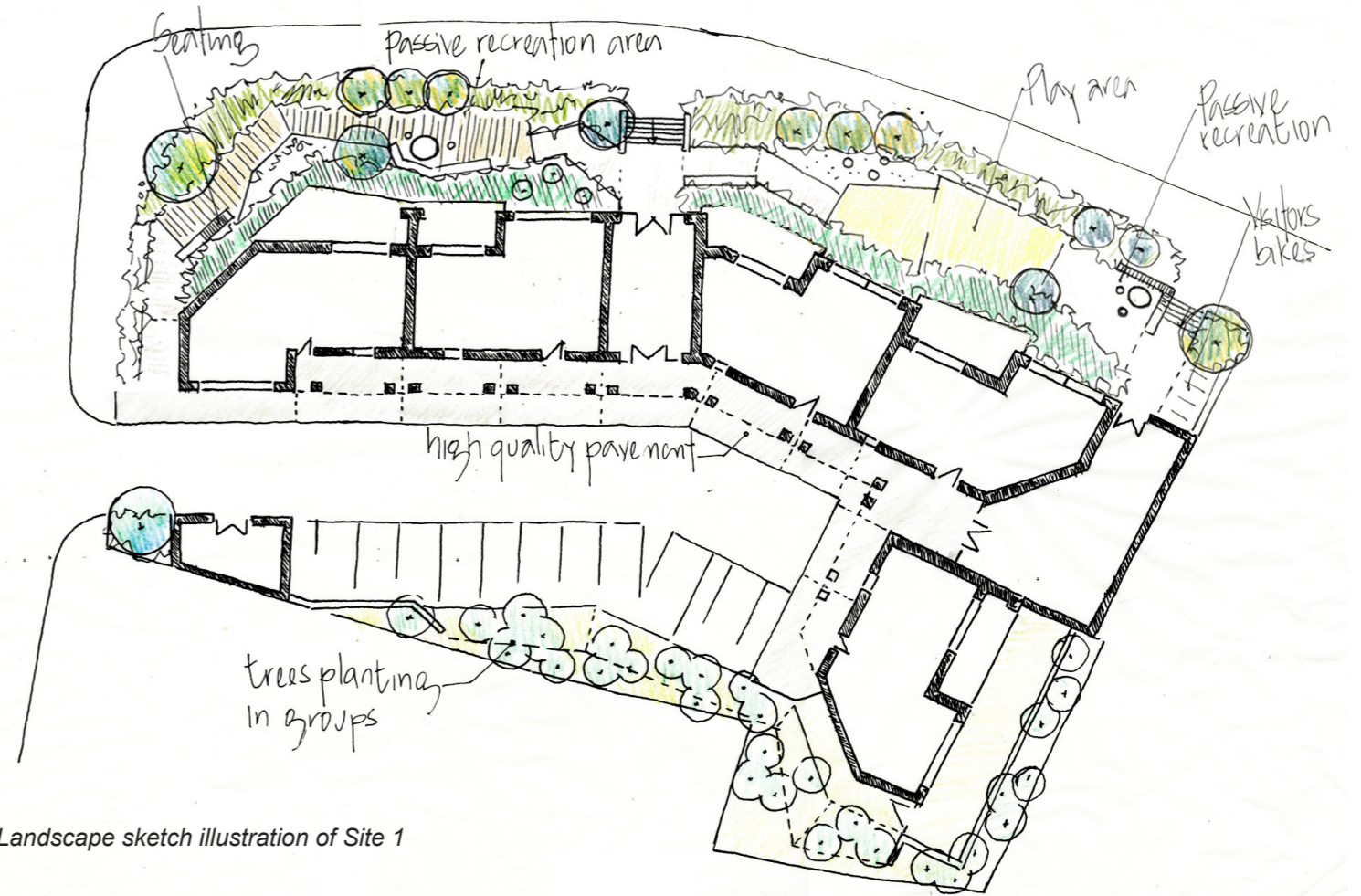
4.0 Incidental Space

4.1 Shared Surface and 'Greening' of the Car Park

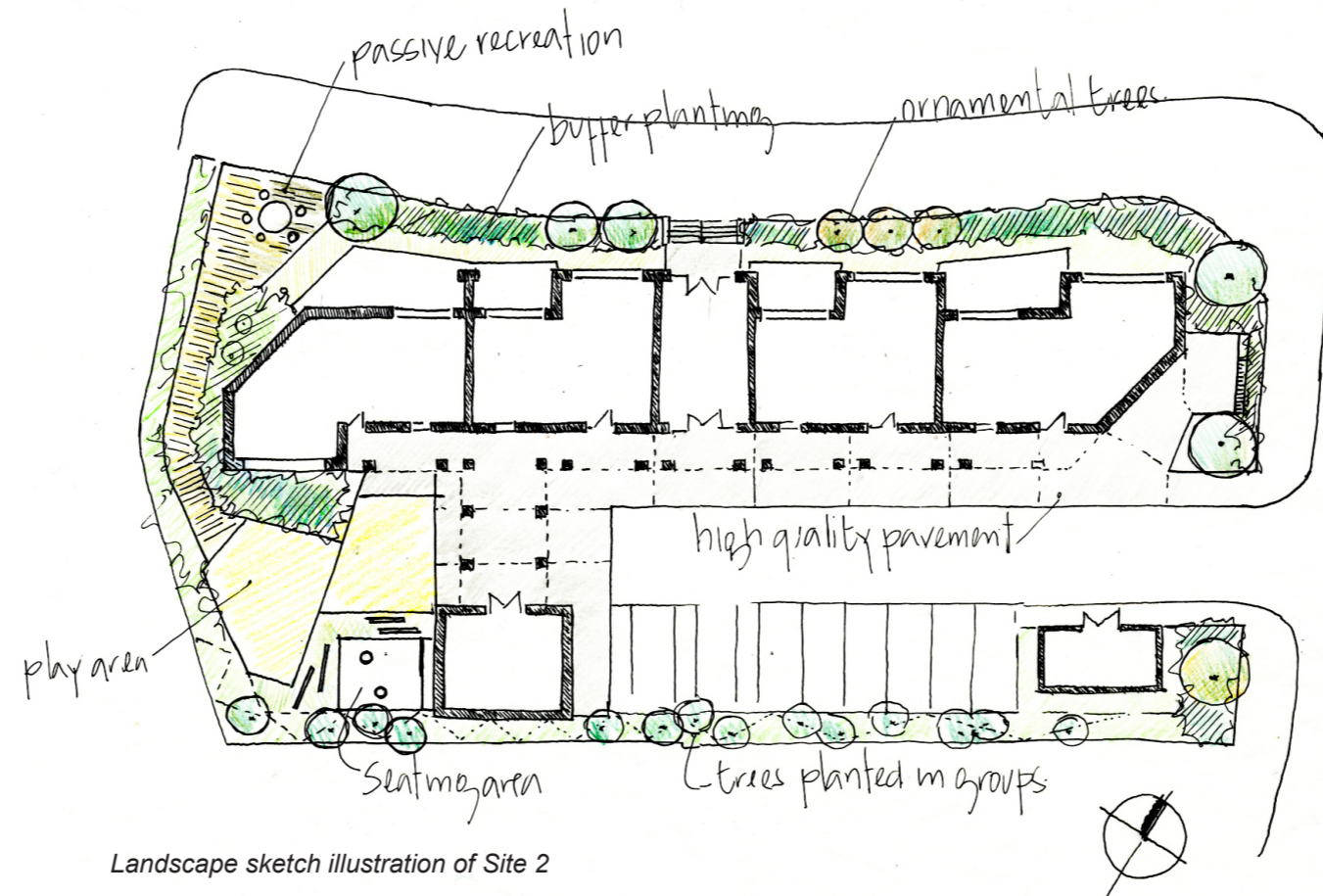
5.0 Soft Landscape

1.0 Design Development

A series of landscape sketches were created as part of the design development process for both sites. This process was used to establish the main design principles and develop a spatial understanding of the project scale, massing and orientation.



Landscape sketch illustration of Site 1



Landscape sketch illustration of Site 2

2.0 Site 1

Strategy for Site 1

The landscape strategy for Site 1, which is situated at the eastern end of the overall site, focuses on the treatment of the open space between the proposed building and the footpath on Seatown Road and the shared surface to the south of the proposed building. The landscape is designed to provide comfortable screening to ground floor apartments and to continue the green character of Seatown Road. In addition, several incidental spaces are incorporated in landscape for communal activities. Hard and soft landscape elements are amalgamated within a series of terraces, between the proposed apartments and the existing footpath, to create a space that accommodates opportunities for community interaction, passive recreation and play. The proposed shared surface car parking of Site 1 is based on a same strategy of being a pedestrian-friendly shared surface environment with the proposed planting. The level change between the shared surface courtyard and the southern boundary is facilitated by tree planting in a soft landscape embankment to maximise planting opportunities on the subject site.



Landscape plan of Site 1

3.0 Hard Landscape

Proposed Hard Landscape Materials

The selection of paving and other landscape materials is determined by proposed function, longevity and durability. Paving materials where practical are proposed to be constructed in a way which is sensitively integrated with lawn and soft landscape, in order to minimise the impact of hard landscape surfaces.



Illustration of ground concrete at Bridgetoot St. Park by DFLA



Illustration of timber deck in an external space at Berghus by Niva



Illustration of wetpour impact absorbing play surfacing in Knockrabo, Goatstown by DFLA

4.0 Incidental Space

A range of spaces interface with each other to create opportunities for recreation in a lush landscape setting.



Illustration of incidental space with seating. Wohnungsbau by GHL.



Illustrations of incidental spaces with seating and activities. Left: Project in Moscow by Utro. Right: The Discovery Garden by Isthmus

4.1 Shared Surface and 'Greening' of the Car Park

The proposed shared surface is formed by the use of a cohesive material palette, which helps establish pedestrian friendly zone in the courtyard. Soft landscape is designed to break up the hard surfaces to establish a pleasant 'green' inner courtyard character.



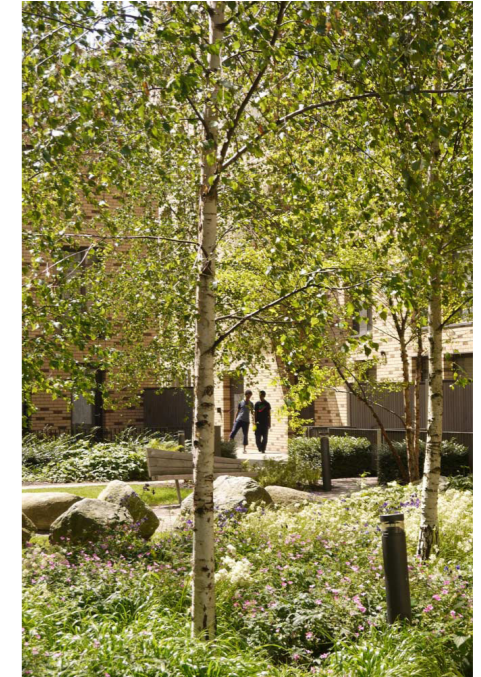
Illustration of planting surrounding car parking at Scholarstown Wood in Rathfarnham by DFLA

5.0 Soft Landscape

Soft landscape is utilised to make and reinforce sub-spaces within the larger site area, for visual screening, defensible space, visual interest, ecological purposes and to guide or direct people's movement.



Illustration of soft landscape at Heel Europe by Delva



Illustrations of St. Andrews by Townshend

Selection of Planting

A range of planting species are selected in reference to the granted Swords Cultural Quarter development (Plan reg. ref: PARTXI/002/22) to establish a coherent planting strategy within the wider area.



Illustration of proposed planting species to match those proposed in Swords Cultural Quarter development
 Left: Frangula alnus, Centre: Euonymus europaeus, Right: Dryopteris affinis