



SITE NO 2 - PROPOSED FIRST / SECOND / THIRD FLOOR PLANS (SCALE 1:100)

THE PROPOSED DEVELOPMENT INCLUDES:

The construction of 2 number 4 storey apartment buildings - One building on Site Number 1 and one building on Site Number 2, comprising of 36 number apartments in total.

The apartment buildings will be faced in brick and render and have flat green roofs with solar panels.

Landscaping works for both sites include boundaries, SUDs drainage, and all associated site works.

Site Number 1 includes:

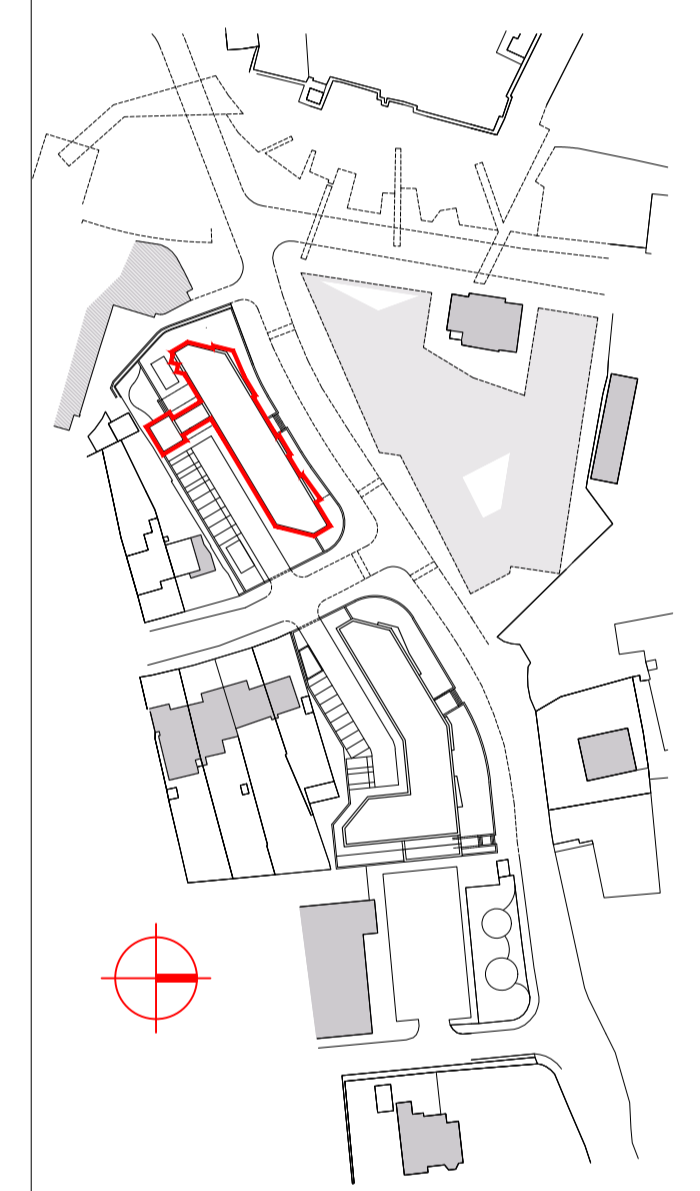
20 number 2 bed (4 person) apartments across 4 floors with stairs / lift / external walkway access and;

Hard and soft landscaping with 10 number car parking spaces and a communal bin store to the south east of the site; and secure bike stores to the north east of the site; and communal landscaping to the north west of the site.

Site Number 2 includes:

8 number 2 bed (4 person) apartments and 8 number 2 bed (3 person) apartments across 4 floors with stairs / lift / external walkway access and;

Hard and soft landscaping including 8 number car parking spaces and bin and secure bike stores and communal landscaping to the south east of the site and communal landscaping to the north west of the site.



**Comhairle Contae Fhine Gall
Fingal County Council**
ARCHITECTS' DEPARTMENT
FINGAL COUNTY HALL, MAIN ST.,
SWORDS CO., DUBLIN
Tel: (01) 890 5050, Fax: (01) 890 5079

COUNTY ARCHITECT
FIONNUALA MAY Dip.Arch., B.Arch. Sc., M.U.B.C., M.R.I.A.I

CLIENT
FCC Housing Department

PROJECT TITLE
Proposed Apartment Development
at Seatown Road, Swords

PROJECT STAGE
Part XI

DRAWING TITLE
SITE NO 2
PROPOSED FIRST / SECOND / THIRD
FLOOR PLANS

PROJECT ARCHITECT
DD

DRAWN
DD CHECKED
CB

SCALE
As shown @ A1 DATE
September 2022

DRAWING NUMBER
22027-P-402 REV