



SITE NO 2 - PROPOSED GROUND FLOOR PLAN (SCALE 1:100)

THE PROPOSED DEVELOPMENT INCLUDES:

The construction of 2 number 4 storey apartment buildings - One building on Site Number 1 and one building on Site Number 2, comprising of 36 number apartments in total.

The apartment buildings will be faced in brick and render and have flat green roofs with solar panels.

Landscaping works for both sites include boundaries, SUDs drainage, and all associated site works.

Site Number 1 includes:

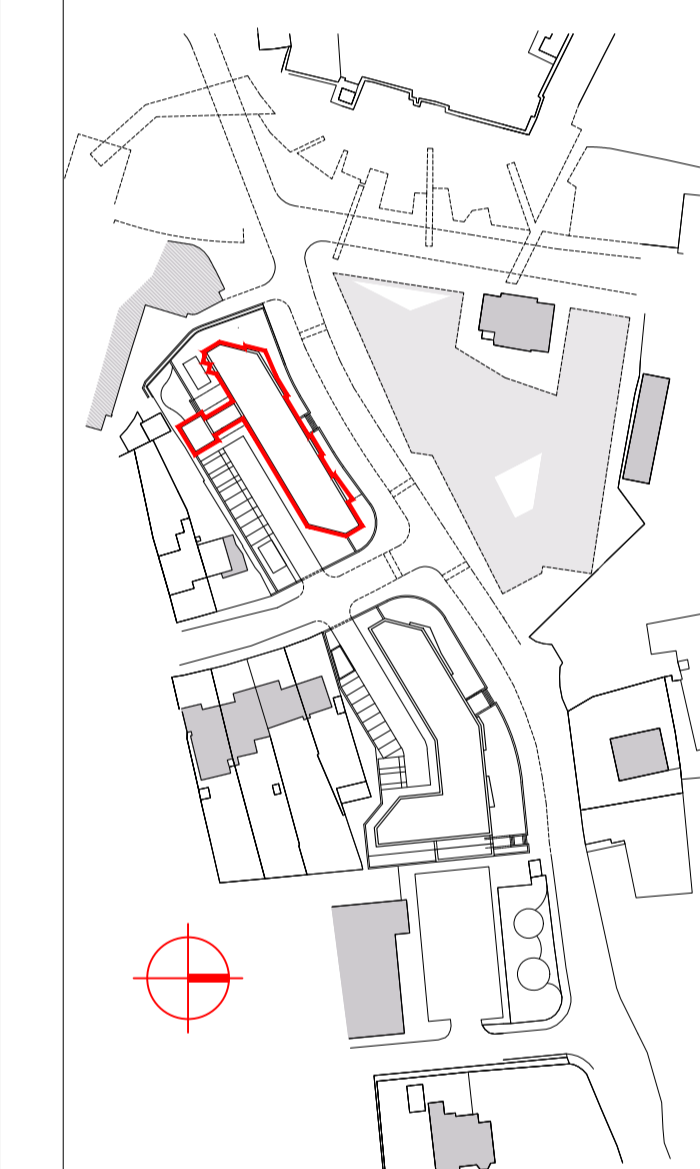
20 number 2 bed (4 person) apartments across 4 floors with stairs / lift / external walkway access and;

Hard and soft landscaping with 10 number car parking spaces and a communal bin store to the south east of the site; and secure bike stores to the north east of the site; and communal landscaping to the north west of the site.

Site Number 2 includes:

8 number 2 bed (4 person) apartments and 8 number 2 bed (3 person) apartments across 4 floors with stairs / lift / external walkway access and;

Hard and soft landscaping including 8 number car parking spaces and bin and secure bike stores and communal landscaping to the south east of the site and communal landscaping to the north west of the site.



Comhairle Contae Fhine Gall
Fingal County Council
 ARCHITECTS' DEPARTMENT
 FINGAL COUNTY HALL, MAIN ST.,
 SWORDS CO., DUBLIN
 Tel: (01890 5050, Fax: (01) 890 5079

COUNTY ARCHITECT
 FIONNULA MAY Dip.Arch., B.Arch. Sc., M.U.B.C., M.R.I.A.I

CLIENT
 FCC Housing Department

PROJECT TITLE
 Proposed Apartment Development
 at Seatown Road, Swords

PROJECT STAGE
 Part XI

DRAWING TITLE
 SITE NO 2
 PROPOSED GROUND FLOOR PLAN

PROJECT ARCHITECT
 DD

DRAWN
 DD

CHECKED
 CB

SCALE
 As shown @ A1

DATE
 September 2022

DRAWING NUMBER
 22027-P-401

REV