

**Zoning Objectives**

CI - Community Infrastructure	Provide for and protect civic, religious, community, education, health care and social infrastructure
GB - Greenbelt	Protect and provide for a Greenbelt
GE - General Employment	Provide opportunities for general enterprise and employment
HA - High Amenity	Protect and enhance high amenity areas
HT - High Technology	Provide for office, research and development and high technology/high technology manufacturing type employment in a high quality built and landscaped environment
LC - Local Centre	Protect, provide for and/or improve local centre facilities
MC - Major Town Centre	Protect, provide for and/or improve major town centre facilities
OS - Open Space	Preserve and provide for open space and recreational amenities
RA - Residential Area	Provide for new residential communities subject to the provision of the necessary social and physical infrastructure
RB - Rural Business	Provide for and facilitate rural-related business which has a demonstrated need for a rural location
RC - Rural Cluster	Provide for small scale infill development serving local needs while maintaining the rural nature of the cluster
RS - Residential	Provide for residential development and protect and improve residential amenity
RU - Rural	Protect and promote in a balanced way, the development of agriculture and rural-related enterprise, biodiversity, the rural landscape, and the built and cultural heritage
RV - Rural Village	Protect and promote the character of the Rural Village and promote a vibrant community in accordance with an approved use plan, and the availability of physical and community infrastructure
TC - Town and District Centre	Protect and enhance the special physical and social character of town and district centres and provide and/or improve urban facilities

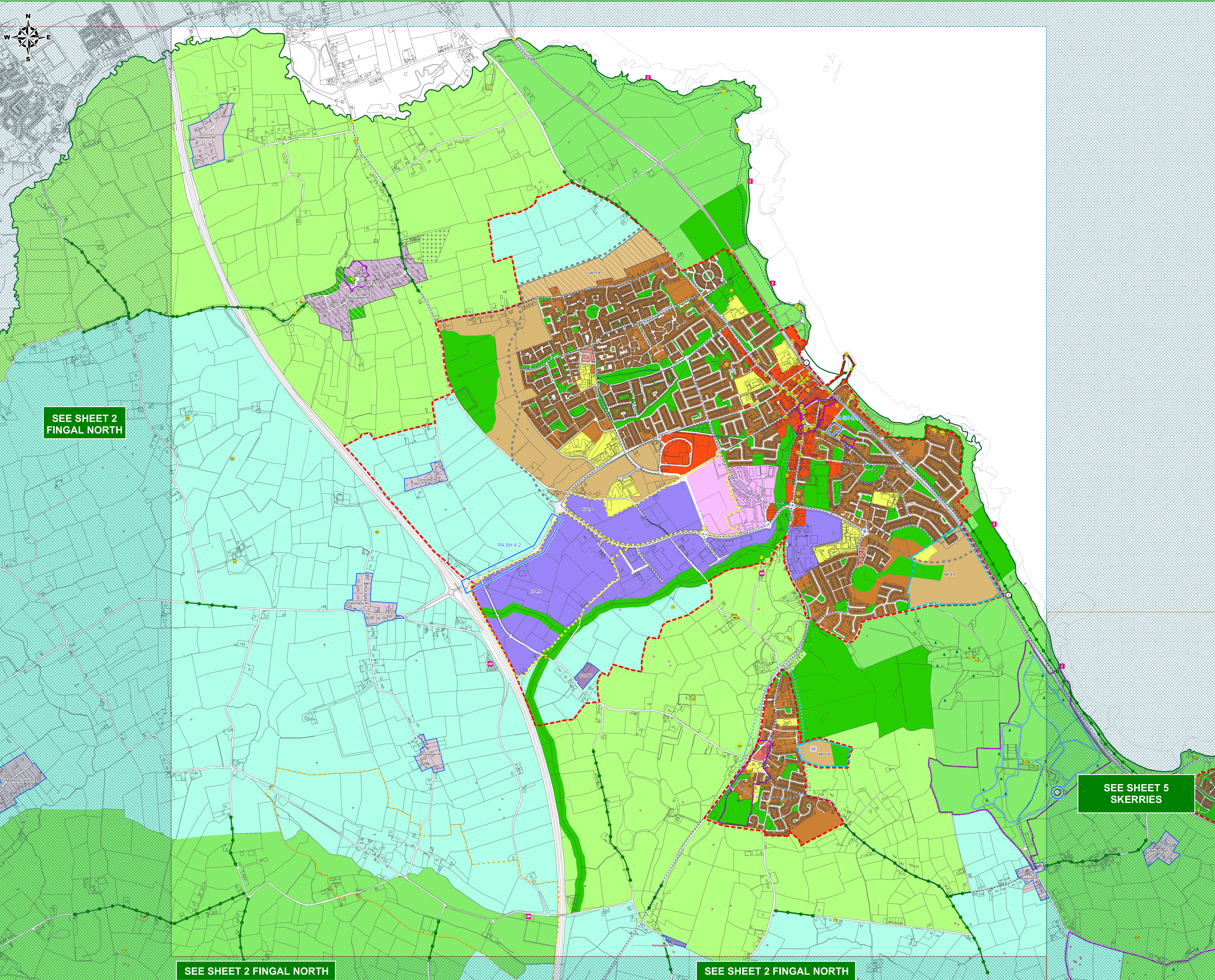
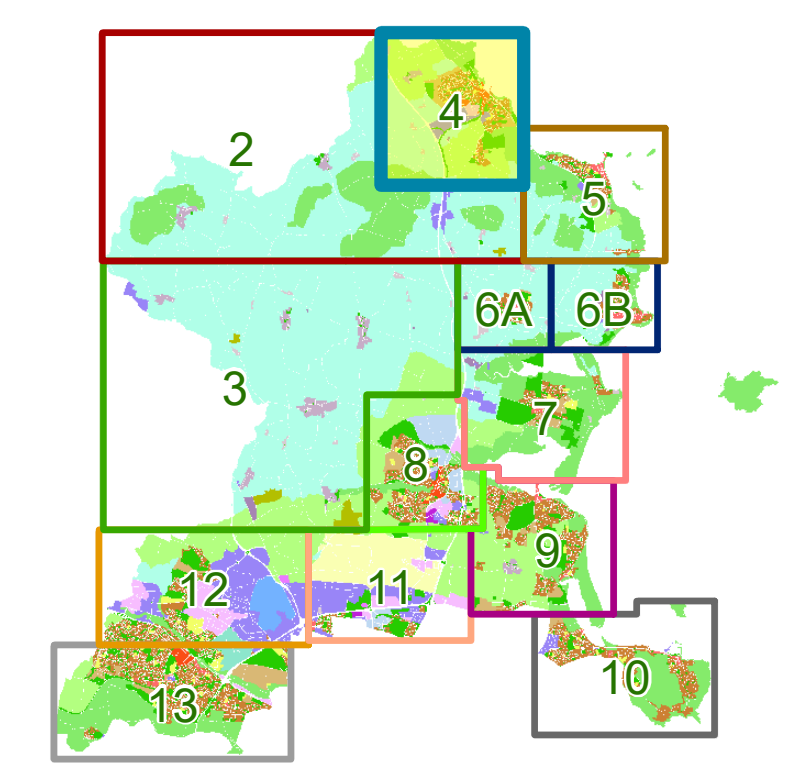
**Specific Objectives**

County Boundary	
Architectural Conservation Area	
Burial Site	
Development Boundary	
Masterplan Area	
Study Area	
Framework Plan	
Zone of Archaeological Notification	
Local Area Plan	
Indicative Greenway	
Road Proposal	
Preserve Views	
Draft Greater Dublin Area (GDA) Cycle Network Plan	
Recreational Route	
Local Objective Points	
Protected Structures	
Sites and Monuments Record (SMR)	
Coastal Walk	
Proposed School Site	
Traveller Accommodation	
Protect & Preserve Trees, Woodlands and Hedgerows	

**Proposed Amendment**

Note: For further detail please refer to the Draft Written Statement, Draft Written Statement Appendices and the Proposed Material Alterations to the Draft Development Plan 2023 - 2029 Documents. The GDA cycle networks are an extract from: <https://www.nationaltransport.planning-and-investment/transport-investment/greater-dublin-area-cycle-network-plan> (Please see this website for further information). To view details of Sites and Monuments Record see: <https://maps.archaeology.ie/HistoricEnvironment/>

**Sheet Index Map**



SEE SHEET 2 FINGAL NORTH

SEE SHEET 5 SKERRIES

SEE SHEET 2 FINGAL NORTH

SEE SHEET 2 FINGAL NORTH