

NOTES

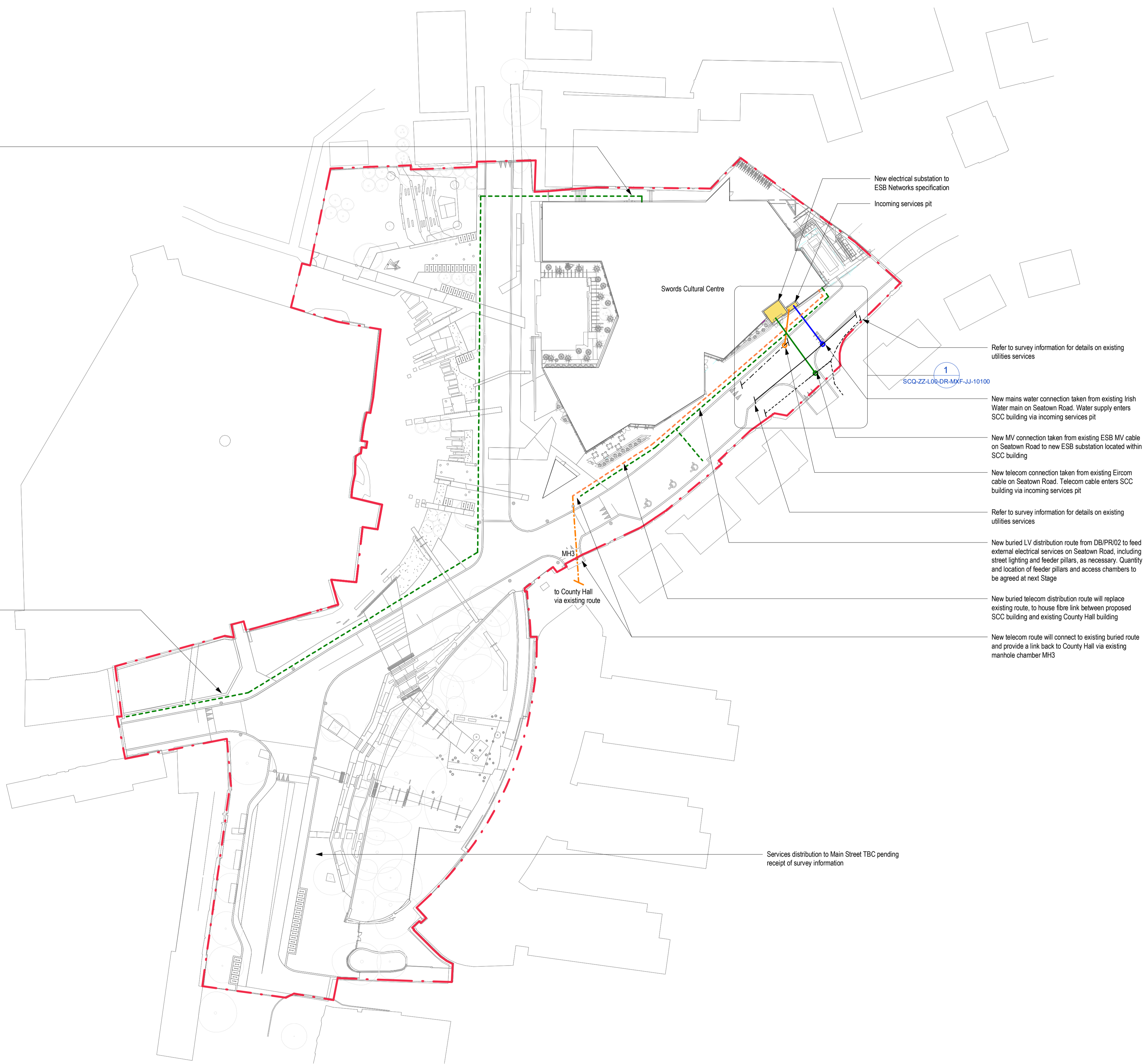
1. This drawing is to be read in conjunction with all other Max Fordham LLP drawings, specifications and schedules.
2. Refer to the architects and structural engineers information for additional details.
3. Location of existing utilities services is based on surveyed information produced by others, which was available to us at the time. Max Fordham LLP are not responsible for the accuracy and completeness of existing utilities services shown in this drawing. Please refer to the relevant survey drawings and asset maps for this information.
4. This drawing informs our strategy and design intent only, and does not show the full extent of site services to be installed.

KEY

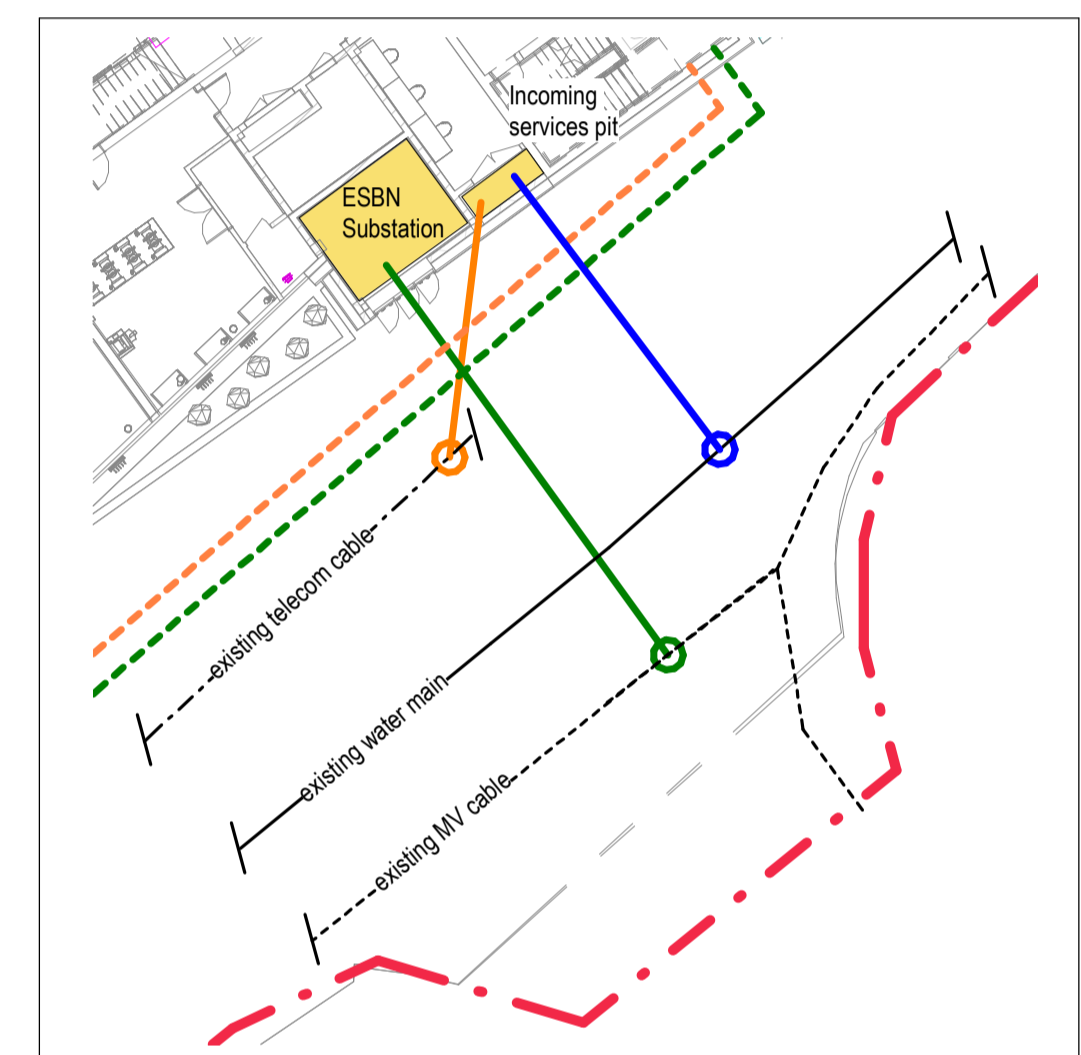
- Incoming MV supply
- Incoming mains water supply
- Incoming telecoms cable
- - - LV distribution route
- - - New telecom route for link to County Hall
- - - Existing telecom route for link to County Hall
- - - Site red line boundary
- - - Existing MV cable (ESB Networks)
- - - Existing mains water supply (Irish Water)
- - - Existing telecoms cable (Eircom)

Buried LV distribution route from DB/PR/01 to feed external electrical services on North Street, including street lighting and feeder pillars, as necessary. Quantity and location of feeder pillars and access chambers to be agreed at next Stage

Buried LV distribution route from DB/PR/01 to feed external electrical services on Bridge Street, including street lighting and feeder pillars, as necessary. Quantity and location of feeder pillars to be agreed at next Stage

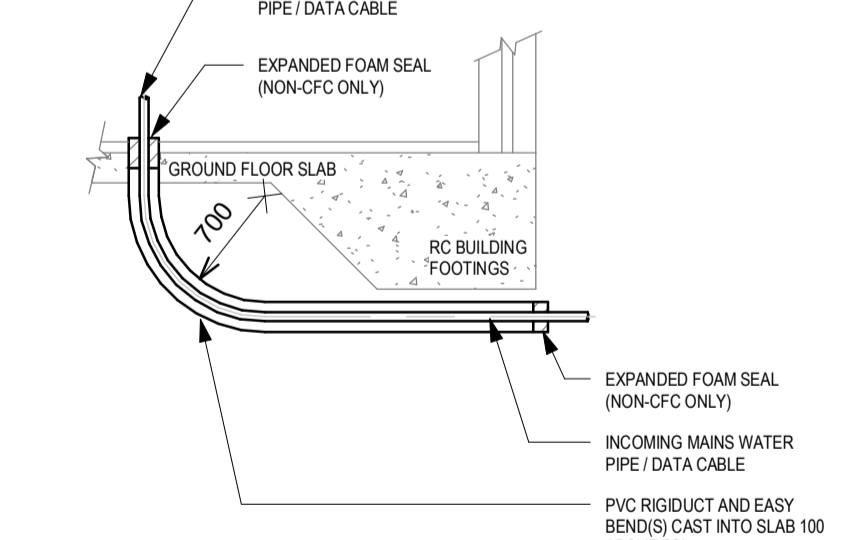


- New electrical substation to ESB Networks specification
- Incoming services pit
- Refer to survey information for details on existing utilities services
- SCQ-ZZ-L00-DR-MXF-JJ-10100
- New mains water connection taken from existing Irish Water main on Seatown Road. Water supply enters SCC building via incoming services pit
- New MV connection taken from existing ESB MV cable on Seatown Road to new ESB substation located within SCC building
- New telecom connection taken from existing Eircom cable on Seatown Road. Telecom cable enters SCC building via incoming services pit
- Refer to survey information for details on existing utilities services
- New buried LV distribution route from DB/PR/02 to feed external electrical services on Seatown Road, including street lighting and feeder pillars, as necessary. Quantity and location of feeder pillars and access chambers to be agreed at next Stage
- New buried telecom distribution route will replace existing route, to house fibre link between proposed SCC building and existing County Hall building
- New telecom route will connect to existing buried route and provide a link back to County Hall via existing manhole chamber MH3



1 Detail 1 - Proposed incoming site services
1 : 250

DUCT ENTRY: MAINS WATER DUCT / DATA CABLE DUCT (Scale 1:50)



DUCT ENTRY: LV OR HV CABLE DUCT (Scale 1:50)

