



Protected Cycle Lane – St. Cronan's Avenue & Brackenstown Road SRTS at St Cronan's NS





Project Structure

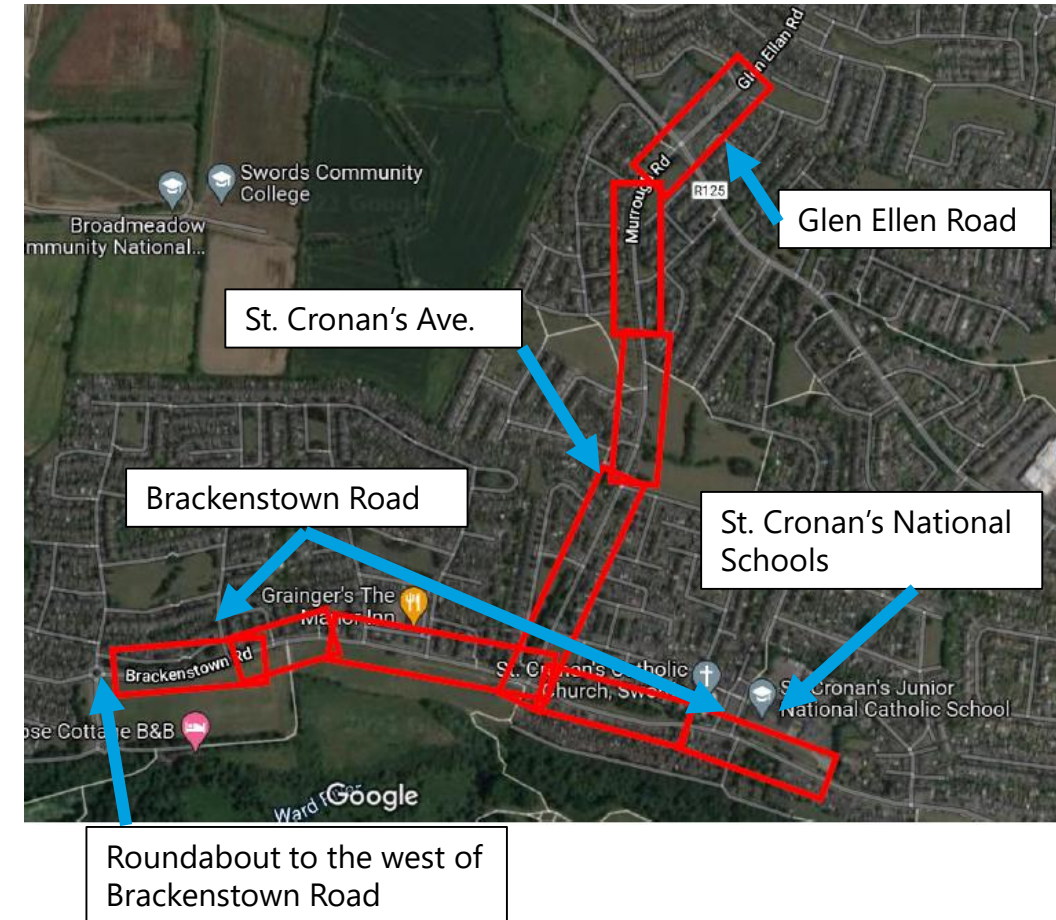
- **Sanctioning Authority** – National Transport Authority (NTA)
- **Funding Stream** - Sustainable Transport Measures Grants (STMG) Programme 2022
- **Sponsoring Agency** – Fingal County Council’s Active Travel Dept.
- **Design-Build Contractor** – GMC Utilities Group
- **Contractor’s Designers** – Roughan O’Donovan



Project Description



- 4.3 Km of protected cycle lanes
- Improved connectivity for cycling and walking to schools, public transport, residential estates and Swords Town
- Upgrade to junction crossing points
- Resurfacing works to carriageway and cycle lane
- Installation of cycle friendly gully covers
- Delineated cycle lanes with bollards & line marking
- Traffic calming measures at junctions and schools



New Controlled Crossing – Swords Manor Football Club



Toucan Crossing Street View Location:

Location of the toucan crossing shown in red.

Footpath Upgrade Works:
Footpath upgrade works shown in orange.



Toucan Crossing:

A toucan crossing will be provided at the location shown in red to provide a crossing point for pedestrians and cyclists.

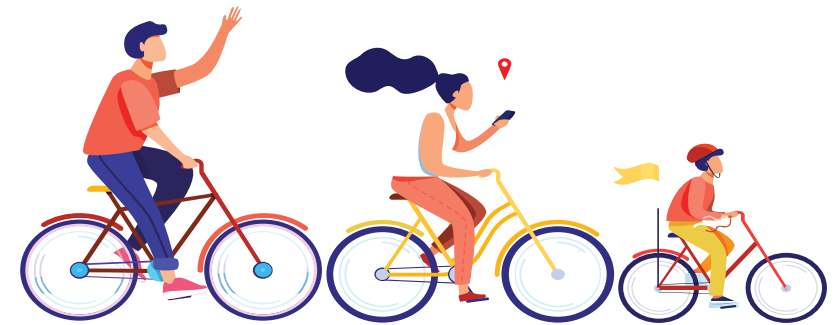


Image shown above for illustration purpose only.

Progress To Date



- NTA funding approval for the entire scheme
- Early and ongoing engagement with stakeholders such as Schools, Parish Diocese, Dublin Bus, ESB and FCC Operations and Parks.
- Advanced works - cycle friendly gullies installed
- Safe Routes to School (SRTS) Programme incorporated
- Coordinated design between Contractor and Consultant



Scope of works – St. Cronan's Avenue & Murrough



- Upgrading junctions - St Cronan's Ave (Ent 1), Valley View, St Cronan's Avenue (Ent 2), The Gallops, Lioscian, Ardcian Park and Cianlea
- Repair of damaged concrete footpaths
- Installation of bollards along cycle lane
- Coloured cycle lanes at conflict points and appropriate line markings



St Cronan's Avenue



Example –
Junction Upgrade

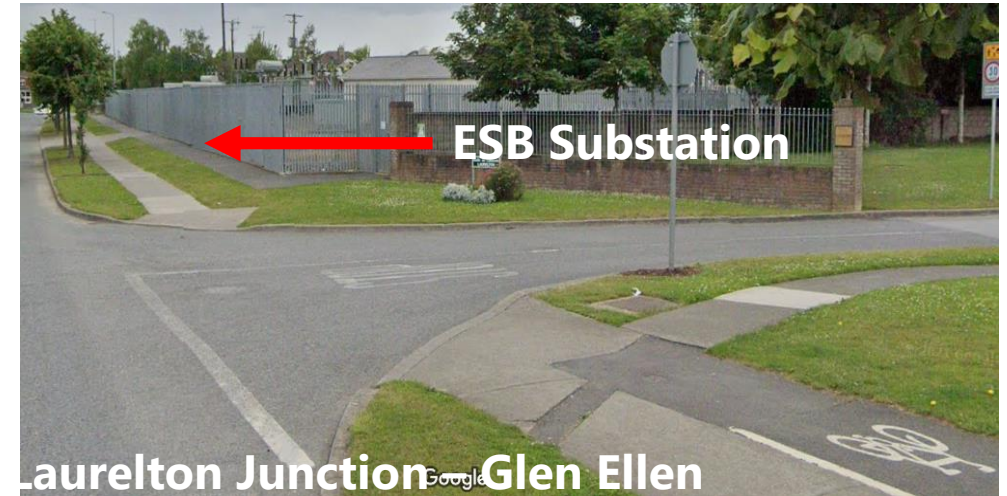


Example –
Protected Cycle Lane

Scope of works – Glen Ellen Road (Along ESB Substation)



- Construct new cycle lane in front of ESB Substation
- Enhance connectivity between existing cycle paths either side of the ESB Substation on Rathbeale and Glen Ellen Road.
- Junction upgrade at Laurelton estate entrance
- Upgrading Rathbeale and Murrough Road junction to enhancing cyclist and pedestrian movements.



Scope of works – Brackenstown Road

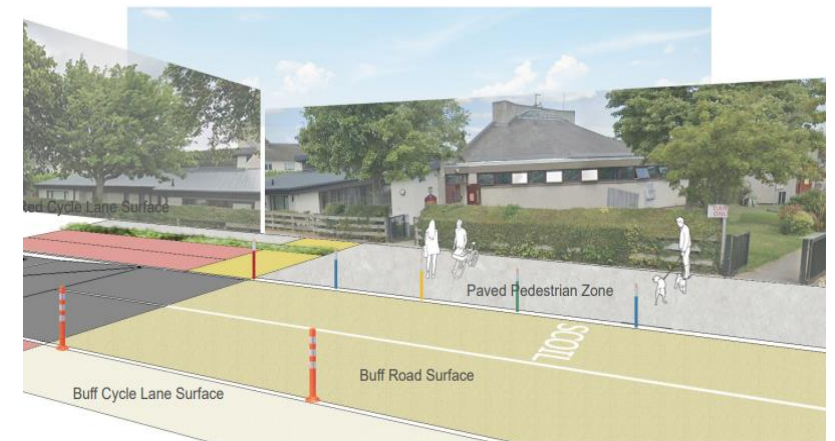
- Front of school treatments to enhance access & safety for pedestrians and cyclists.
- Upgrade of Pedestrian Crossings, & provision of new crossing point to Swords Manor pitches.
- New cycle lane both sides including section off-road
- New and reprofiling of traffic calming measures
- Resurfacing of poor condition carriageway including upgrading of damaged bus laybys
- Installation of bollards, line marking and cycle friendly gullies
- Upgrading of junctions along the route, Including Berwick Ave, Ormond Ave and Swords Manor Ave.



Safe Routes to Schools (SRTS) Programme



- Scheme incorporating St. Cronan's Jnr & Snr National Schools
- Provides an alternative, attractive means of travel to school
- Integrated street design with protected cycle scheme
- Aiming to reduce traffic volumes and congestion
- Improve road safety to reduce speeds
- Replace on street parking in front of school and church for improved cycling and walking facilities.





Thank You

If you have any queries or questions please contact one of the Project Team or email us at Active.Travel@fingal.ie "