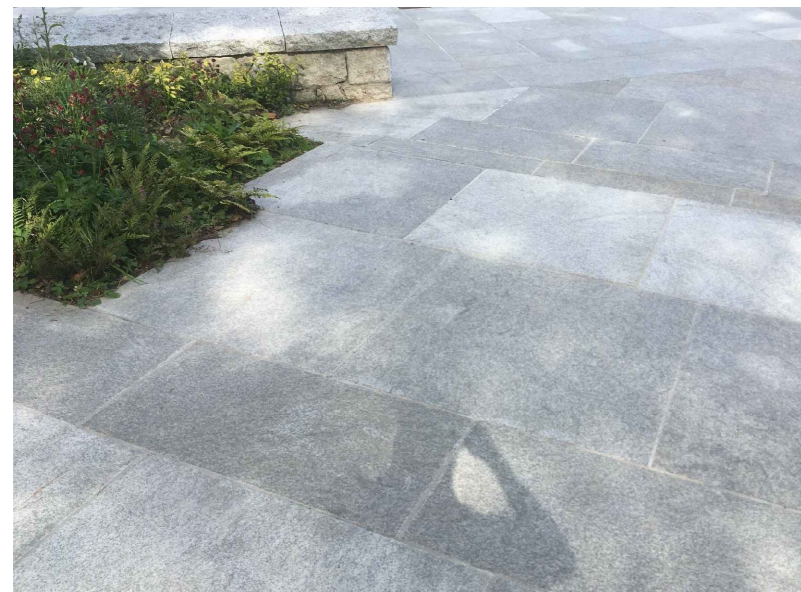
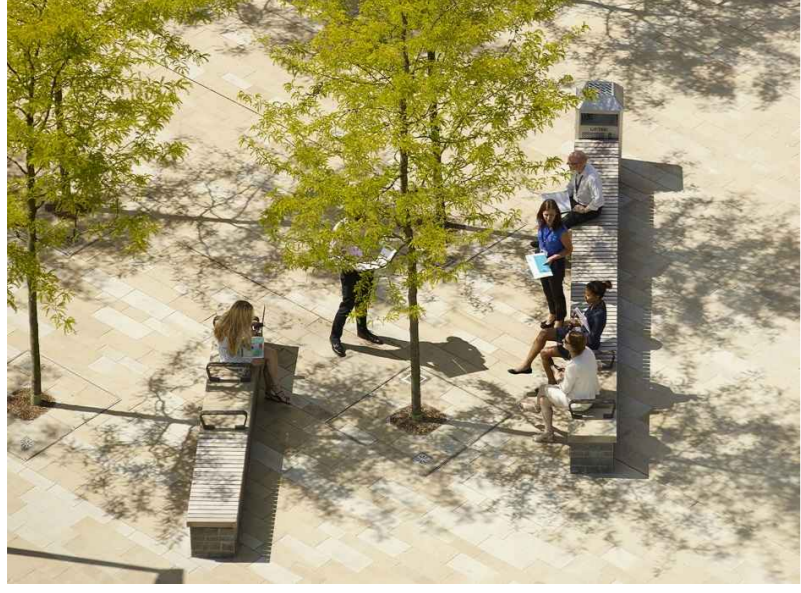


ILLUSTRATIVE EXAMPLES OF PROPOSED PUBLIC REALM ELEMENTS: SURFACING, SEATING AND TREE PLANTING



DWG NO. LP-1-03



OPPORTUNITY TO RE-SURFACE.

EXISTING TREES TO BE RETAINED.

OPPORTUNITY TO RE-SURFACE DRIVEWAYS.

INLINE BUS STOP WITH SHARED AREA

EXISTING GREEN SPACE

SECTION 02

DWG NO. LP-1-01

THE DUNES

PROPOSED FOOTPATH SURFACING TO EXTEND OVER RAISED CROSSING TO HIGHLIGHT PEDESTRIAN PRIORITY.

PROPOSED BEVELLED KERB TO ACCESS POINTS.

PROPOSED HIGH QUALITY SURFACING TO PEDESTRIAN FOOTPATHS.

OPPORTUNITY FOR TREE PLANTING AND CYCLE PARKING FACILITIES.

SITE LAYOUT LEGEND

- HIGH QUALITY SURFACING TO FOOTPATHS, RAISED CROSSINGS & PARKING BAYS WHERE APPROPRIATE (e.g. NATURAL STONE PAVING SLABS / SETTS)
- CONCRETE SURFACING TO FOOTPATHS AND DRIVEWAYS
- BUFF COLOURED ASPHALT SURFACING TO CYCLE TRACK/ LANE
- RED COLOURED ASPHALT SURFACING TO CYCLE TRACK/ LANE AT ROAD JUNCTIONS
- ASPHALT SURFACING TO CARRIAGEWAY
- BEVELLED KERB TO ACCESS POINTS
- TACTILE PAVING (CONTROLLED CROSSING)
- TACTILE PAVING (UNCONTROLLED CROSSING)
- PROPOSED TREE PLANTING (FOOTPATH)
- PROPOSED TREE PLANTING (WITHIN BUILDING CURTLAGE)
- EXISTING TREE TO BE RETAINED