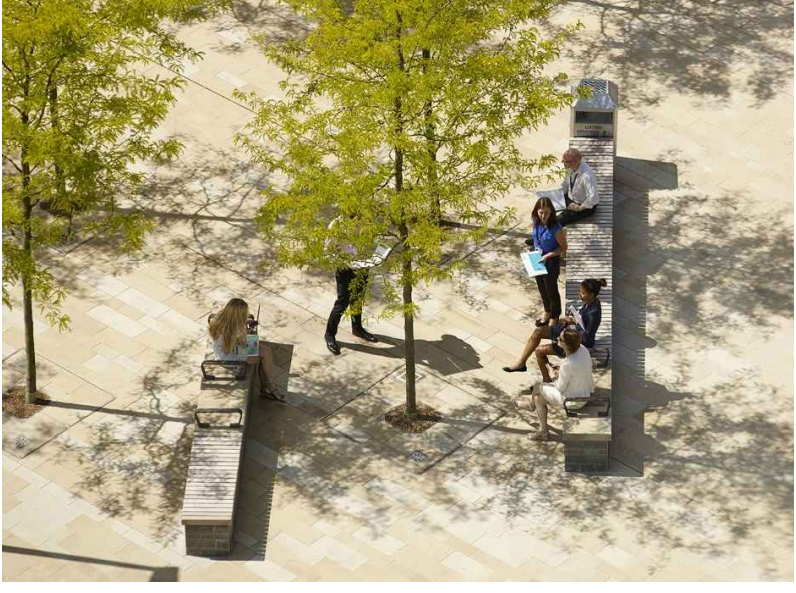
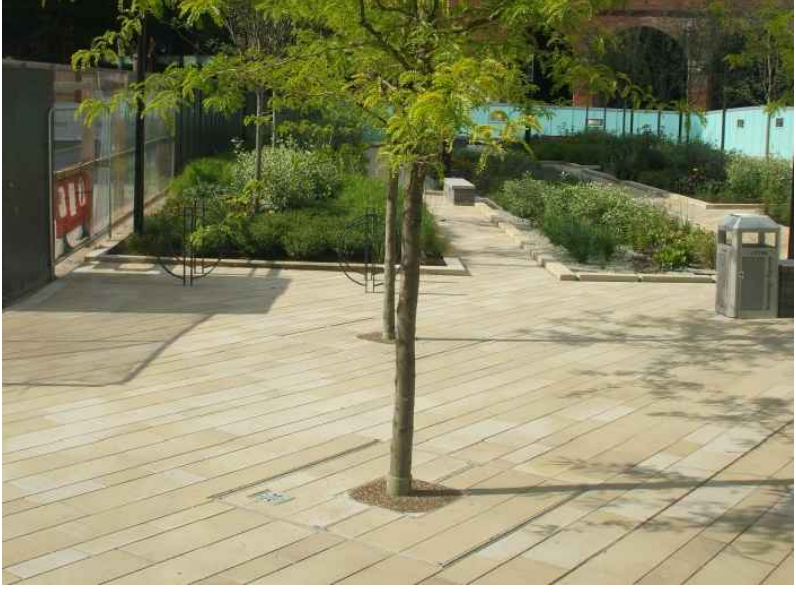
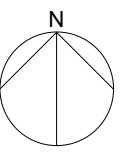


ILLUSTRATIVE EXAMPLES OF PROPOSED PUBLIC REALM ELEMENTS: SURFACING, SEATING AND TREE PLANTING



DWG NO. LP-1-02



SITE LAYOUT LEGEND

- HIGH QUALITY SURFACING TO FOOTPATHS, RAISED CROSSINGS & PARKING BAYS WHERE APPROPRIATE (e.g. NATURAL STONE PAVING SLABS /SETTS)
- CONCRETE SURFACING TO FOOTPATHS AND DRIVEWAYS
- BUFF COLOURED ASPHALT SURFACING TO CYCLE TRACK/ LANE
- RED COLOURED ASPHALT SURFACING TO CYCLE TRACK/ LANE AT ROAD JUNCTIONS
- ASPHALT SURFACING TO CARRIAGEWAY
- BEVELLED KERB TO ACCESS POINTS
- TACTILE PAVING (CONTROLLED CROSSING)
- TACTILE PAVING (UNCONTROLLED CROSSING)
- PROPOSED TREE PLANTING (FOOTPATH)
- PROPOSED TREE PLANTING (WITHIN BUILDING CURTLAGE)
- EXISTING TREE TO BE RETAINED



**ATKINS**  
Member of the SNC-Lavatin Group



**Comhairle Contae Fhine Gall**  
Fingal County Council



CLIENT: FINGAL COUNTY COUNCIL

PROJECT/DRAWING TITLE: PORTMARNOCK PUBLIC REALM - SITE LAYOUT (1 OF 5)

LOCATION: PORTMARNOCK

DRAWING NUMBER: 22002-CO-LP-1-01-REV-2

SCALE: 1:250@A1

DATE: 15.03.2022