

DWG NO. LP-4-01

BALDOYLE LIBRARY

PROPOSED PLANTERS WITH SEATING AT LIBRARY AREA.

THE MALL

EXISTING SURFACING, CYCLE / CAR PARKING AND PLANTING AROUND LIBRARY TO BE RETAINED

EXISTING SLIPWAY

PROPOSED PLANTERS WITH SEATING. OPPORTUNITY FOR TREE PLANTING

STRAND ROAD

EXISTING LOW WALL TO BE RELOCATED

POTENTIAL LOCATION FOR CYCLE PARKING FACILITIES

PROPOSED PLANTERS WITH SEATING AT BUS STOP LOCATION

25

27

29

19

17

21

25

27

29

POTENTIAL LOCATION FOR CYCLE PARKING FACILITIES

PROPOSED PLANTERS WITH SEATING

POTENTIAL BOLLARD LOCATIONS

PROPOSED BUFF COLOURED ASPHALT SURFACING TO SHARED CYCLE / FOOTPATH

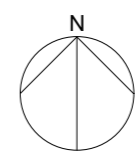
POTENTIAL LOCATION FOR CYCLE PARKING FACILITIES

DWG NO. LP-4-03

ILLUSTRATIVE EXAMPLES OF PROPOSED PUBLIC REALM ELEMENTS: SURFACING, SEATING, PLANTERS AND WALL FINISH



SITE LAYOUT LEGEND



- HIGH QUALITY SURFACING TO SEATING AREAS AND ACCESS POINTS (e.g. NATURAL STONE PAVING SLABS /SETTS)
- CONCRETE SURFACING TO BUFFER STRIP
- BUFF COLOURED ASPHALT SURFACING TO SHARED CYCLE / FOOTPATH
- EXISTING CARRIAGEWAY TO BE RETAINED
- PROPOSED PLANTERS WITH SEATING ELEMENTS
- BEVELLED KERB TO SLIPWAY ACCESS
- TACTILE PAVING (CONTROLLED CROSSING)
- TACTILE PAVING (UNCONTROLLED CROSSING)
- EXISTING GRASS/PLANTING AREA TO BE RETAINED
- PROPOSED TREE PLANTING
- EXISTING TREE TO BE RETAINED



ATKINS
Member of the SNC-Lavalin Group



Comhairle Contae
Fhine Gall
Fingal County
Council



CLIENT:
FINGAL COUNTY COUNCIL

PROJECT/DRAWING TITLE:
BALDOYLE PUBLIC REALM - SITE LAYOUT (2 OF 5)

LOCATION:
BALDOYLE

DRAWING NUMBER:
22002-CO-LP-4-02-REV-1

SCALE:

1:250@A1

DATE:
11.03.2022