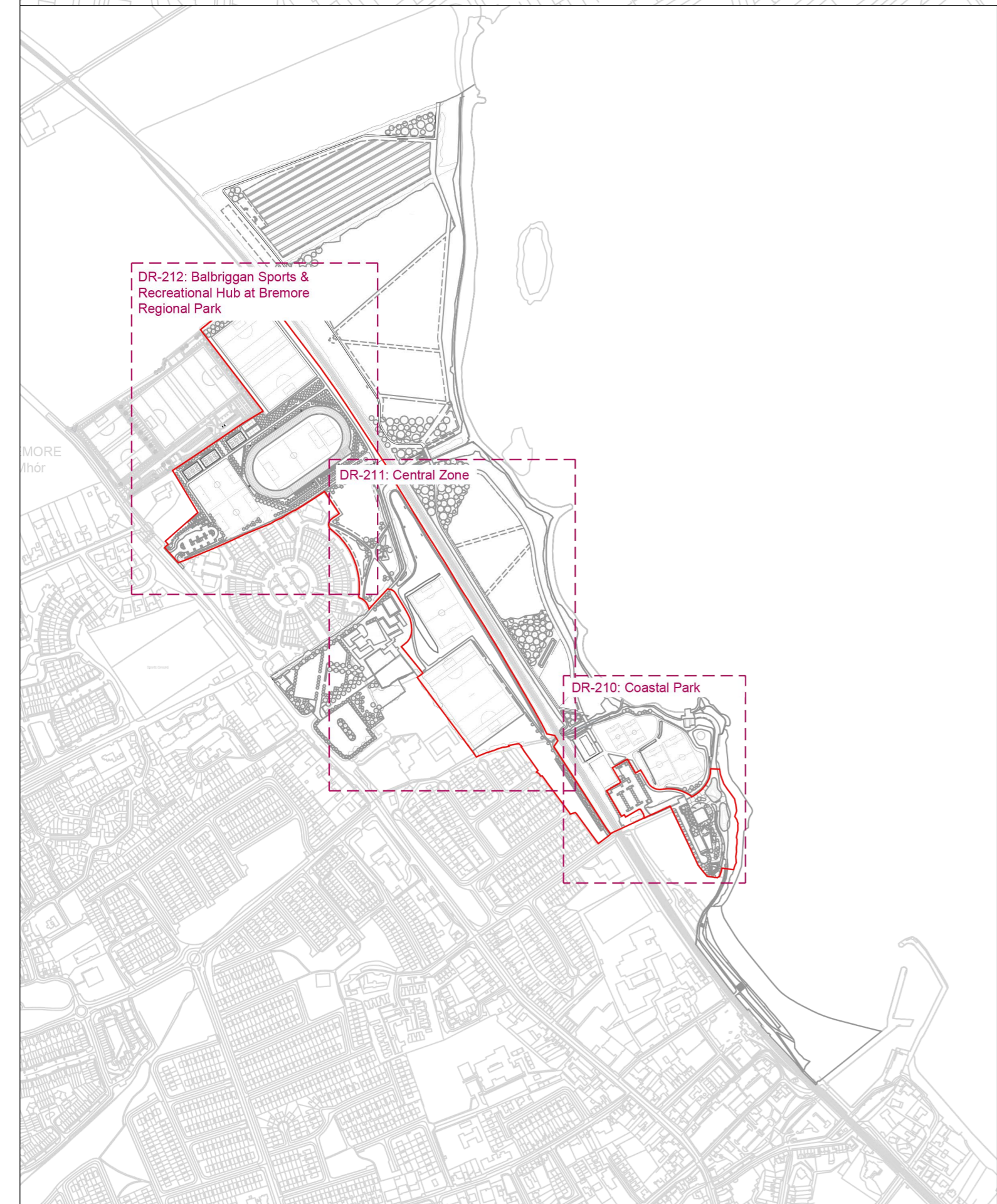




Coastal Walk Specific Objective*



This drawing is the copyright of **ait** urbanism + landscape. Unless otherwise stated all dimensions are in millimetres. Where dimensions are not given, drawings must not be scaled and the matter must be referred to the Landscape Architect. If the drawing includes conflicting details/dimensions the matter must be referred to the Landscape Architect. All dimensions must be checked on site. The Landscape Architect must be informed, by the Contractor, of any discrepancies before work proceeds.

NOTES:

DATE	REV	DESCRIPTION	DRAWN BY	CHECKED BY
-	-	-	-	-
-	-	-	-	-
-	-	-	-	-
-	-	-	-	-

<p>ait urbanism + landscape</p>	<p>3rd Floor Newmarket House, Newmarket Square, Dublin 8 Ireland t + 353 86 1739522 www.ait.ie</p>	<p>ISSUE STATUS: PART 8 APPLICATION</p>	
	<p>CLIENT: Fingal County Council</p> <p>PROJECT: Bremore Regional Park Development Project</p> <p>DRAWING: Park Development Context Plan (Non-Statutory)</p>	<p>DRAWING NO: 19FG02-DR-200</p> <p>REVISION: -</p> <p>DRAWN BY: AD</p> <p>1st ISSUE: 10.03.2023</p> <p>PROJECT NO: 19FG02</p> <p>SCALE: 1:2500*</p> <p>SHEET SIZE: A1</p> <p>CHECKED BY: RJ</p>	

*NOTE: Overall Landscape Plan scale has been reduced to 1:2500 due to the large size of the site.