

Lanesborough Park Development Project

for Fingal County Council
March 2021

Preliminary Design Proposals

Comhairle Contae
Fhine Gall
Fingal County
Council

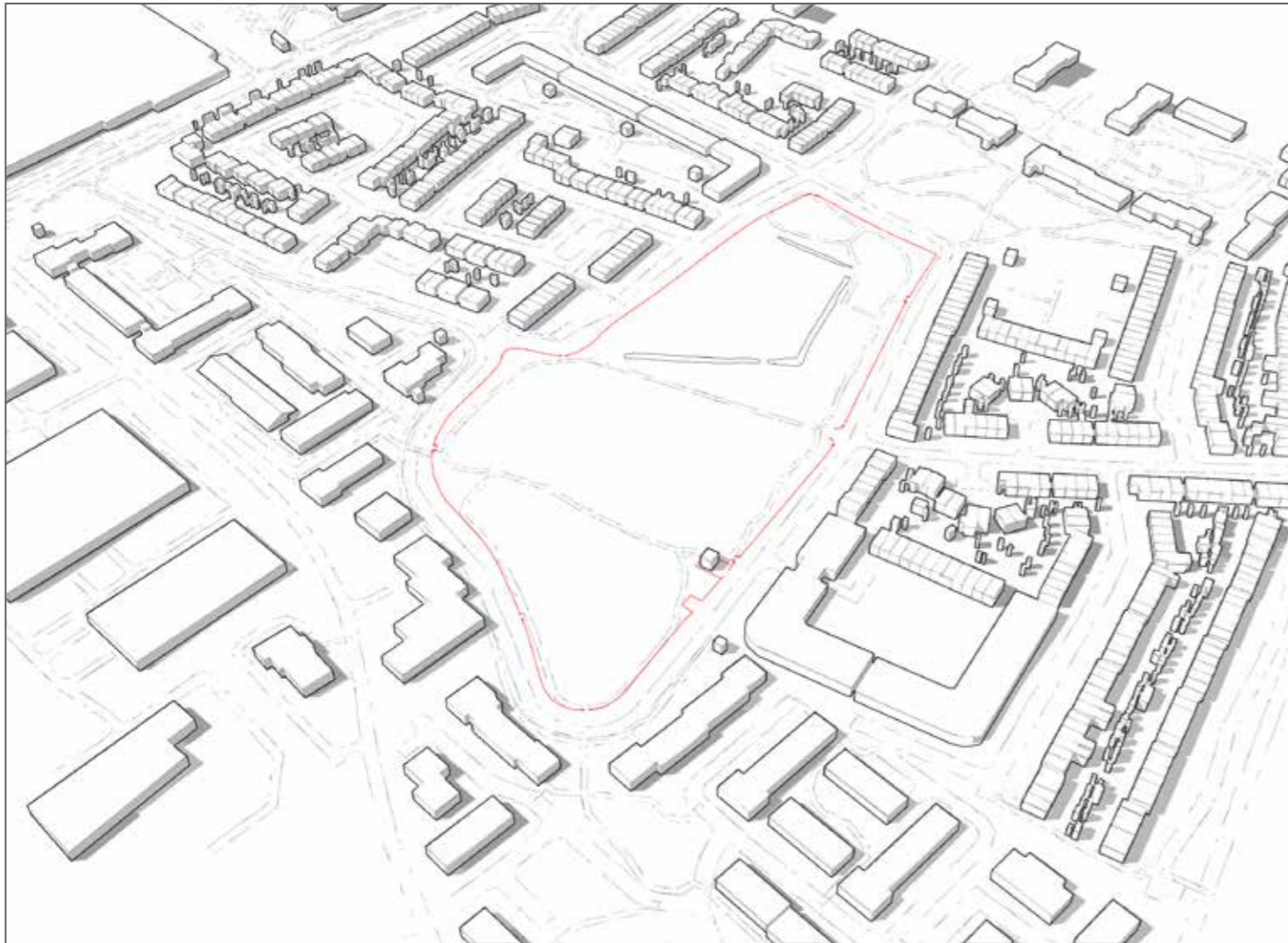


ait
urbanism + landscape

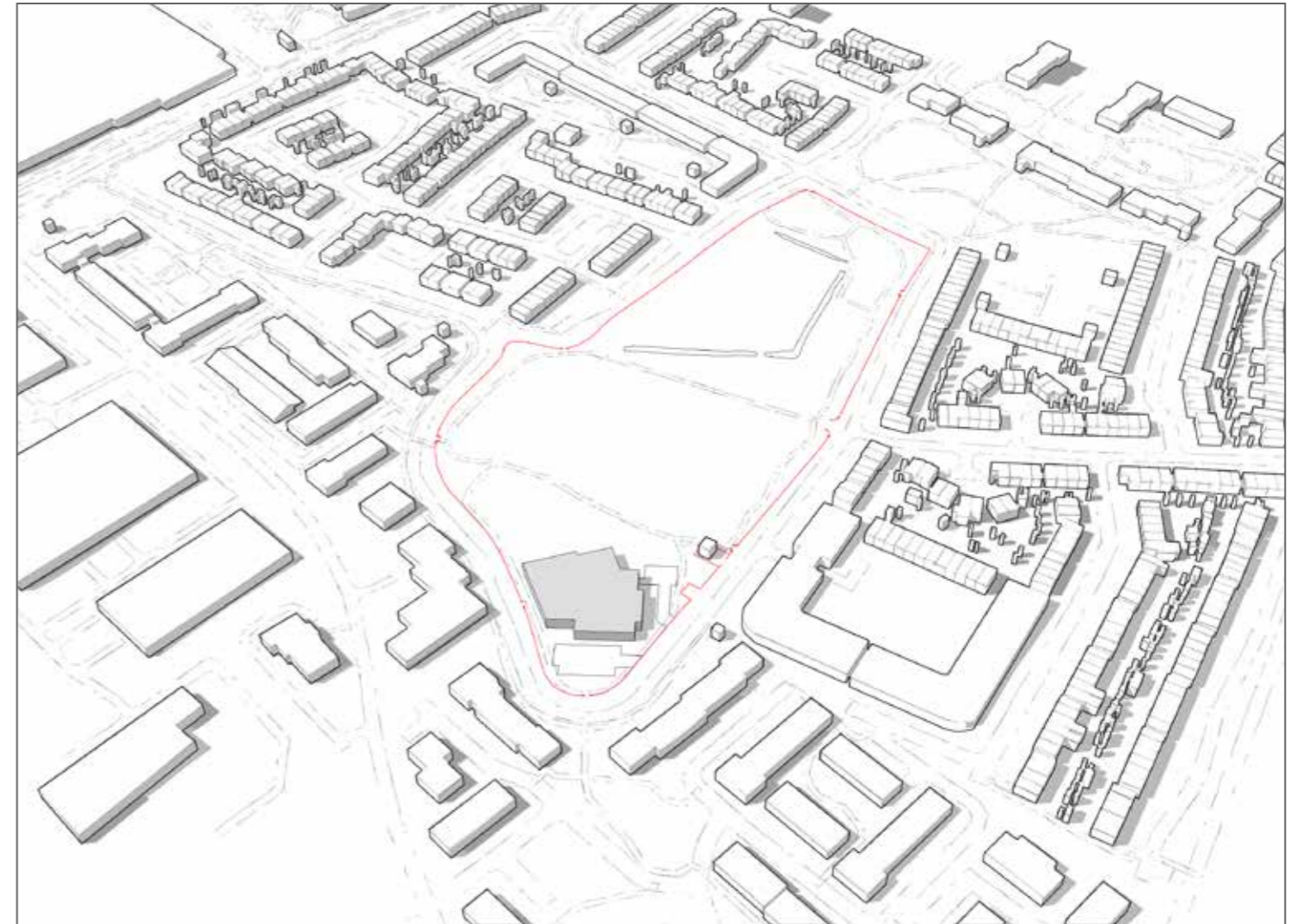




Park Building Blocks



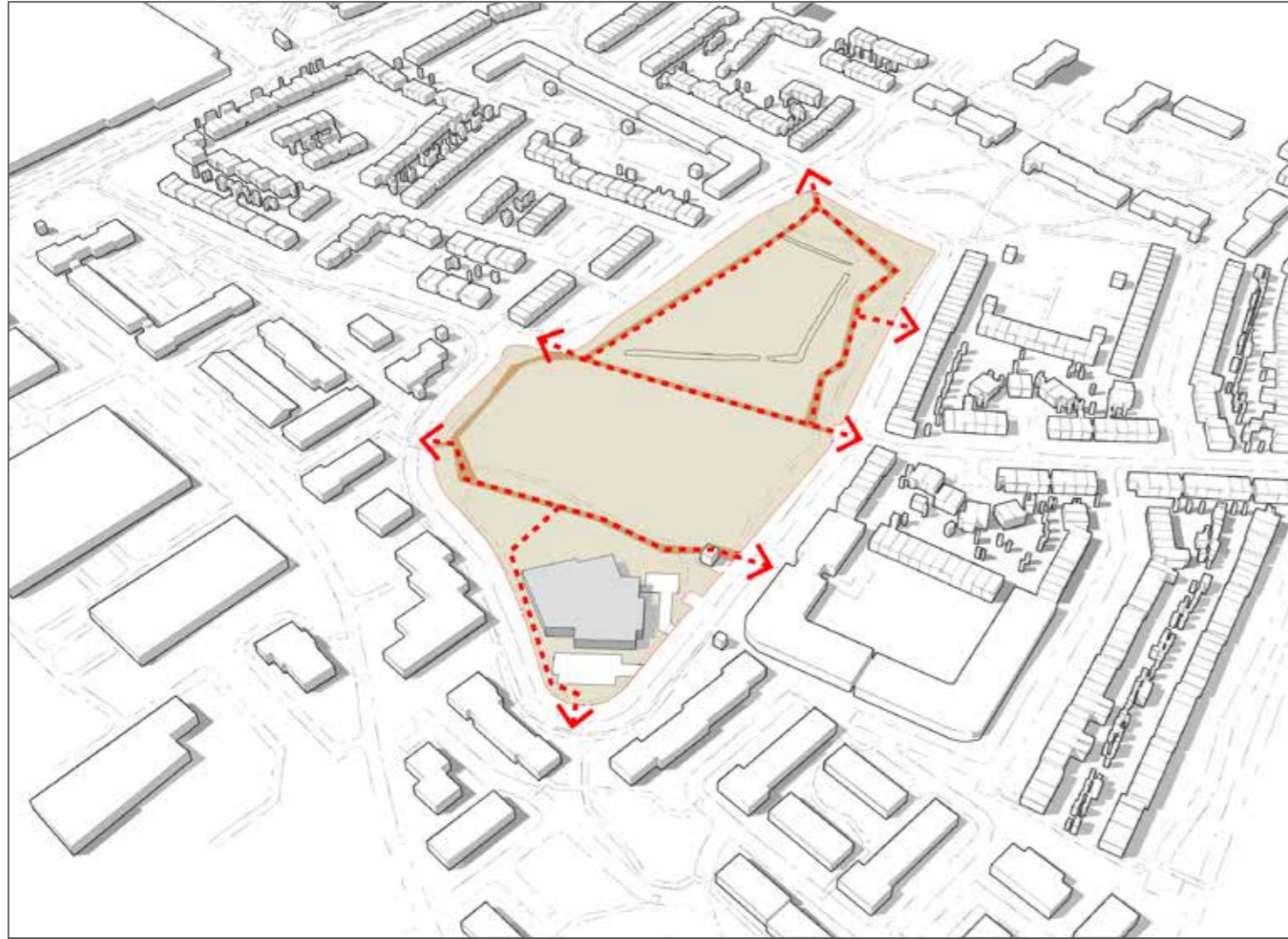
Existing Context - Simplified & Trees Removed



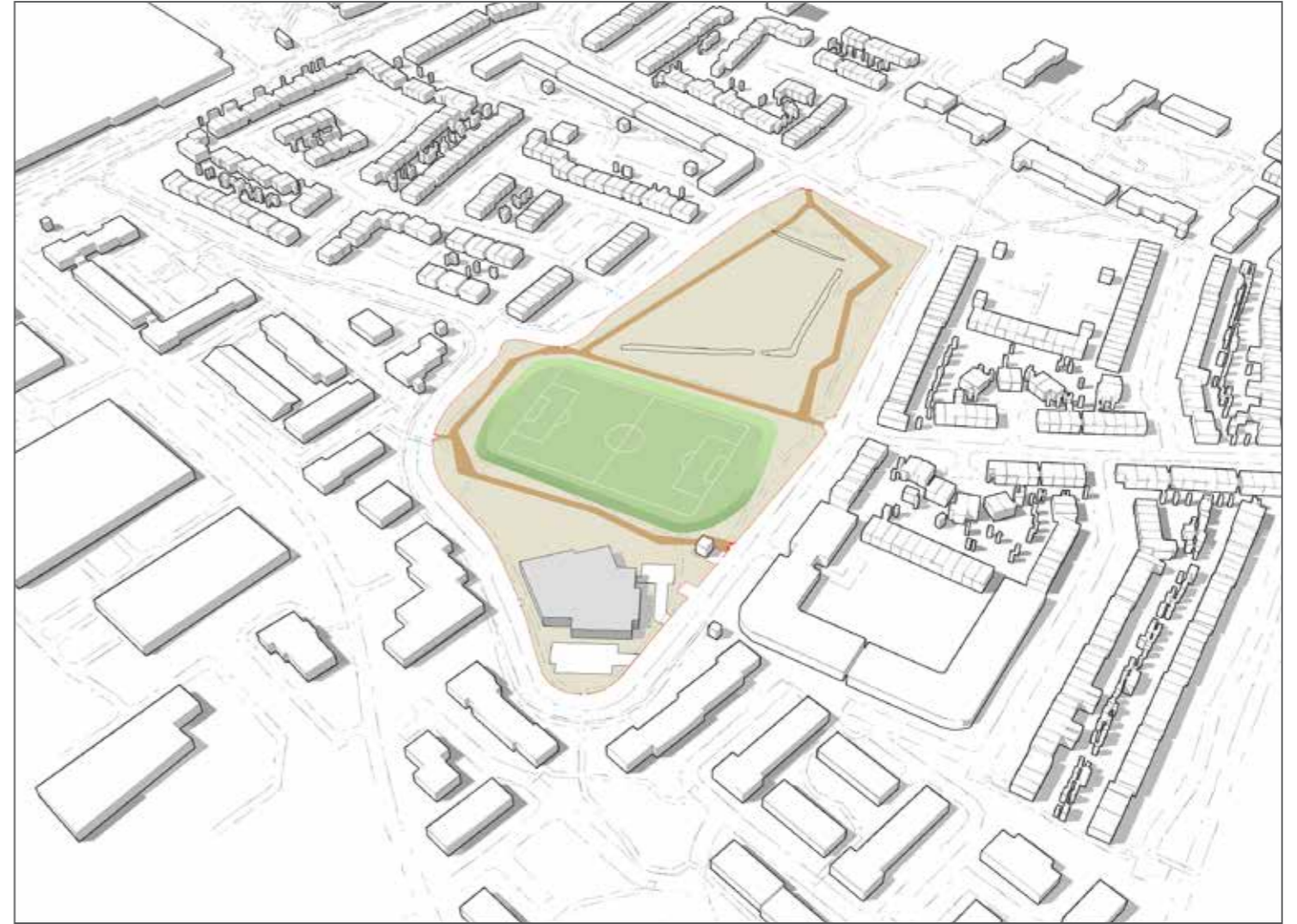
Community Centre - subject to a design by others



Park Building Blocks



Primary Circulation



Formalised Sports Facilities

Park Building Blocks



Dispersed Play Spaces



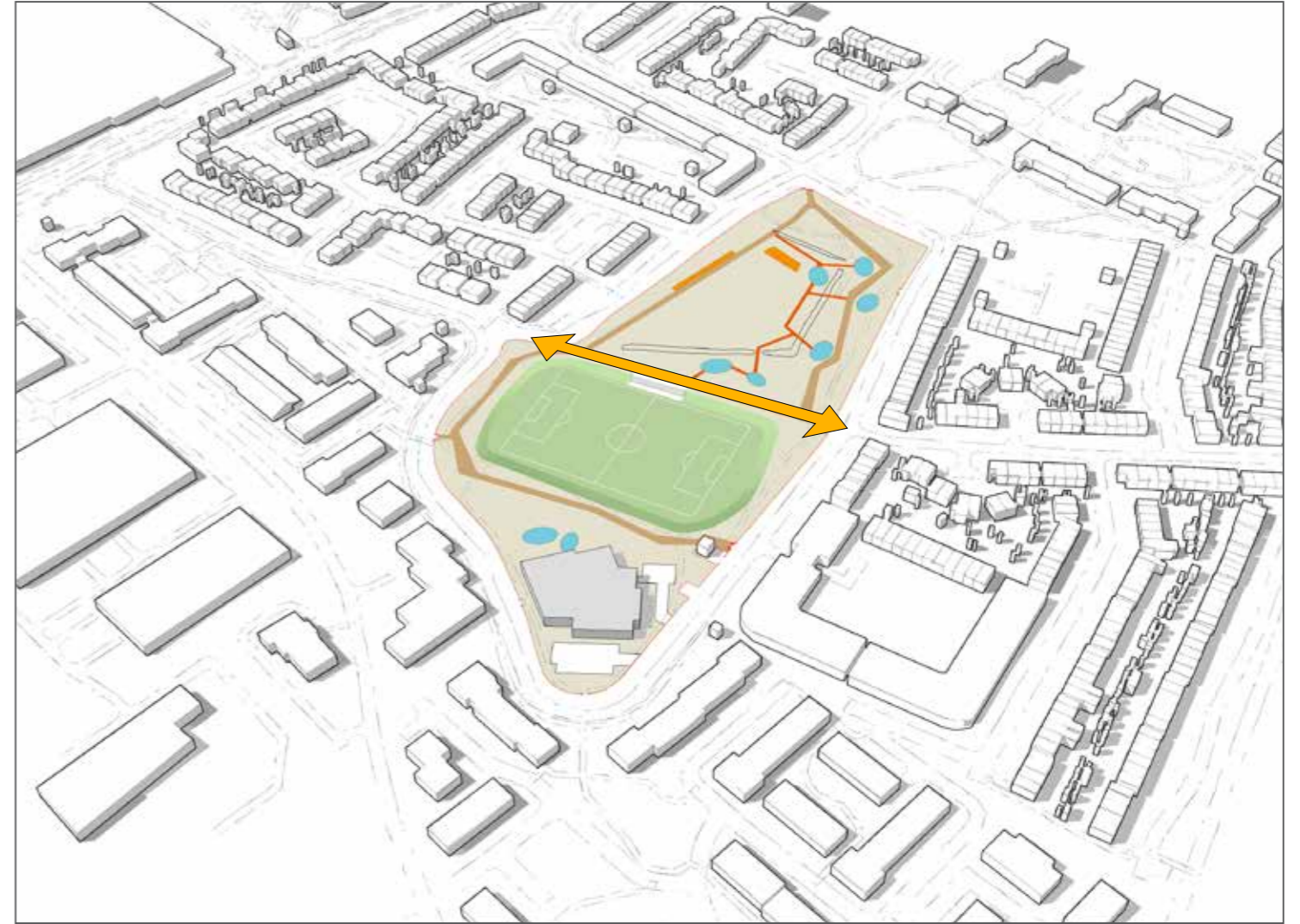
Secondary Circulation



Park Building Blocks



Fitness Activities - Trim Trail Equipment



Viewing Area at Sports Pitch and Central Avenue

Park Building Blocks



Community Gardens



Historic hedgerow retained and perimeter areas improved for increased ecological capacity and biodiversity

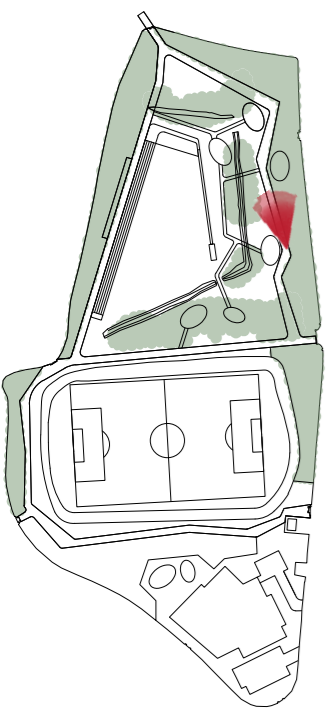


Park Building Blocks





Design Concepts



Design Concepts - Park Circulation

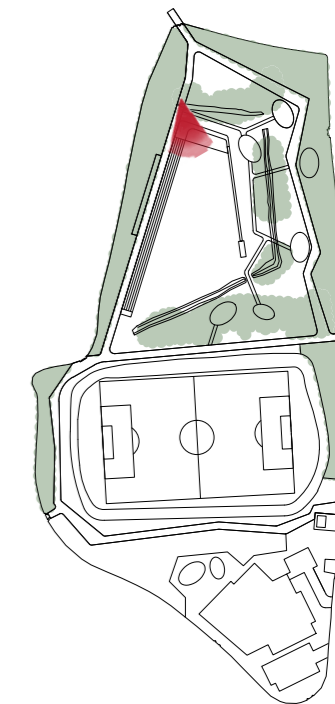


Commentary

The parks footpaths are too narrow and poorly defined. The primary circulation in the park should be bold in character and wide enough that people can pass comfortably, whether on foot or on bicycle. The path can be used to create a contemporary aesthetic - wide edging creates strong definition and emphasises bold geometries. A simple asphalt surfacing is both cost effective, robust and easily maintained, it also provides contrast to the path edges.

Play areas are dispersed alongside the primary circulation route and are of a natural aesthetic that blends easily with the park surroundings. Children are given the opportunity to explore the whole park, exercising as they move from one play space to the next.





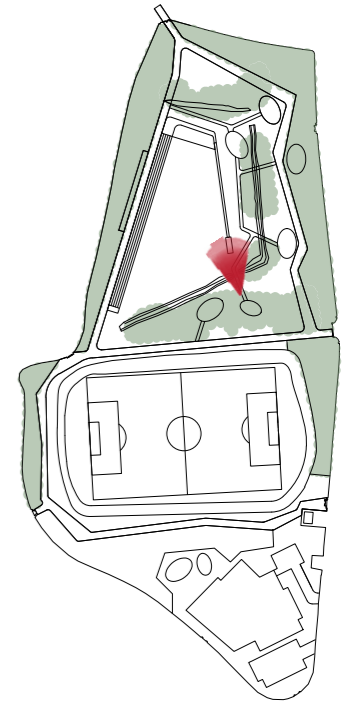
Design Concepts - Fitness & Activity

Commentary

The park contains large spaces that could provide opportunities for athletic pursuits. This could include the provision of trim-trail equipment to be used for resistance and cardio exercises. The equipment could be dispersed in similarity with childrens play areas so that all park areas are visited throughout the day.

Metre markers could be placed at intervals on the primary perimeter path for people jogging or walking to set distances .



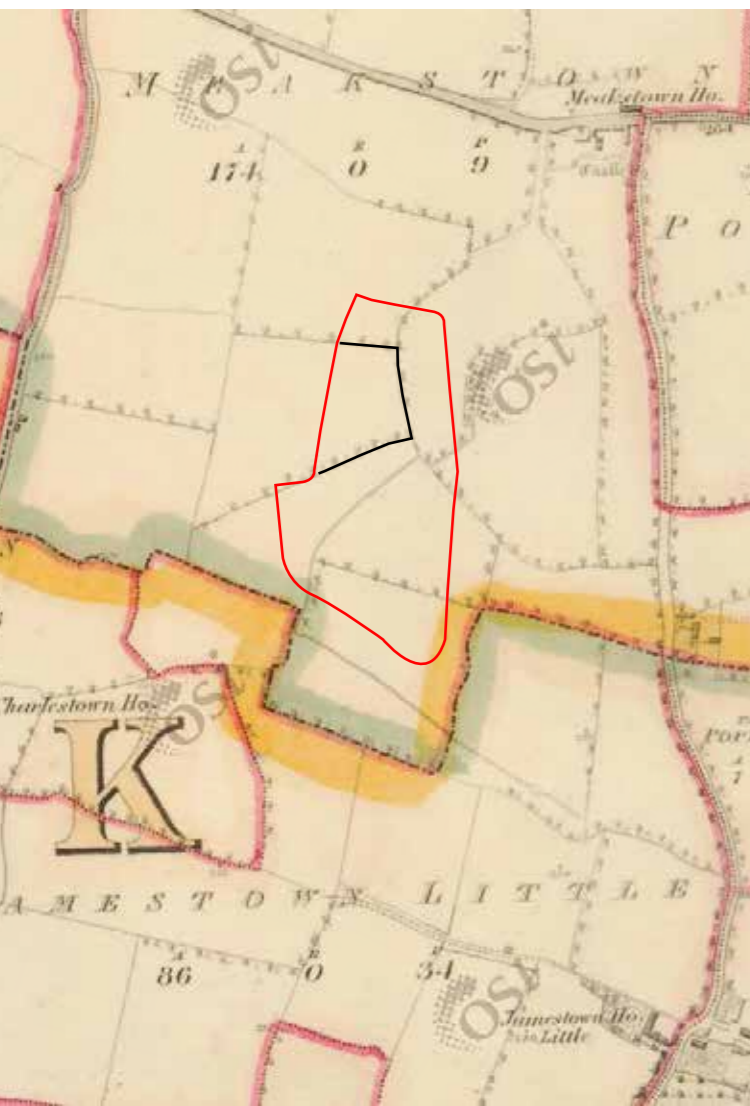
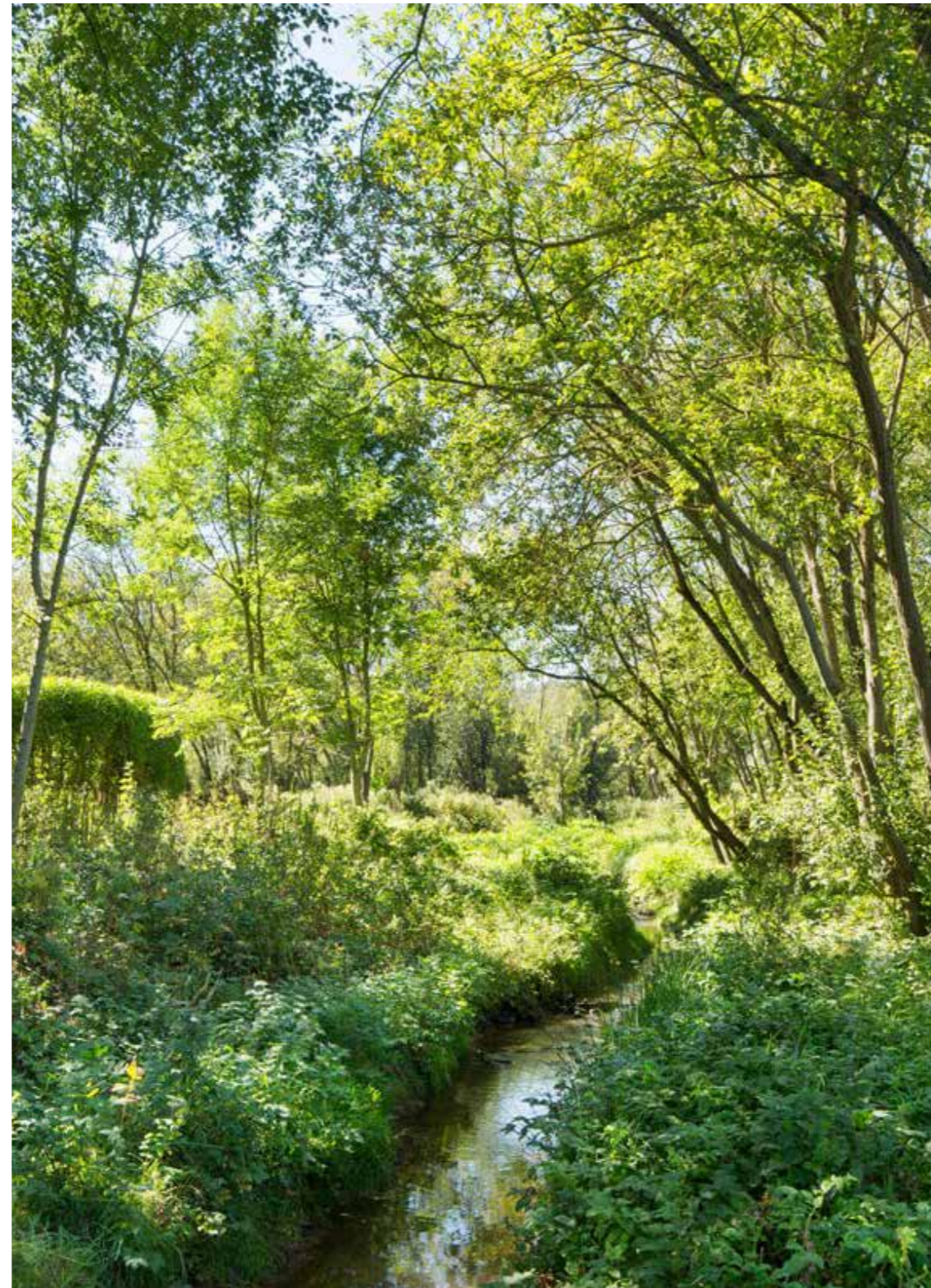


Commentary

The remnants of an old hedgerow and ditch are present in the park - the same hedge alignment can be identified on Historic mapping from the 19th century. It is an interesting feature that could be enhanced for ecology and play. We would suggest thinning out some of the shrub growth to expose the ditch as a topographical feature, perhaps planting additional trees along it to begin a linear woodland.

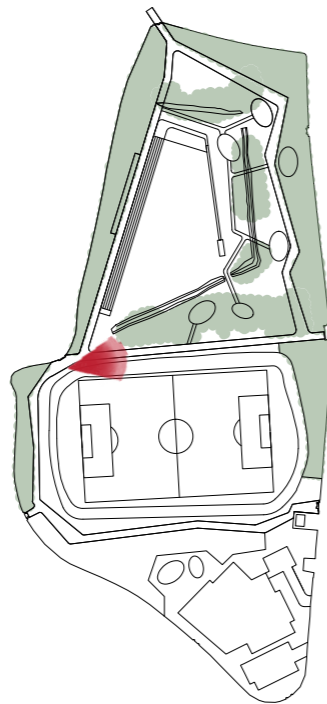
The ditch could be bridged at one or two locations to join up with a secondary circulation route that connects the dispersed play areas. This would heighten the sense of adventure for children moving from one space to the next.

For ecological benefit, we propose extending an un-mown margin from the hedgerow outwards. This expands habitats and enhances landscape diversity by re-wilding certain park areas.





Design Concepts - Park Avenue & Sports Pitch Viewing Area





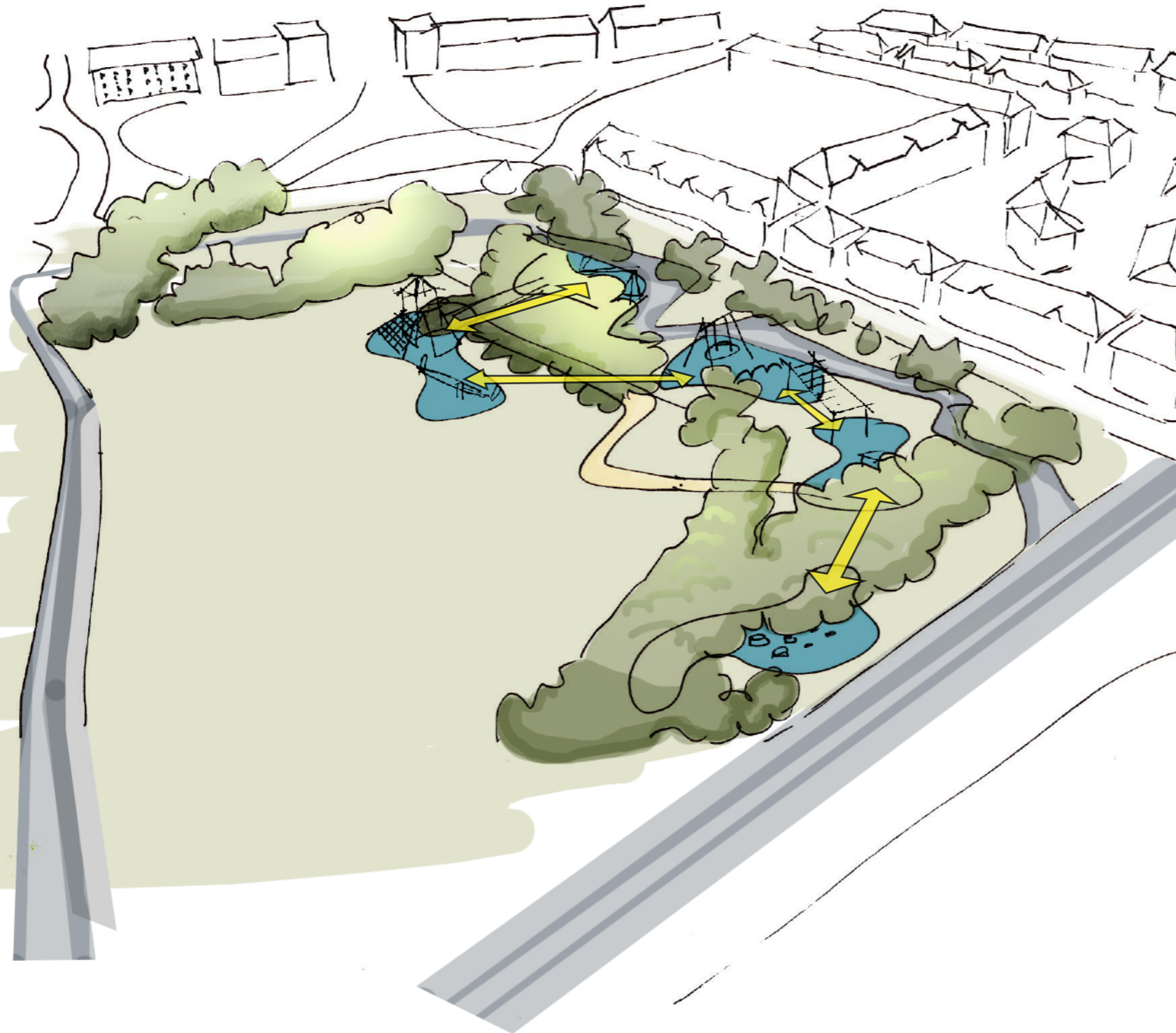
Commentary

We propose to define a primary avenue that runs in an east-west direction through the centre of the park. The avenue borders the sports pitch and so there would be an opportunity to create a terraced seating area alongside it for watching matches, or an interesting place to sit generally. Seating, lighting, cycle stands etc. would all be provided for convenience and safety. The central avenue may be wider than other routes such that it could accommodate market stalls, were these events to take place.





Design Concepts - Playground Ideas & Strategy



Commentary

We propose a series of linked play-spaces in the northern section of the park. The play areas would follow the concept of nature play and so use natural composing elements, objects from nature and predominantly bark mulch surfacing in place of conventional rubberised surfaces. These dispersed playgrounds encourage children to explore larger areas and increase the potential for social contact, exercise and a sense of adventure.



Playground spaces could be organised around themes such as adventure, physical activity, water, sensory etc. Playgrounds will also be designed for inclusivity so that all users are given play opportunities in each space. Bench seating will also be provided in locations where parents can watch on in comfort .





Design Concept - Sensory Garden





DESIGNATED DOG-OFF-LEASH
AREA

FITNESS AREA

NATIVE MEADOW AREAS

EXISTING HEDGEROW DITCH
Re-purposed as a dry riverbed
play feature

PLAYGROUND

FITNESS AREA

TERRACE SEATING AREA
Subject to agreement with
utility companies

SPORTS PITCH

COMMUNITY GARDEN AND SENSORY
GARDEN

COMMUNITY CENTRE
Footprint indicative, community
centre subject to separate design
and planning



PRIMARY/PERIMETER PATH - SUBSTANTIALLY WIDENED PATH SURFACED IN ASPHALT AND DECORATIVE CONCRETE



SECONDARY WOODLAND PATH - COMPACTED GRAVEL SURFACE



WOODLAND AREAS - A LOW WOODLAND FIELD LAYER WILL BE ENCOURAGED FOR BIODIVERSITY AND VISUAL AMENITY



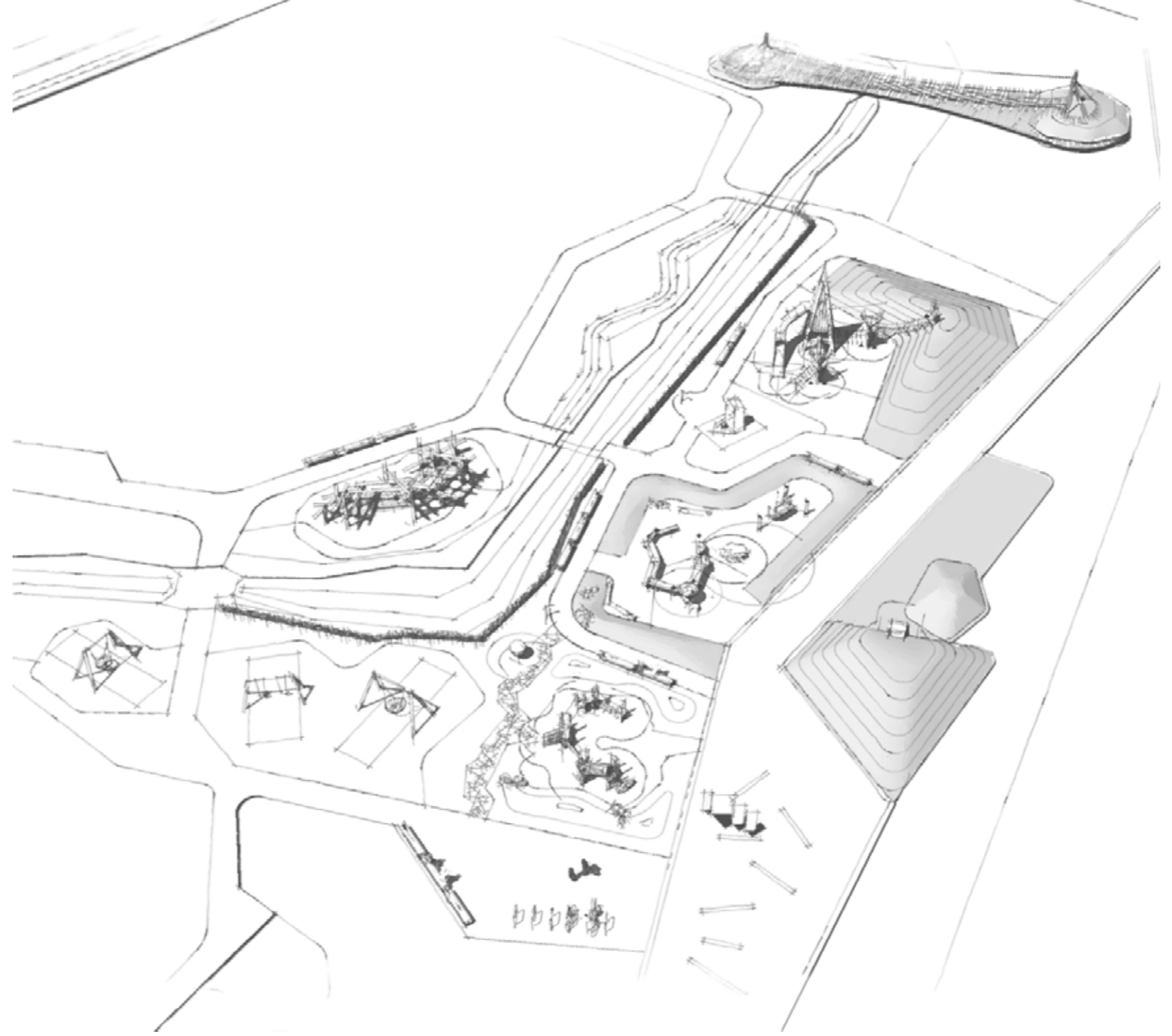
PARK PERIMETER - THIS AREA WILL BE MANAGED FOR THE ENCOURAGEMENT OF BIODIVERSITY AND VISUAL AMENITY












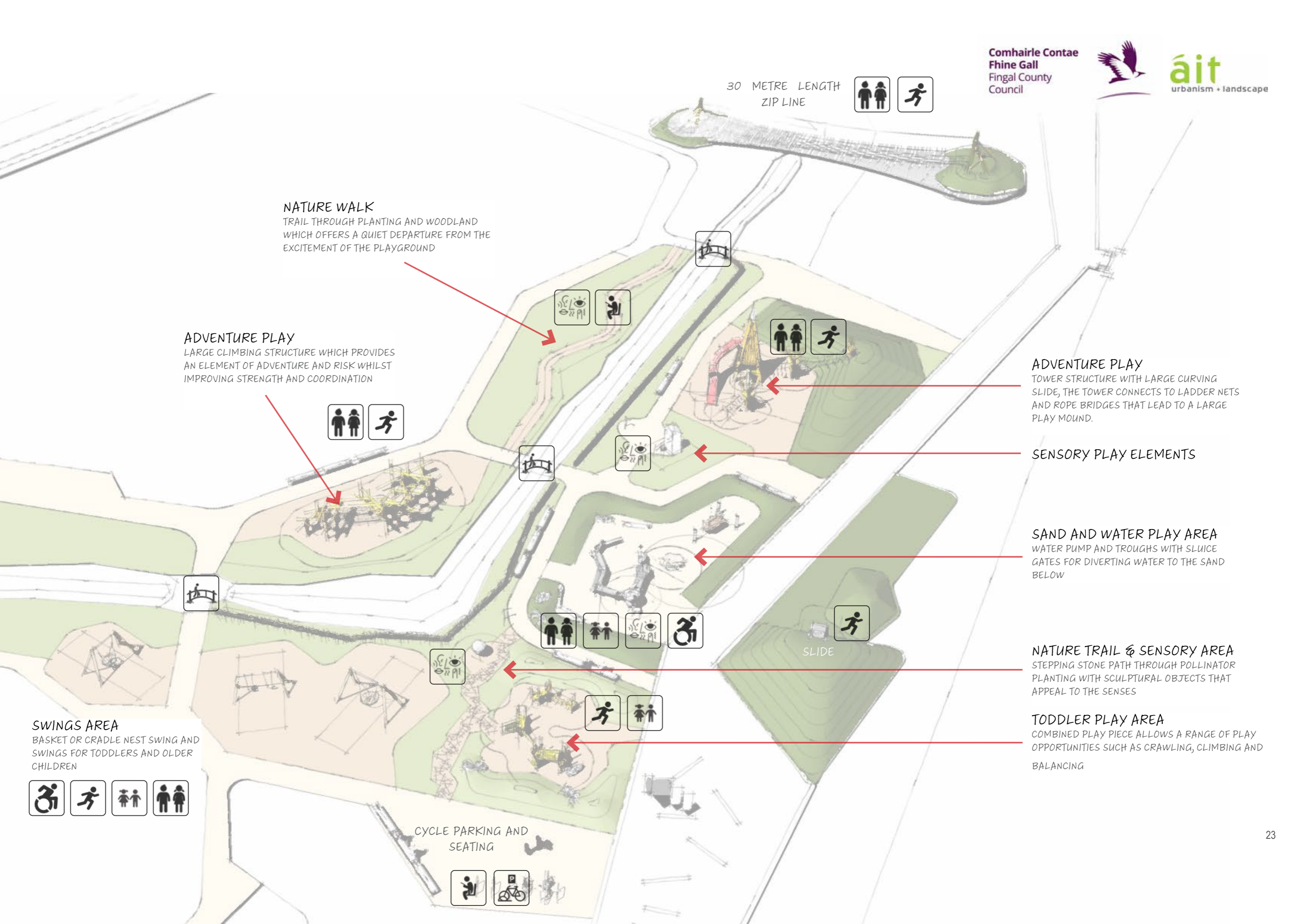
PROPOSED ADDITIONAL TREE PLANTING, EXISTING TREES TO BE RETAINED IN THE MAJORITY

Lanesborough
Park

Preliminary Design



- | | | |
|---|---|---|
|  Active Play |  Play for older children |  Cycle Parking |
|  Universal Play & Access |  Sensory Play |  Bridge over ditch |
|  Toddler Play |  Seating/rest areas |  Community Garden |



30 METRE LENGTH
ZIP LINE



NATURE WALK
TRAIL THROUGH PLANTING AND WOODLAND
WHICH OFFERS A QUIET DEPARTURE FROM THE
EXCITEMENT OF THE PLAYGROUND

ADVENTURE PLAY
LARGE CLIMBING STRUCTURE WHICH PROVIDES
AN ELEMENT OF ADVENTURE AND RISK WHILST
IMPROVING STRENGTH AND COORDINATION



ADVENTURE PLAY
TOWER STRUCTURE WITH LARGE CURVING
SLIDE, THE TOWER CONNECTS TO LADDER NETS
AND ROPE BRIDGES THAT LEAD TO A LARGE
PLAY MOUND.

SENSORY PLAY ELEMENTS

SAND AND WATER PLAY AREA
WATER PUMP AND TROUGHS WITH SLUICE
GATES FOR DIVERTING WATER TO THE SAND
BELOW

NATURE TRAIL & SENSORY AREA
STEPPING STONE PATH THROUGH POLLINATOR
PLANTING WITH SCULPTURAL OBJECTS THAT
APPEAL TO THE SENSES

TODDLER PLAY AREA
COMBINED PLAY PIECE ALLOWS A RANGE OF PLAY
OPPORTUNITIES SUCH AS CRAWLING, CLIMBING AND
BALANCING

SWINGS AREA
BASKET OR CRADLE NEST SWING AND
SWINGS FOR TODDLERS AND OLDER
CHILDREN



CYCLE PARKING AND
SEATING





L
nesborough
Park



CONCEPT PERSPECTIVE



Lanesborough
Park

CONCEPT PERSPECTIVE



Lanesborough
Park



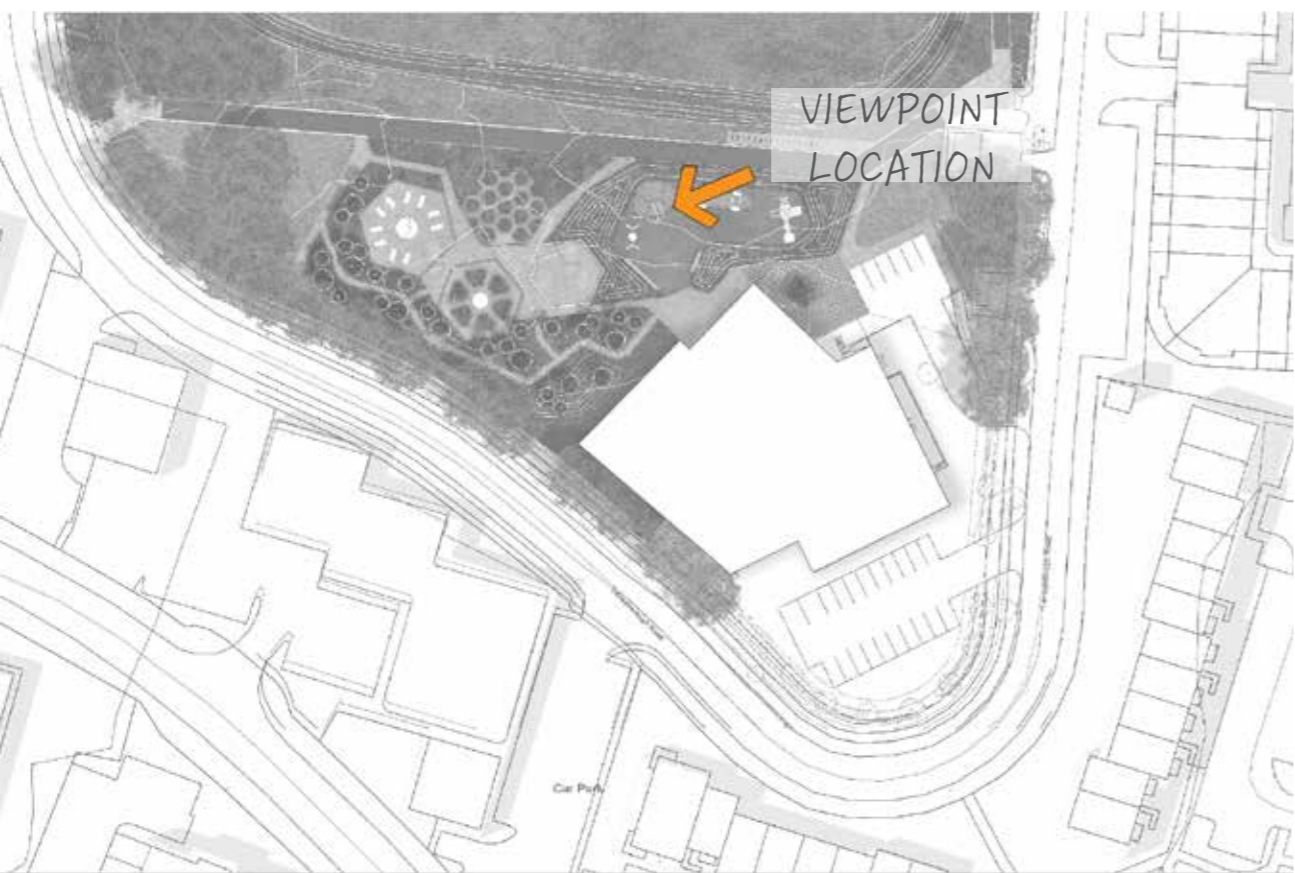
SENSORY GARDEN TRAIL

STORAGE SHED

COMMUNITY GARDEN
RAISED PLANTERS AND
VEGETABLE PLOTS ENCLOSED
BY TIMBER SLEEPER WALLS
AT SEATING HEIGHT

TODDLER PLAY AND YOUNG
CHILDREN PLAY AREA

CONCEPT PERSPECTIVE



L^{inesborough}
Park





3rd Floor
Newmarket House
Newmarket Square
Dublin 8

E: hello@ait-place.ie
w: www.ait-place.ie