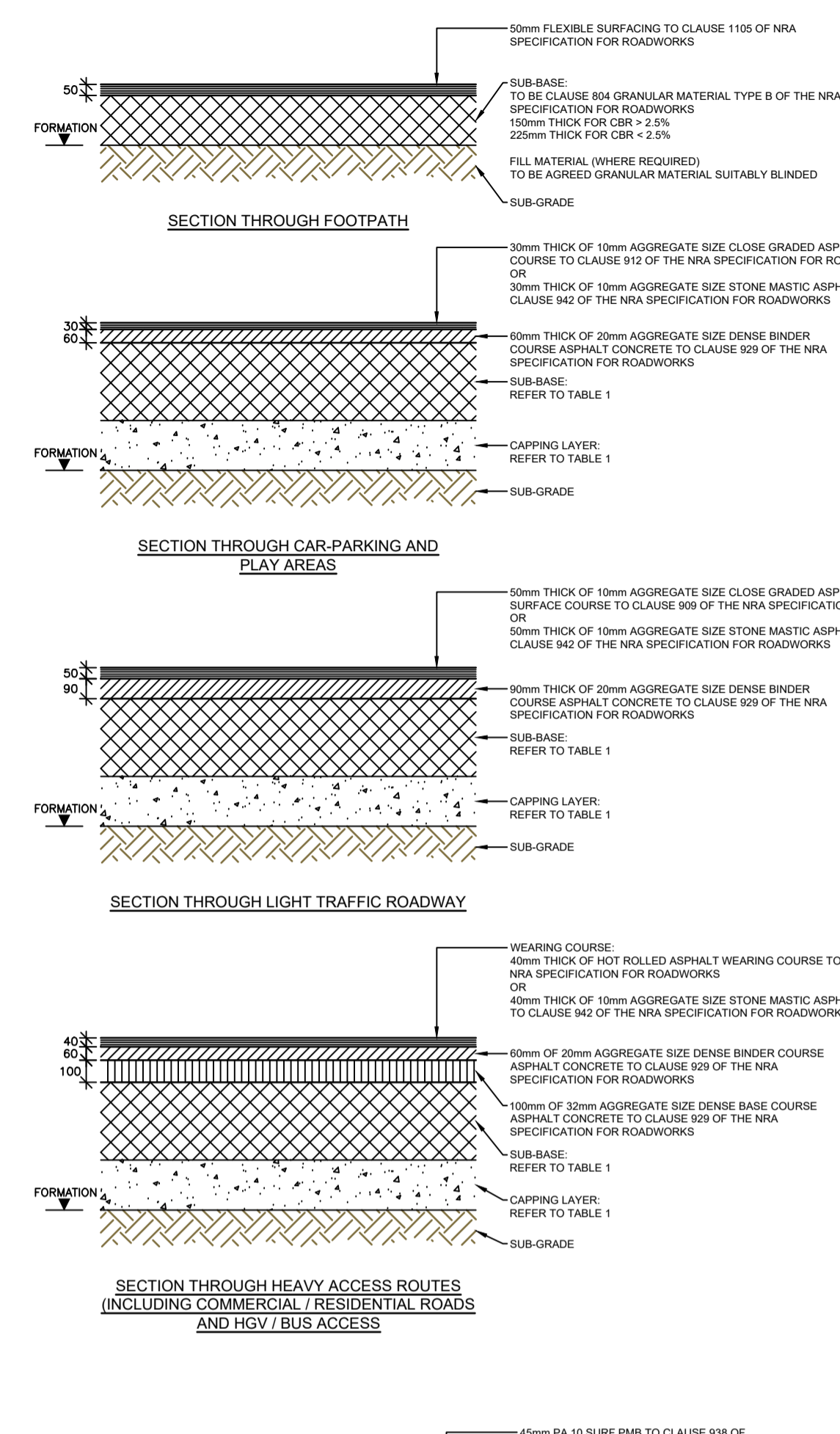


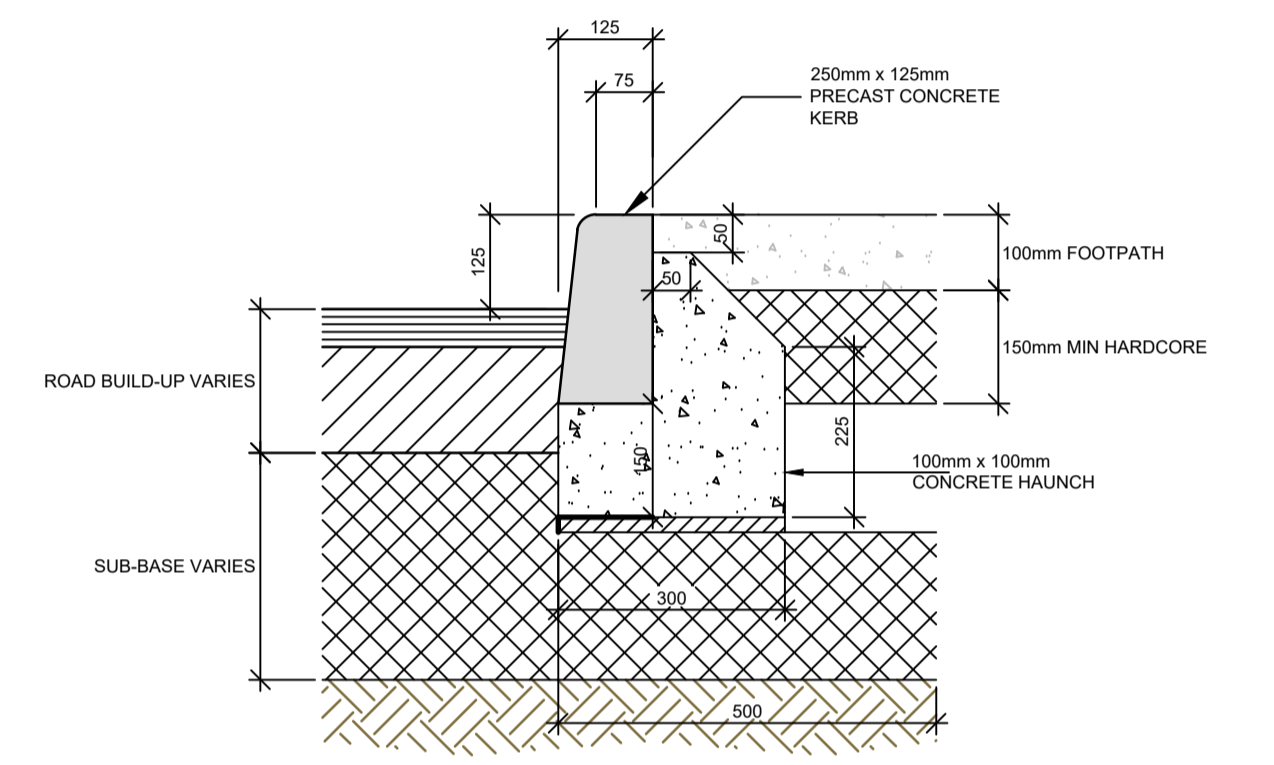
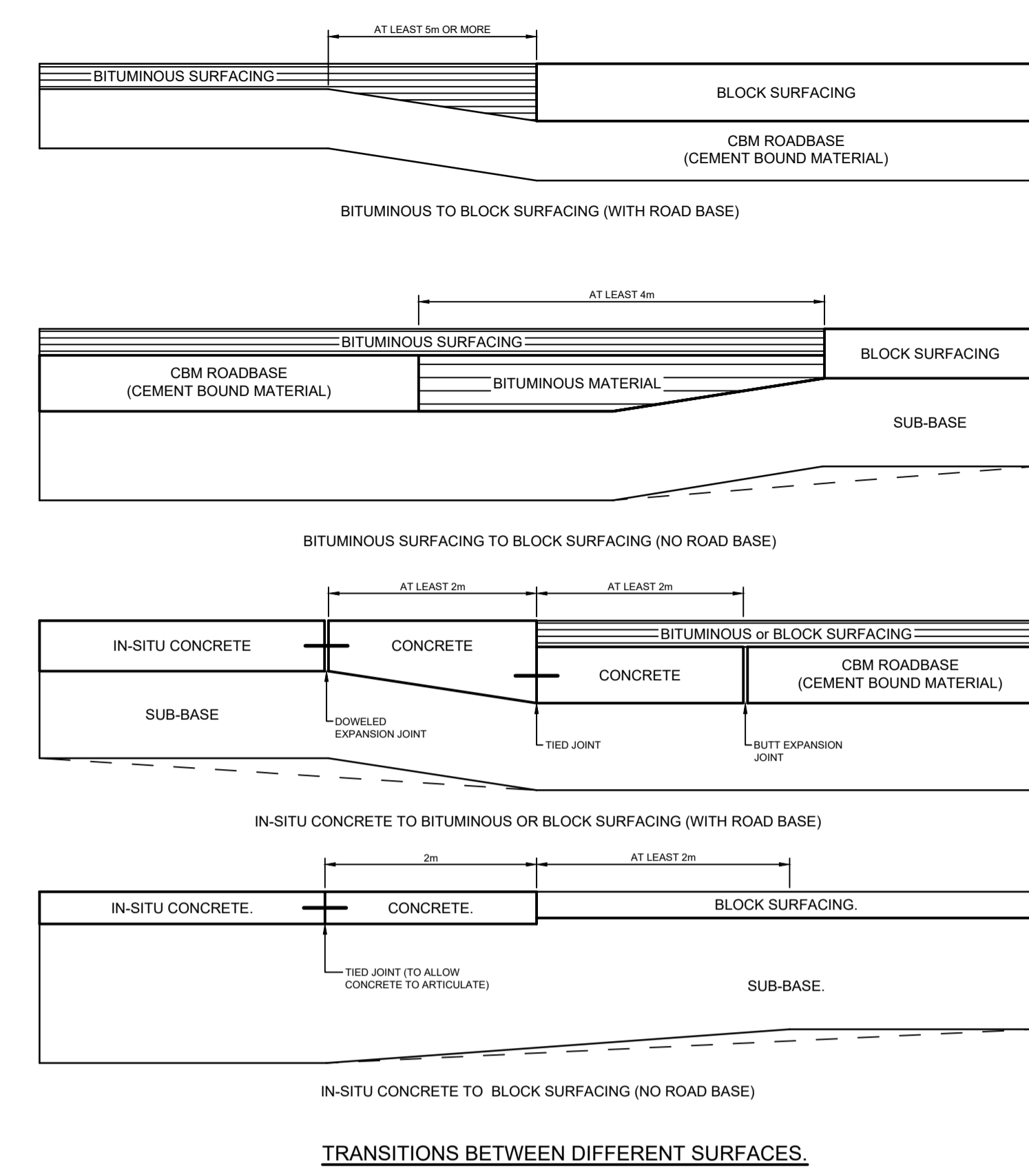
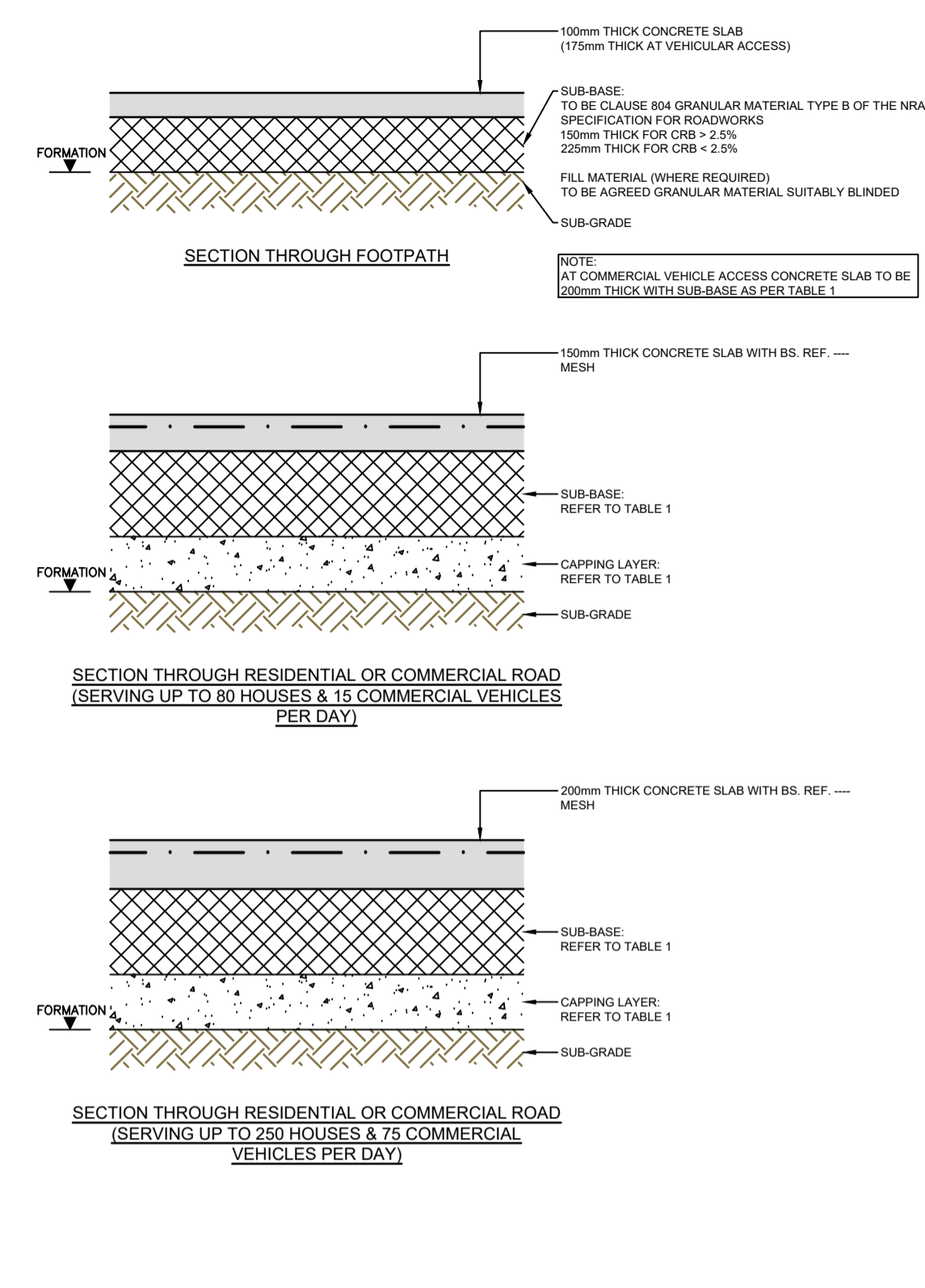
NOTES

1. THIS DRAWING TO BE READ IN CONJUNCTION WITH RELEVANT ARCHITECTS AND ENGINEERS DRAWINGS.
2. FIGURED DIMENSIONS ONLY TO BE TAKEN FROM THIS DRAWING. ALL DIMENSIONS TO BE CHECKED ON SITE. ENGINEER TO BE INFORMED IMMEDIATELY OF ANY DISCREPANCIES BEFORE WORK PROCEEDS.

**BITUMINOUS SURFACING**



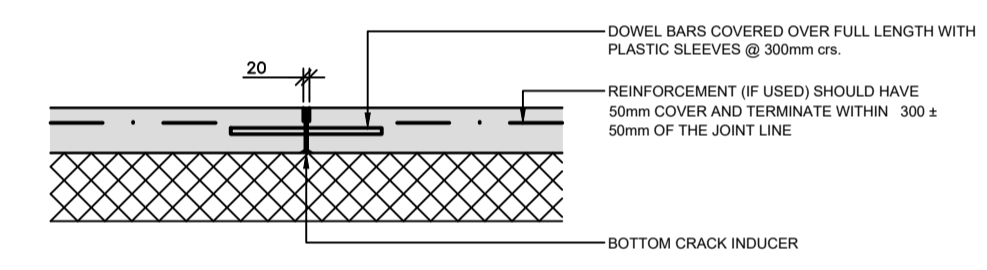
**INSITU-CONCRETE SURFACING**



**TRANSVERSE JOINT SPACING FOR CONCRETE PAVING**

	SLAB THICKNESS (mm)	MAXIMUM SPACING (m)
UNREINFORCED CONCRETE	100 - 150	3
	151 - 175	4
	176 - 200	4.5
	201 - 250	5
REINFORCE CONCRETE	REINFORCEMENT LONG MESH TO BS4483	MAXIMUM SPACING (m) ANY SLAB THICKNESS
	C283	15
	C385	20
	C503	25

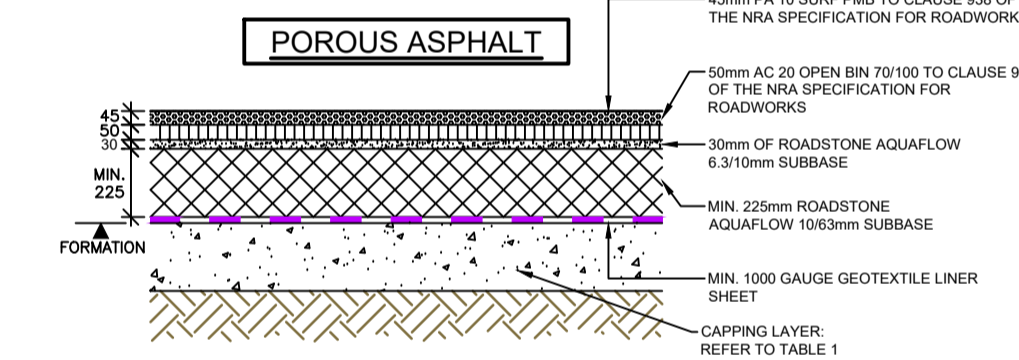
NOTE: THE ABOVE SPACINGS APPLY TO DOWELLED TRANSVERSE CONTRACTION JOINTS. IN LARGE PAVING EVERY FOURTH LONGITUDINAL JOINT SHALL BE CONSTRUCTED AS A CONSTRUCTION JOINT USING SLEEVED DOWEL BARS INSTEAD OF TIE BARS TO ACCOMMODATE EXPANSION. A DOWELLED EXPANSION JOINT SHOULD REPLACE THE CONTRACTION JOINT AT INTERVALS OF 60-70m.



NOTE (1) GROOVE FORMED BY VIBRATING A NARROW STRIP INTO THE PLASTIC CONCRETE. THIS STRIP IS THEN REMOVED AND REPLACED BY A TEMPORARY FILLER. ALTERNATIVELY A PREFORMED SEALING STRIP CAN BE INSERTED INTO THE PLASTIC CONCRETE ACTING AS BOTH TOP CRACK-INDUCER AND TEMPORARY JOINT. THE TOP OF THE GROOVE IS LATER WIDENED BY SAWING TO 25mm AND THEN SEALED.

NOTE (2) THE COMBINED DEPTH OF THE TOP GROOVE AND BOTTOM CRACK-INDUCER SHOULD BE BETWEEN A QUARTER AND A THIRD OF THE SLAB DEPTH. ALTERNATIVELY A DEEP SURFACE GROOVE CAN BE SAWN TO A DEPTH BETWEEN A QUARTER AND A THIRD OF THE SLAB DEPTH AND THE BOTTOM CRACK-INDUCER OMITTED. THIS IS THE PREFERRED OPTION.

NOTE (3) FOR CONCRETE SLABS UP TO 230mm DEEP THE DOWEL BARS SHOULD BE 20mm DIAMETER AND 500mm LONG. ABOVE THIS DEPTH THE BARS SHOULD BE 25mm DIAMETER AND 600mm LONG.

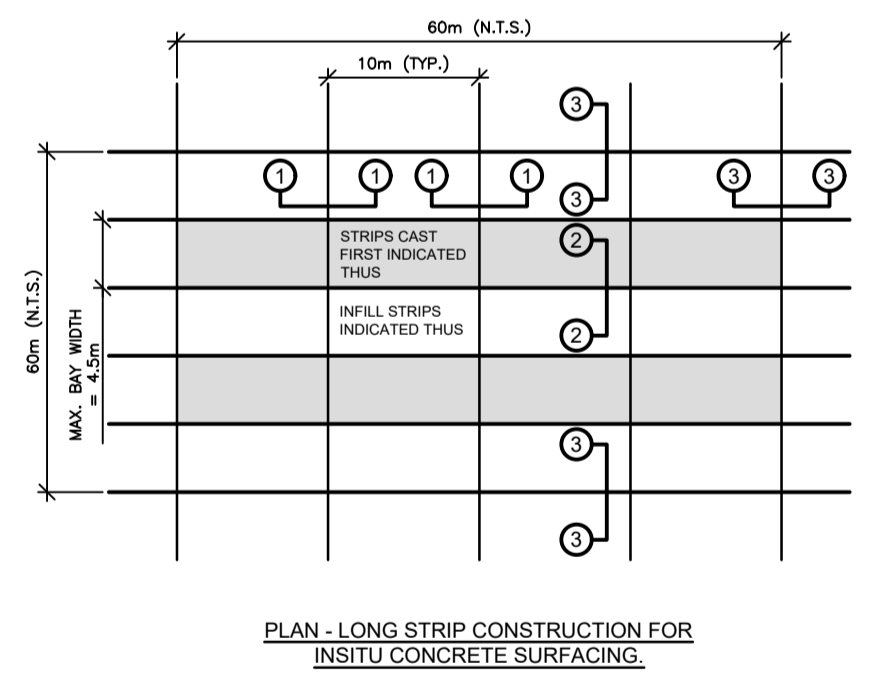


SECTION THROUGH POROUS ASPHALT CAR PARKING & PLAY AREAS

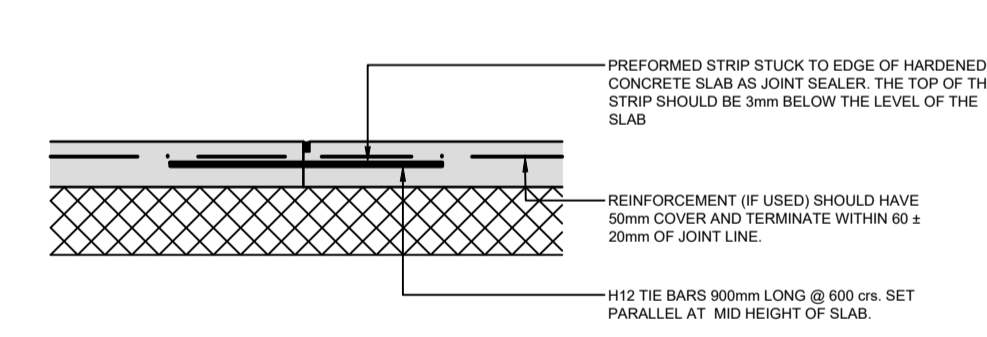
**TABLE 1**

SUB-GRADE	CBR %	SUB-BASE THICKNESS OPTION A	CAPPING LAYER + SUB-BASE THICKNESS OPTION B
<2	-	-	600 + 225
2 TO 2.9	400	400	350 + 225
3 TO 4.9	325	350	350 + 225
5 TO 6.9	250	250	150 + 225
7 OR MORE	225	225	- + 225

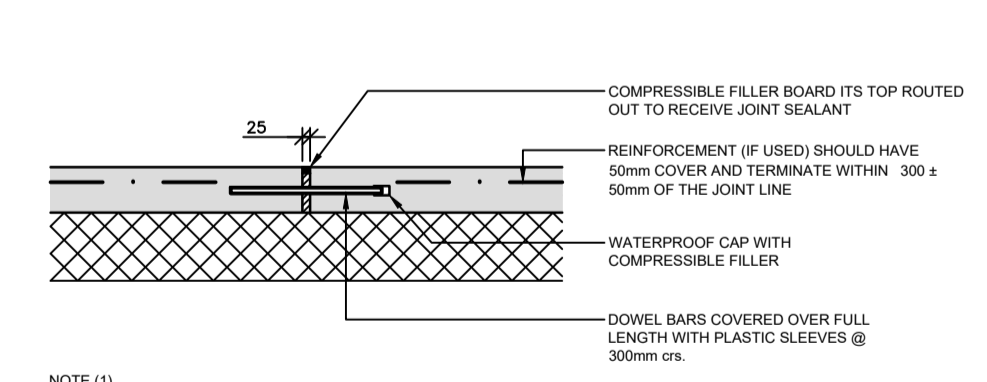
NOTE: OPTION 'A' = CLAUSE 804 GRANULAR SUB-BASE MATERIAL, TYPE B TO THE NRA SPECIFICATION FOR ROADWORKS. OPTION 'B' = 225mm THICK CLAUSE 804 GRANULAR SUB-BASE MATERIAL, TYPE B OR CLAUSE 815 CLASS #1 OR #2 MATERIAL TO THE NRA SPECIFICATION FOR ROADWORKS.



(1-1) CONTRACTION JOINT (C.J.)

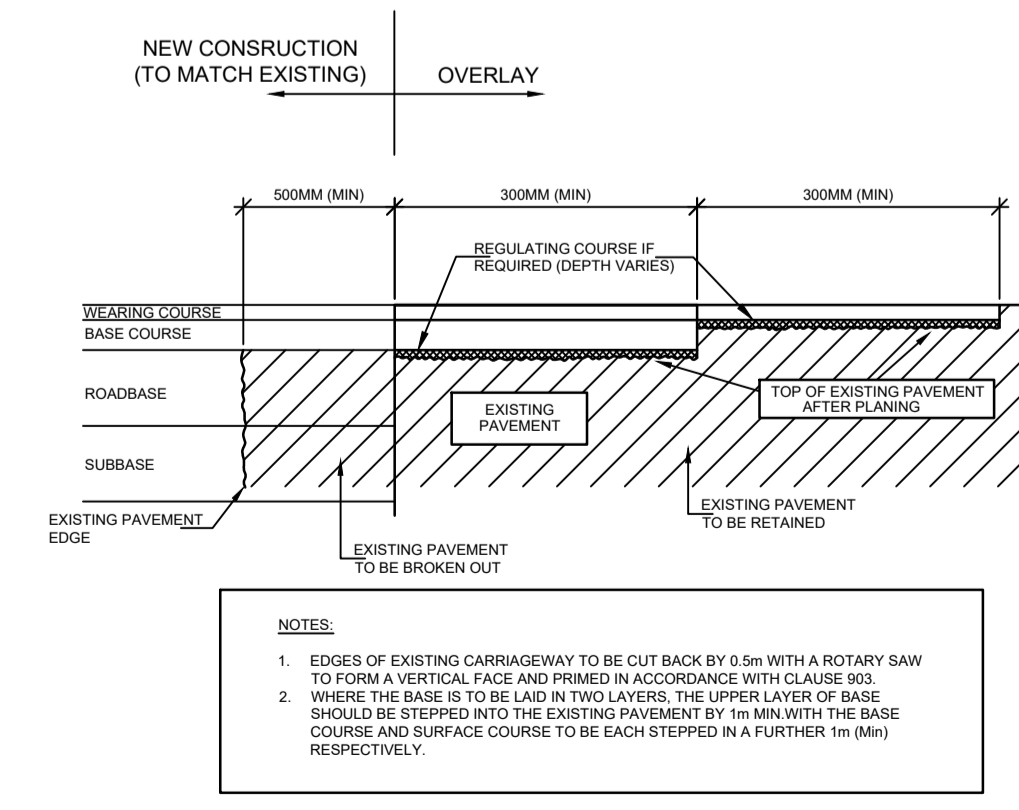


(2-2) LONGITUDINAL CONSTRUCTION WRAPPING JOINT

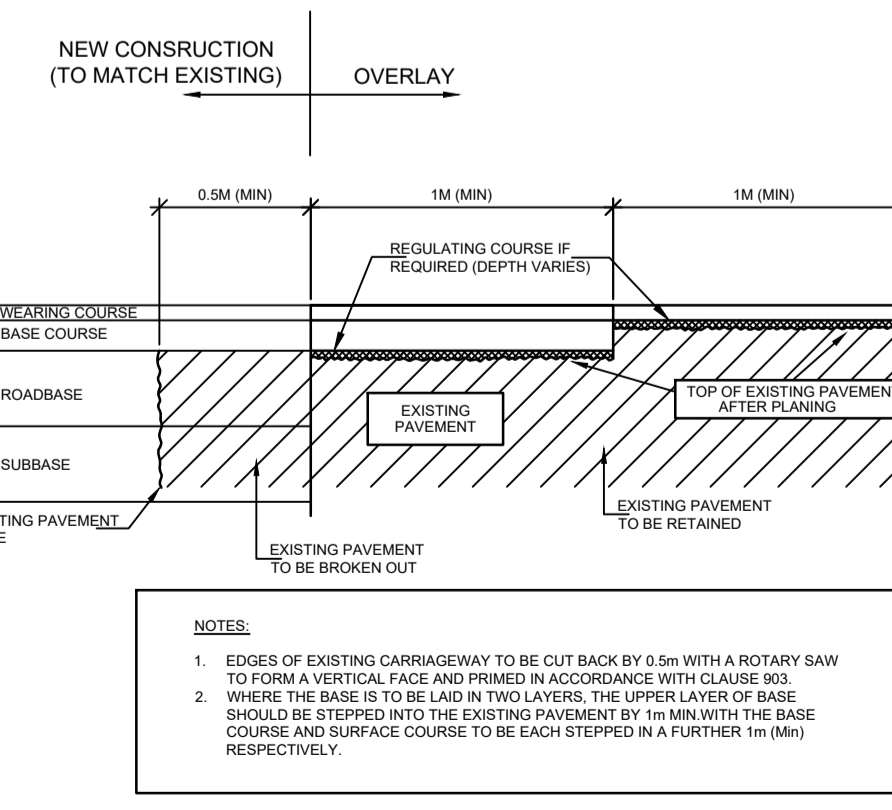


NOTE (1) FOR CONCRETE SLABS UP TO 230mm DEEP THE DOWEL BARS SHOULD BE 20mm DIAMETER AND 500mm LONG. ABOVE THIS DEPTH THE BARS SHOULD BE 25mm DIAMETER AND 600mm LONG.

(3-3) EXPANSION JOINT (E.J.)



NOTES:  
1. EDGES OF EXISTING CARRIAGEWAY TO BE CUT BACK BY 0.5m WITH A ROTARY SAW TO FORM A VERTICAL FACE AND PRIMED IN ACCORDANCE WITH CLAUSE 903.  
2. WHERE THE BASE IS TO BE LAIN IN TWO LAYERS, THE UPPER LAYER OF BASE SHOULD BE STEPPED INTO THE EXISTING PAVEMENT BY 10mm WITH THE BASE COURSE AND SURFACE COURSE TO BE EACH STEPPED IN A FURTHER 10mm (MIN) RESPECTIVELY.



NOTES:  
1. EDGES OF EXISTING CARRIAGEWAY TO BE CUT BACK BY 0.5m WITH A ROTARY SAW TO FORM A VERTICAL FACE AND PRIMED IN ACCORDANCE WITH CLAUSE 903.  
2. WHERE THE BASE IS TO BE LAIN IN TWO LAYERS, THE UPPER LAYER OF BASE SHOULD BE STEPPED INTO THE EXISTING PAVEMENT BY 10mm WITH THE BASE COURSE AND SURFACE COURSE TO BE EACH STEPPED IN A FURTHER 10mm (MIN) RESPECTIVELY.

Rev	Date	Amendments	by	chkd
P01	14.07.20	ISSUED FOR PLANNING	AG	AD

PROJECT  
FCC HAYESTOWN HOUSING, RUSH, Co. DUBLIN

CLIENT  
FINGAL COUNTY COUNCIL

DRAWING TITLE  
ROAD SURFACING DETAILS

drawn by: AG date: 14.07.20 scale: N.T.S. @ A1 chk: AD

2067 - DOW - 00 - XX - DR - CE  
Project Originator Volume Level Type

2067 4005 P01  
DOW Project No. drg. no. rev.

S4 - SUITABLE FOR STAGE APPROVAL  
Suitability Status: Code - Description

Cashel Business Centre,  
Cashel Road, Kimmage, Dublin 12  
T 01 4901611  
E admin@downesassociates.ie  
www.downesassociates.ie

