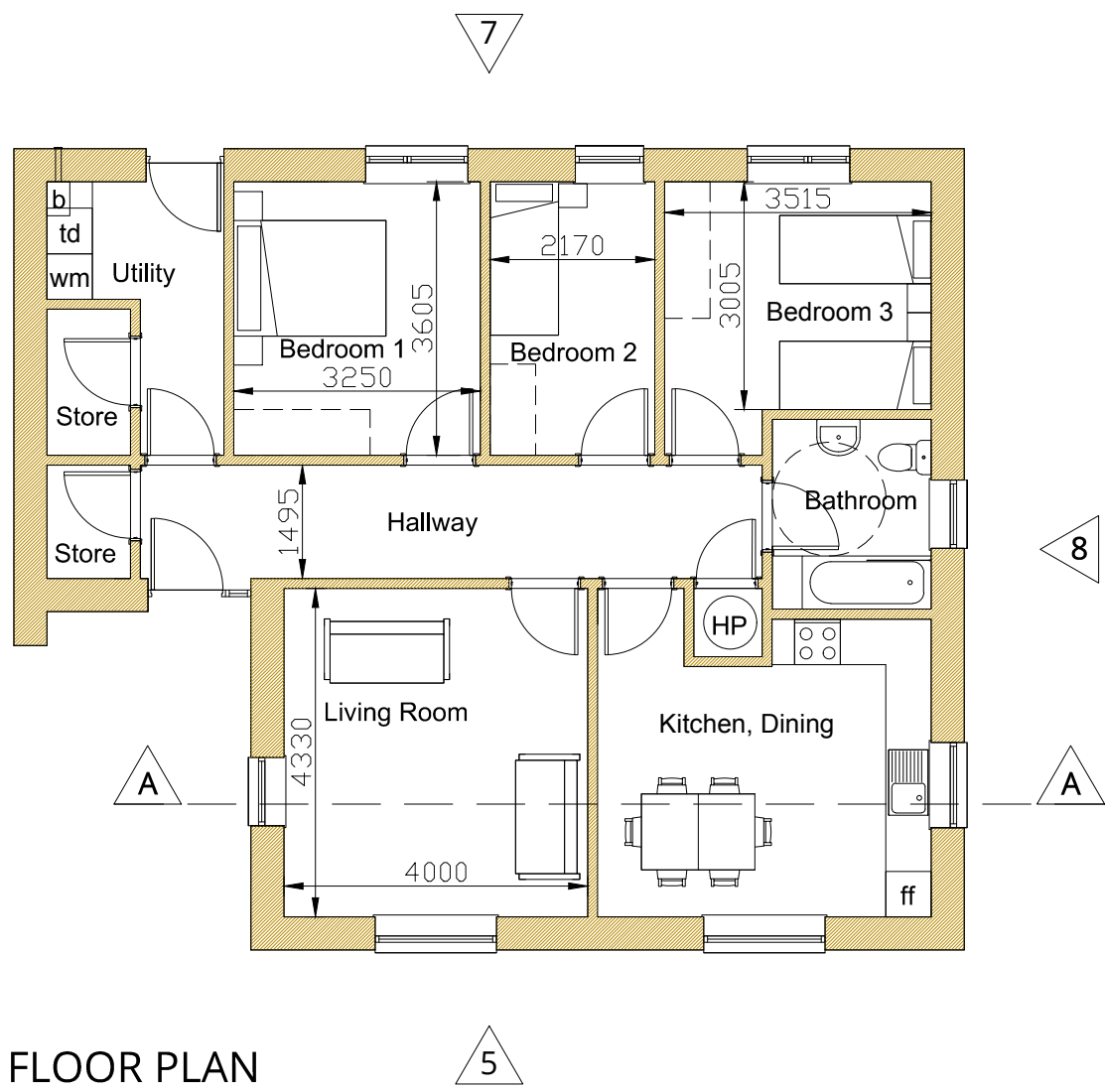
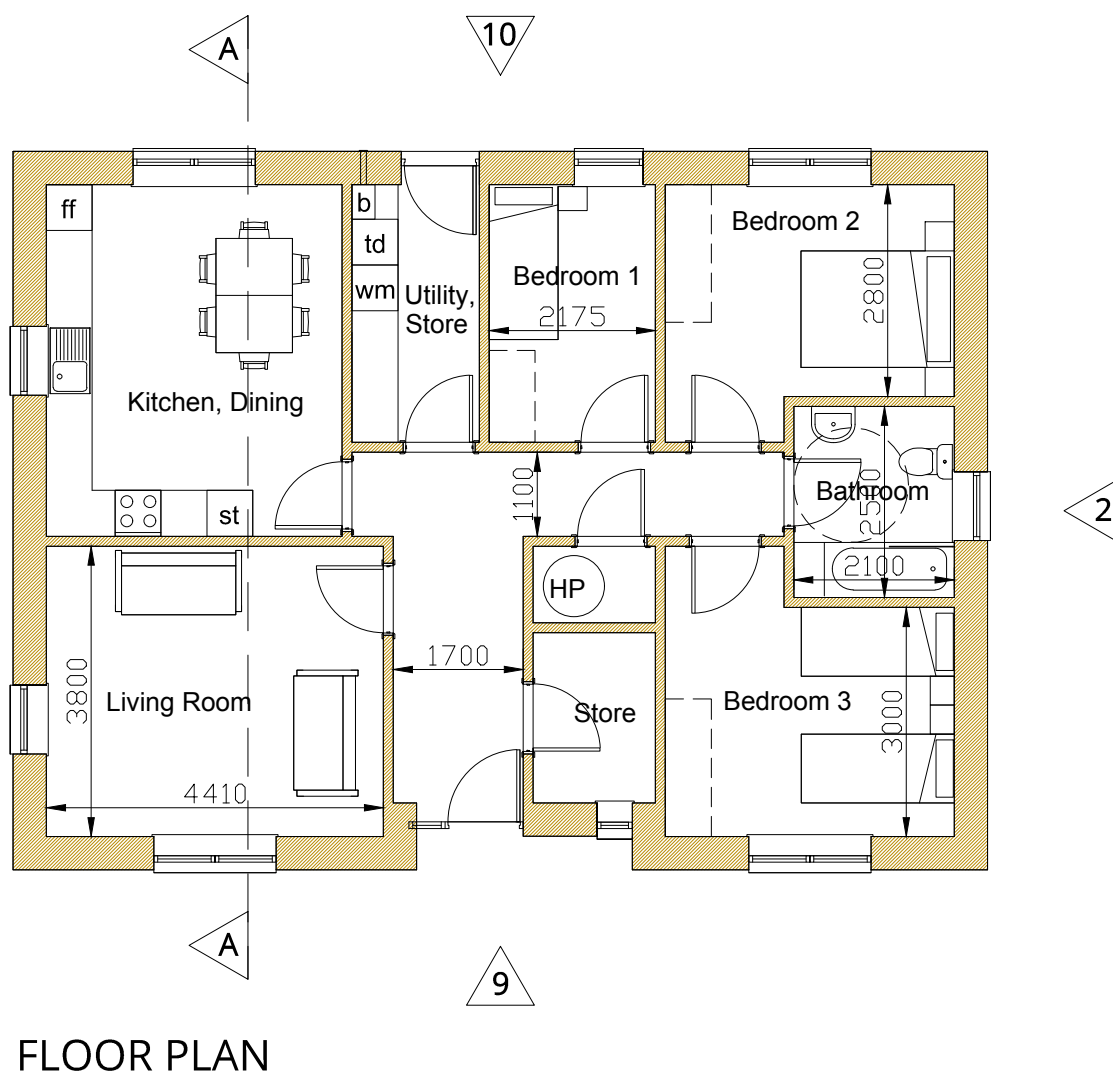
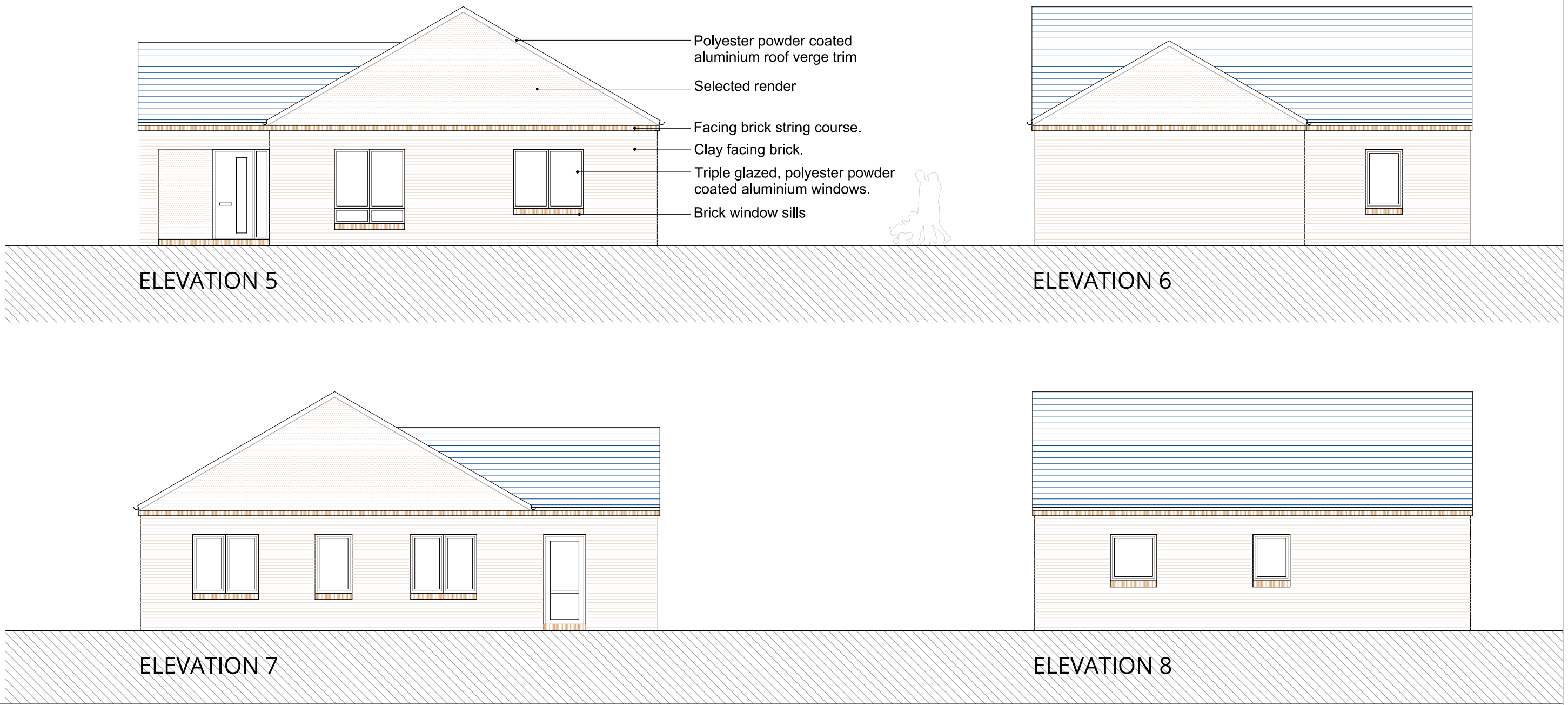


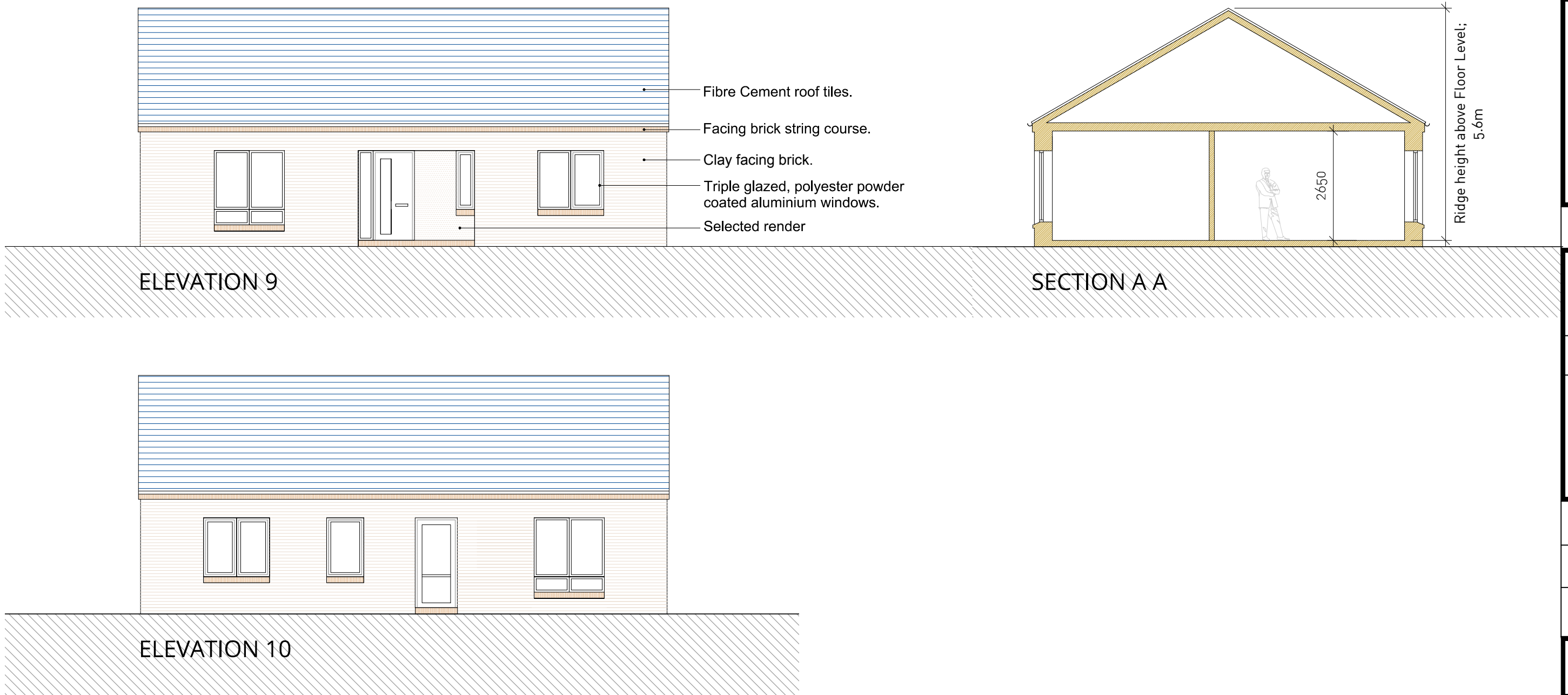
HOUSE TYPE A; (2 No.)		
4 Bedroom, 7 Person, 1 storey		
	Proposed (m²)	Development Plan (m²)
Gross floor area	116	100
Living Room	17.5	15
Aggregate Living	40	40
Bedroom 1	11.4	11.4
Bedroom 2	11.4	11.4
Bedroom 3	11.4	11.4
Bedroom 4	7.8	7.1
Aggregate Bedroom	43	43
Storage	6	6



HOUSE TYPE B; (4No.)		
3 Bedroom, 5 Person, 1 storey.		
	Proposed (m²)	Development Plan (m²)
Gross floor area	98	82
Living Room	17.3	13
Aggregate Living	35	34
Bedroom 1	12	11.4
Bedroom 2	7.8	7.1
Bedroom 3	11.4	11.4
Aggregate Bedroom	32	32
Storage	5	5



HOUSE TYPE C; (1No.)		
3 Bedroom, 5 Person, 1 storey.		
	Proposed (m²)	Development Plan (m²)
Gross floor area	98	82
Living Room	16.8	13
Aggregate Living	34.5	34
Bedroom 1	7.3	7.1
Bedroom 2	11.4	11.4
Bedroom 3	13	13
Aggregate Bedroom	32	32
Storage	5.1	5



Comhairle Contae Fhine Gall  
Fingal County Council

ARCHITECTS' DEPARTMENT  
FINGAL COUNTY HALL, MAIN ST.,  
SWORDS CO., DUBLIN  
Tel: (01)890 5050, Fax: (01) 890 5079

COUNTY ARCHITECT  
FIONNUALA MAY Dip.Arch., B.Arch. Sc., M.U.B.C., M.R.I.A.I

CLIENT  
HOUSING DEPARTMENT

PROJECT TITLE  
PROPOSED HOUSING  
STOCKHOLE LANE, Co DUBLIN.

PROJECT STAGE  
PRE-PLANNING

DRAWING TITLE  
DWELLING  
PLANS & ELEVATIONS

PROJECT ARCHITECT  
ARCHITECTS' DEPARTMENT

DRAWN  
FGM

CHECKED

SCALE  
1:100@ A1

DATE  
JULY 2019

DRAWING NUMBER  
16-126-PP-04

REV