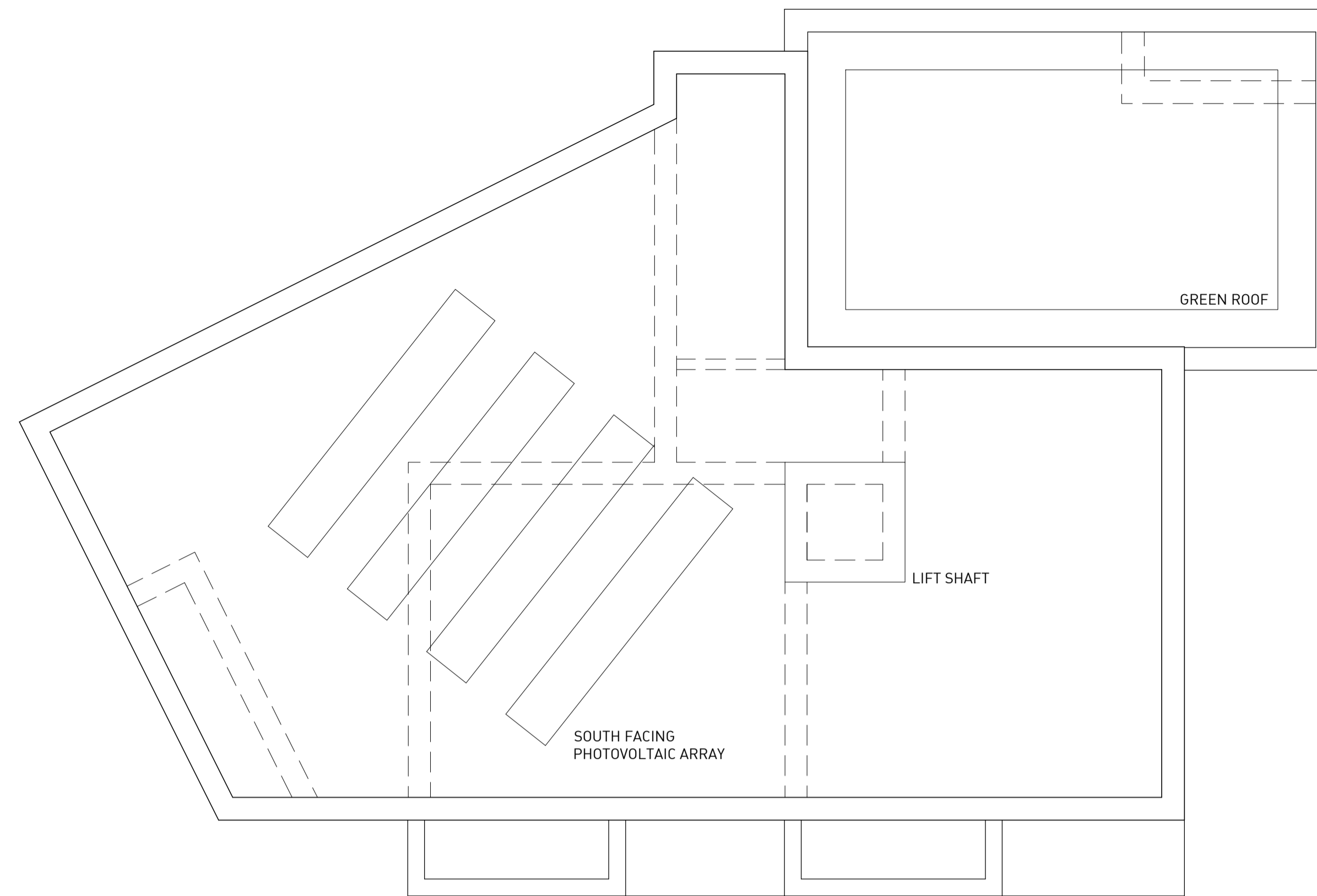
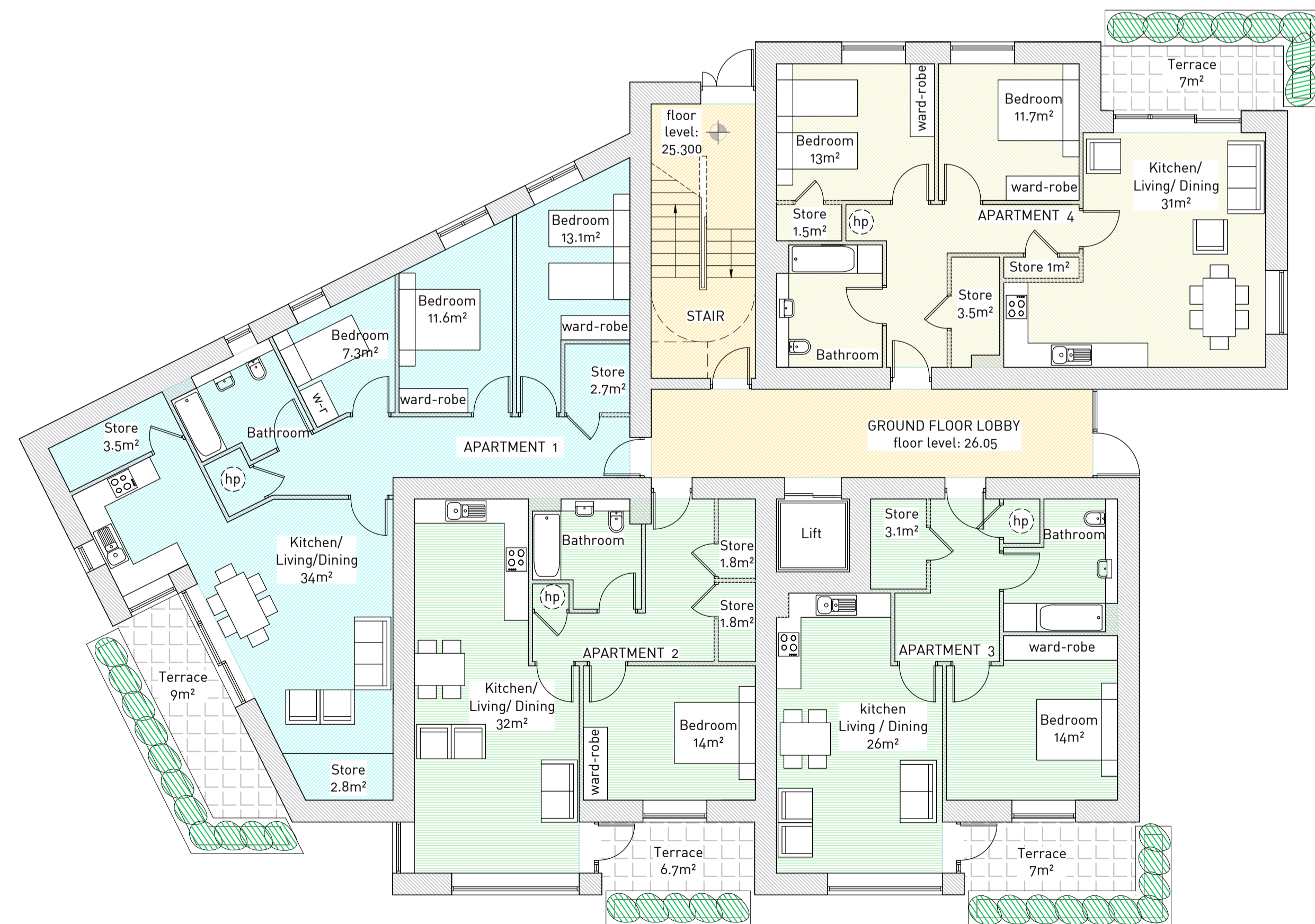


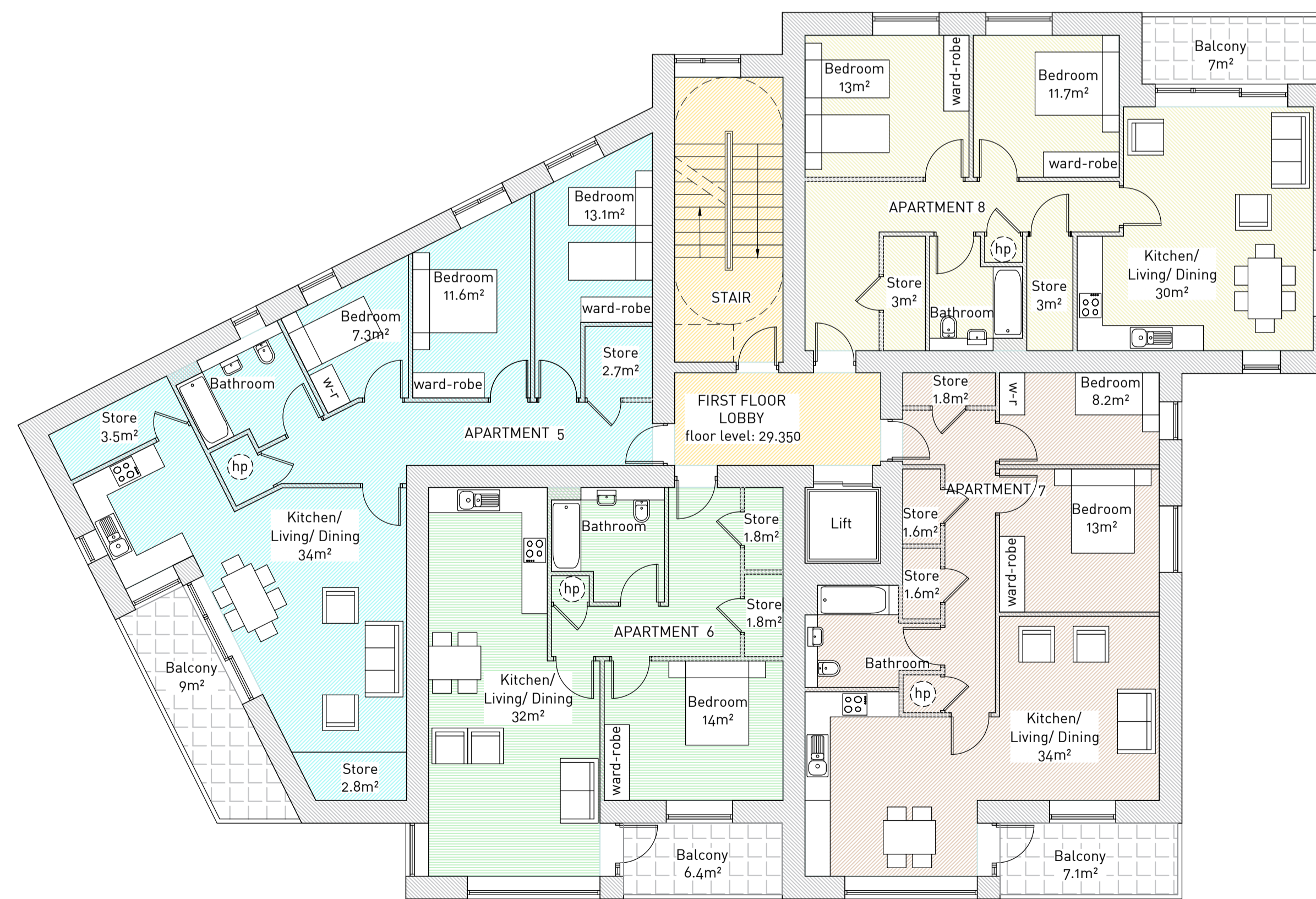
SECOND FLOOR PLAN



ROOF PLAN

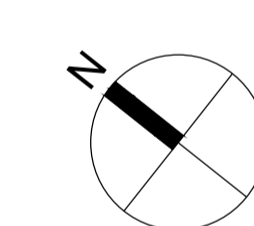


GROUND FLOOR PLAN



FIRST FLOOR PLAN

SCHEDULE OF ACCOMMODATION		
ONE BEDROOM / 2 PERSON APT		
Apt	Proposed Areas	Dev Plan / Apartments (Min areas)
2	70 Sqm	45 Sqm
3	64 Sqm	45 Sqm
6	70 Sqm	45 Sqm
10	62 Sqm	45 Sqm
TWO BEDROOM / 3 PERSON APT		
Apt	Proposed Areas	Dev Plan / Apartments (Min areas)
7	81 Sqm	63 Sqm
11	73 Sqm	63 Sqm
TWO BEDROOM / 4 PERSON APT		
Apt	Proposed Areas	Dev Plan / Apartments (Min areas)
4	83 Sqm	73 Sqm
8	83 Sqm	73 Sqm
THREE BEDROOM / 5 PERSON APT		
Apt	Proposed Areas	Dev Plan / Apartments (Min areas)
1	99 Sqm	90 Sqm
5	99 Sqm	90 Sqm
9	99 Sqm	90 Sqm



**Comhairle Contae Fhine Gall**  
**Fingal County Council**  
 ARCHITECTS' DEPARTMENT  
 FINGAL COUNTY HALL, MAIN ST.,  
 SWORDS CO., DUBLIN  
 Tel: (01)890 5050, Fax: (01) 890 5079



COUNTY ARCHITECT  
 FIONNUALA MAY Dip.Arch., B.Arch. Sc., M.U.B.C., M.R.I.A.I

CLIENT: HOUSING DEPARTMENT  
 PROJECT TITLE: PROPOSED APARTMENT DEVELOPMENT RATHBEALE ROAD, SWORDS  
 PROJECT STAGE: PLANNING CONSULTATION  
 DRAWING TITLE: FLOOR PLANS

PROJECT ARCHITECT: ARCHITECTS DEPARTMENT  
 DRAWN: CB CHECKED: [ ]  
 SCALE: 1:100@A1 DATE: OCTOBER 2019  
 DRAWING NUMBER: 15-331-P-03 REV: [ ]