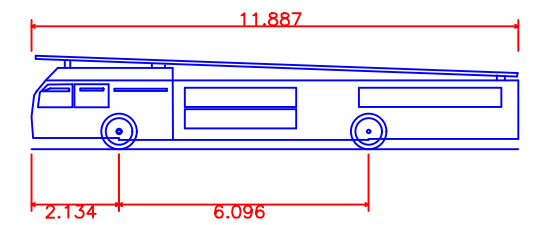
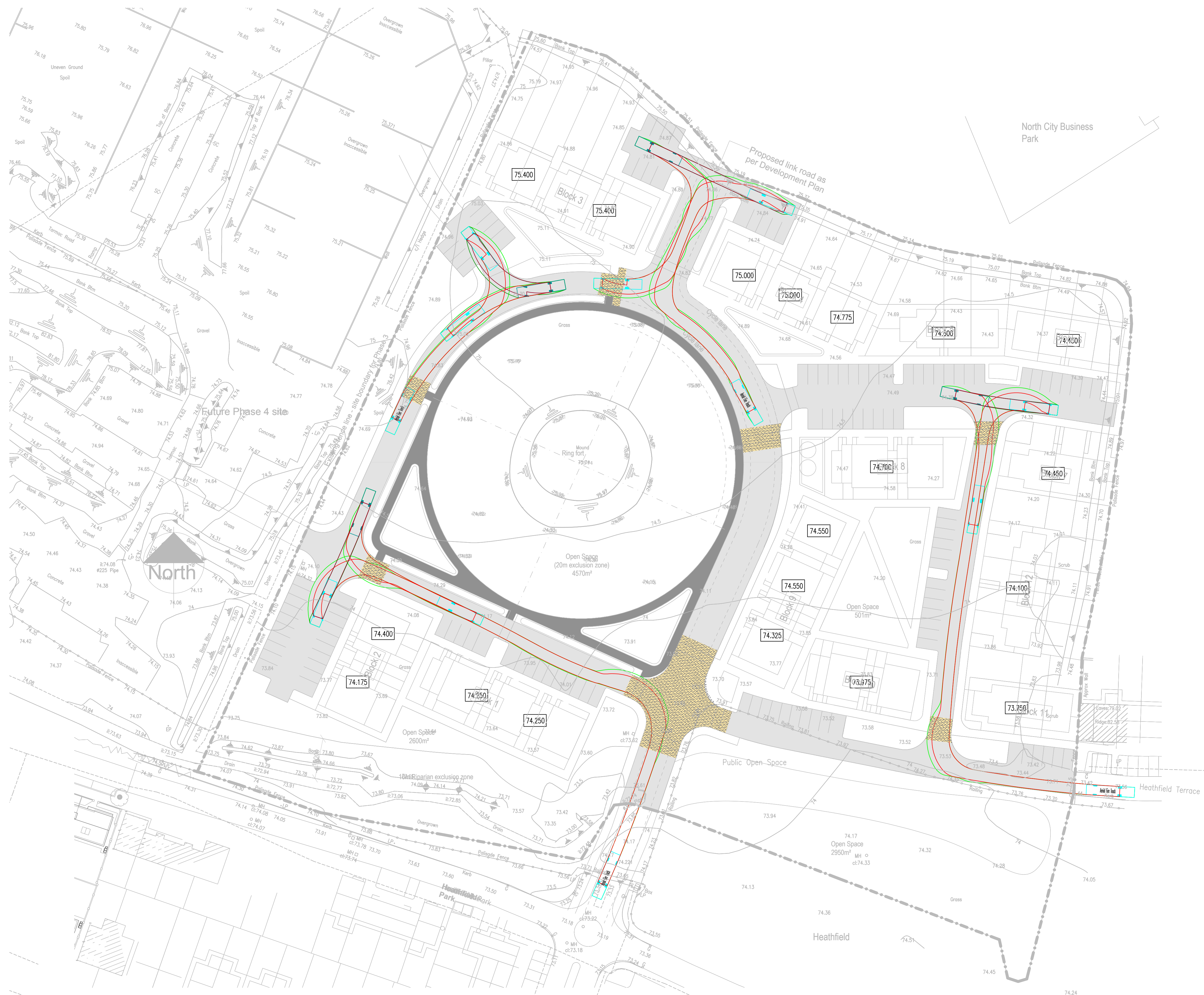


GENERAL NOTES:

1. ALL DIMENSIONS AND LEVELS TO BE VERIFIED ON SITE PRIOR TO COMMENCEMENT OF THE WORKS. ANY DISCREPANCIES TO BE REPORTED TO THE ENGINEER.
2. THIS DRAWING IS TO BE READ IN CONJUNCTION WITH THE RELEVANT ARCHITECT'S AND OTHER CIVIL DRAWINGS.



Aerial Fire Truck
 Overall Length 11.887m
 Overall Width 2.489m
 Overall Body Height 2.286m
 Min Body Ground Clearance 0.229m
 Track Width 2.489m
 Lock to lock time 5.00s
 Max Wheel Angle 45.00°



FIRE ENGINE SWEEP PATH ANALYSIS
 SCALE 1:500

FOR PART 8 PLANNING PURPOSES ONLY

REV	DATE	DESCRIPTION	FM	MK	APPR
A	22.07.19	CHANGES AFTER INITIAL COMMENTS			

DRAWING STATUS: PART_8_PLANNING	
CLIENT: FINGAL COUNTY COUNCIL	
JOB DESCRIPTION: CAPPAGHFINN PHASE III HD	
DRAWING TITLE: FIRE ENGINE SWEEP PATH ANALYSIS	
PROJECT No.: P-3333	DRAWING No.: C-07
	REV. No.: A
SCALE: 1:500	SHEET: A1
	DATE: 25.06.19
DRAWN BY: PMCG	CHECKED BY: MK
	APPROVED BY: PMCM
Consulting Civil & Structural Engineers, Project Managers Environmental Engineers, PSDP & Traffic Engineers The Mill Building, Newtown Link Road, Greenhills, Drogheda, Co. Louth t: 041 2137 050 e: info@mcMahonengineers.com	