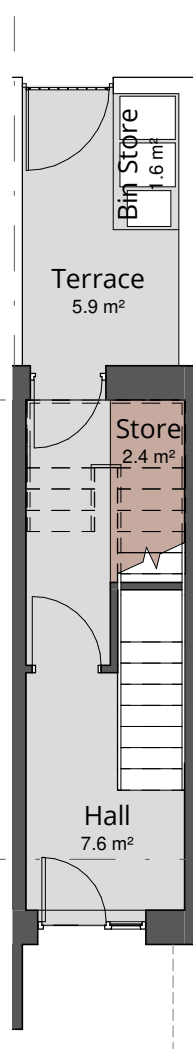


# Dwelling Type G3 (Second Floor)

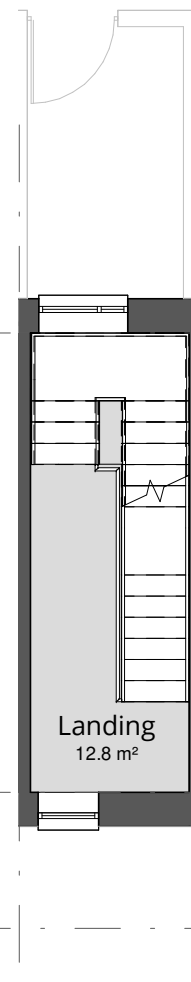
## 1 bedroom, 2 person (1B2P)

| TYPE G3 - 1-bed 2-person                    | Area m <sup>2</sup> | Target Area m <sup>2</sup><br>(minimum) | Percentage<br>variation |
|---|---------------------|---|-------------------------|
| Kitchen/Dining/Living Area m <sup>2</sup>   | 24.6                | 11.0                                    |                         |
| Aggregate Living Area m <sup>2</sup>        | 24.6                | 23.0                                    |                         |
| Bedroom 1 (Double/Main) Area m <sup>2</sup> | 13.0                | 11.4                                    |                         |
| Aggregate Bedroom Area m <sup>2</sup>       | 13.0                | 11.4                                    |                         |
| Storage m <sup>2</sup>                      | 4.7                 | 3.0                                     |                         |
| Private Open Space (Balcony)                | 23.8                | 5.0                                     |                         |
| GF Area m <sup>2</sup>                      | 12.8                | -                                       |                         |
| FF Area m <sup>2</sup>                      | 6.1                 | -                                       |                         |
| 2nd F Area m <sup>2</sup>                   | 53.4                |   |                         |
| Total Gross Floor Area m <sup>2</sup>       | 72.2                |   |                         |
| Total Area Excl Stairwell m <sup>2</sup>    | 53.4                | 45.0                                    | 18.56%                  |

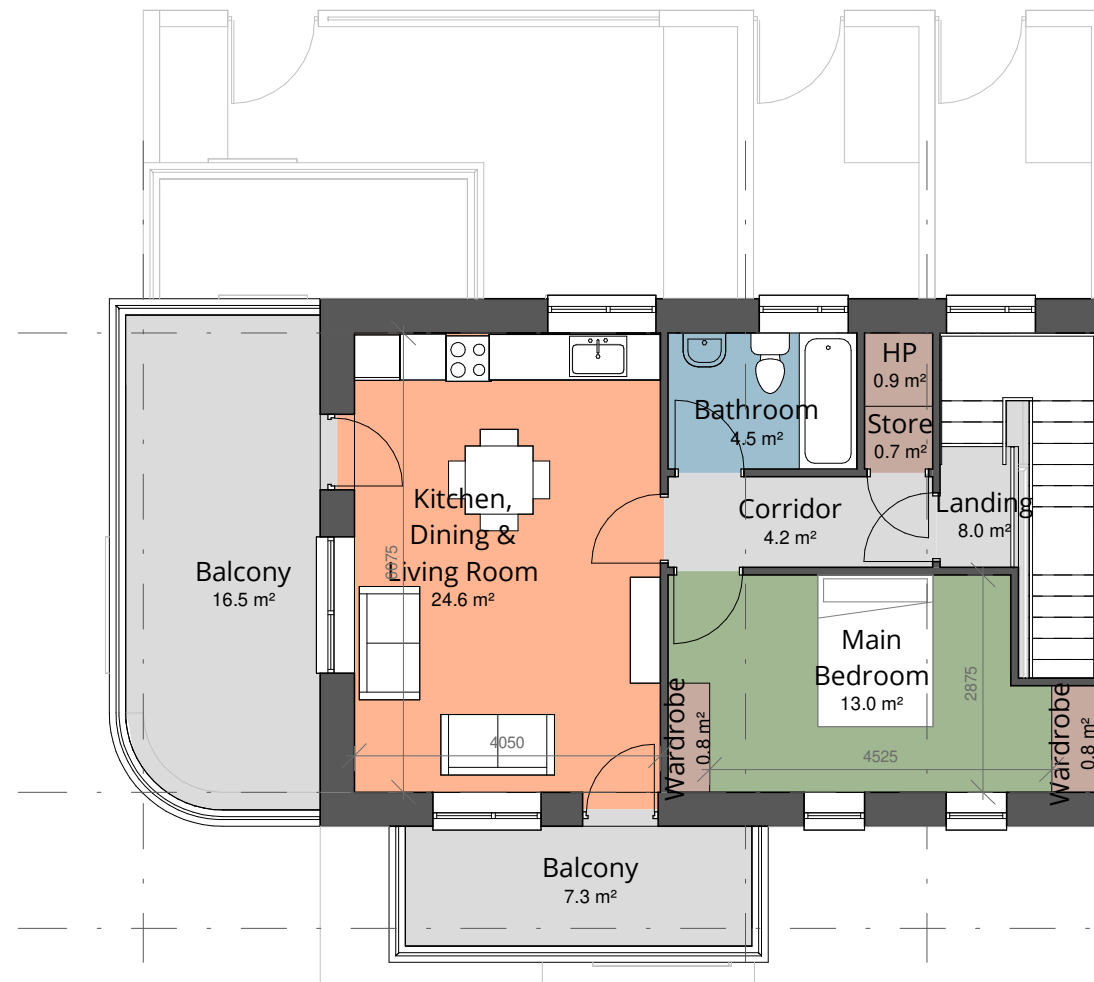
- Living Areas
- Sanitary Facilities
- Bedrooms
- Circulation
- Storage



① Type G3 - Ground Floor Plan  
1 : 100



② Type G3 - First Floor Plan  
1 : 100



③ Type G3 - Second Floor Plan  
1 : 100

Comhairle Contae  
Fhine Gall  
Fingal County  
Council



Architects Department  
County Hall, Main Street, Swords,  
Co Dublin.

County Architect:  
Fionnuala May Dip.Arch B.Arch.Sc. MUBC MRIAI

01 890 5050 architects@fingal.ie

Client

Fingal County Council  
Housing Department

Project Title

Proposed new Housing at  
Cappaghfinn Phase 3

Drawing Title

Dwelling Type G3 - Plans &  
Area Schedule

Project number 18-362

Project stage P

Date 2019-08-26

Project Team CB AP CE CC

Scale 1 : 100

Drawing no. Revision no.

**18-362 - P - 215**