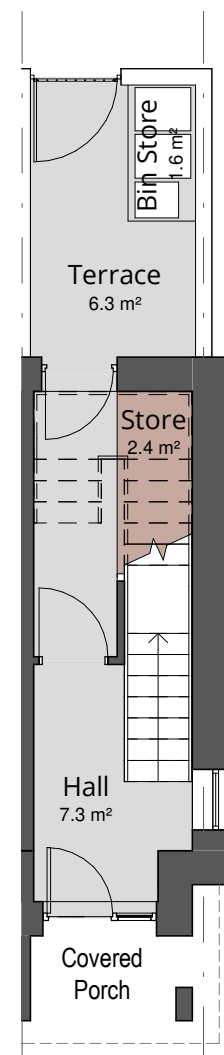


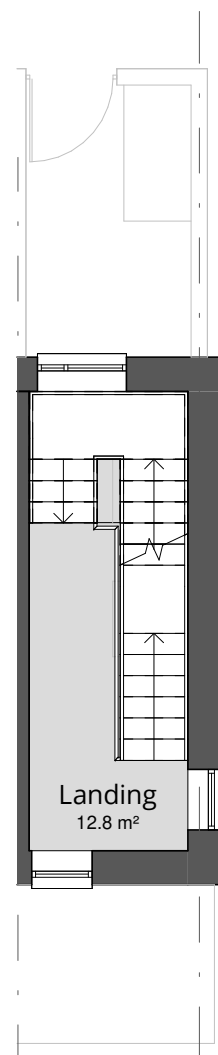
Dwelling Type F3 (Second Floor, Ground Floor Entrance) **2 bedroom, 3 person (2B3P)**

TYPE F3 - 2-bed 3-person	Area m ²	Target Area m ² (minimum)	Percentage variation
Kitchen/Dining/Living Area m ²	30.6	13.0	
Aggregate Living Area m ²	30.6	28.0	
Bedroom 1 (Single) Area m ²	9.0	7.1	
Bedroom 2 (Double/Main) Area m ²	13.0	13.0	
Aggregate Bedroom Area m ²	22.0	20.1	
Storage m ²	6.0	5.0	
Private Open Space (Balcony)	13.6	6.0	
GF Area m ²	12.8	-	
FF Area m ²	6.2	-	
2nd F Area m ²	71.8		
Total Gross Floor Area m ²	90.8		
Total Area Excl Stairwell m ²	71.8	63.0	14.03%

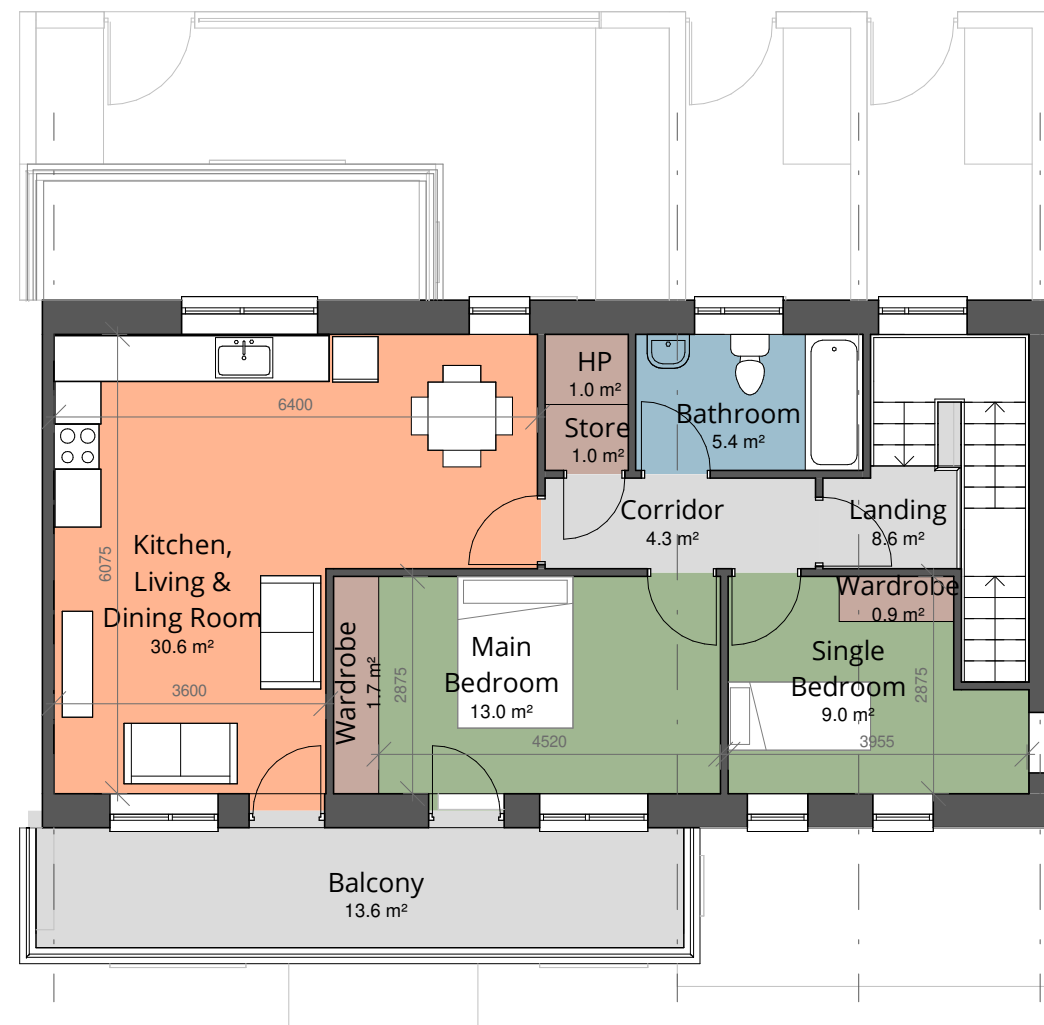
- Living Areas
- Sanitary Facilities
- Bedrooms
- Circulation
- Storage



① Type F3 - Ground Floor Plan
1 : 100



② Type F3 - First Floor Plan
1 : 100



③ Type F3 - Second Floor Plan
1 : 100

**Comhairle Contae
Fhine Gall**
Fingal County
Council



Architects Department
County Hall, Main Street, Swords,
Co Dublin.

County Architect:
Fionnuala May Dip.Arch B.Arch.Sc. MUBC MRIAI

01 890 5050 architects@fingal.ie

Client

Fingal County Council
Housing Department

Project Title

Proposed new Housing at
Cappaghfinn Phase 3

Drawing Title

Dwelling Type F3 - Plan &
Area Schedule

Project number 18-362

Project stage P

Date 2019-08-26

Project Team CB AP CE CC

Scale 1 : 100

Drawing no. Revision no.

18-362 - P - 211