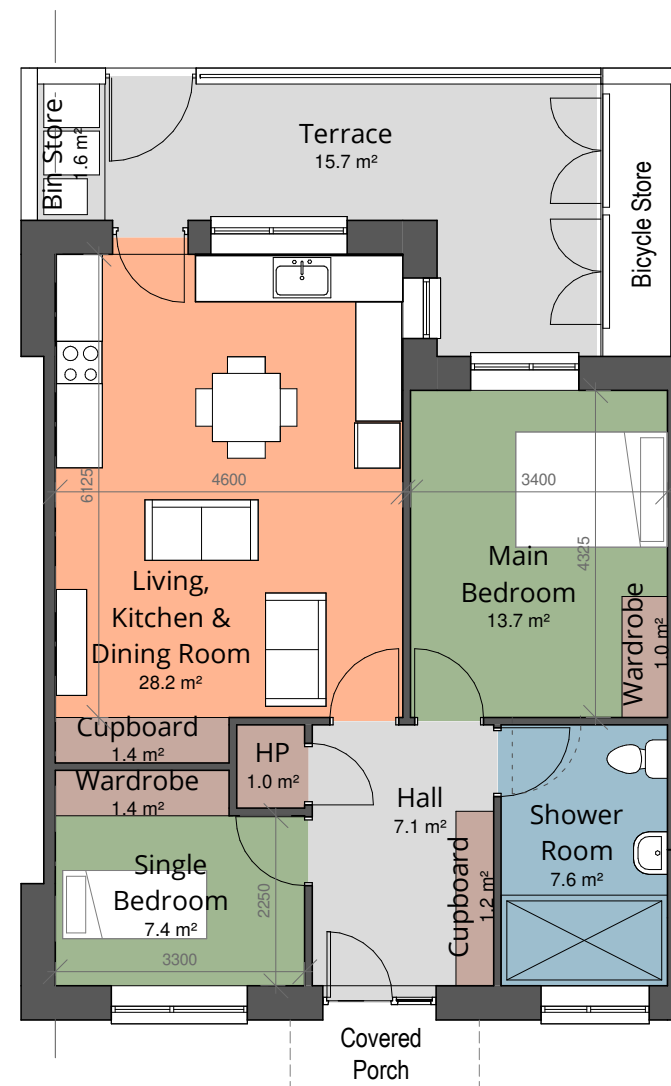


## Dwelling Type F1 (Ground Floor)

### 2 bedroom, 3 person (2B3P)

TYPE F1 - 2-bed 3-person	Area m <sup>2</sup>	Target Area m <sup>2</sup> (minimum)	Percentage variation
Kitchen/Dining/Living Area m <sup>2</sup>	28.2	13	
Aggregate Living Area m <sup>2</sup>	28.2	28.0	
Bedroom 1 (Single) Area m <sup>2</sup>	7.4	7.1	
Bedroom 2 (Double/Main) Area m <sup>2</sup>	13.7	13	
Aggregate Bedroom Area m <sup>2</sup>	21.1	20.1	
Storage m <sup>2</sup>	5.0	5.0	
Private Open Space (Terrace)	15.7	6.0	
GF Area m <sup>2</sup>	73.5	-	
FF Area m <sup>2</sup>	0.0	-	
<b>Total Gross Floor Area m<sup>2</sup></b>	<b>73.5</b>	<b>63.0</b>	<b>16.71%</b>



- Living Areas
- Sanitary Facilities
- Bedrooms
- Circulation
- Storage

**Comhairle Contae  
Fhine Gall**  
Fingal County  
Council



**Architects Department**  
County Hall, Main Street, Swords,  
Co Dublin.

**County Architect:**  
Fionnuala May Dip.Arch B.Arch.Sc. MUBC MRIA

01 890 5050 architects@fingal.ie

Client

Fingal County Council  
Housing Department

Project Title

Proposed new Housing at  
Cappaghfinn Phase 3

Drawing Title

Dwelling Type F1 - Plan &  
Area Schedule

Project number 18-362

Project stage P

Date 2019-08-26

Project Team CB AP CE CC

Scale 1 : 100

Drawing no. Revision no.

**18-362 - P - 209**

① Type F1 - Ground Floor Plan  
1 : 100