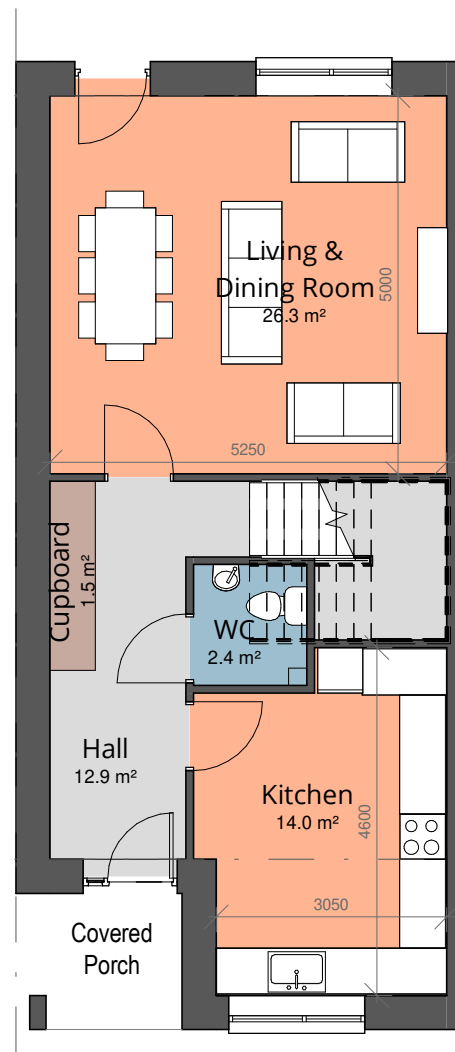
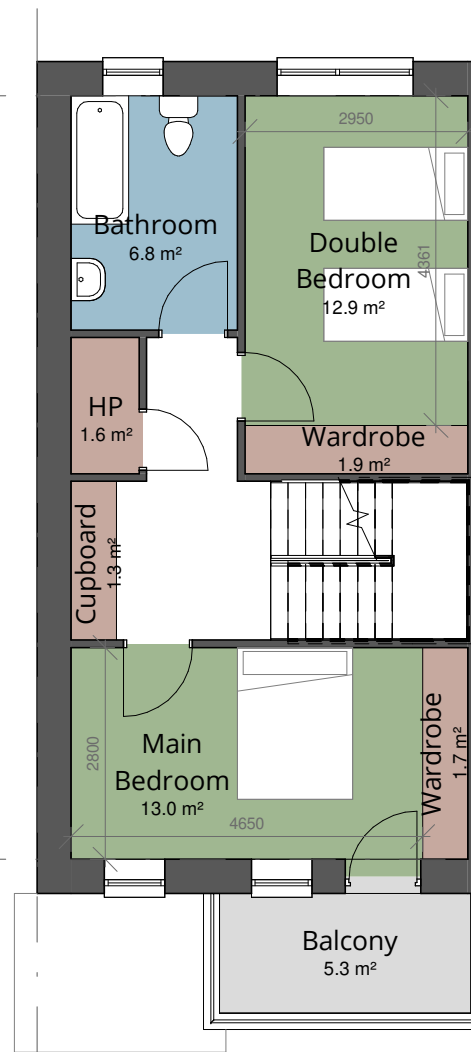


# Dwelling Type E (Three Storeys) 4 Bedroom 7 Person (4B7P)

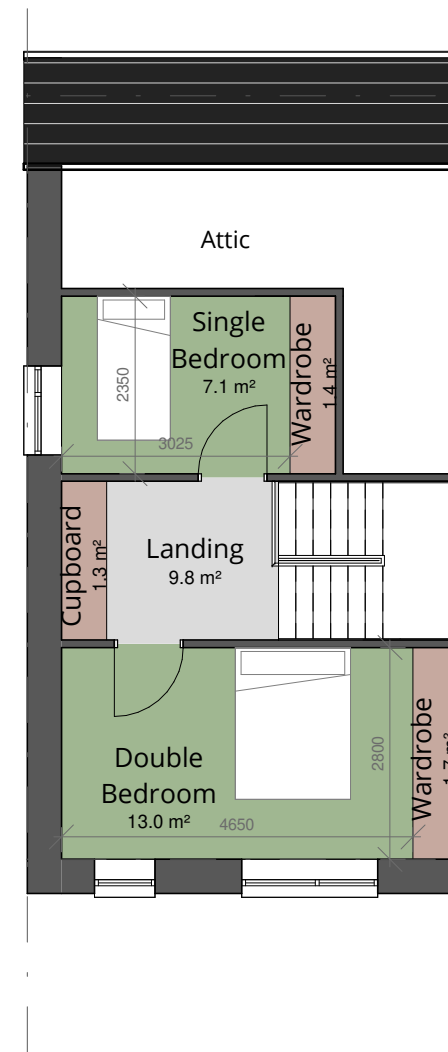
TYPE E - 4-bed 7-person	Area m <sup>2</sup>	Target Area m <sup>2</sup> (minimum)	Percentage variation
Kitchen/Dining Area m <sup>2</sup>	14.0	-	
Living Area m <sup>2</sup>	26.3	15.0	
Aggregate Living Area m <sup>2</sup>	40.3	40.0	
Bedroom 1 (Double) Area m <sup>2</sup>	13.0	11.4	
Bedroom 2 (Double) Area m <sup>2</sup>	12.9	11.4	
Bedroom 3 (Double/Main) Area m <sup>2</sup>	13.0	13	
Bedroom 4 (Single) Aream <sup>2</sup>	7.1	7.1	
Aggregate Bedroom Area m <sup>2</sup>	46.0	43.0	
Storage m <sup>2</sup>	10.8	6.0	
GF Area m <sup>2</sup>	58.52	-	
FF Area m <sup>2</sup>	47.54	-	
2nd F Area m <sup>2</sup>	30.13		
<b>Total Gross Floor Area m<sup>2</sup></b>	<b>136.2</b>	<b>120.0</b>	<b>13.49%</b>



① Type E - Ground Floor Plan  
1 : 100



② Type E - First Floor Plan  
1 : 100



③ Type E - Second Floor Plan  
1 : 100

- Living Areas
- Sanitary Facilities
- Bedrooms
- Circulation
- Storage

Comhairle Contae  
Fhine Gall  
Fingal County  
Council



**Architects Department**  
County Hall, Main Street, Swords,  
Co Dublin.

**County Architect:**  
Fionnuala May Dip.Arch B.Arch.Sc. MUBC MRIA

01 890 5050 architects@fingal.ie

Client

Fingal County Council  
Housing Department

Project Title

Proposed new Housing at  
Cappaghfinn Phase 3

Drawing Title

Dwelling Type E - Plan &  
Area Schedule

Project number 18-362

Project stage P

Date 2019-08-26

Project Team CB AP CE CC

Scale 1 : 100

Drawing no. Revision no.

**18-362 - P - 207**