

# Dwelling Type D (Two Storey)

## 4 Bedroom 7 Person (4B7P)

| TYPE D - 4-bed 7-person                     | Area m <sup>2</sup> | Target Area m <sup>2</sup><br>(minimum) | Percentage<br>variation |
|---|---------------------|---|-------------------------|
| Kitchen/Dining Area m <sup>2</sup>          | 24.0                | -                                       |                         |
| Living Area m <sup>2</sup>                  | 16.0                | 15.0                                    |                         |
| Aggregate Living Area m <sup>2</sup>        | 40.0                | 40.0                                    |                         |
| Bedroom 1 (single) Area m <sup>2</sup>      | 7.5                 | 7.1                                     |                         |
| Bedroom 2 (Double) Area m <sup>2</sup>      | 13.6                | 11.4                                    |                         |
| Bedroom 3 (Double) Area m <sup>2</sup>      | 11.4                | 11.4                                    |                         |
| Bedroom 4 (Double/Main) Area m <sup>2</sup> | 13.1                | 13.0                                    |                         |
| Aggregate Bedroom Area m <sup>2</sup>       | 45.6                | 43.0                                    |                         |
| Storage m <sup>2</sup>                      | 7.5                 | 6.0                                     |                         |
| GF Area m <sup>2</sup>                      | 76.4                | -                                       |                         |
| FF Area m <sup>2</sup>                      | 49.2                | -                                       |                         |
| <b>Total Gross Floor Area m<sup>2</sup></b> | <b>125.6</b>        | <b>110.0</b>                            | <b>14.15%</b>           |

Comhairle Contae  
Fhine Gall  
Fingal County  
Council



**Architects Department**  
County Hall, Main Street, Swords,  
Co Dublin.

**County Architect:**  
Fionnuala May Dip.Arch B.Arch.Sc. MUBC MRIAI

01 890 5050 architects@fingal.ie

Client

Fingal County Council  
Housing Department

Project Title

Proposed new Housing at  
Cappaghfinn Phase 3

Drawing Title

Dwelling Type D - Plans &  
Area Schedule

Project number 18-362

Project stage P

Date 2019-08-26

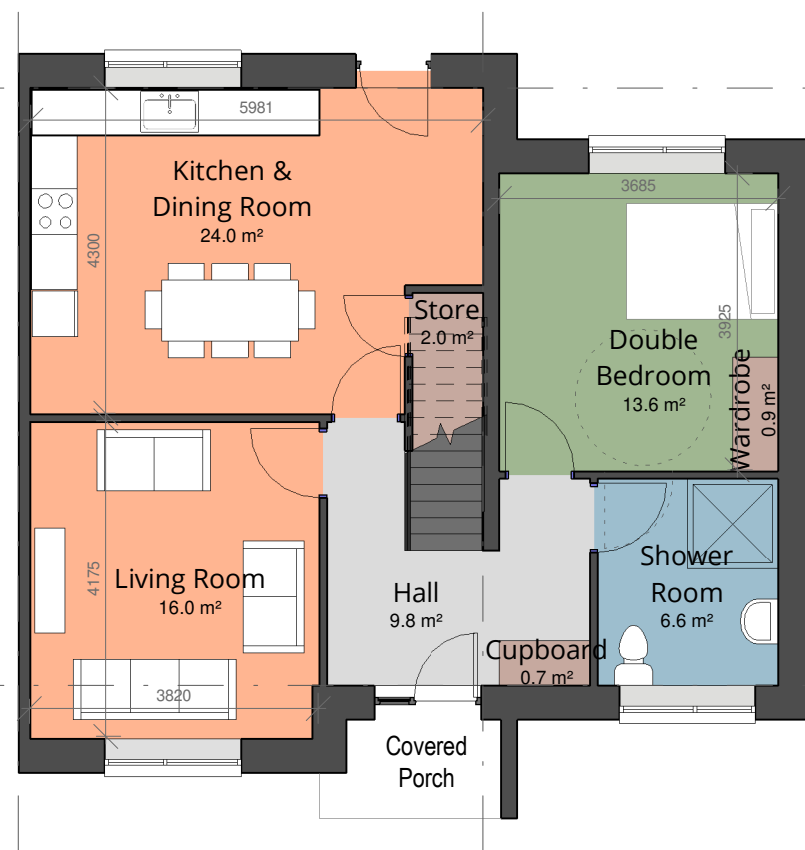
Project Team CB AP CE CC

Scale 1 : 100

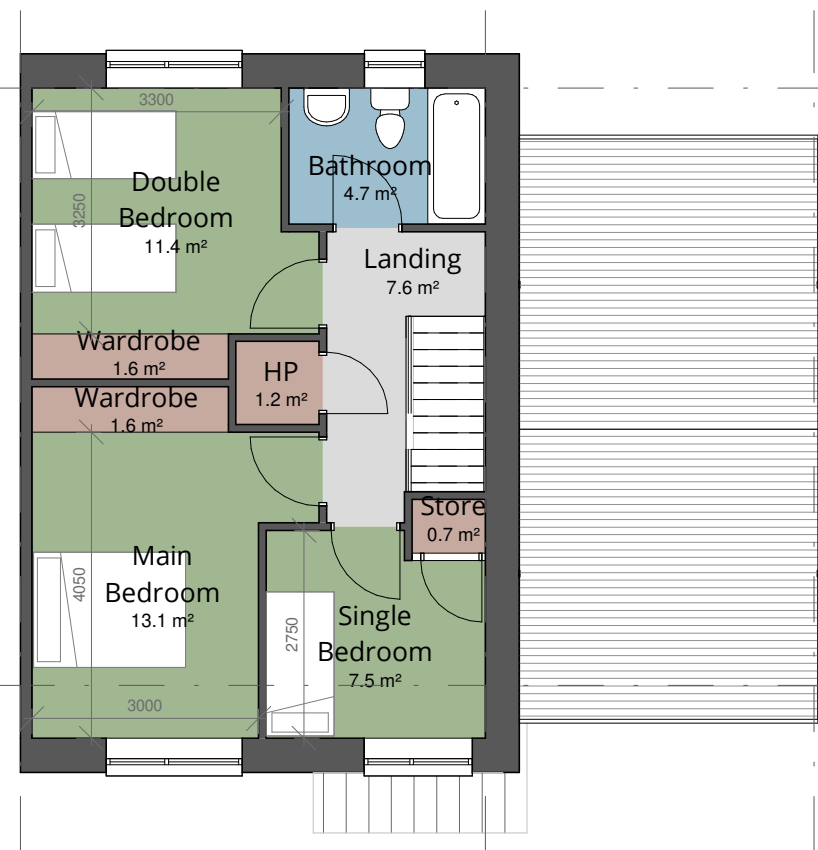
Drawing no. Revision no.

**18-362 - P - 205**

- Living Areas
- Sanitary Facilities
- Bedrooms
- Circulation
- Storage



1 Type D - First Floor Plan  
1 : 100



2 Type D - First Floor Plan  
1 : 100