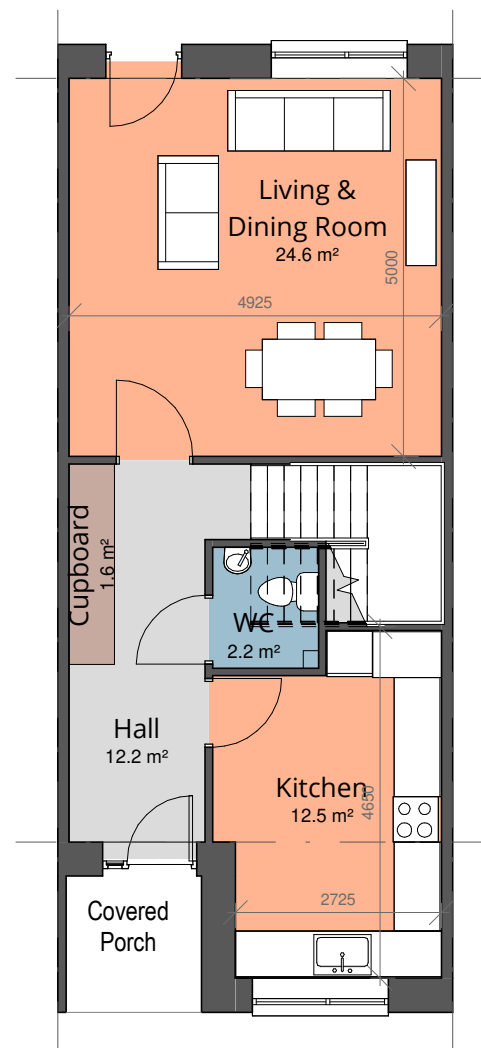


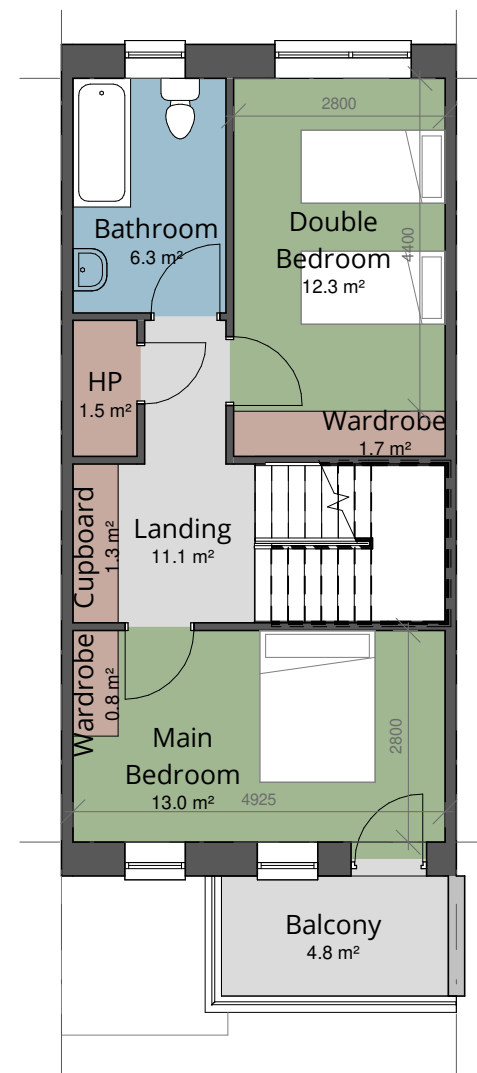
Dwelling Type C (Three Storeys)

3 Bedroom 6 Person (3B6P)

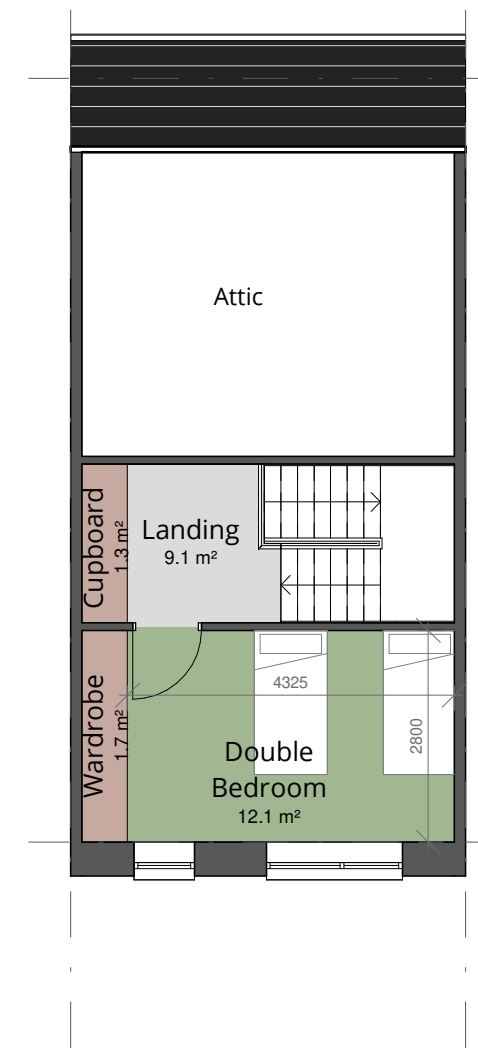
TYPE C - 3-bed 6-person	Area m ²	Target Area m ² (minimum)	Percentage variation
Kitchen/Dining Area m ²	12.5	-	
Living Area m ²	24.6	15.0	
Aggregate Living Area m ²	37.1	37.0	
Bedroom 1 (Double) Area m ²	12.3	11.4	
Bedroom 2 (Double) Area m ²	12.1	11.4	
Bedroom 3 (Double/Main) Area m ²	13.0	13	
Aggregate Bedroom Area m ²	37.4	36.0	
Storage m ²	8.4	6.0	
GF Area m ²	54.65	-	
FF Area m ²	44.44	-	
2nd F Area m ²	19.58		
Total Gross Floor Area m²	118.7	110.0	7.88%



① Type C - Ground Floor Plan
1 : 100



② Type C - First Floor Plan
1 : 100



③ Type C - Second Floor Plan
1 : 100

- Living Areas
- Sanitary Facilities
- Bedrooms
- Circulation
- Storage

**Comhairle Contae
Fhine Gall**
Fingal County
Council



Architects Department
County Hall, Main Street, Swords,
Co Dublin.

County Architect:
Fionnuala May Dip.Arch B.Arch.Sc. MUBC MRIA

01 890 5050 architects@fingal.ie

Client

Fingal County Council
Housing Department

Project Title

Proposed new Housing at
Cappaghfinn Phase 3

Drawing Title

Dwelling Type C - Floor
Plans & Area Schedule

Project number 18-362

Project stage P

Date 2019-08-26

Project Team CB AP CE CC

Scale 1 : 100

Drawing no. Revision no.

18-362 - P - 203