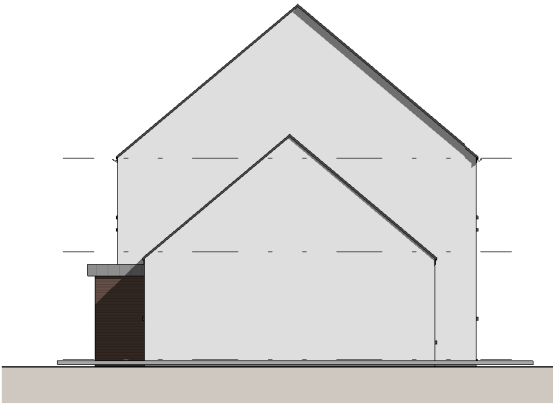


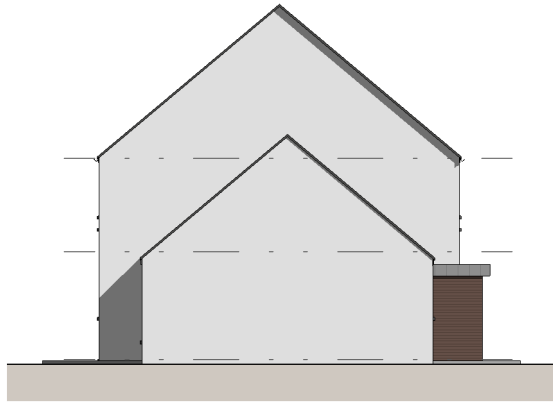
Block 12

for detailed dwelling layout refer to drg. no.'s 201 - 202 and drg. no.'s 205 - 206

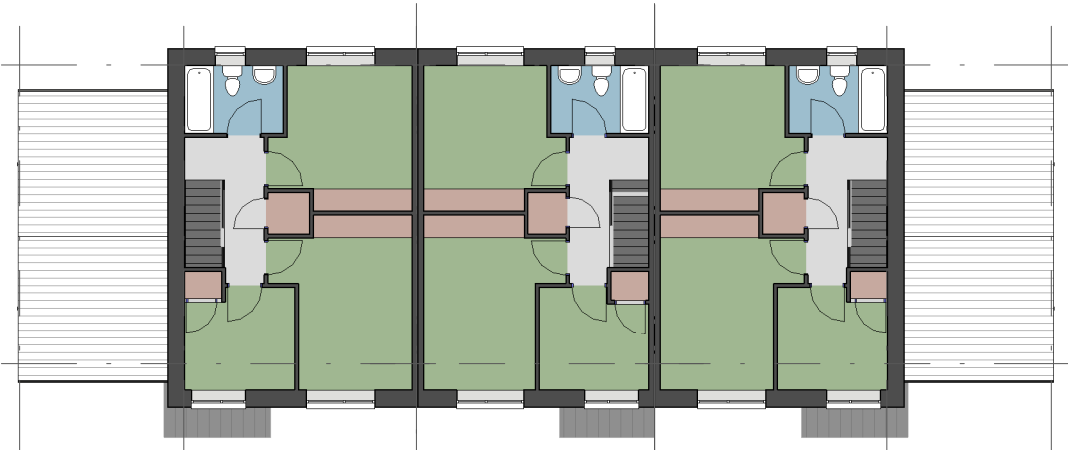
- Living Areas
- Sanitary Facilities
- Bedrooms
- Circulation
- Storage



5 Block 12 Gable Elevation 1
1 : 200



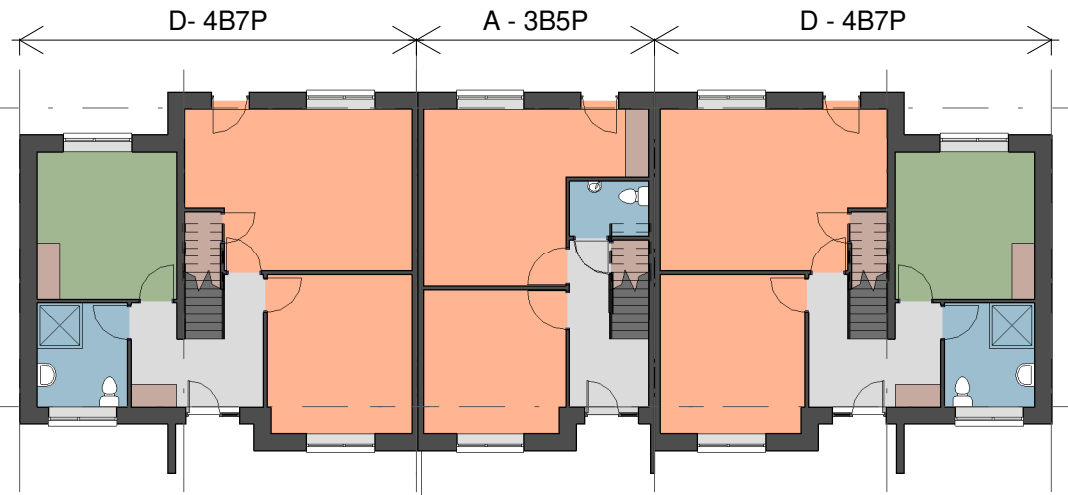
6 Block 12 Gable Elevation 2
1 : 200



2 Block 12 First Floor Plan
1 : 200



4 Block 12 Rear Elevation
1 : 200



1 Block 12 Ground Floor Plan
1 : 200



3 Block 12 Front Elevation
1 : 200

**Comhairle Contae
Fhine Gall**
Fingal County
Council



Architects Department
County Hall, Main Street, Swords,
Co Dublin.

County Architect:
Fionnuala May Dip.Arch B.Arch.Sc. MUBC MRIAI

01 890 5050 architects@fingal.ie

Client
Fingal County Council
Housing Department

Project Title
Proposed new Housing at
Cappaghfinn Phase 3

Drawing Title
Block 12 Plans & Elevations

Project number 18-362

Project stage P

Date 2019-08-26

Project Team CB AP CE CC

Scale 1 : 200

Drawing no. Revision no.
18-362 - P - 110