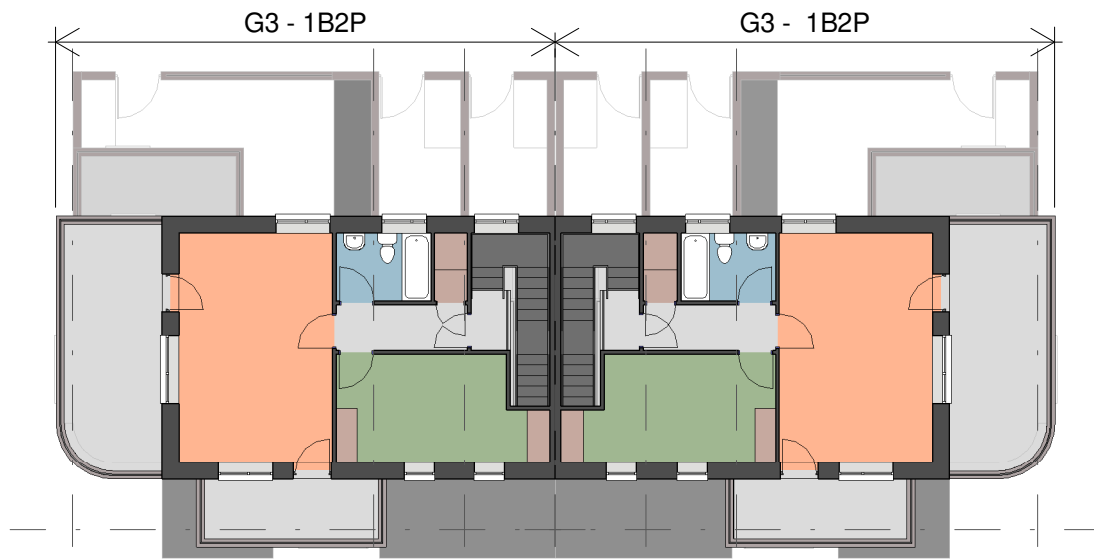


Block 2

for detailed dwelling layout refer to drg. no.'s 213 - 216

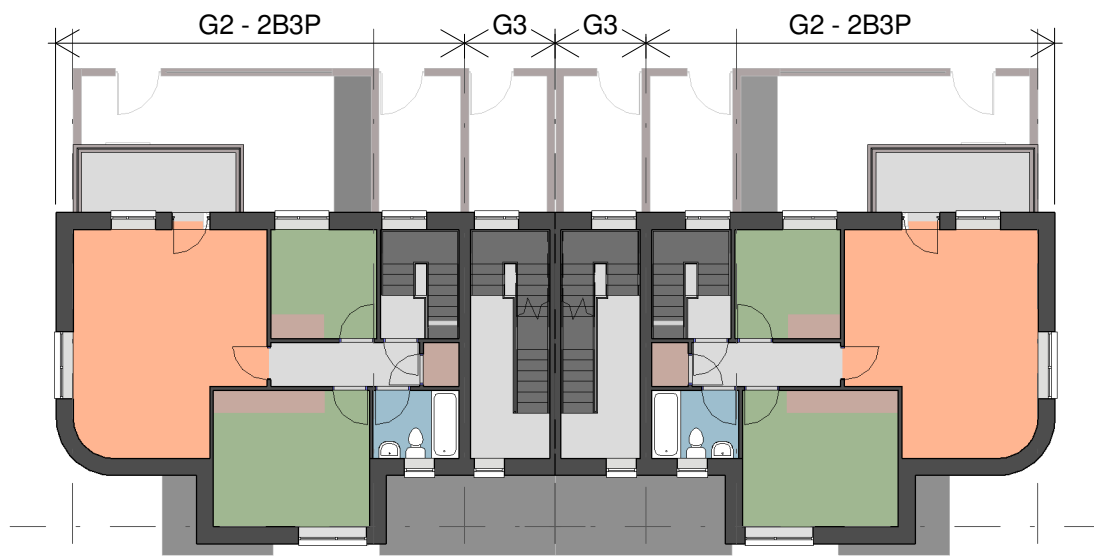
- Living Areas
- Sanitary Facilities
- Bedrooms
- Circulation
- Storage



3 Block 2 Second Floor Plan
1 : 200



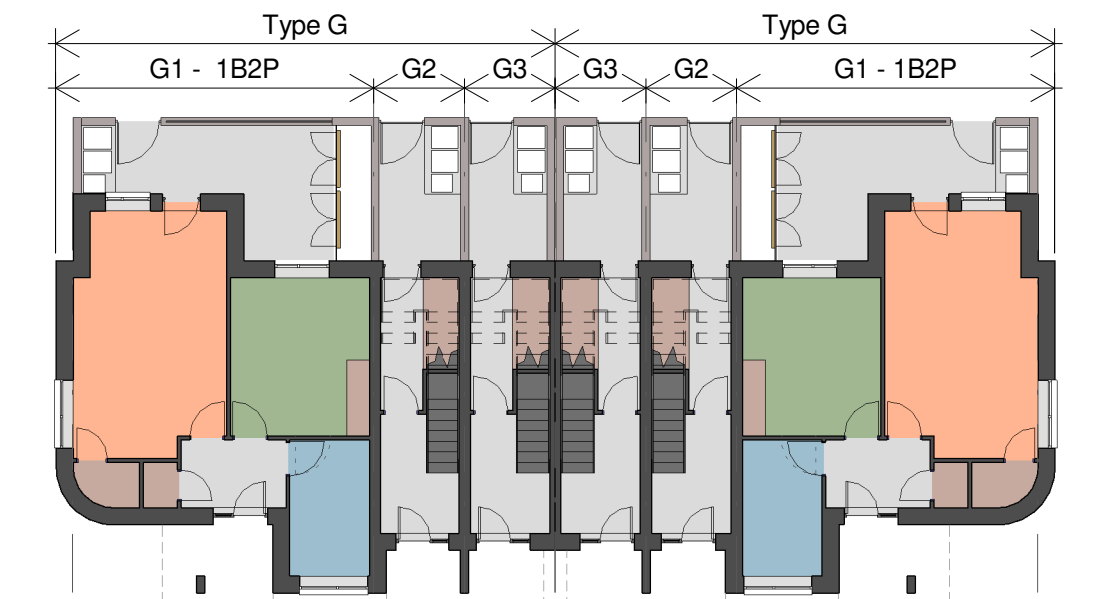
6 Block 2 Gable Elevation
1 : 200



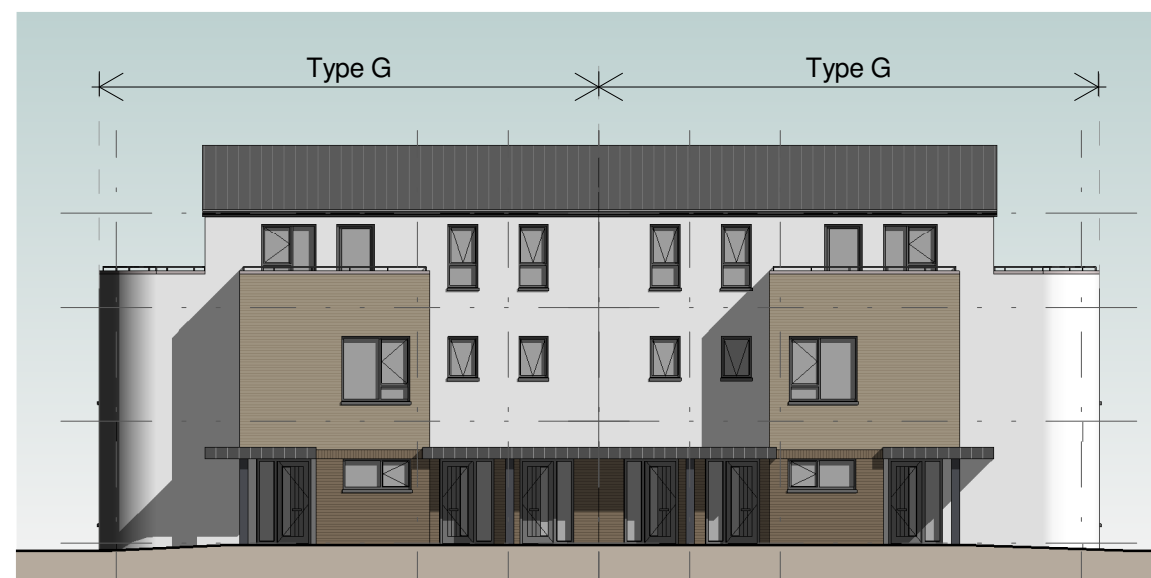
2 Block 2 First Floor Plan
1 : 200



5 Block 2 Rear Elevation
1 : 200



1 Block 2 Ground Floor Plan
1 : 200



4 Block 2 Front Elevation
1 : 200

**Comhairle Contae
Fhine Gall**
Fingal County
Council



Architects Department
County Hall, Main Street, Swords,
Co Dublin.

County Architect:
Fionnuala May Dip.Arch B.Arch.Sc. MUBC MRIAI

01 890 5050 architects@fingal.ie

Client

Fingal County Council
Housing Department

Project Title

Proposed new Housing at
Cappaghfinn Phase 3

Drawing Title

Block 2 - Plans & Elevations

Project number 18-362

Project stage P

Date 2019-08-26

Project Team CB AP CE CC

Scale 1 : 200

Drawing no. Revision no.

18-362 - P - 103