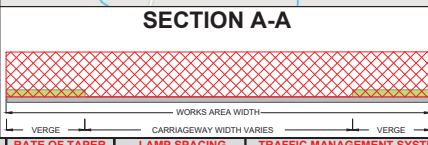
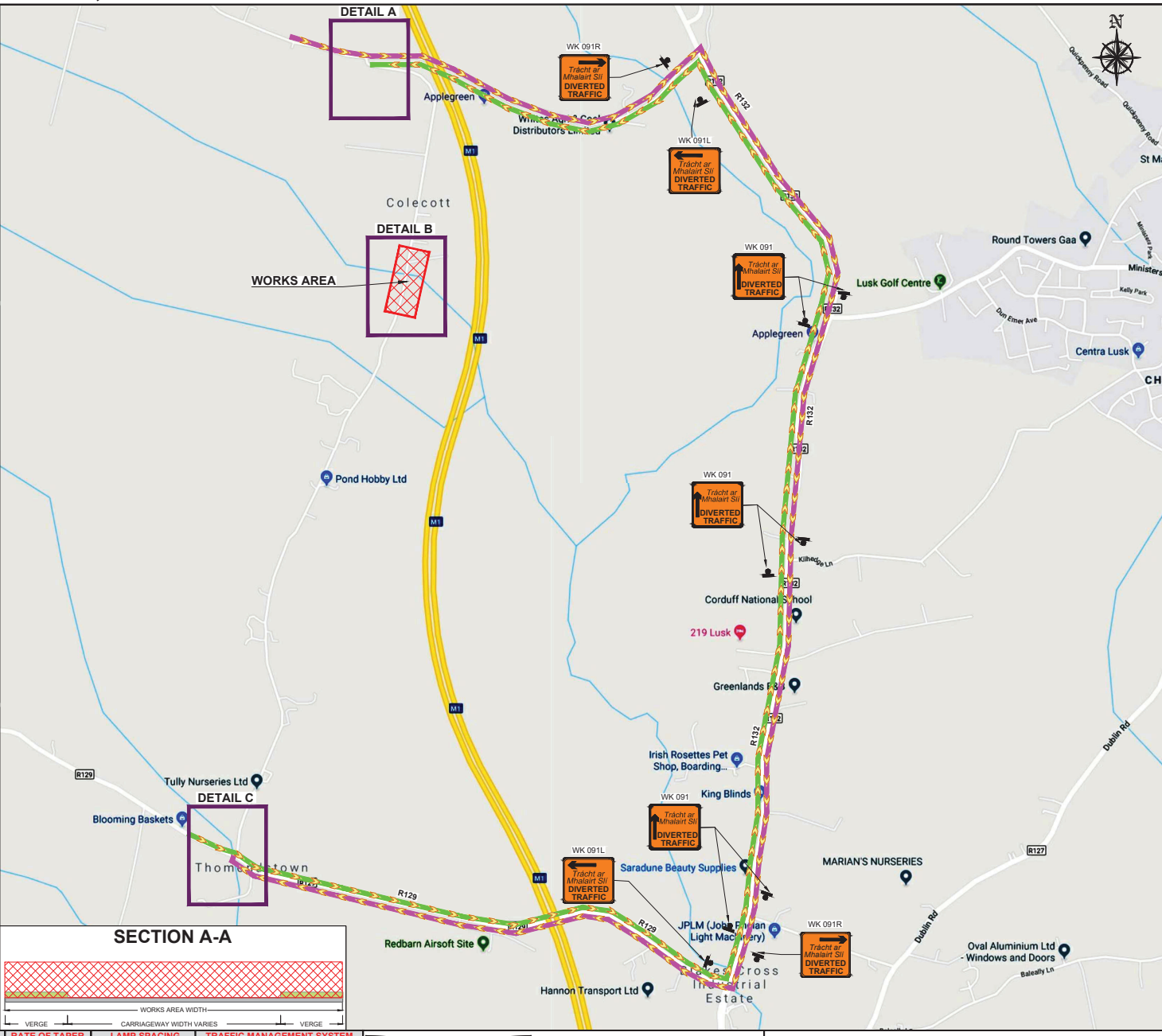
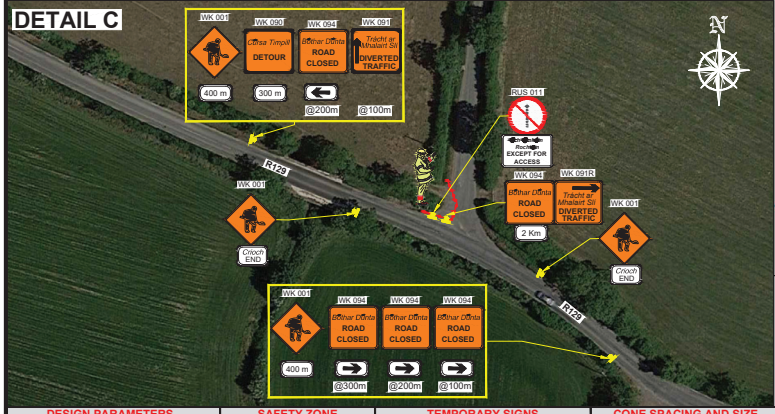
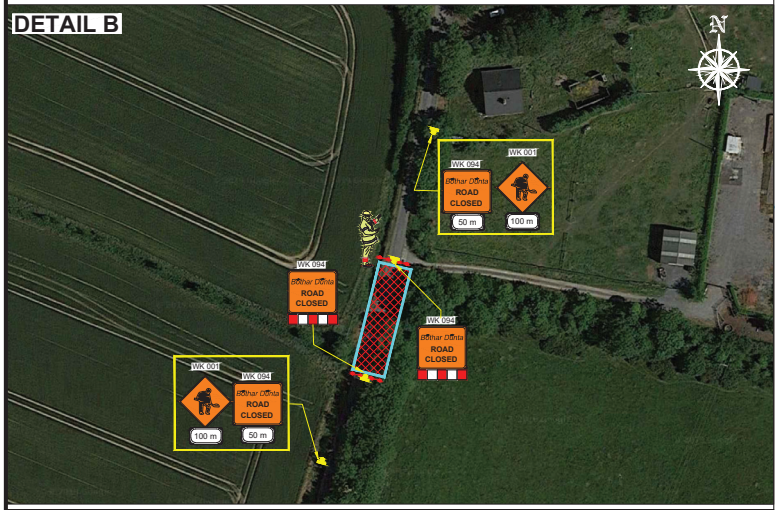
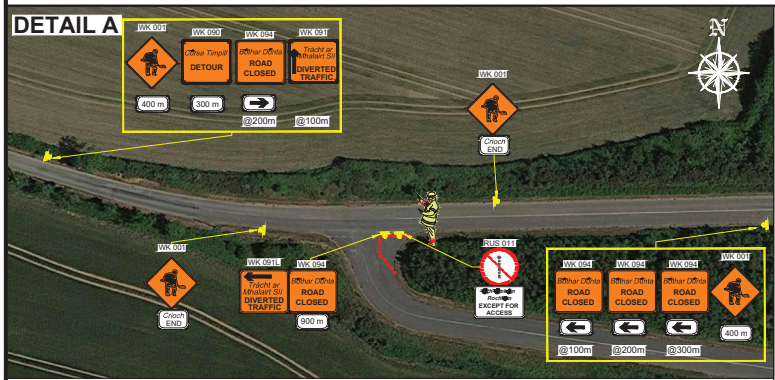


COLECOT BRIDGE, CO. FINGAL - ROAD CLOSURE - DIVERSION ROUTES



DESIGN PARAMETERS		SAFETY ZONE			TEMPORARY SIGNS		CONE SPACING AND SIZE		RATE OF TAPER		LAMP SPACING		TRAFFIC MANAGEMENT SYSTEM							
Road Level	Roadworks Type	Speed Limit (km/h)	Min. Lane Width (m)	Longitudinal (m)	Lateral (m)	Set Back (m)	Distance (m)	Number	Min. Size (m)	Sign Visibility (m)	Longitudinal (m)	At Tapers (m)	Min. Height (mm)	Taper at H/S (m)	Taper at Lane (m)	At Tapers (m)	Longitudinal (m)	Method	Coned Area Length (m)	Max. Traffic Flow (veh/h)
4	B	80	3.00	60	1.2	-	200	4	750	120	12	3	750	-	-	6	12	Road Closure	500	800

NOTES:

ALL INFORMATION CONTAINED IN THIS DRAWING SHOULD BE CHECKED AND VERIFIED BY CONTRACTOR PRIOR TO ANY STAGE OF CONSTRUCTION.

ALL WORKS ARE TO BE CARRIED OUT IN ACCORDANCE WITH LOCAL AUTHORITY REQUIREMENTS AND ARE TO BE INCLUDED IN THE SITE-SPECIFIC SAFETY & HEALTH PLAN.

THE ABSOLUTE MINIMUM WIDTH ALLOWED FOR PEDESTRIANS IS 1.2m.

PEDESTRIANS TO BE PROTECTED FROM WORKS AREA BY PEDESTRIAN BARRIER SYSTEM.

CONTRACTOR TO CARRY OUT A SITE RISK ASSESSMENT PRIOR TO THE INSTALLATION OF ANY TRAFFIC MANAGEMENT PLAN TO ENSURE THAT CONDITIONS REFLECT THOSE CONSIDERED FOR DESIGN.

THIS TRAFFIC MANAGEMENT PLAN MUST ONLY BE IMPLEMENTED BY A TTOS WHO MUST CARRY OUT A RISK ASSESSMENT BEFORE IMPLEMENTATION. TTOS MUST BE IN POSSESSION OF CSOS CARD 'SIGNING, LIGHTING AND GUARDING AT ROAD WORKS' CONSTRUCTION REGULATIONS 2006.

EXACT SIGNS POSITIONS TO BE AGREED ON SITE.

ADVANCE SIGNS DISTANCE REDUCE DUE TO RISK ASSESSMENT.

ACCESS TO BE MAINTAINED TO ALL DWELLINGS / BUSINESSES AT ALL TIMES INCLUDING SPECIAL PROVISIONS TO BE MADE FOR DISABLED ACCESS.

RESIDENTS TO BE INFORMED ABOUT WORKS.

OPERATIVES TO MAINTAIN ROAD CLOSURE, LOCAL ACCESS AND INFORM DRIVERS ABOUT DIVERSION ROUTES.

LEGEND

- ● ● ● ● - TRAFFIC CONES
- - SIGN LOCATION & ORIENTATION
- ▭ - WORKS AREA
- - DIVERSION ROUTE
- - DIVERSION ROUTE
- - SITE FENCE

GARY KEVILLE TRAFFIC MANAGEMENT LTD.
Rosemount Business Park, Dublin 11, Ireland
Tel: (+3531) 667 4322; Email: info@gktm.ie
Visit us at: www.gktm.ie

CLIENT: **GLAS CIVIL ENGINEERING LTD.**

DESIGNED: BJ	SCALE: NTS	PROJECT TITLE: COLECOT BRIDGE, CO. FINGAL
DRAWN: BJ	DATE: 08/07/19	DRAWING NAME: ROAD CLOSURE - DIVERSION ROUTES
VERIFIED: MA	STAGE: CONSTRUCTION	DWG. NO.: 3419 - 00 - 04
APPROVED: MA	REV. DATE: []	REV: 0

Copyright Notes: THIS DRAWING IS THE PROPERTY OF GARY KEVILLE TRAFFIC MANAGEMENT LTD. THE DESIGN INFORMATION CONTAINED HEREIN IS STRICTLY CONFIDENTIAL. THIS DOCUMENT IS NOT TO BE USED, REPRODUCED, DISCLOSED OR CIRCULATED IN WHOLE OR IN PART WITHOUT THE PRIOR WRITTEN CONSENT IN EACH INSTANCE OF GARY KEVILLE TRAFFIC MANAGEMENT. © GKIM 2019