



**PUBLIC CONSULTATION MEETING
RACECOURSE PARK BALDOYLE**

Baldoyle Community Centre

6th June 2019



Fingal County Council
Comhairle Contae Fhine Gall

Fingal County Development Plan

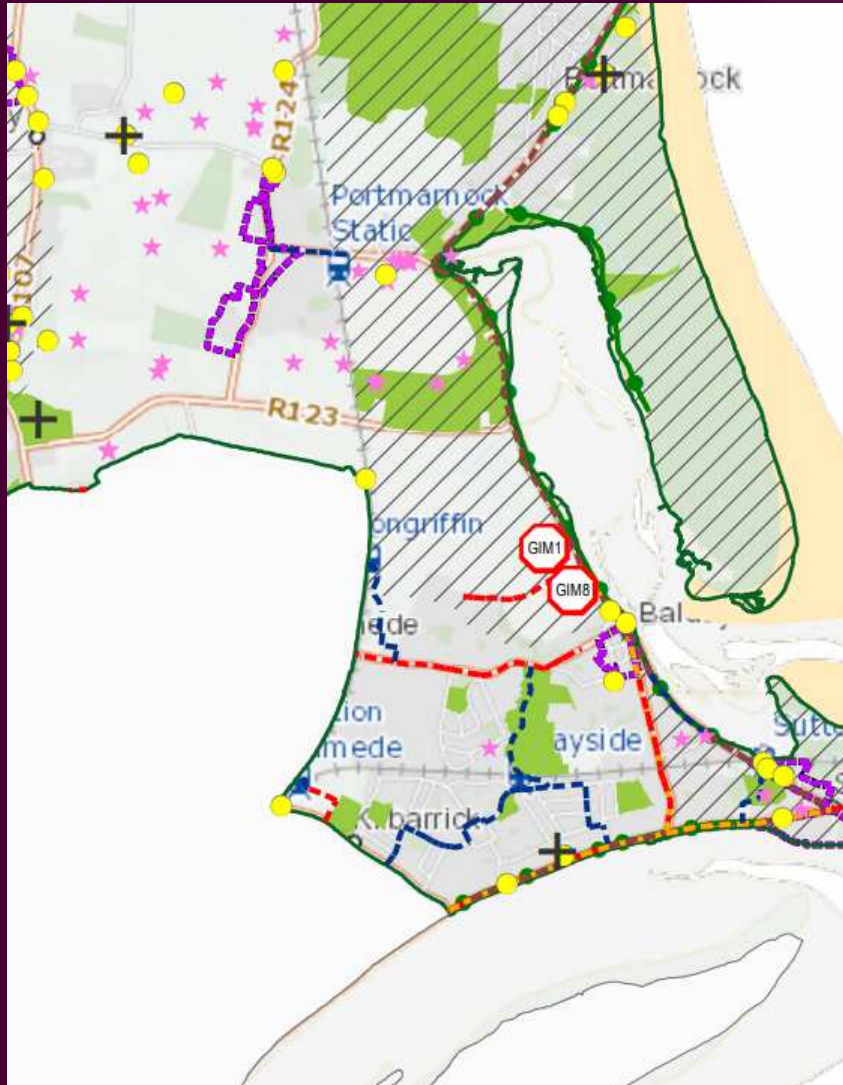


Open Space &
High Amenity
zoning



Fingal County Council
Comhairle Contae Fhine Gall

Fingal County Development Plan



- GIM1: Provide new Active Recreation Hubs in Bremore Regional Park, St. Catherine's Park, Lusk, Donabate Moore town/Old town (Swords), Drinan, Baldoyle Racecourse Park and Phoenix Park Racecourse
- GIM8: Provide new Regional Parks at the following locations: Baleally Lane, Moore town/Oldtown (Swords), Baldoyle, and Dunsink subject to Appropriate Assessment screening

Fingal
Comh



Landscape Strategy Portmarnock South LAP (adopted in 2013)

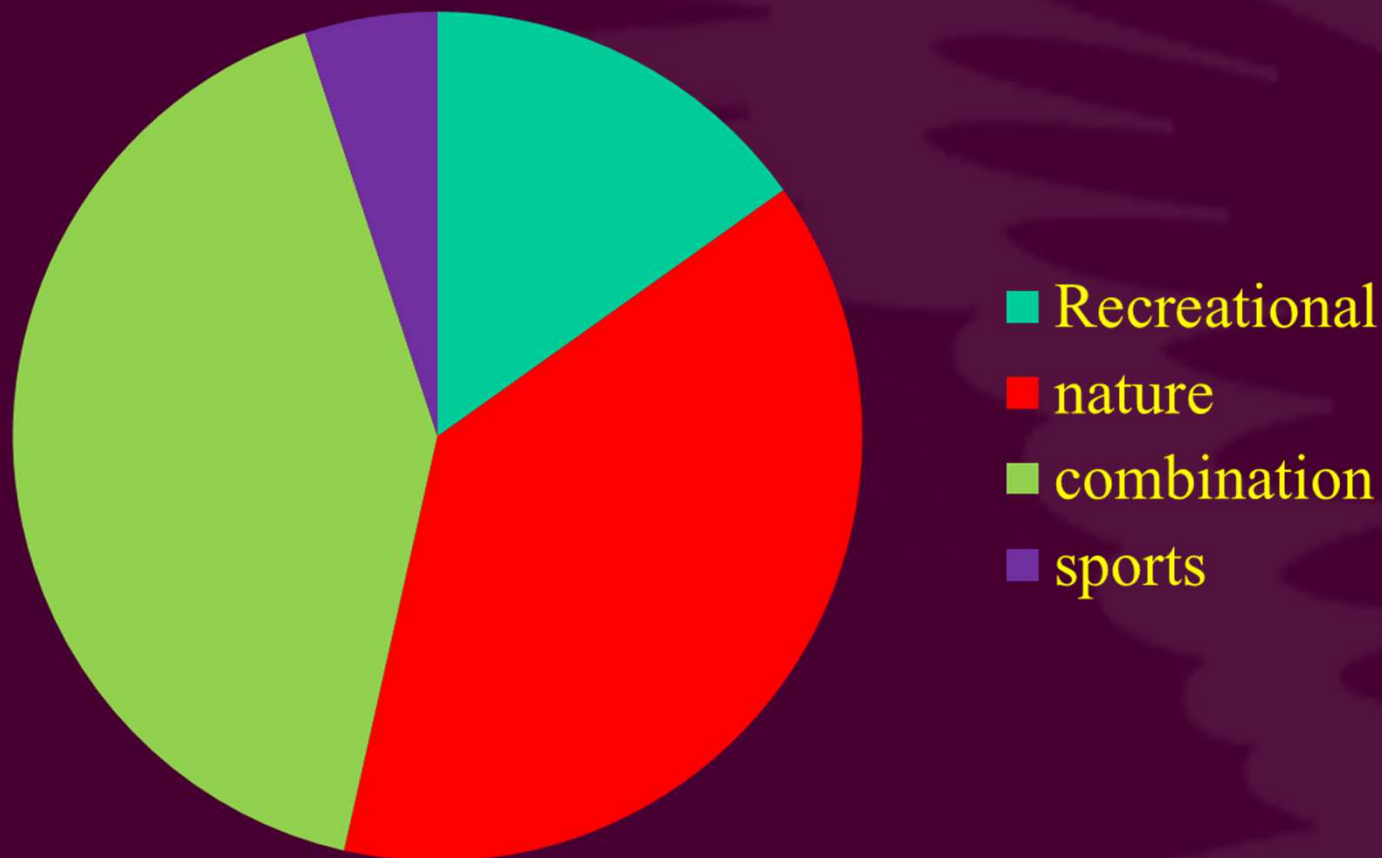


Landscape Strategy Stapolin LAP (adopted in 2013)



Fingal County Council
Comhairle Contae Fhine Gall

Feedback previous consultation: What should be the focus of the park?

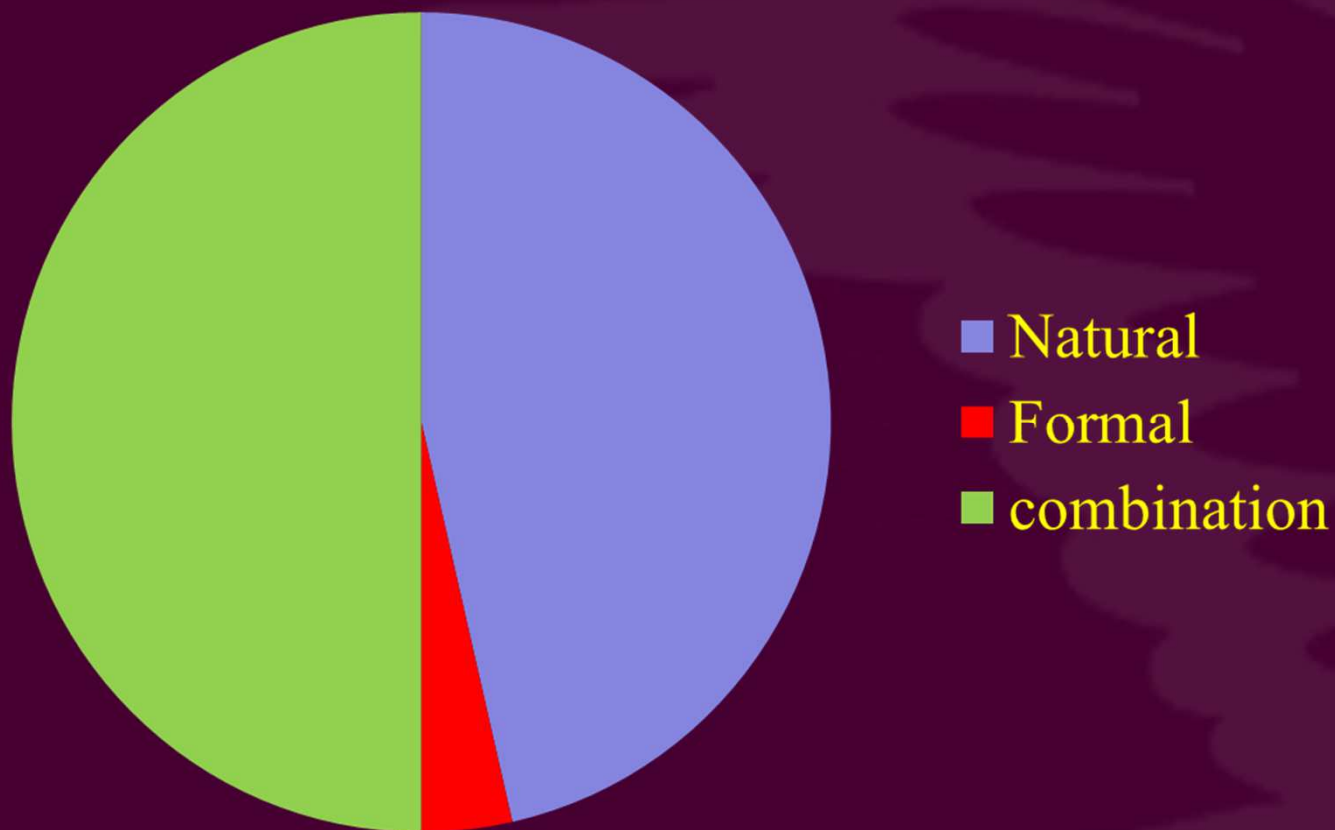




Fingal County Council
Comhairle Contae Fhine Gall

Feedback previous consultation:

What should the appearance of the park be?





Fingal County Council
Comhairle Contae Fhine Gall

Feedback previous consultation:

What would you like to do in the park?

1. Long walks > 30mins
2. Admire the views
3. Relaxation
4. Dog walking
5. Short walk < 30 mins
6. Birdwatching
7. Picknicking
8. Attend playground
9. Cycling
10. Attend events



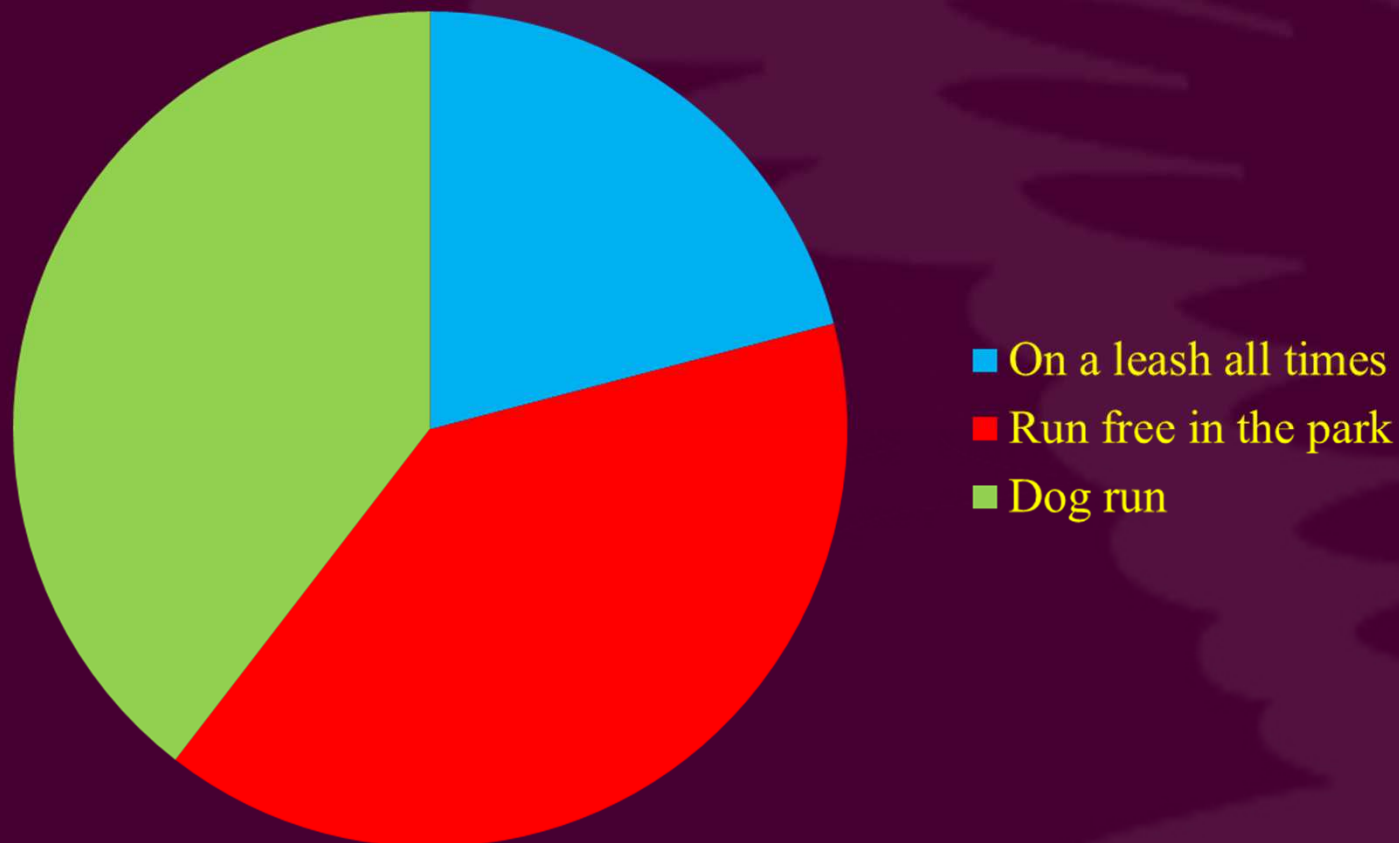
Summary of feedback previous consultation

1. Expand playground to cater for older kids
2. Provide more facilities for all ages e.g. Skate park & BMX track, pitches, bowls lawn
3. Keep the area wild.
4. More trees and woodland to break up open landscape.
5. Provide access to wild area with good pathways
6. More car parking.
7. Signage
8. Provide toilets & Coffee dock
9. No kissing gates or other access restrictions



Fingal County Council
Comhairle Contae Fhine Gall

Feedback previous consultation: Should dogs be on or off a leash in the park?



Feedback previous consultation: Preferred play equipment for playground by children

Fingal County Council
Comhairle Contae Finghlinn



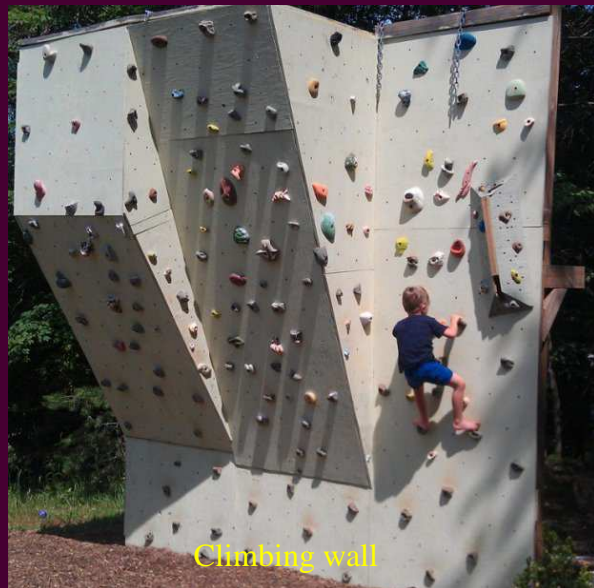
Tower and slides



Sand and water play



Zipline



Climbing wall



Trampoline



Adventure trail

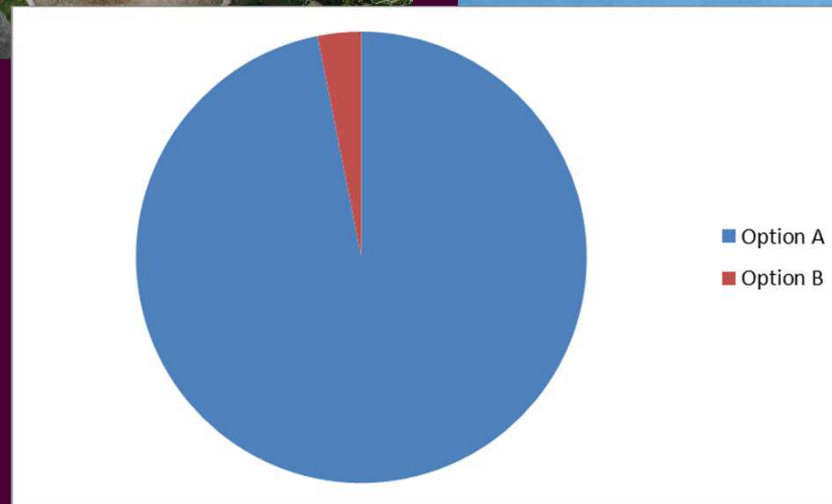
Feedback previous consultation:

What type of playground would you like to see?

Option A



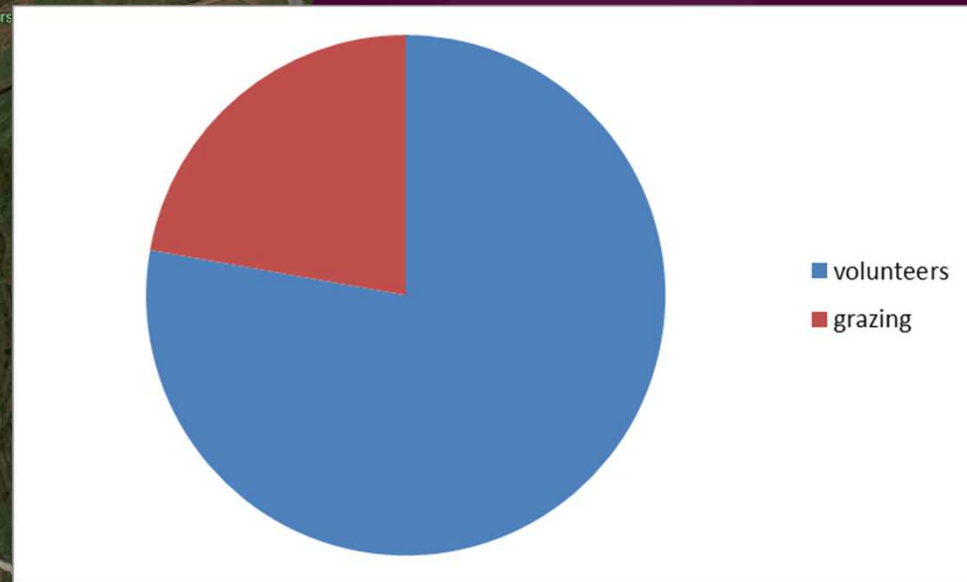
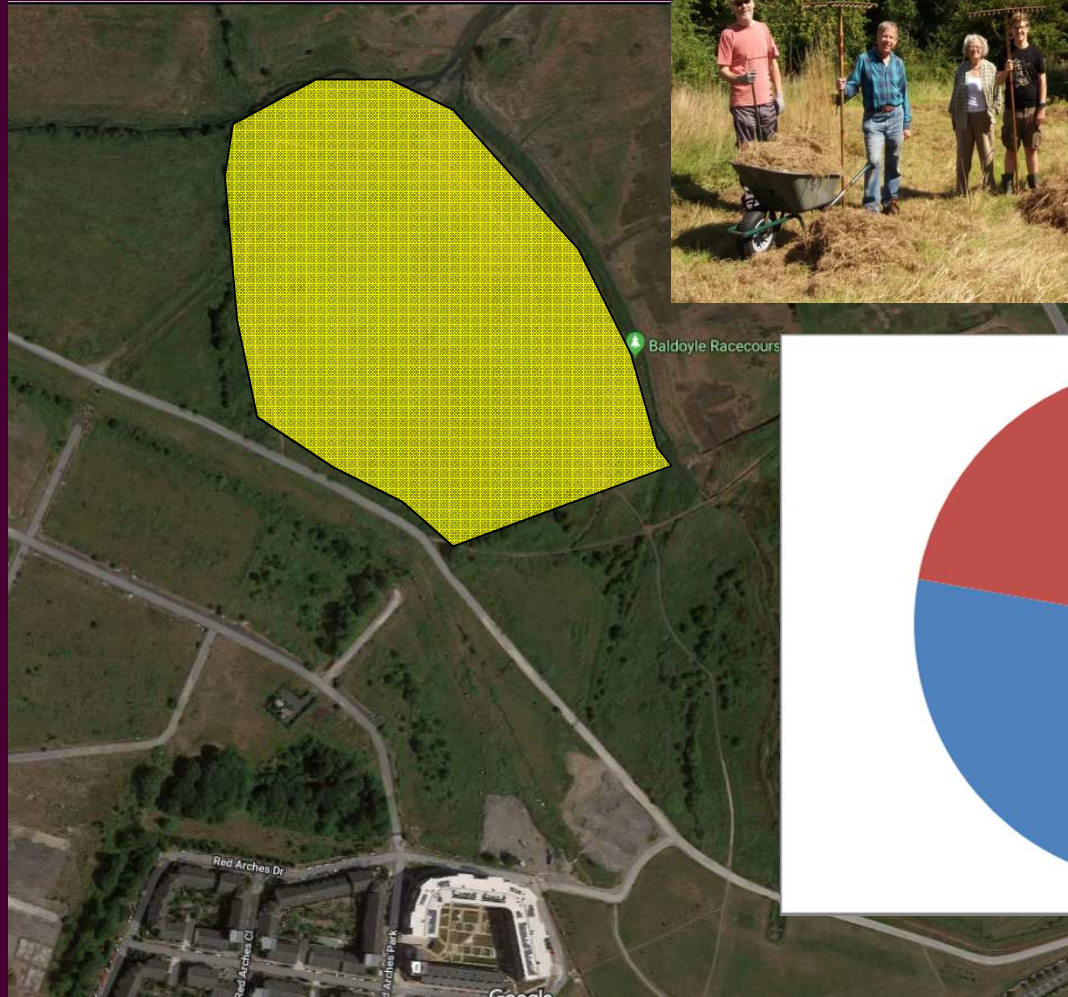
Option B





Fingal County Council
Comhairle Contae Fhine Gall

Grazing or volunteers to maintain meadow?





Fingal County Council
Comhairle Contae Fhine Fhailgí

Feedback previous consultation:

What Tourism facility should be provided?

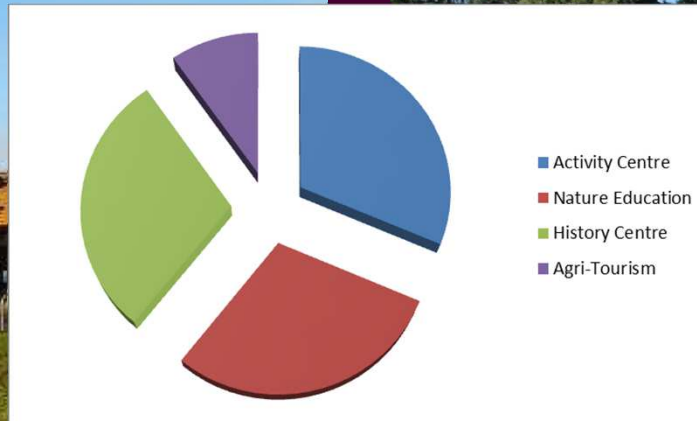
Activity centre

Viking experience



Nature Education centre

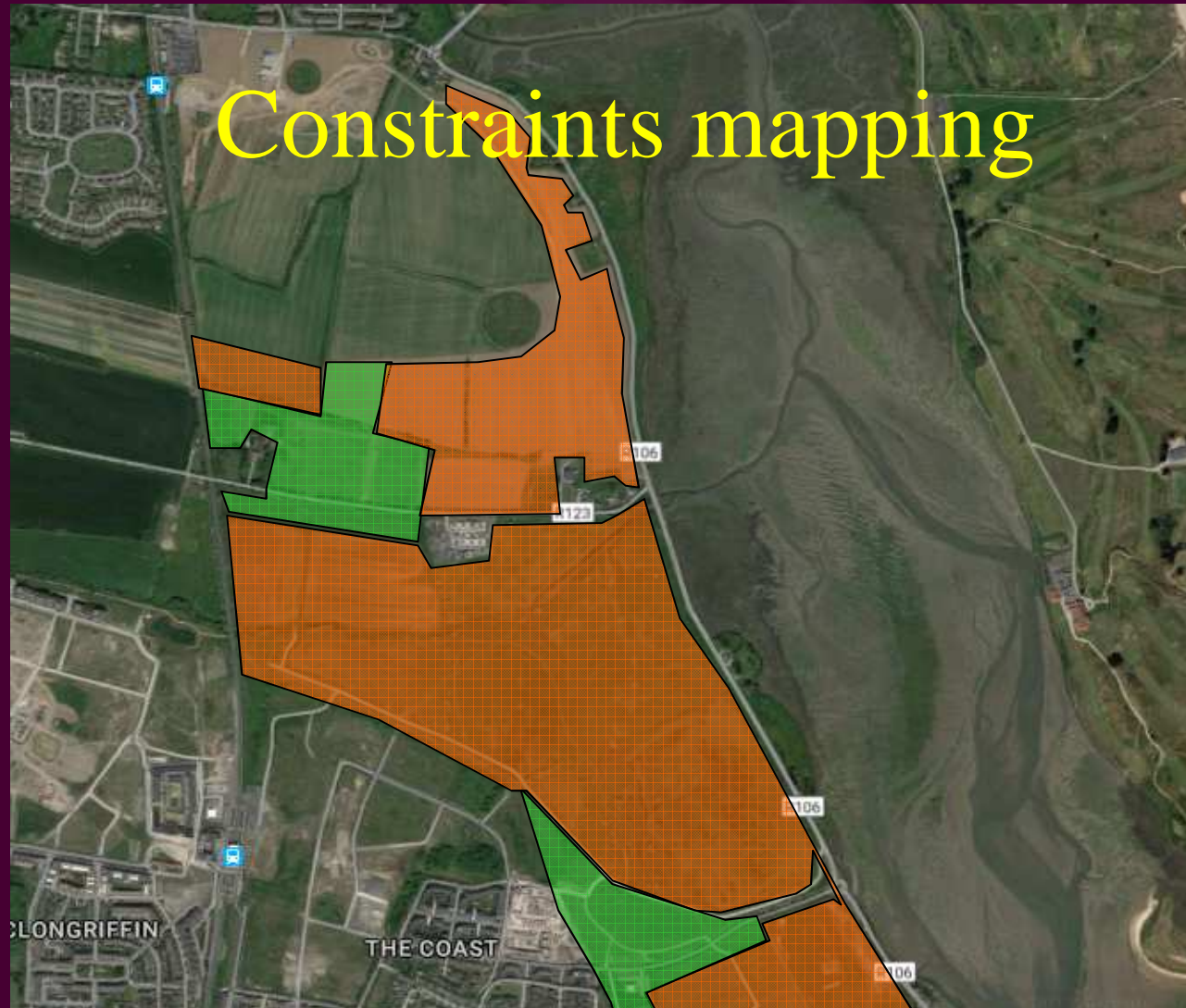
Agri-tourism





Fingal County Council
Comhairle Contae Fhine Gall

Constraints mapping

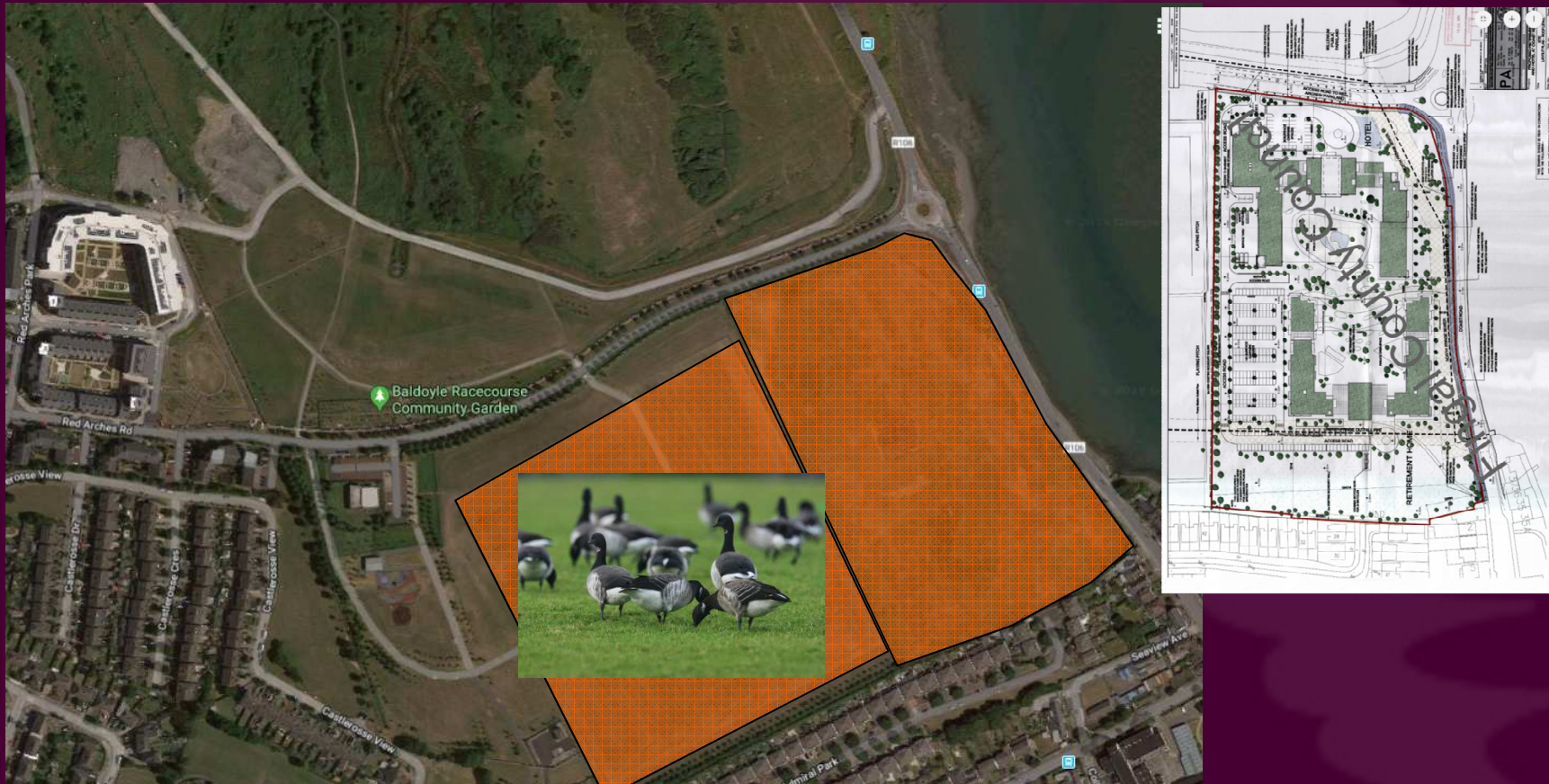


Total park is approx 100ha, but development of recreational facilities is limited to areas shown in green. Various constraints such as archaeology, flooding, nature conservation and existing planning permissions are relevant to this site.



Fingal County Council
Comhairle Contae Fhine Gall

Constraints mapping



Pitches are feeding grounds of Brent Geese from Baldoye Bay. Removal of feeding grounds not permitted under EU Habitats Directive. Field along coast road has planning permission for hotel and nursing home.



Fingal County Council
Comhairle Contae Fhine Gall

Constraints mapping



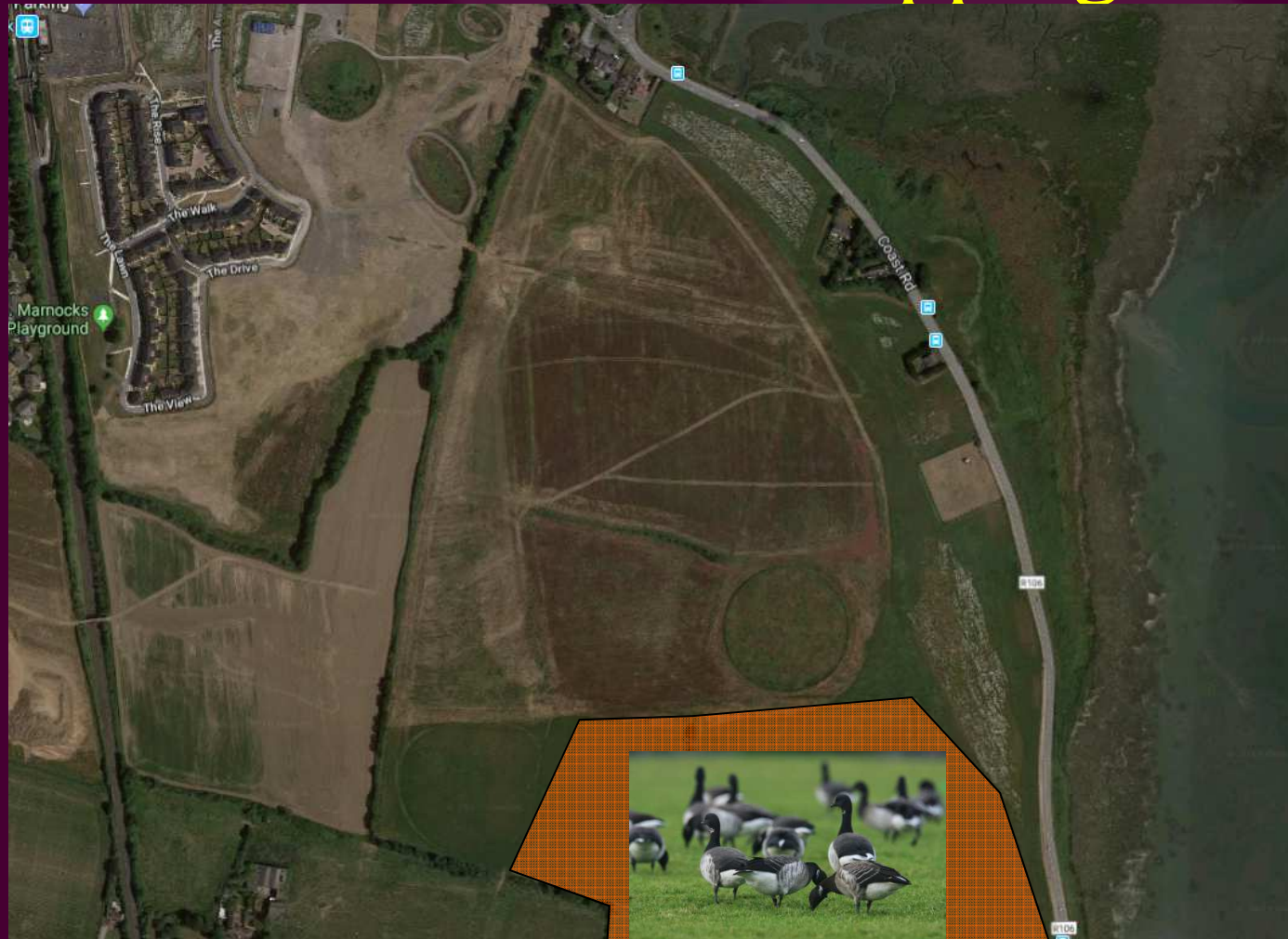
Area designated as a Special Area of Conservation under EU Habitats Directive. To be maintained for rare plants and estuarine birdlife. Southern area set aside for nature conservation to facilitate greenway development through SAC.

Google



Fingal County Council
Comhairle Contae Fhine Gall

Constraints mapping



Alternative feeding grounds provided for migratory birds and native farmland birds as part of planning conditions for Portmarnock South development



Fingal County Council
Comhairle Contae Fhine Gall

Flooding



Only pathways and grass pitches can be developed in floodplain, no other more intensive recreational facilities. Infilling of floodplain not permitted.



100m

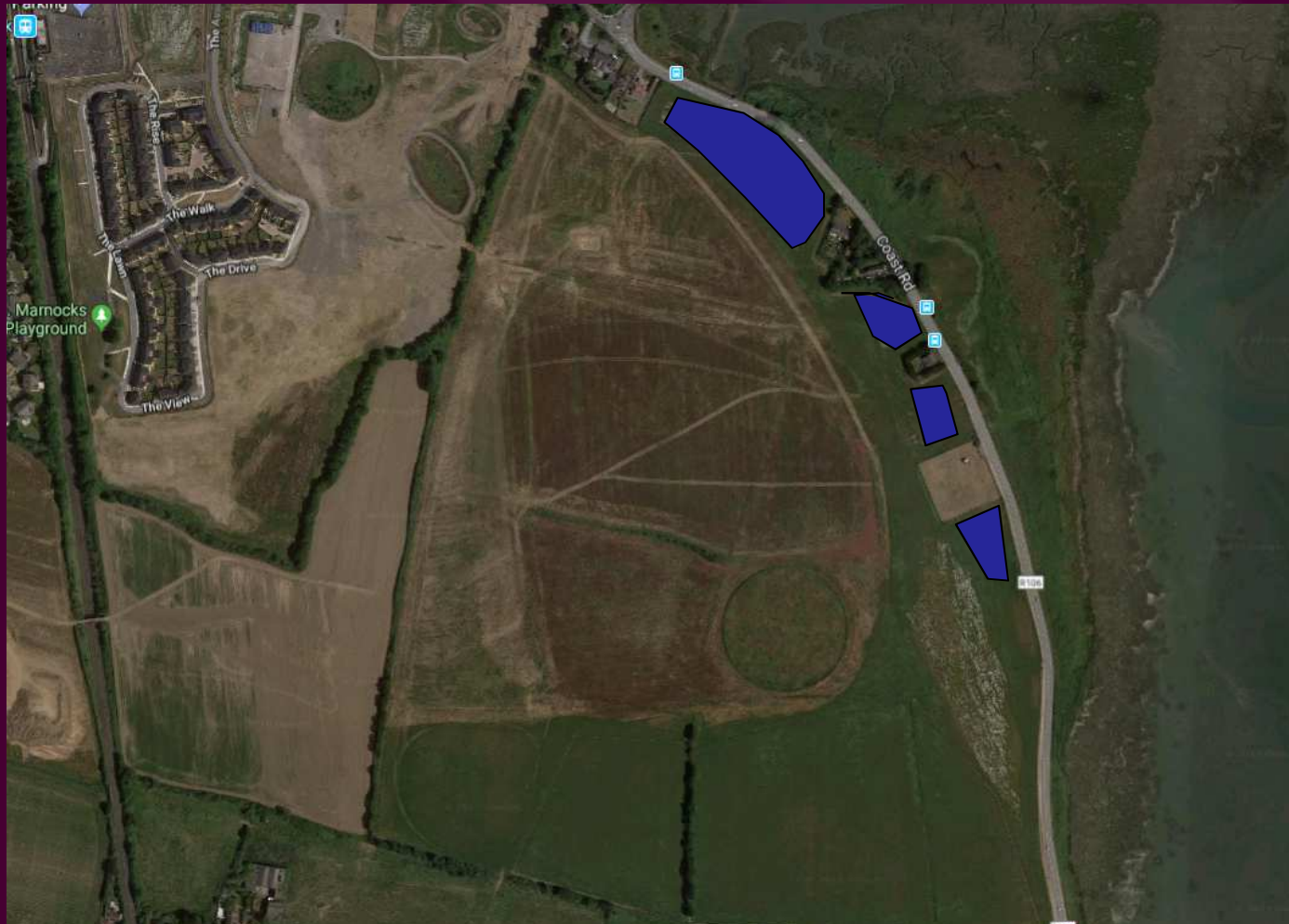
400ft

724 487 757 760 761 5 426 Metres

© Ordnance Survey Ireland / Source: Esri / Digit



Flooding

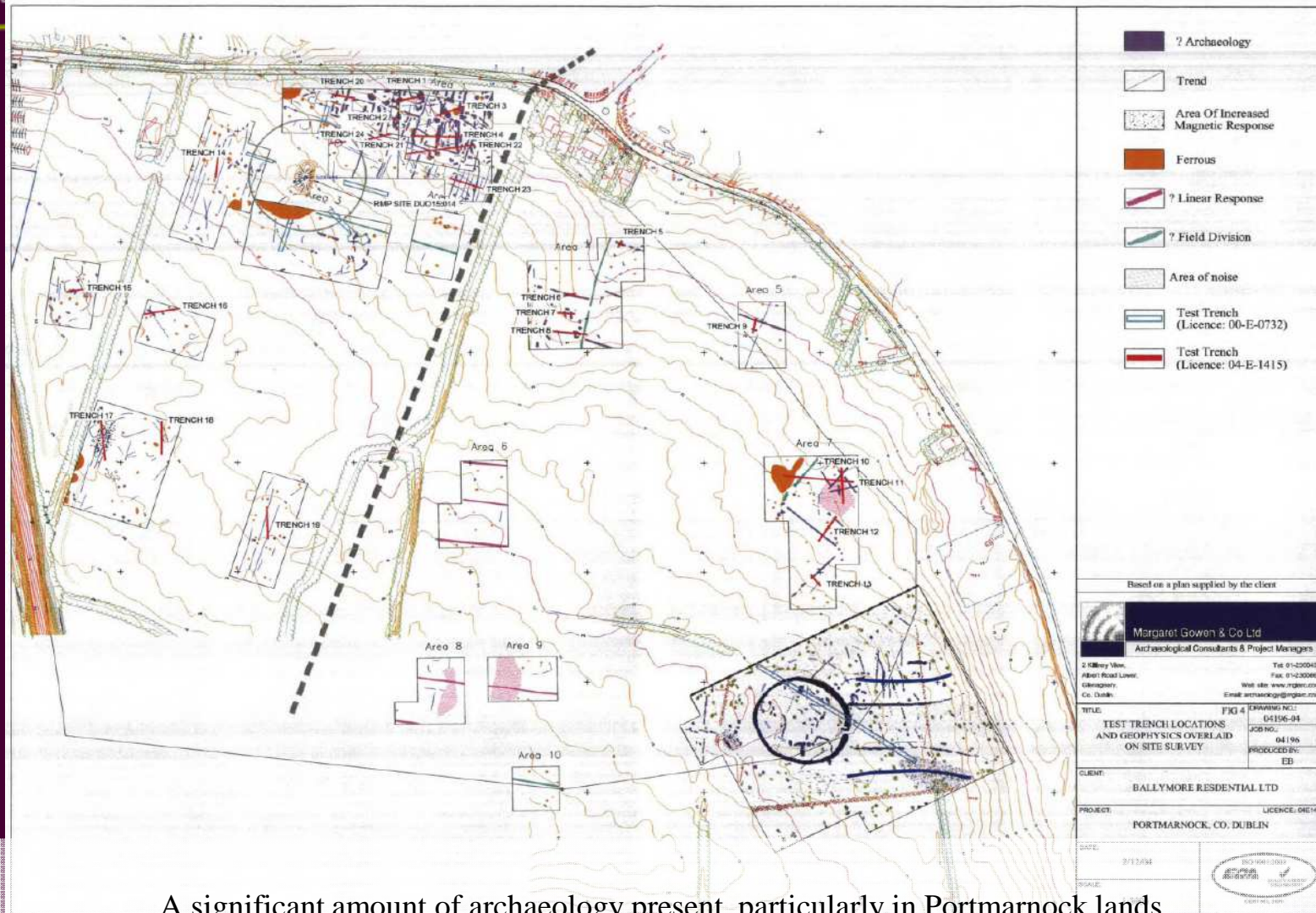


SUDS pond and other wet sites in winter. Not suitable for sites for intensive recreational use



Fingal County Council
Comhairle Contae Fhine Gall

Archaeology



A significant amount of archaeology present, particularly in Portmarnock lands.



Fingal County Council
Comhairle Contae Fhine Gall

*Please see design drawings
for details of the proposed
park layout and facilities*



Fingal County Council
Comhairle Contae Fhine Gall

Next Steps

- Consider results public consultation and make changes & improvements to the design where appropriate and possible
- Finalise detailed design and supporting documentation
- Planning Application for park development to An Bord Pleanála in Q3 2019



Fingal County Council
Comhairle Contae Fhine Gall

Contact Details

Hans.visser@fingal.ie