

RACECOURSE PARK

LANDSCAPE APPROACH



EXTENT OF SITE

The site for the Baldoyle Racecourse Park proposal spans between Baldoyle and Portmarnock and comprises of the area between Grange Road and Station Road, segmented by the Moyne Road and Red Arches Road.

FCC CONCEPT PLAN - KEY AREAS

WALKING AND CYCLING ROUTES

PLAYING PITCHES

ATTENUATION PONDS

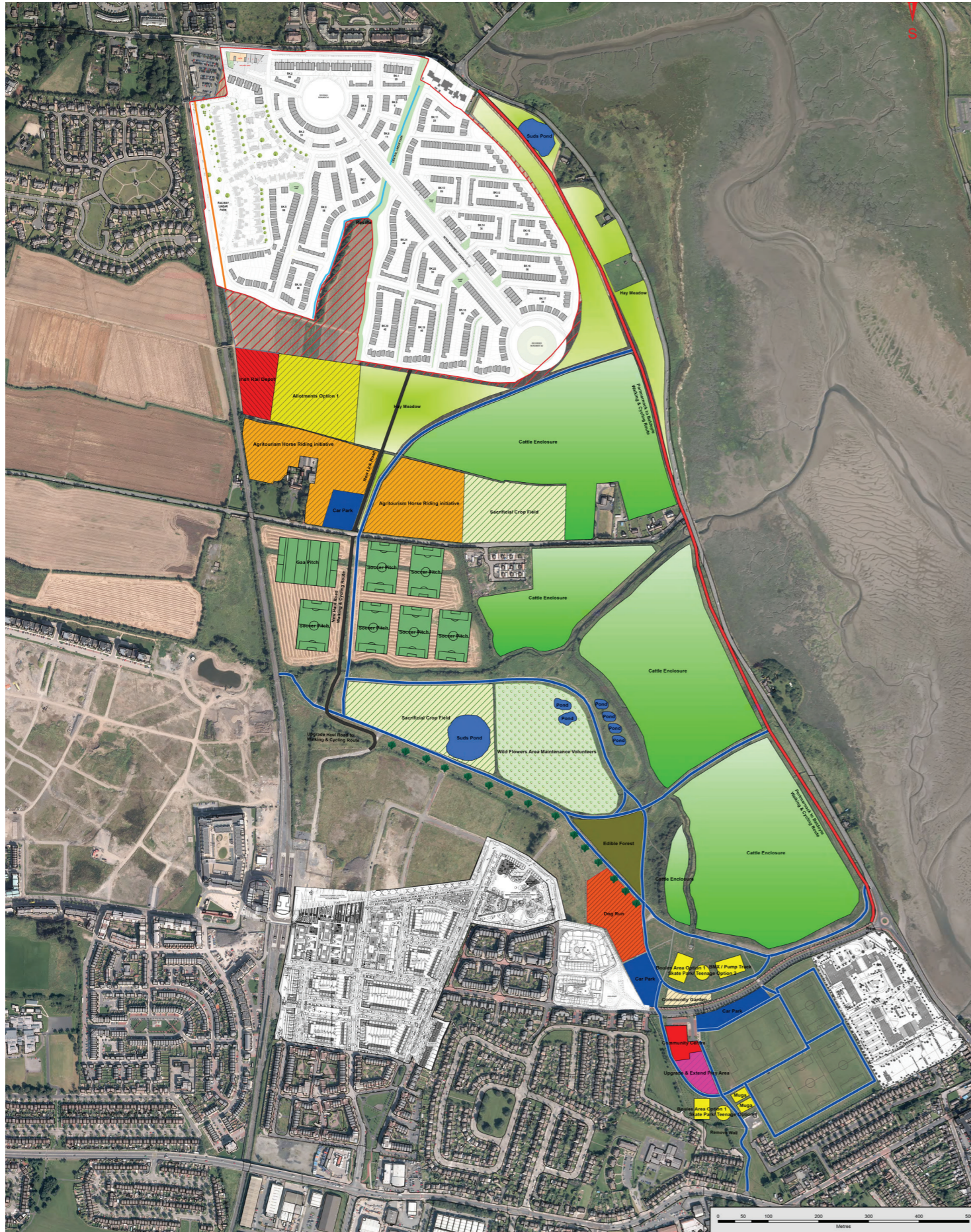
ACTIVE PLAY AREAS (SKATE PARK, BMX, PLAY EQUIPMENT, MUGA)
CATTLE ENCLOSURES

DOG RUN

HORSE RIDING INITIATIVE

SACRIFICIAL CROP AREA

EDIBLE FOREST





LANDSCAPE CHARACTER

LINKAGES AND INTERACTIONS

A proposal which respects or enhances EXISTING links as much as possible.

GREEN LINKS: Grazing compounds, Special Areas of Conservation, Trees/Hedgerows, Rivers/Streams, Wetland/Marsh retained and enhanced given the high ecological value of these elements.

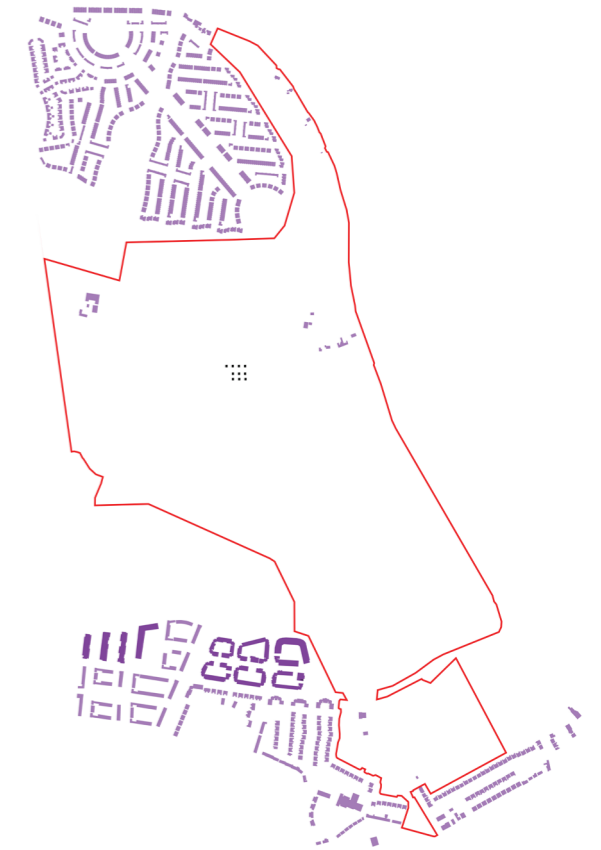
PATH NETWORKS: Analysis of existing path network - existing desire lines/Informal routes

NEW COASTAL CYCLE ROUTE

EXISTING HERITAGE: Cultural Heritage such as the Racecourse, Archaeology (ring enclosure)

DEVELOPMENT: Area is framed by several developments built or in construction. Analysis of the urban development cements the importance of the proposed park will adjacent users.

MEDIUM RISE
 LOW RISE



Development adjacent to area (site outline in red)

NETWORKS

EXISTING GREEN NETWORKS HEDGEROWS/TREES - IDENTIFICATION OF....



.....ENHANCEMENT OF

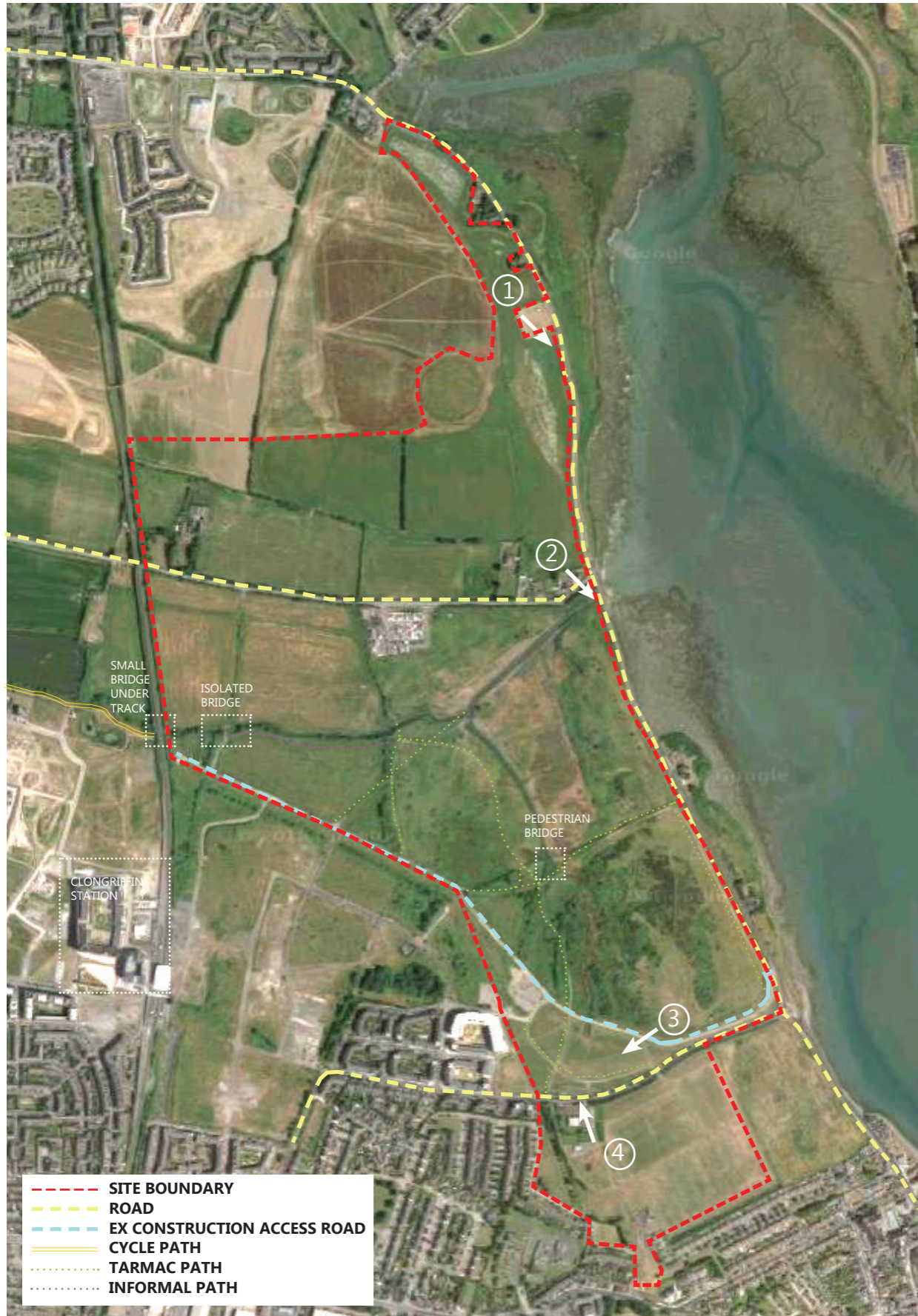


The area already displays an abundance of natural beauty.

- Open views,
- Natural flora,
- Hedgerow and Tree networks
- should be managed and incorporated into the overall design.
- enhanced under supervision of project ecologist.

NETWORKS

EXISTING PATHS/ROADS - IDENTIFICATION OF....



- SITE BOUNDARY
- ROAD
- EX CONSTRUCTION ACCESS ROAD
- CYCLE PATH
- TARMAC PATH
- INFORMAL PATH

.....ENHANCEMENT OF



① LOCATION OF COASTAL GREENWAY



② MOYNE ROAD



③ EX CONSTRUCTION ROAD



④ RED ARCHES ROAD - ENTRY TO SITE OF PROPOSED COMMUNITY CENTRE



TIMBER WALKWAY, WEATHERING STEEL



STONE, WEATHERING STEEL

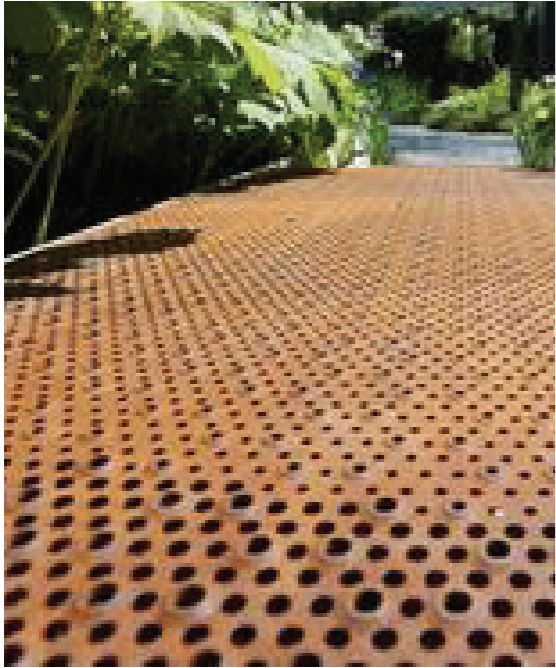


TIMBER - DESIGN REFERENCE TO SITE HISTORY

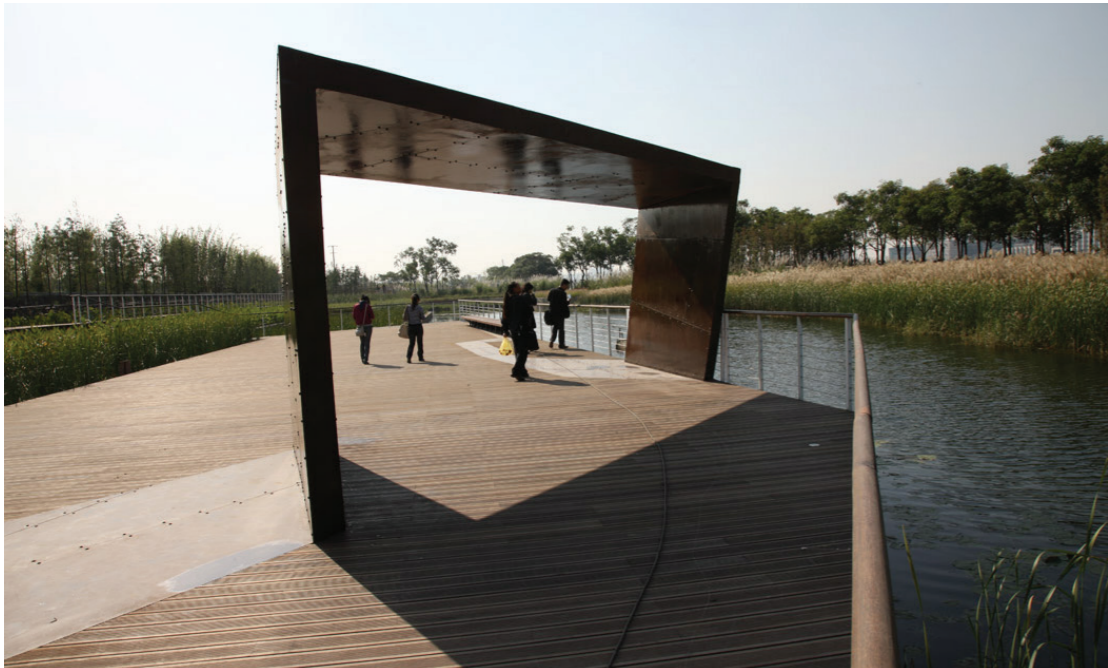
PROPOSED MATERIALS - CONCEPT IDEAS

PATHS/ROADS MATERIALS

The tonality of the area has influenced the material palette proposed in the current phase and maintained for future interventions on order to maintain design cohesion throughout the park as it evolves.



ENTRANCES-STRUCTURES-SHELTERS-WAYFINDING



Located to the main entrances

Providing linkage - extent of the park is broken into two parts by the Red Arches Road.

Provide a framing threshold to the park and act as wayfinding elements for those within the park.

Shelter from the unpredictable Irish climate.

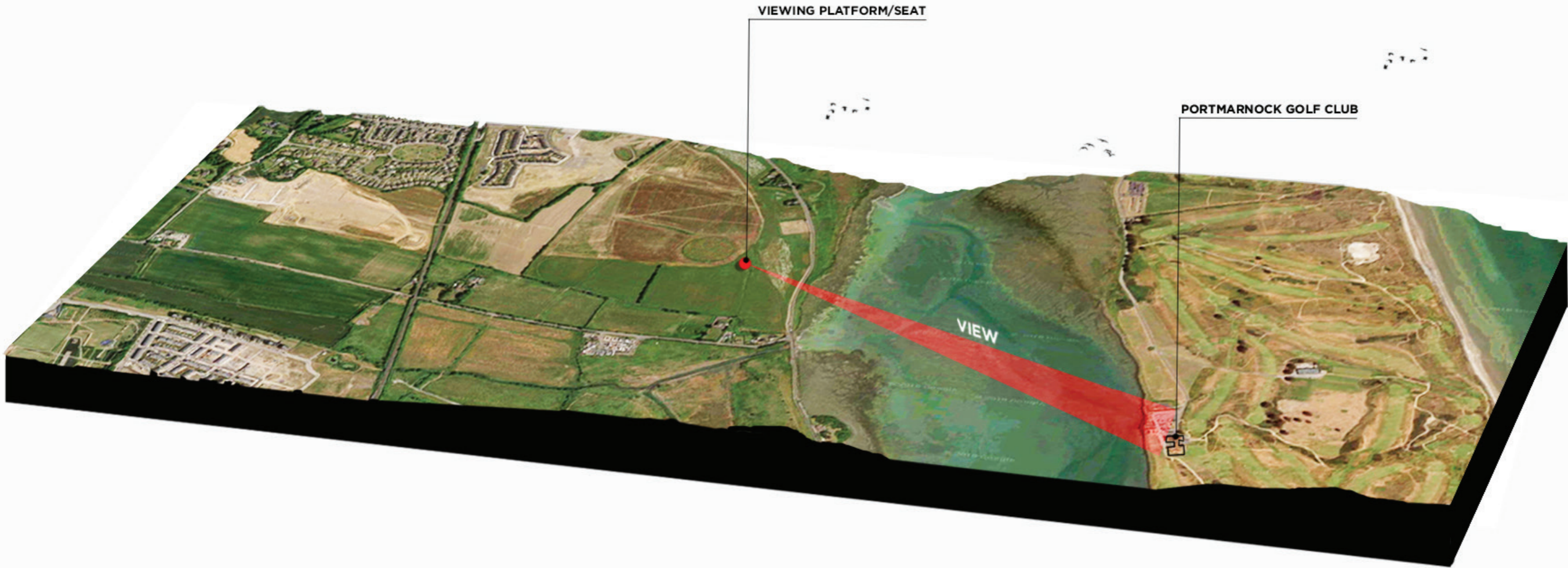
Signage - similar materiality - interpretation and wayfinding device.

Community assists with the production of stories and history of the site and its environs.

Other elements
Pergolas or frames - design of which tie into the sites history. For example, viewing stands which reference the former race course.



SEATING - VIEWPOINTS - CONCEPTS



Seating elements - South Facing
Reference to the old stands from the former Baldoyle Racecourse.

WAYFINDING - SITE REFERENCE - EXAMPLE

RELEVANT INFORMATION/DATES - SIGNAGE

Heritage of the site through the use of signage which highlights certain key dates relating to occasions such as the Baldoyle Derby.

MAY 1860 - BALDOYLE DERBY INAGURATED (1.5 MILES LONG)

BALDOYLE MEETINGS: NEW YEAR, SPRING (ST. PATRICK'S DAY), MAY, WHITSUNTIDE, JULY, AUGUST, FIRST AUTUMN AND OCTOBER

THE EIGHT FENCES AT BALDOYLE: GILLS' HILL, REDDY'S, THE REGULATION, BOURKE'S, THE WATER, ROONEY'S HILL, RICKARD'S AND THE STAND FENCE

LAST RACE ON SATURDAY 26TH AUGUST 1972

1985 - DEMOLITION OF THE GRANDSTAND



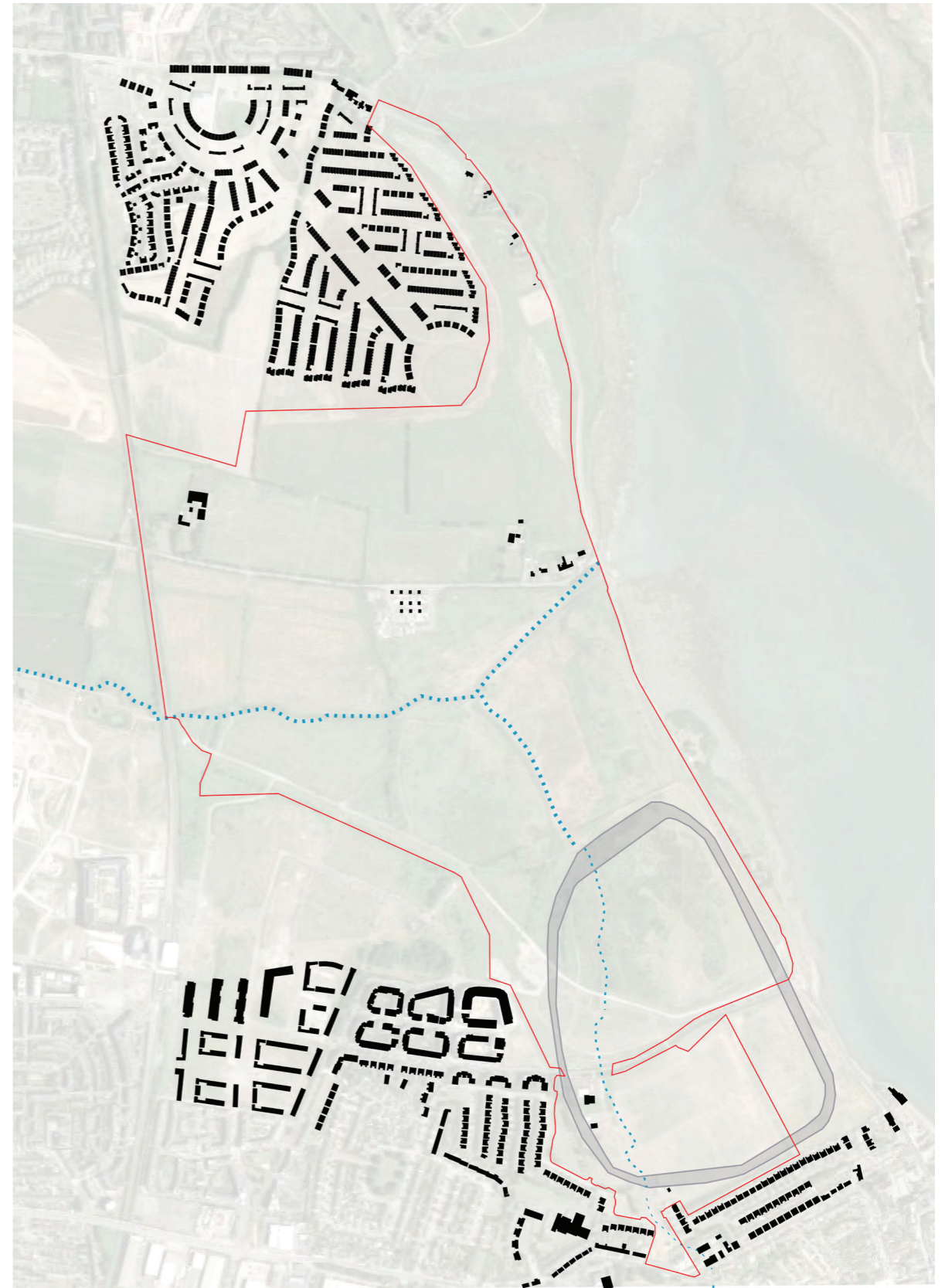
CGI of sign with date inscription

RACECOURSE OUTLINE - TRACING OF...

Analysis from the past maps shows the location of the former racecourse, which we will reference on our proposals as a formal path or as a tracing in the ground.



Historic 25 inch map



Past location of racecourse

SIGNAGE



PRIMARY ROUTES



INTERSECTIONS
(Rainham Marsh Public Access - Thames estuary, Purfleet)

SECONDARY ROUTES



ETCHED INSERTIONS

As secondary paths may feel slightly isolated, the insertion of boulders can contribute to the feeling of a space which still forms part of the overall scheme - etching on these elements can provide information or directionality



WAYFINDING AND INFORMATION PANELS

Signage which takes advantage of the workability of corten steel - which can be laser cut to offer hints of the history of the site and provide information about the ecological and historical importance of the site



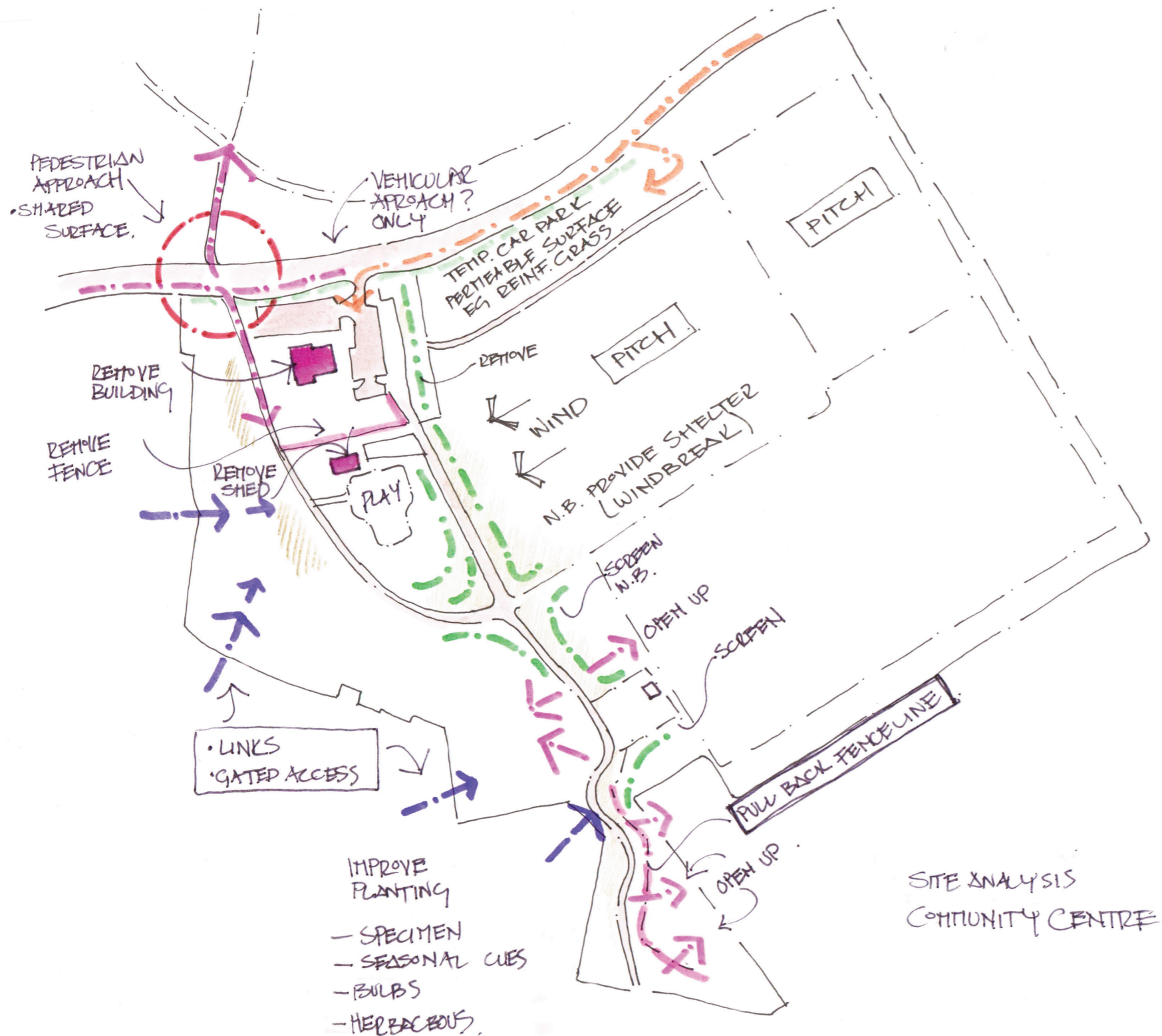
DISTANCE
(Rainham Marsh Public Access - Thames estuary, Purfleet)

Wayfinding to provide direction but to have minimal opposition to views along the coastal route

SOUTH OF RED ARCHES ROAD

AREA SOUTH OF RED ARCHES ROAD

SITE ANALYSIS



Strengths

- Existing Infrastructure - Pitches, Parking, Play areas, Open space
- Proximity of space to housing - linkages, easily accessible
- Existing planting provides an element of maturity to space

Weaknesses

- Exposure - Wind factor - eastern side
- Parking - lack of - pitch users, visiting teams
- Restricted range in activities - Area used as a route rather than place to stay?
- Lack of diversity in planting - few flowers, fruit, berries, little seasonal colour.
- Pinch point to south of site - Approach unwelcoming - Enclosure - 'run through' effect, a place not observed - encourages anti social activity
- Dominance of pump station and associated barriers
- Unused space adjacent to developments
- Lack of facilities catering for early teen age bracket - only pitch related
- Lighting/cctv

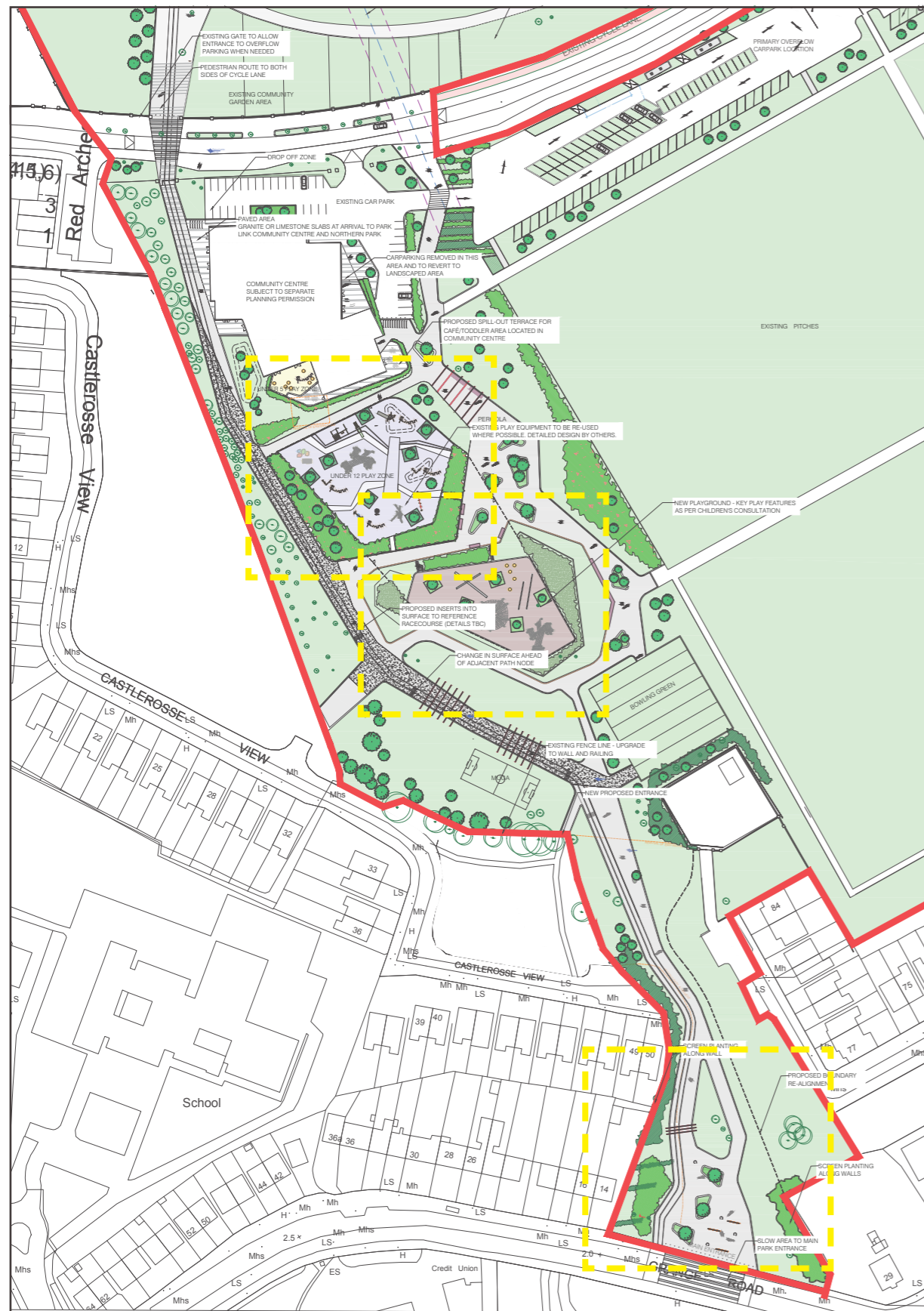
Opportunities

- Placemaking - Design could reflect local history and culture
- Existing infrastructure - Good base for building on wider connections both within the site and to wider area .
- Provision of additional parking facilities will increase footfall to park and pitches. A used park is a safe park.
- Additional screening - Minimise wind exposure through landform - More comfortable environment for walking and relaxing.
- Screen pump station - Provide permanent structures - Remove storage containers - Create a space that is less temporary and thus discourage antisocial activity.
- Southern entrance - Widen access through the pushing back of boundaries to remove 'run through' effect.
- Parks entrances that are not enclosed by buildings/barriers create a more welcoming environment to families and individuals - use it as a resource.
- Natural barriers - planters and frame/sculpture elements. Non Linear paths - barriers are designed into the landscape and so inappropriate use of paths is discouraged.
- Clearly marked cycle and pedestrian paths.
- Additional seating to increase passive surveillance by local community

Threats

- Fear of consequences of design change to park - will it create more problems?
- Maintenance - proving a landscape that can be easily kept by local authority.
- Pleasing all users - different groups value different activities or resources.

AREA SOUTH OF RED ARCHES ROAD



FRAMING ELEMENT TO ENTRANCE/THRESHOLD



WINDING ASPHALT PATH WITH WIDE KERBING



'NATURAL' PLAYGROUND

- IMPROVE SOUTHERN APPROACH
- SIGNAGE AND FRAMES
- NEW NATURAL PLAY AREA
- BESPOKE PLAY SCULPTURE
- UPGRADE EXISTING PLAY AREA
- LINKS TO COMMUNITY CENTRE
- PARKING

CGI

SOUTHERN RESIDENTIAL AREA - OPENING UP OF APPROACH



ACTIVITY AREAS

DETAILED DESIGN



BESPOKE PLAY AREA

Thematic playgrounds that fascinate and inspire both adults and children.

Designed in conjunction with community consultation.

Specialist firms such as Monstrum specialise in a bespoke playsculpture design reflecting local ideas and history/culture.

Bespoke play areas could apply to the younger play zone due to their proposed location closer to the future community centre.



NORTH OF RED ARCHES ROAD

NORTHERN ENCLOSURE - BRINGING THE RING ENCLOSURE INTO THE PARK

CONCEPTUAL SKETCH AND PRINCIPLES



ENCLOSURE SITE

LATE PRE HISTORIC ENCLOSURE
ENTRANCE FEATURE
TRACING OF 2 SPLAYED LINEAR
ELEMENTS

REMOVE RAILINGS

TRACING APPROACH
LONG CONCRETE STRIPS SET IN
GRASS

VERTICALITY SCULPTURE

INFORMATION PANELS IN
GROUND

RIVERSIDE PATHS AND PICNIC AREAS



What is a stumpery?

A stumpery traditionally consists of tree stumps arranged upside-down or on their sides to show the root structure. By allowing the root of a tree stump to be exposed to the elements, the soft wood decays and leaves a propeller like hard wood structure.

The pieces are arranged artistically and plants are encouraged to grow around or on them.

The stumps can be used individually or attached together to form a structure such as a wall or arch.

The first stumpery was built in 1856 at Biddulph Grange and they remained popular in Victorian design. The stumpery at Biddulph Grange consists of stumps placed into a 3.0 m wall either side of a path and used as a scaffold for the growth of ferns.



The goal of a stumpery is the creation of habitat; secondarily comes the arrangements that display the arresting architecture of the roots. Habitats resulting from stumperies are likely to include slow worms, stag beetles and small mammals who like to burrow down into the dark and fertile soil around the stumps.



Smaller plants thrive within the wood arrangements. They require very little intervention to proliferate widely and do not suffer from being eaten by animal wildlife. The unique topography of the piled stumps makes dozens of pockets with conditions suitable for ferns (deep shade, fast draining wet soil)



Toads are often found in such environments as they like to use redundant burrows left by other mammals. The slow breakdown of the wood returns useful compounds back to the soil. It provides suitable environments for the succession of insects and small mammals that will live in and on the wood, and in the soil immediately beneath it.

STRUCTURES - BRIDGES

RAISED WALKWAY THROUGH ECOLOGICALLY SENSITIVE AREAS



PATH NETWORKS - SAMPLE TREATMENT



The design shown would have to be augmented to include NRA Guidelines

- Segregation of cyclists and pedestrian use
- Grass central median to highlight segregation

SKATE PARK AND ACTIVITY AREAS



Location : North of Red Arches Road

Safe and easy access of surrounding housing developments. in association to other elements of a similar category.

Adapted for the practice of all urban sports such as skateboarding, rollerblading and BMX.

Adapted to all levels of practice, from the beginner to the professional.



DOG PARK AND RUN



Location : North of Red Arches Road

Area: 9704m²

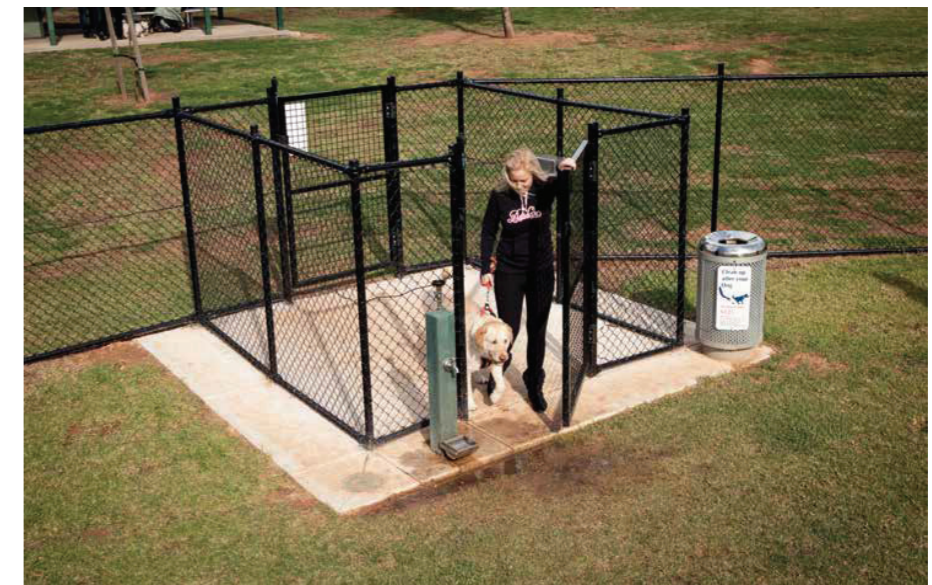
- Entry points with double-gates
- Fence alongside planting
- Surface materials matching the activity zones : sand, grass or rubber,
- Segregated zones for different dog sizes and characters.
- Amenities such as drinking water fountains, Seating, bins
- Agility Area: A central open space within the enclosure provides dog equipment such as jumps or tunnels.



SIGNAGE



RUBBER MOUND - AGILITY



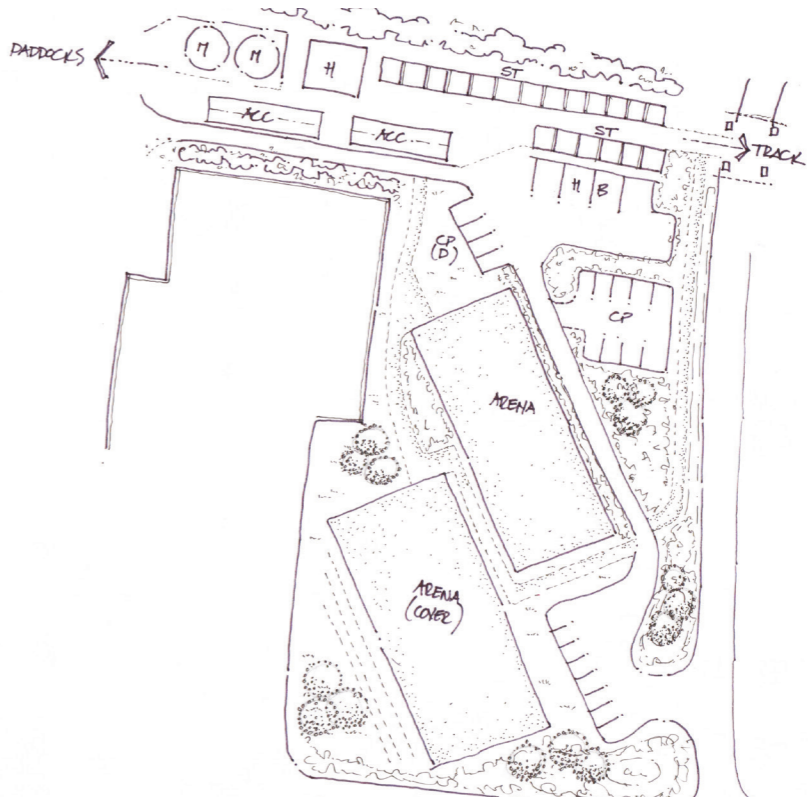
DOUBLE GATE ENTRANCES

EQUESTRIAN ZONE



The initial concept for the equestrian zone proposes stables, visitor accommodation, main accommodation/office, storage areas, turnout paddocks, two arenas (potentially one of them covered to ensure year round use) and designated parking areas.

The design would work with the existing grade where possible to minimise the amount of disturbance to the natural grade and control storm water flow. Structures and pathways would also adjust to respect existing hedgerows and tree cover. Trekking paths would lead from the centre through the rest of the site. There would be gathering spaces and small garden spaces to invite visitors to relax while watching the horses train in the beautiful park setting.



WETLAND BOARDWALK



Grand Voyeux Regional Nature Reserve



Grand Voyeux Regional Nature Reserve



Vhankaupunginlahti Bay Nature Reserve

The purpose of a park is to create several experiences for the visitor.

The park will easily attract locals who would normally use the site as a walking route.

However, through the proposed use mapping and detailed design of Racecourse Park we aspire to draw a wider range of visitors to use that park and offering them the opportunity to enjoy their surroundings without having a detrimental impact on the current ecological and environmental status.

We can also carefully manage and improve the existing situation, which in some areas can be viewed as degraded adding further value to the park. The proposal of a boardwalk element which is capable of 'floating' over the terrain, withstanding fluctuating watertable levels and offering the visitor the opportunity of close observation of the environment with minimal damage.

In consultation with the project hydrologist and ecologist would locate the structure would be located and designed to weave over habitats which have been managed and reinforced through careful analysis.

VIEWING PLATFORM

INTENT



Platform associated with attenuation ponds to reflect materiality of other proposed structures (e.g. corten)



Materiality of upstand - corten and walking surface - corten or concrete strips to allow for permeability



CONCEPT VISUALISATION OF BOARDWALK - SIMILAR PROJECT (MORE WOODLAND LOCATION)



STOP OFF POINT, THE STANDS, SOUTH FACING SEATING

DETAILED DESIGN



Resting Points are an important element in any park formal or naturalistic in design. It offers the visitor a directional cue as well as an opportunity to pause and enjoy their surroundings. In the case of Racecourse Park we believe it should also offer a sculptural quality and be design on a scale appropriate to the setting.

There are many cues to inspire a design concept at this location. We have chosen however to take cues from the history of the site and one of the more recent functions of the the south eastern portion of the site, that from which the park takes its name.

- The simple design of 'viewing stands', facing south to take advantage of the sun.
- The materiality of the sculptural yet functional elements will be subdued allowing seamless blending with the landscape
- Plaques relating Racecourse stories or figures of note can be incorporated into the element.

Rainham Marsh Public Access

