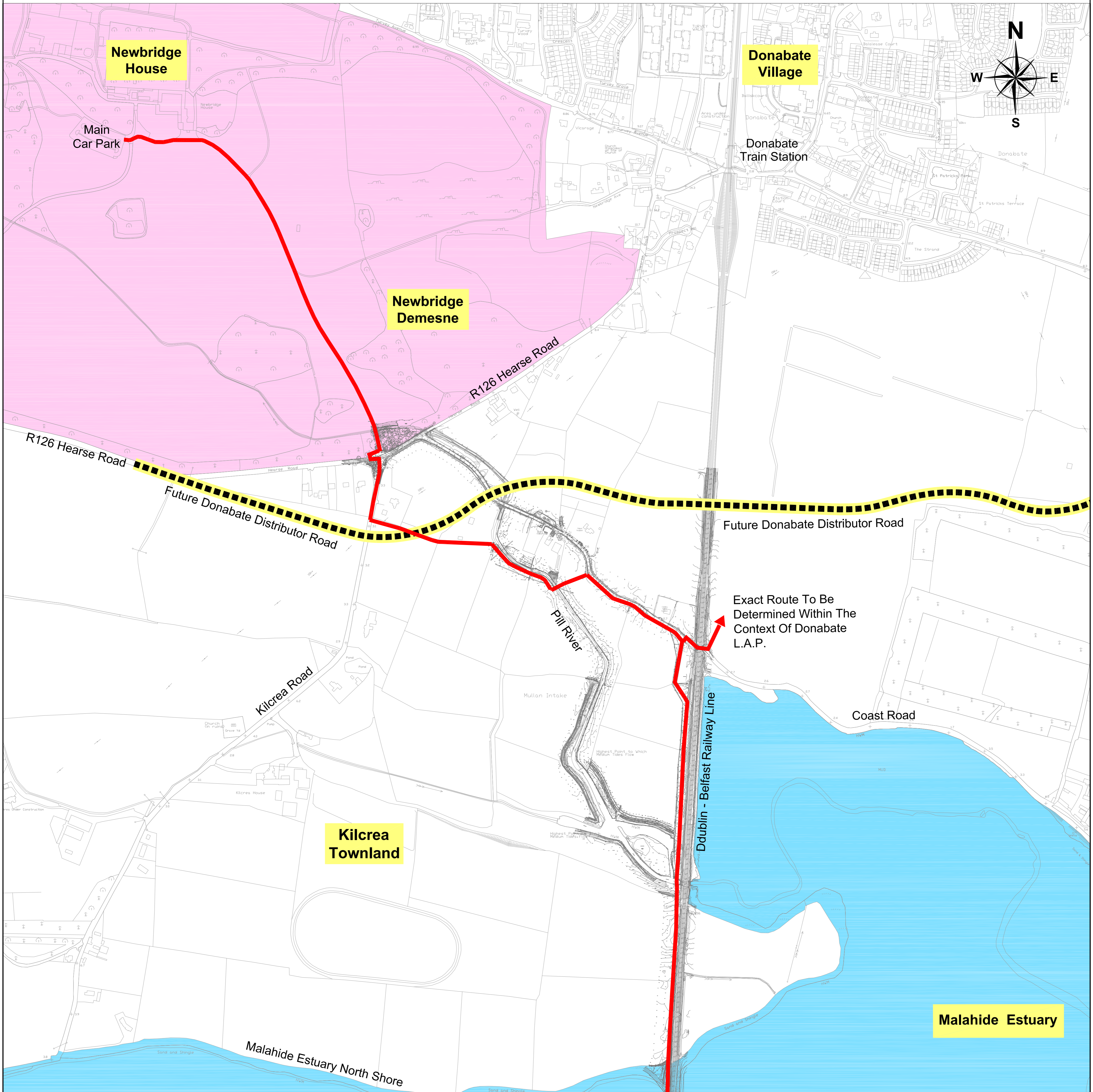


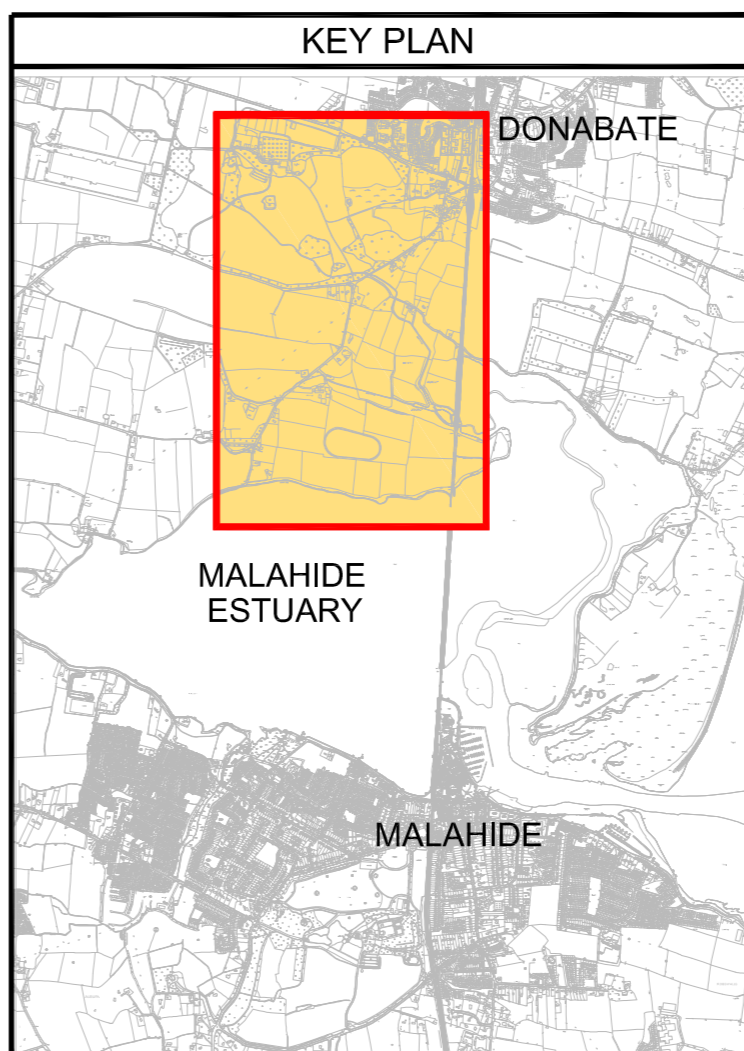
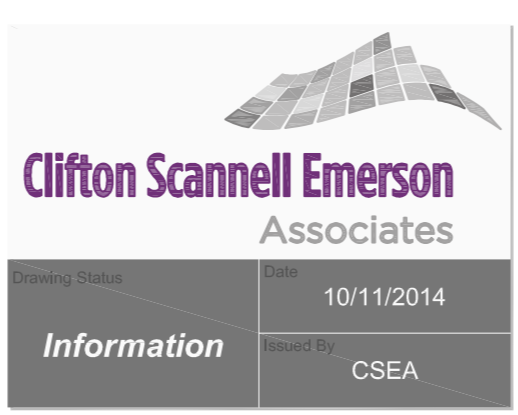


# Broadmeadow Way



**Legend:**

- Preferred Route
- Connection To Donabate
- Future Donabate Distributor Road
- Newbridge Demesne
- Malahide Estuary



Revision	Description	Initials	Date
A	GENERAL	NH	03/11/2014

**Clifton Scannell Emerson Associates**

Clifton Scannell Emerson Associates Limited  
Consulting Engineers,  
Seafort Lodge,  
Castledawson Avenue,  
Blackrock, Co. Dublin,  
Ireland.

T. +353 1 288 5006  
F. +353 1 283 3466  
E. info@csea.ie  
W. www.csea.ie

Client	Fingal County Council
Project	Broadmeadow Way
Dwg. Title	Preferred Route Sheet 3
Drawn By	NH
Date	May 2014
Checked by	PM
Scale	NTS @ A1
Dwg. Progress	
Dwg. No.	12_160_198_A