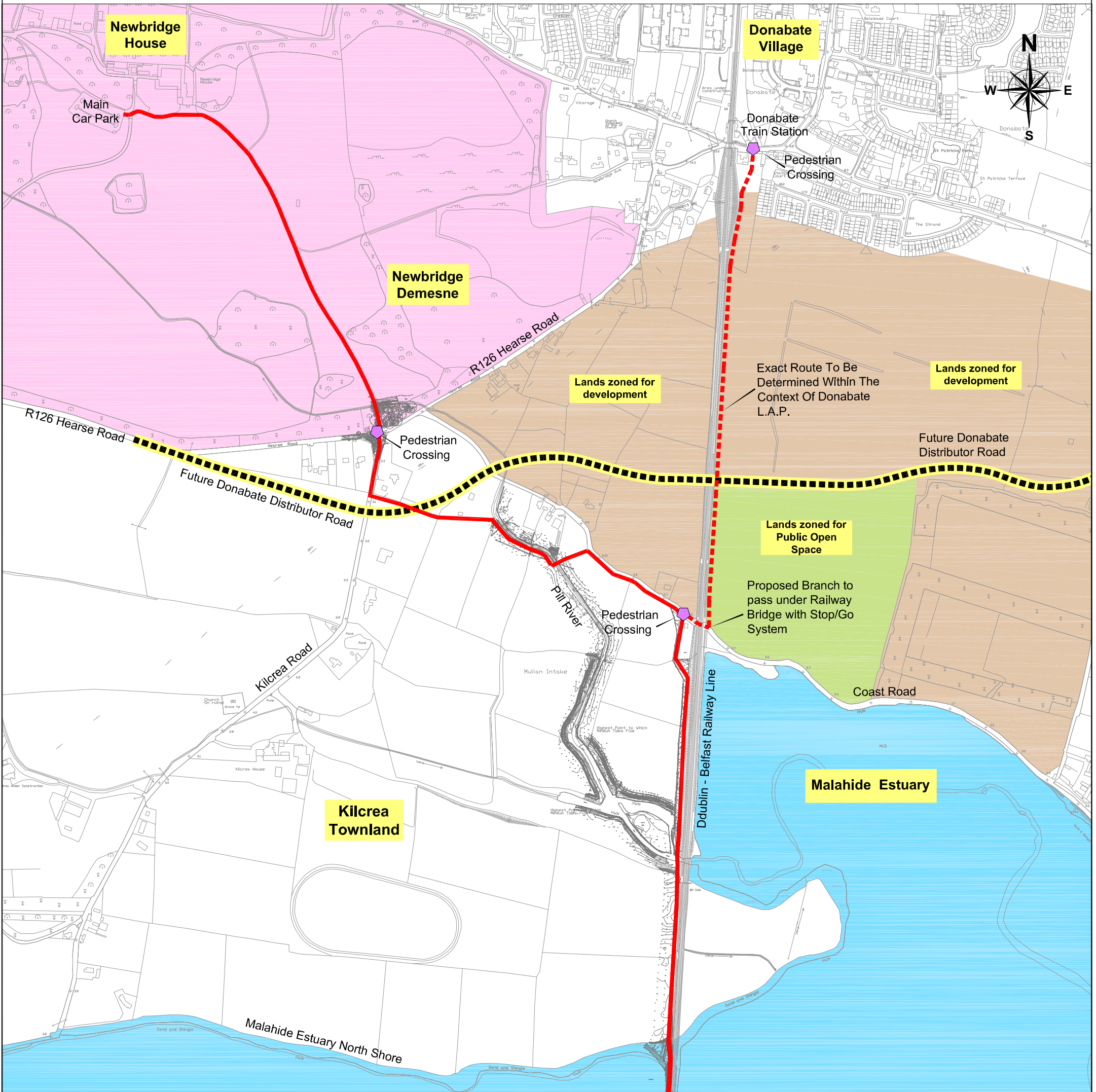


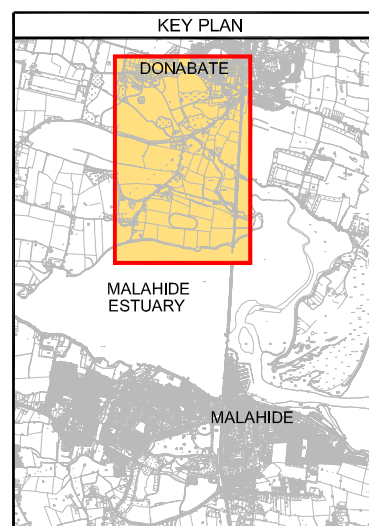
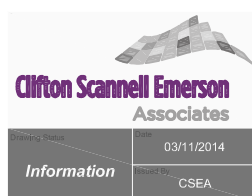


# Broadmeadow Way



### Legend:

- Emerging Preferred Route
- Branch No. 4
- Proposed Crossings
- Future Donabate Distributor Road
- Local Amenities (Newbridge Demesne)
- Lands Zoned (For Development)
- Lands Zoned (For Public Open Space)



| A        | GENERAL     | NH       | 03/11/2014 |
|----------|-------------|----------|------------|
| Revision | Description | Initials | Date       |

**Clifton Scannell Emerson Associates**  
Clifton Scannell Emerson Associates Limited  
Consulting Engineers  
Seaton Lodge,  
Castledawson Avenue,  
Blackrock, Co. Dublin,  
Ireland.  
T. +353 1 288 5006  
F. +353 1 283 3466  
E. info@csea.ie  
W. www.csea.ie

|               |   |       |          |
|---------------|---|-------|----------|
| Client        | Fingal County Council   |       |          |
| Project       | Broadmeadow Way   |       |          |
| Dwg. Title    | Route Options Post Public Consultation<br>Preferred Branch Connection To Donabate |       |          |
| Drawn By      | NH  | Date  | May 2014 |
| Checked by    | PM  | Scale | NTS @ A1 |
| Dwg. Progress |   |       |          |
| Dwg. No.      | 12_160_188_A  |       |          |