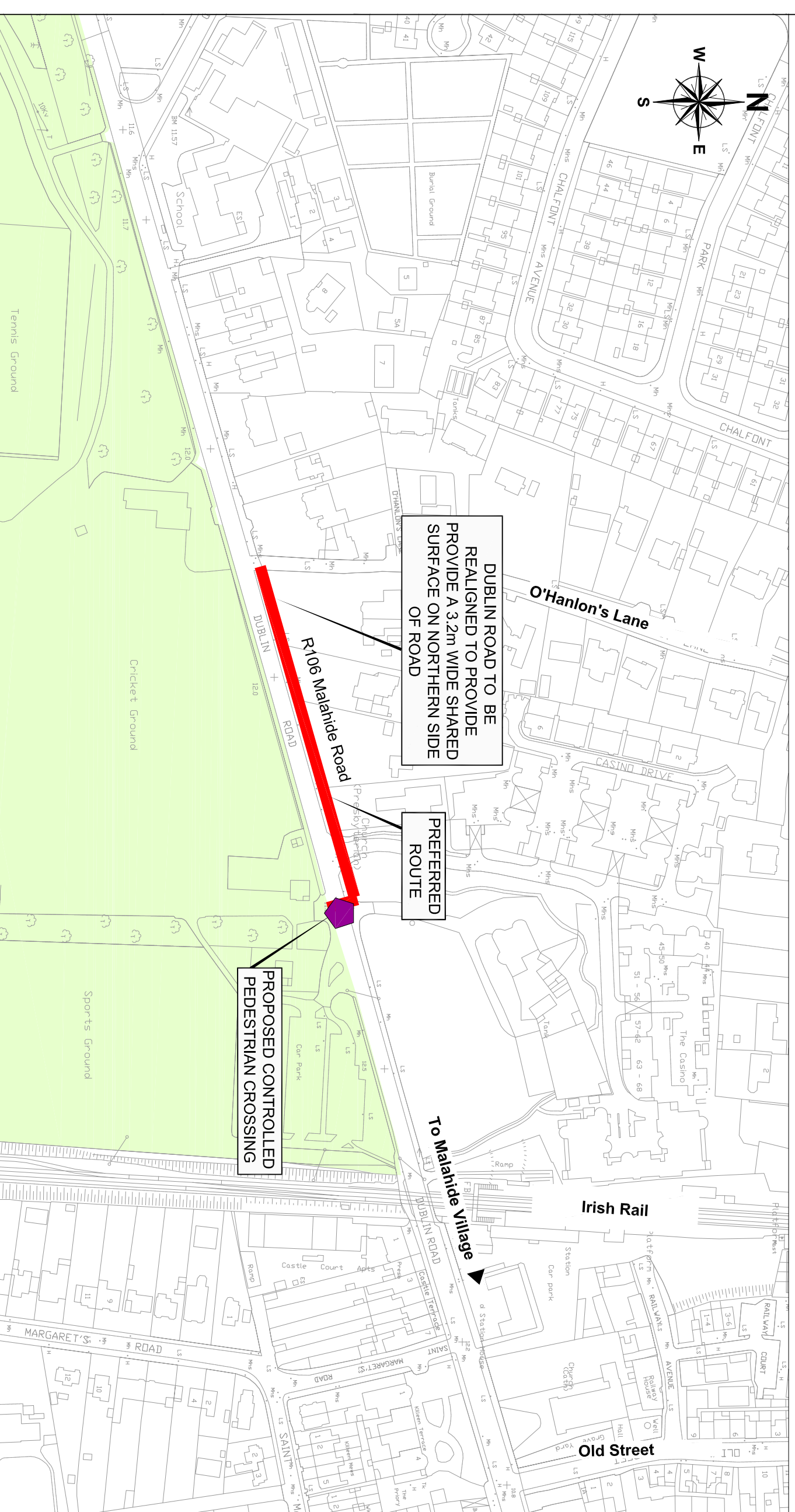
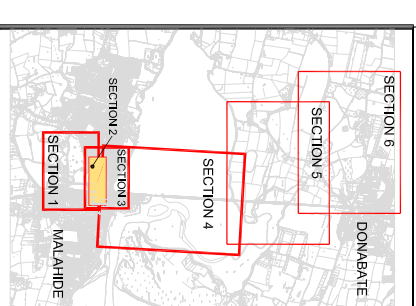


Broadmeadow Way - Emerging Preferred Route - Section 2

R106 Dublin Road, Malahide



- Legend:**
- Section 2 Preferred Route
 - Proposed Crossings
 - Local Amenities (Malahide Demesne)



Revision	Description	Initials	Date



Clifton Scannell Emerson Associates
 Clifton Scannell Emerson Associates Limited
 Consulting Engineers
 Seaford Lodge
 Chalkdam Avenue,
 Blackrock, Co. Dublin,
 Ireland.
 T. +353 1 298 5078
 F. +353 1 293 3465
 E. info@cse.ie
 W. www.cse.ie

CLIENT: FINGAL COUNTY COUNCIL

PROJECT: BROADMEADOW WAY
EMERGING PREFERRED ROUTE

DESIGN TITLE: SECTION 2

Drawn By: NH Date: DECEMBER 2013

Checked by: PM Scale: 1:500 @ A1

Dep. Progress

Doc. No.: 12_160_156