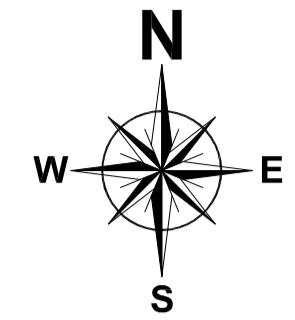


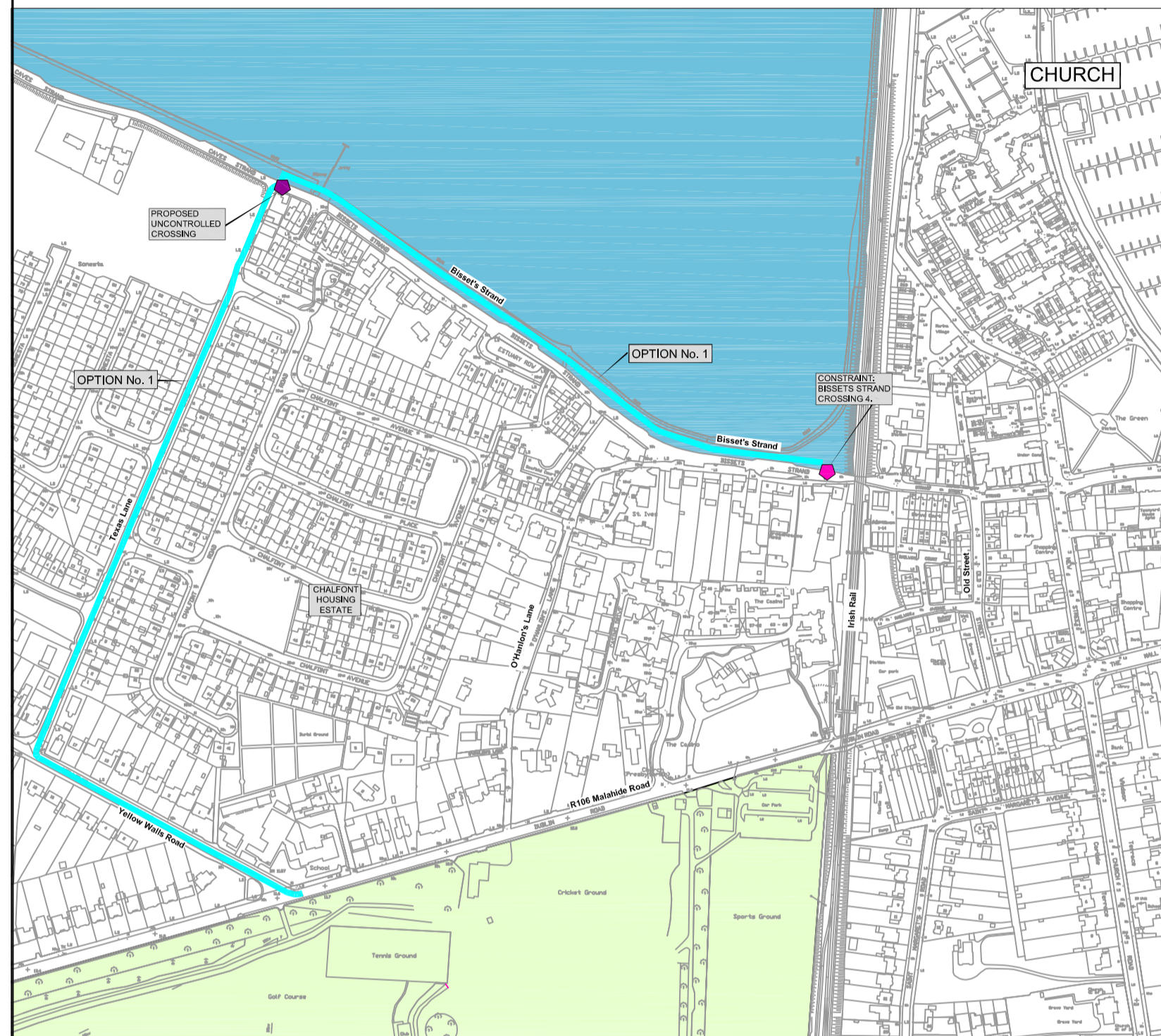
Broadmeadow Way - Section 3

R106 Dublin Road, Malahide To Bissets Strand

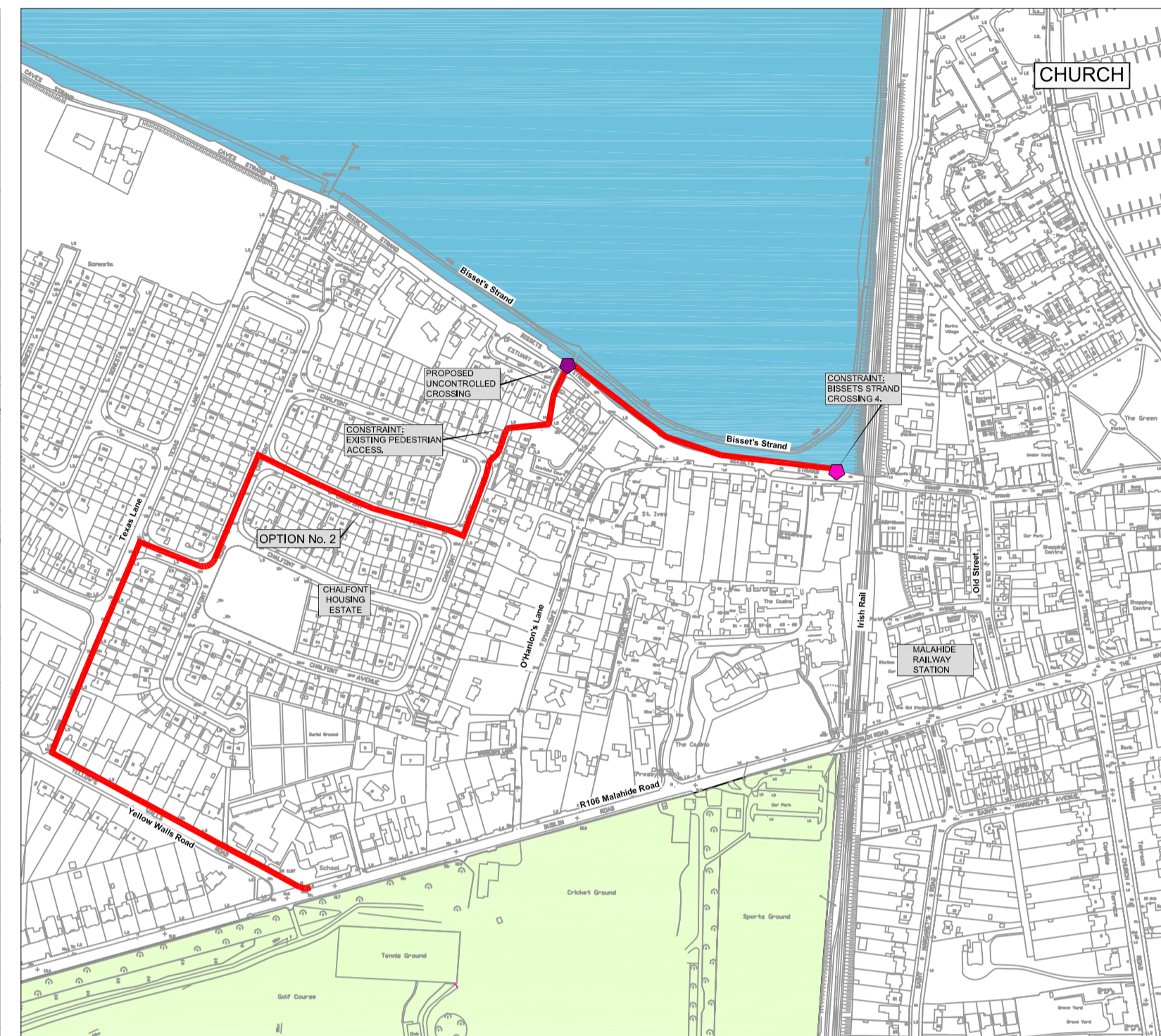


Legend:

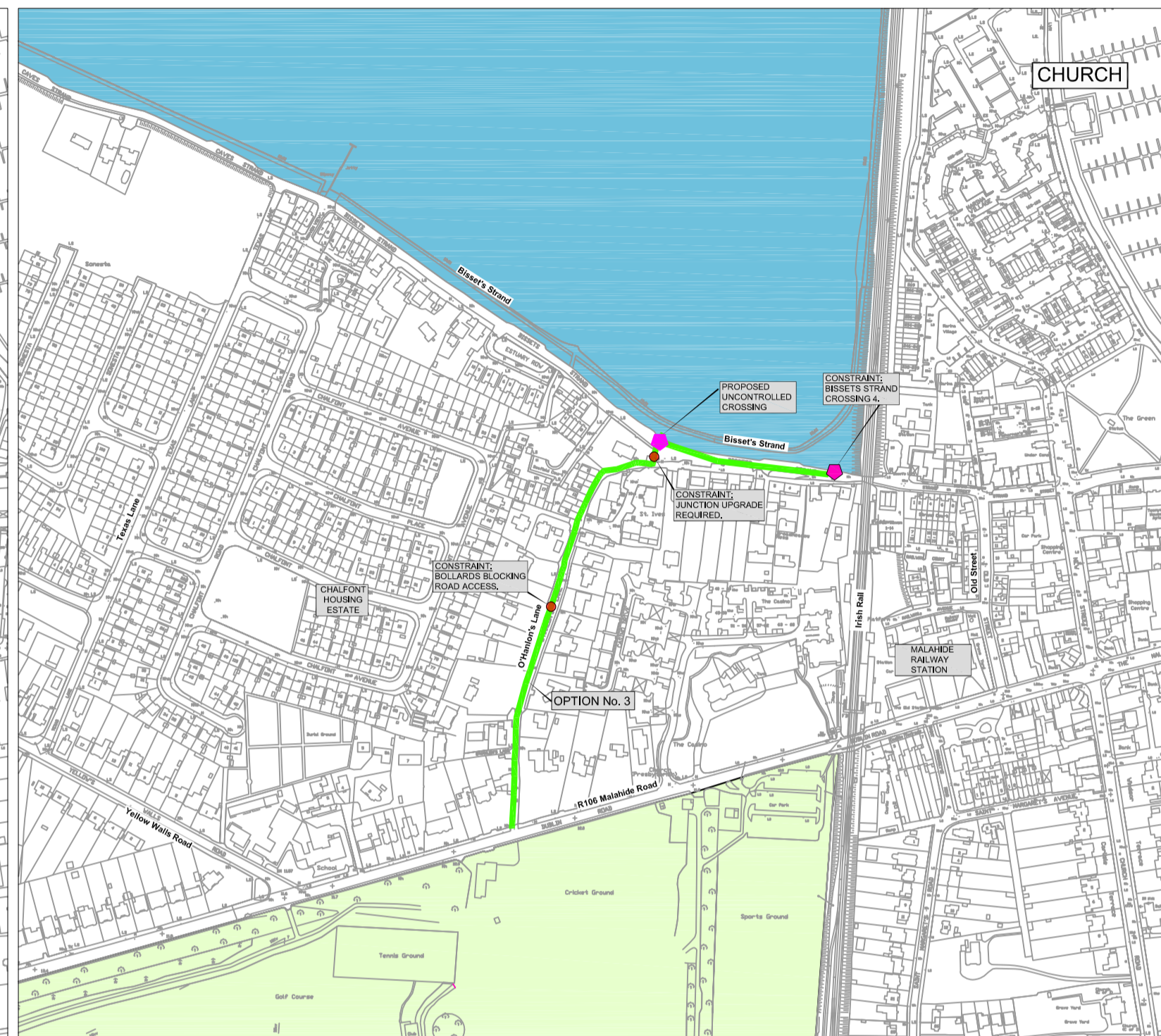
- Section 3 Option 1 █
- Section 3 Option 2 █
- Section 3 Option 3 █
- Section 3 Option 4 █
- Section 3 Option 5 █
- Local Constraints ●
- Proposed Crossings ▾
- Malahide Estuary █
- Local Amenities (Malahide Demesne) █



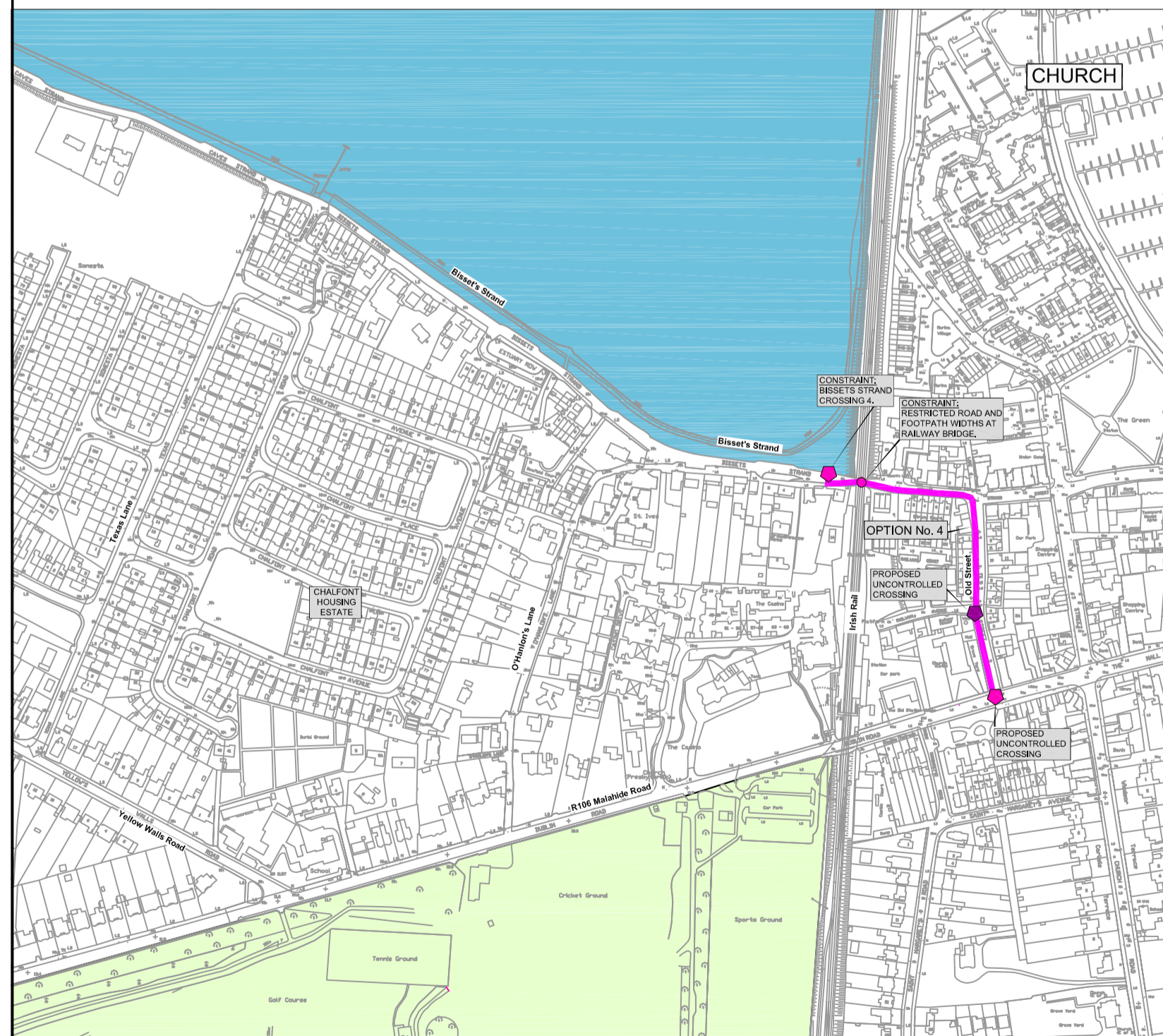
OPTION 1



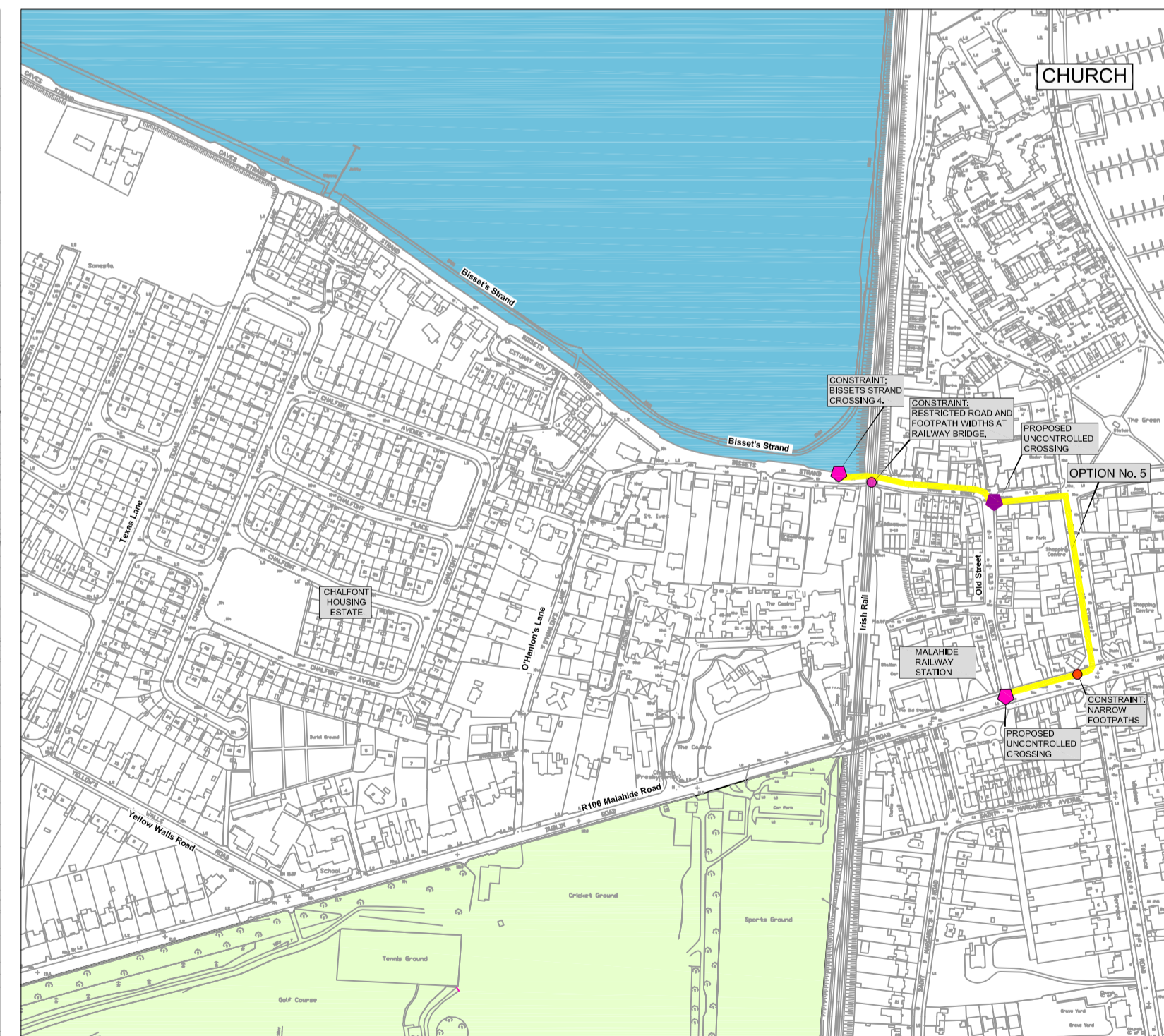
OPTION 2



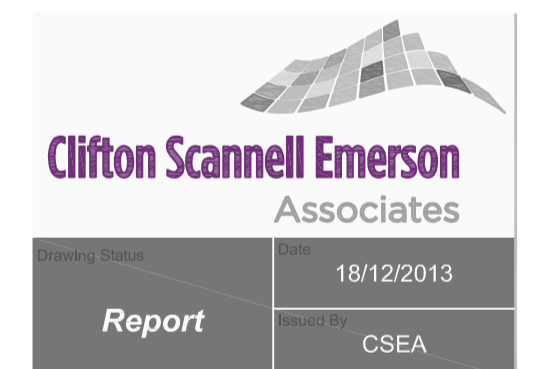
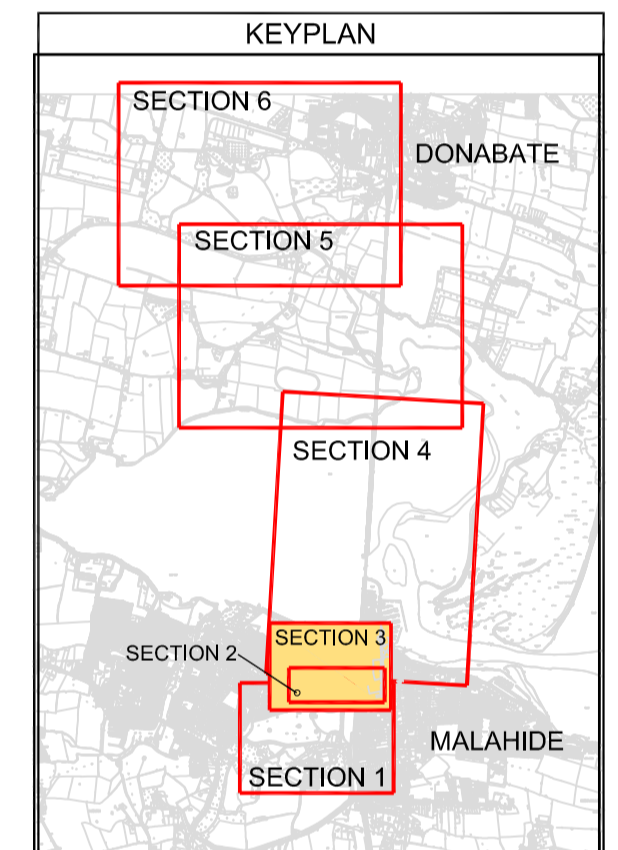
OPTION 3



OPTION 4



OPTION 5



Revision	Description	Initials	Date



Clifton Scannell Emerson
Associates Limited
Consulting Engineers,
Seafort Lodge,
Castledawson Avenue,
Blackrock, Co. Dublin,
Ireland.
T. +353 1 288 5006
F. +353 1 283 3466
E. info@csea.ie
W. www.csea.ie

Fingal County Council

Client

Broadmeadow Way

Project

INDIVIDUAL ROUTE OPTIONS
SECTION 3

Dwg. Title

Drawn By NH Date DECEMBER 2013

Checked by NH Scale NTS @ A1

Dwg. Progress

Dwg. No. 12_160_145