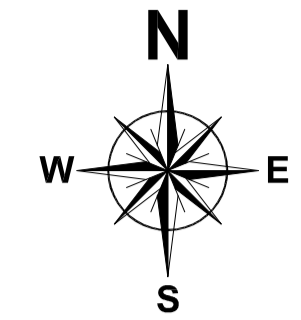


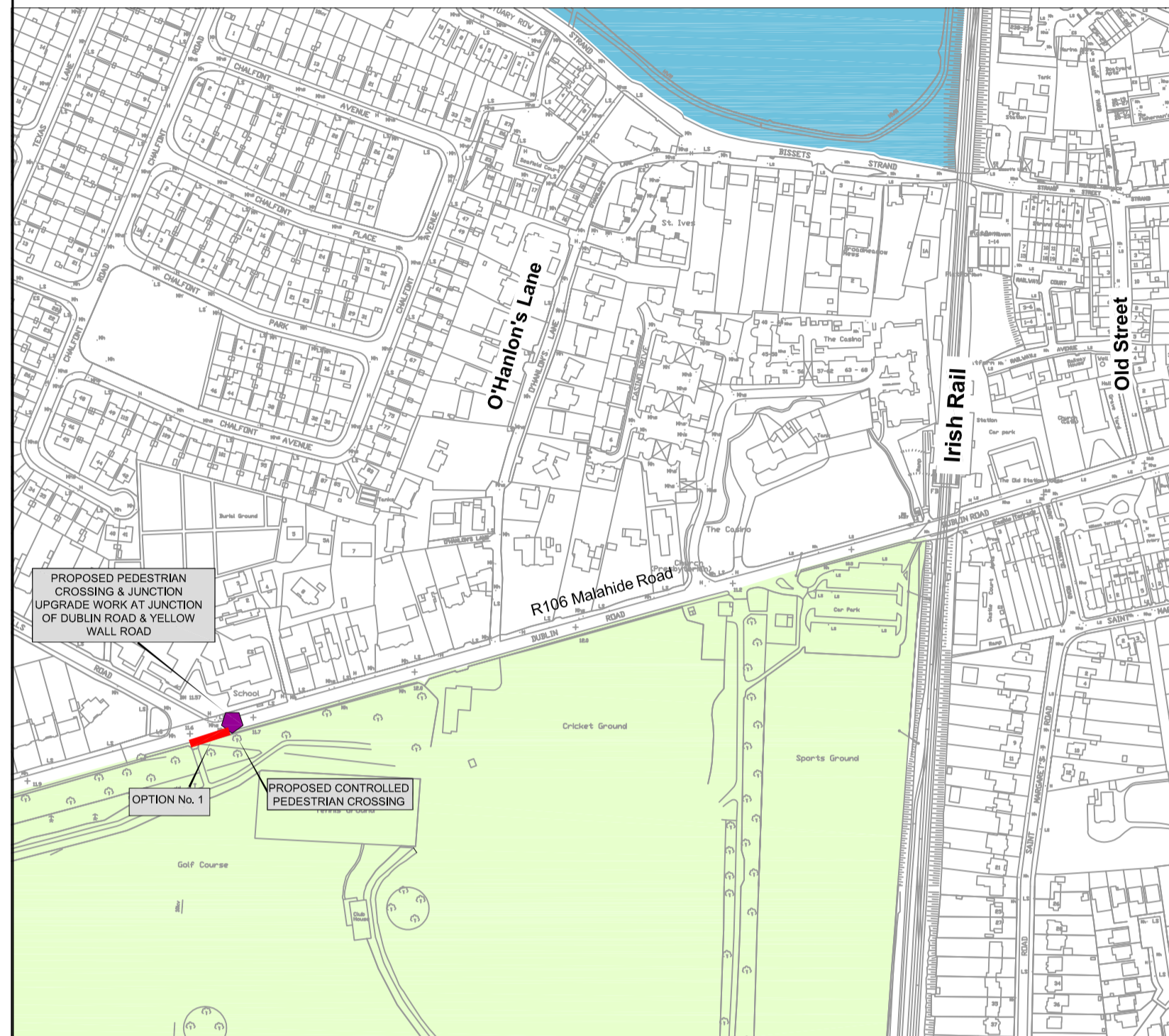
Broadmeadow Way - Section 2

R106 Dublin Road Malahide

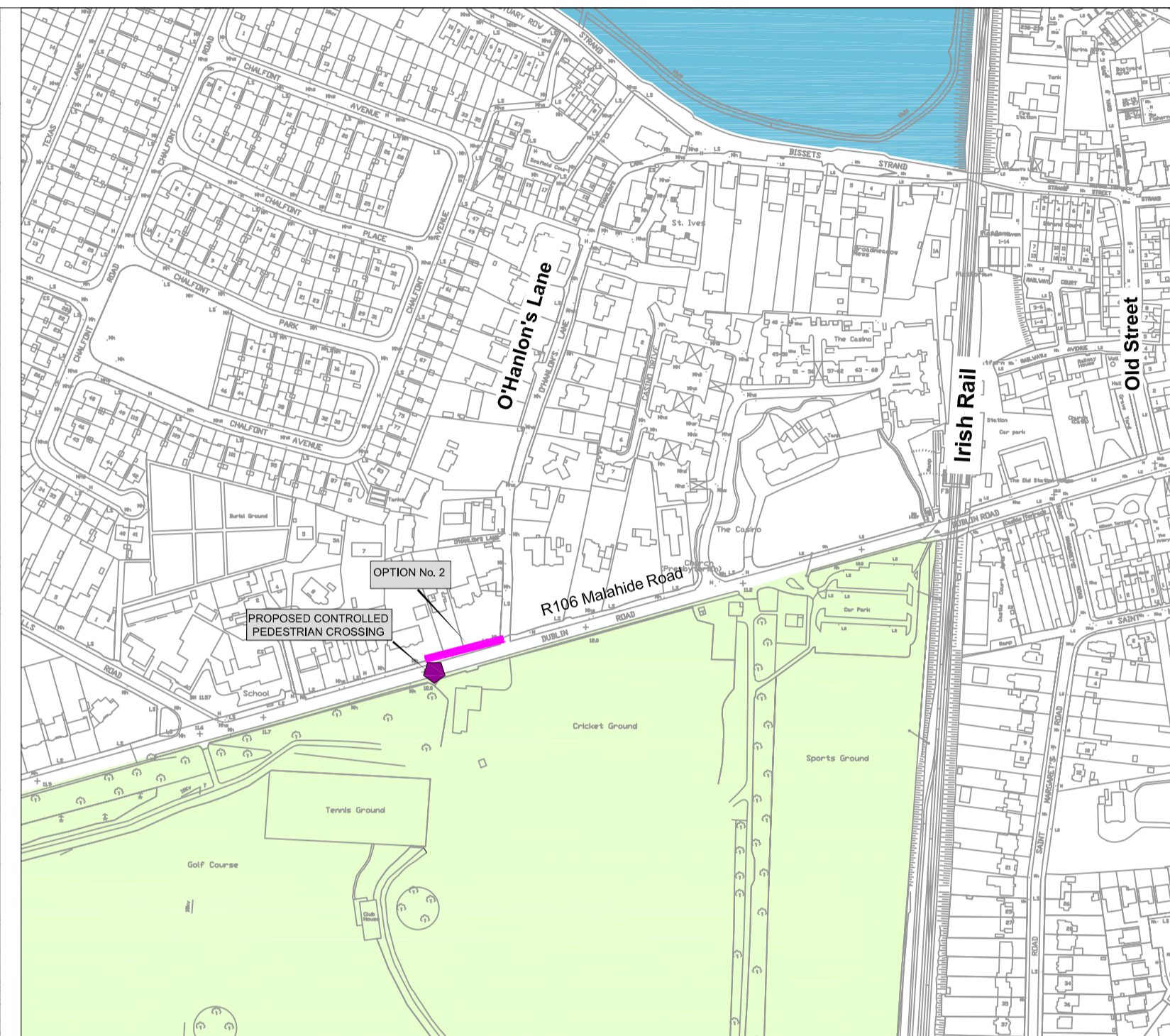


Legend:

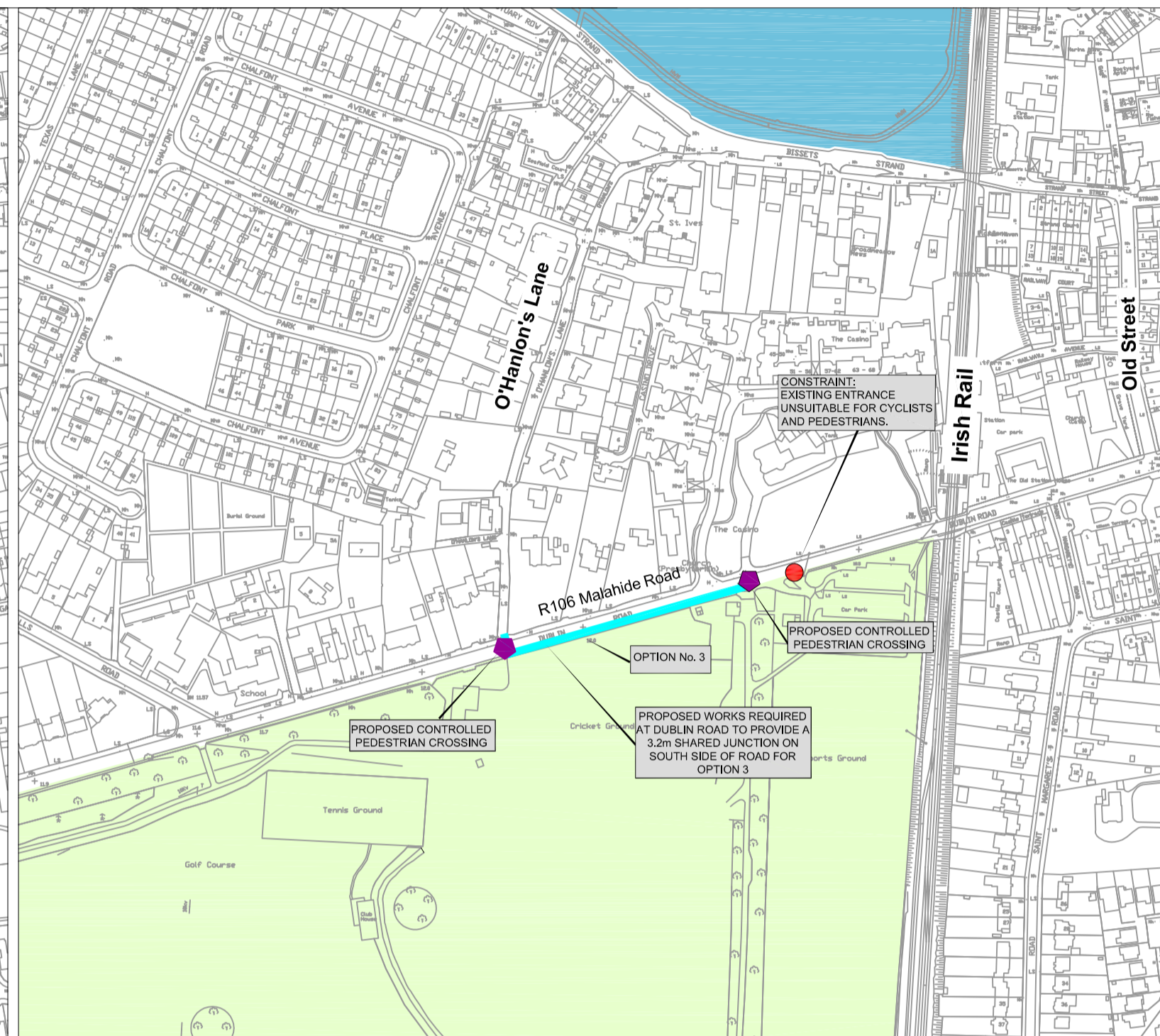
- Section 2 Option 1 —
- Section 2 Option 2 —
- Section 2 Option 3 —
- Section 2 Option 4 —
- Section 2 Option 5 —
- Local Constraints ●
- Proposed Crossings ◊
- Local Amenities (Malahide Demesne)
- Malahide Estuary



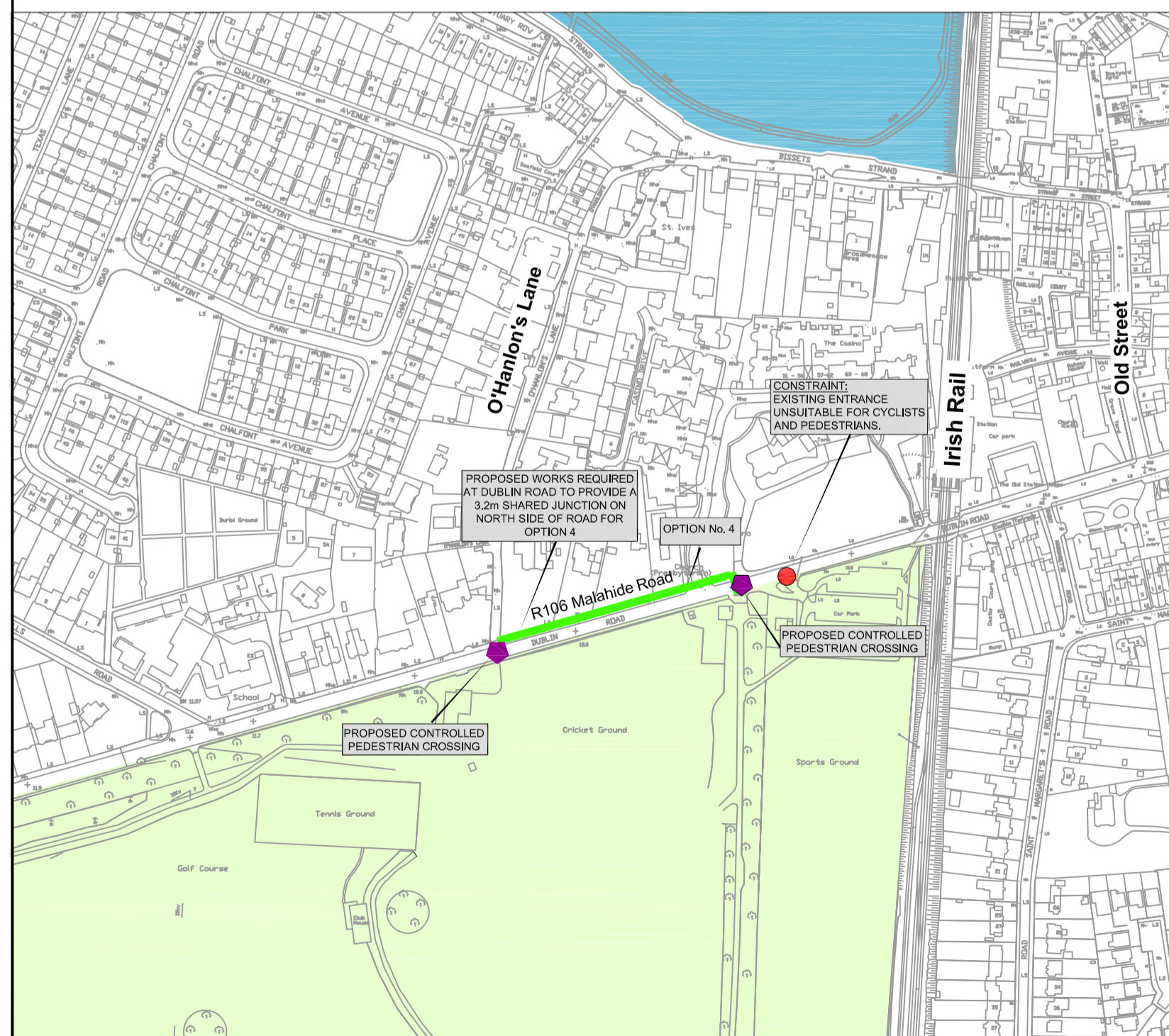
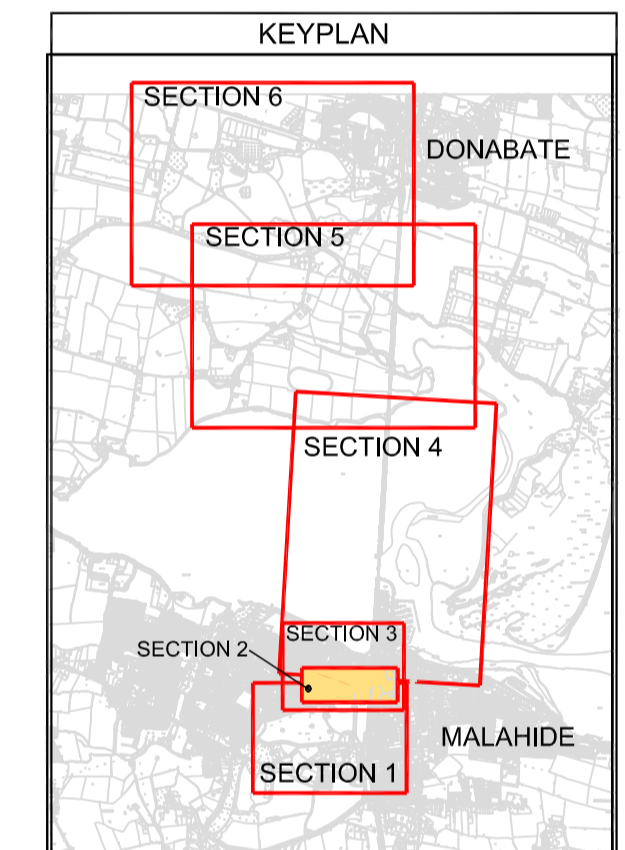
OPTION 1



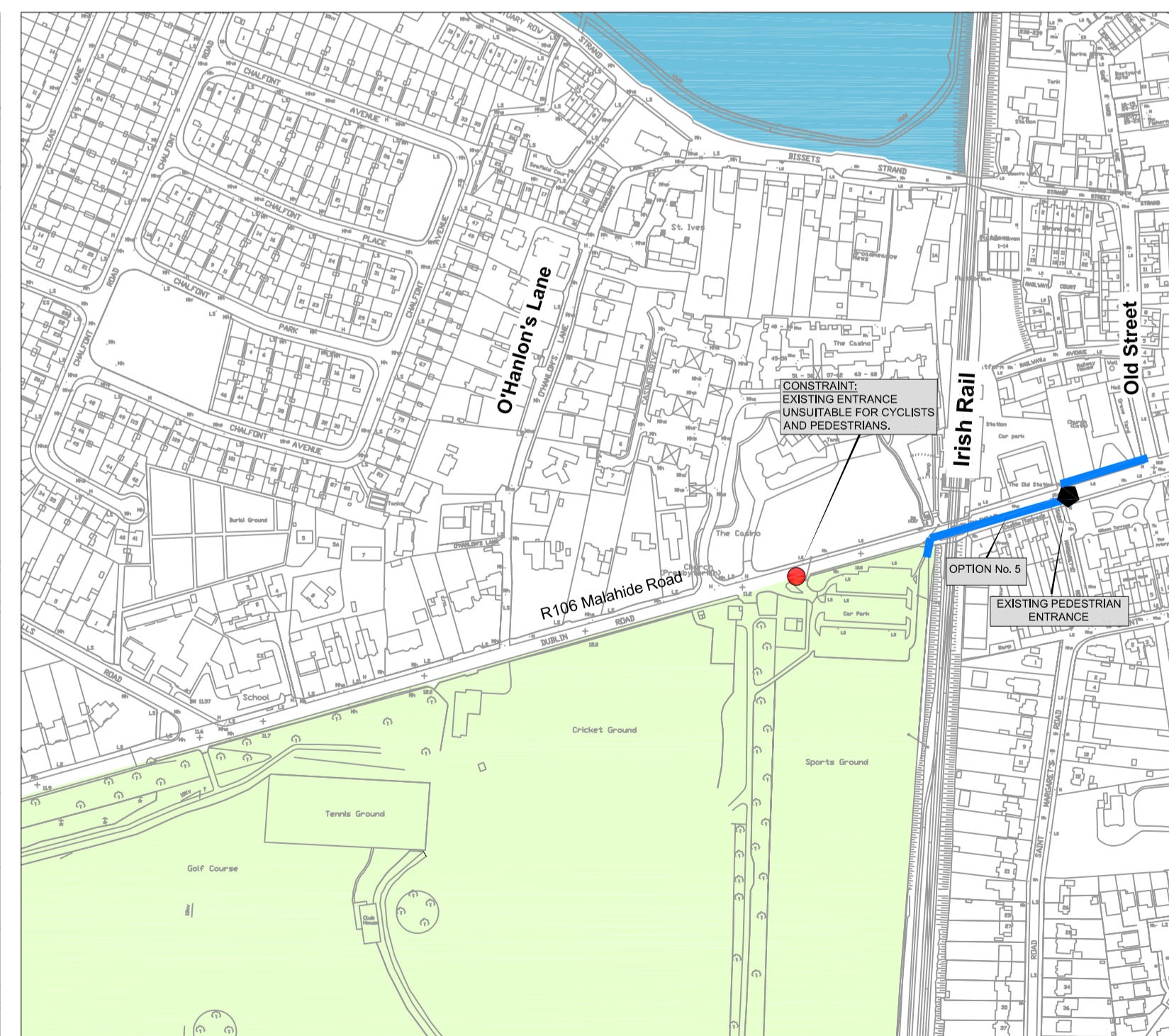
OPTION 2



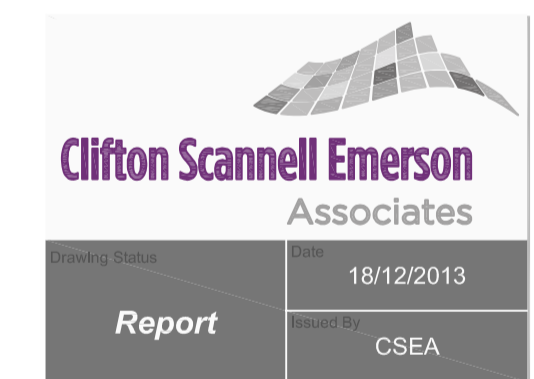
OPTION 3



OPTION 4



OPTION 5



Revision	Description	Initials	Date



Clifton Scannell Emerson
Associates Limited
Consulting Engineers,
Seafort Lodge,
Castledawson Avenue,
Blackrock, Co. Dublin,
Ireland.
T. +353 1 288 5006
F. +353 1 283 3466
E. info@csea.ie
W. www.csea.ie

Fingal County Council

Client

Broadmeadow Way

Project

INDIVIDUAL ROUTE OPTIONS
SECTION 2

Dwg. Title

Drawn By NH Date DECEMBER 2013

Checked by NH Scale NTS @ A1

Dwg. Progress

Dwg. No. 12_160_143