

## 5.8. Aerial Photographs

The following is a series of aerial photographs from the Leo Swan Collection, an Aer Corp aerial photograph and satellite imagery from 1995 to 2016. The dates for the Swan collection are unavailable but possibly date from the 1970s and 1980s. There are a number of features that show clearly on all the images; the road to the Martello tower; the 18<sup>th</sup>/19<sup>th</sup> century field divisions in the northern quadrant of the site and the southern rectilinear boundary to the south; and the stream from the west. Notably there is a possible site visible on the infra-red (Plate 19) in the fields to the west of the headland, traversed by the laneway.

There are two more images (AID005/6) in the Cambridge University Collection of Aerial Photographs (CUCAP) Collection but they are unavailable due to a staff shortage (Professor T. Spencer pers. comm.) A copy of one (AID006) is in the 1977 Drumanagh Topographical file in the National Museum of Ireland labelled simply as 'afternoon 21 August 1963'.



Plate 15: Oblique <http://lswanaerial.locloudhosting.net/items/show/39959>



Plate 16: Oblique <http://lswanaerial.locloudhosting.net/items/show/39958>



Plate 17: Oblique <http://lswanaerial.locloudhosting.net/items/show/39957>

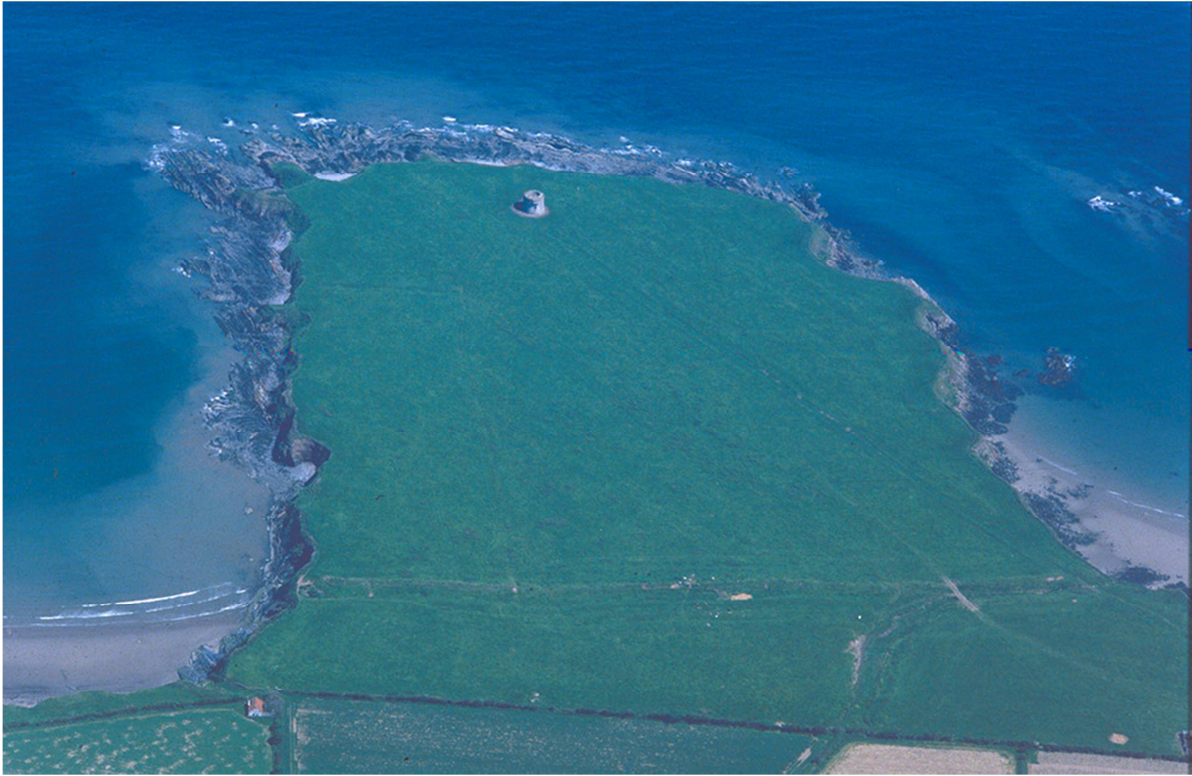


Plate 18: Oblique <http://lswanaerial.locloudhosting.net/items/show/40273>

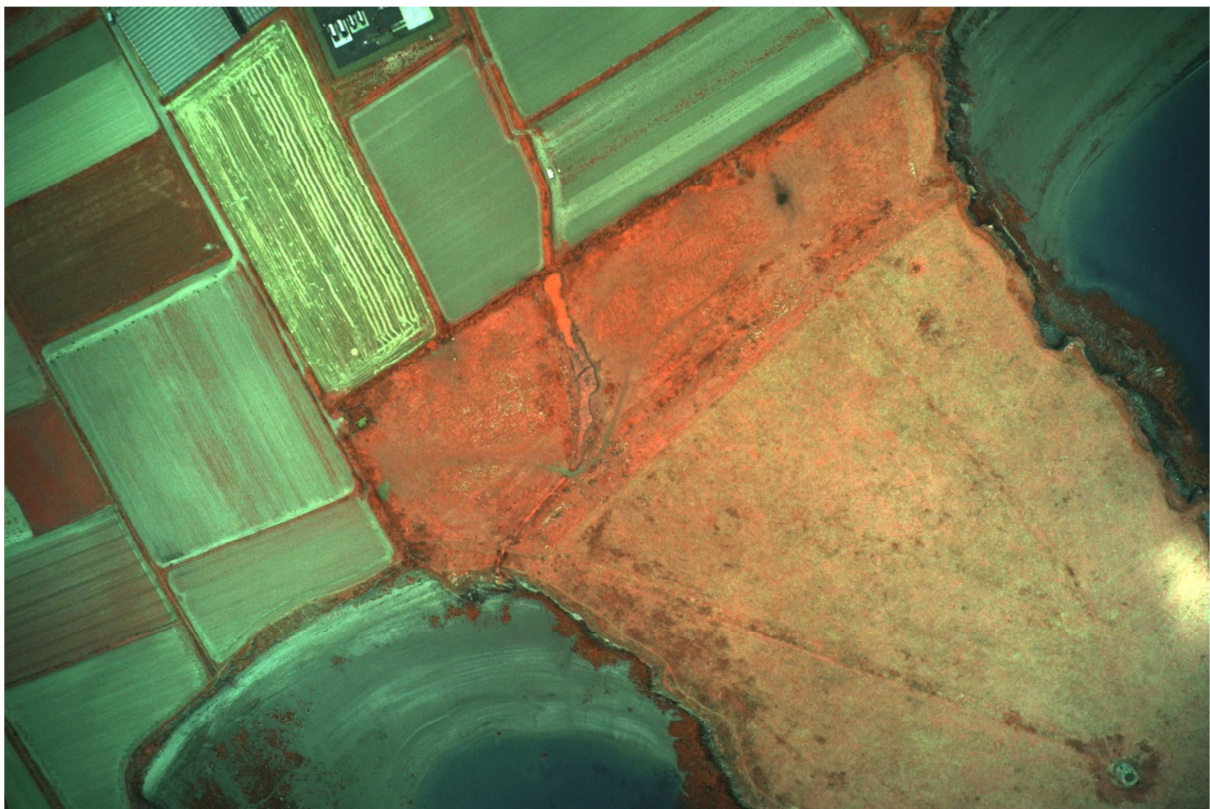


Plate 19: Infra Red image sourced by Jason Bolton (date unavailable)



*Plate 20: Infra Red image sourced by Jason Bolton (date unavailable)*

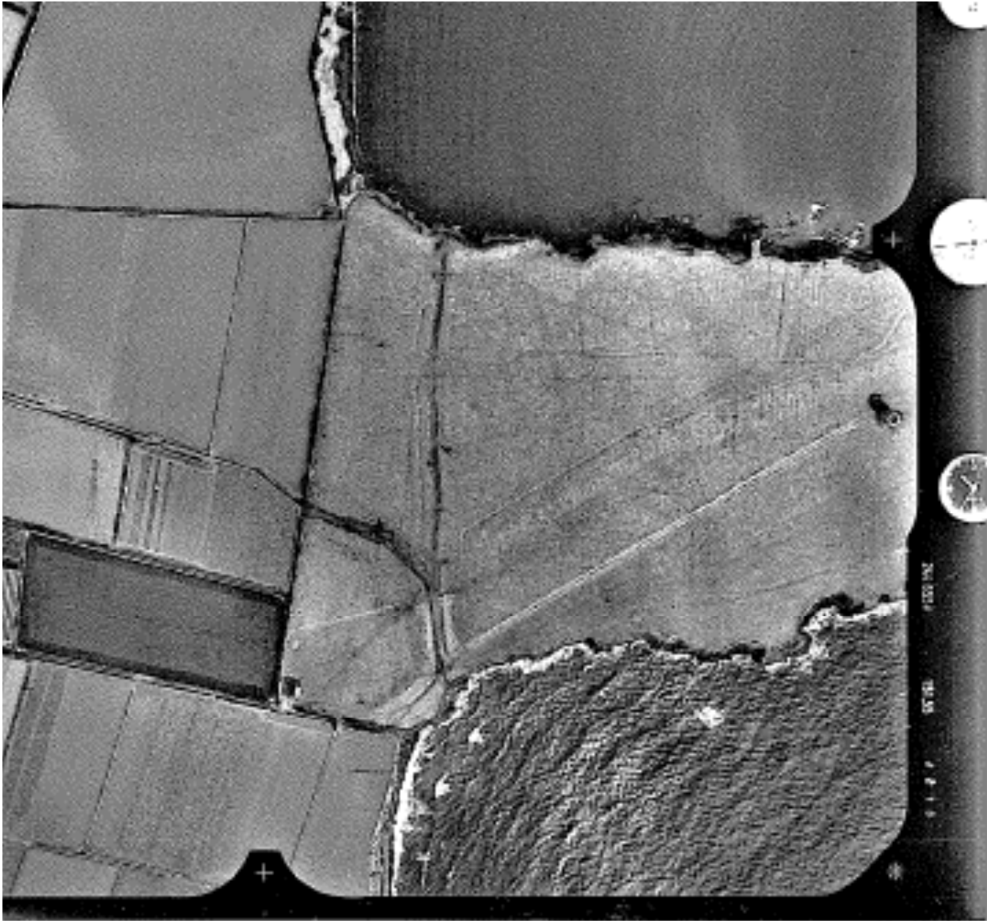


Plate 21: Aer Corp image sourced by Jason Bolton (date unavailable)

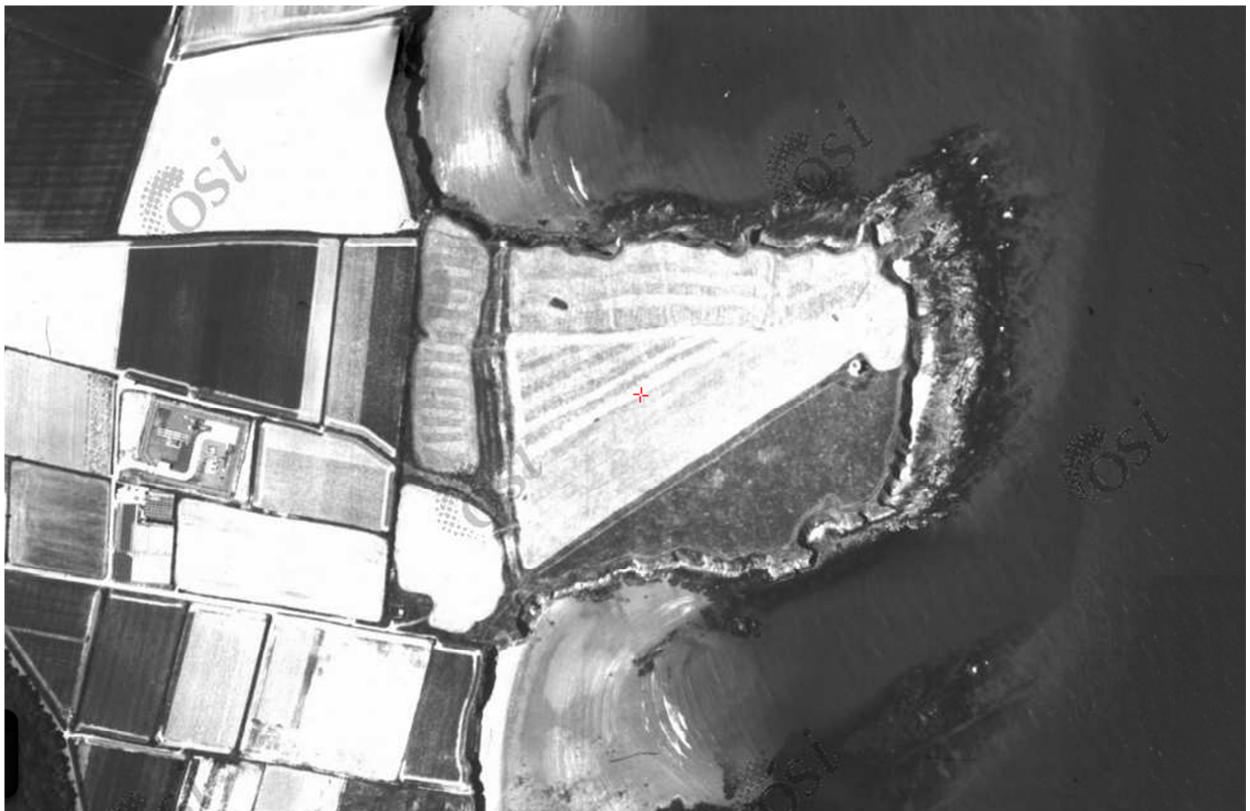


Plate 22: Ordnance Survey of Ireland orthostat image 1995



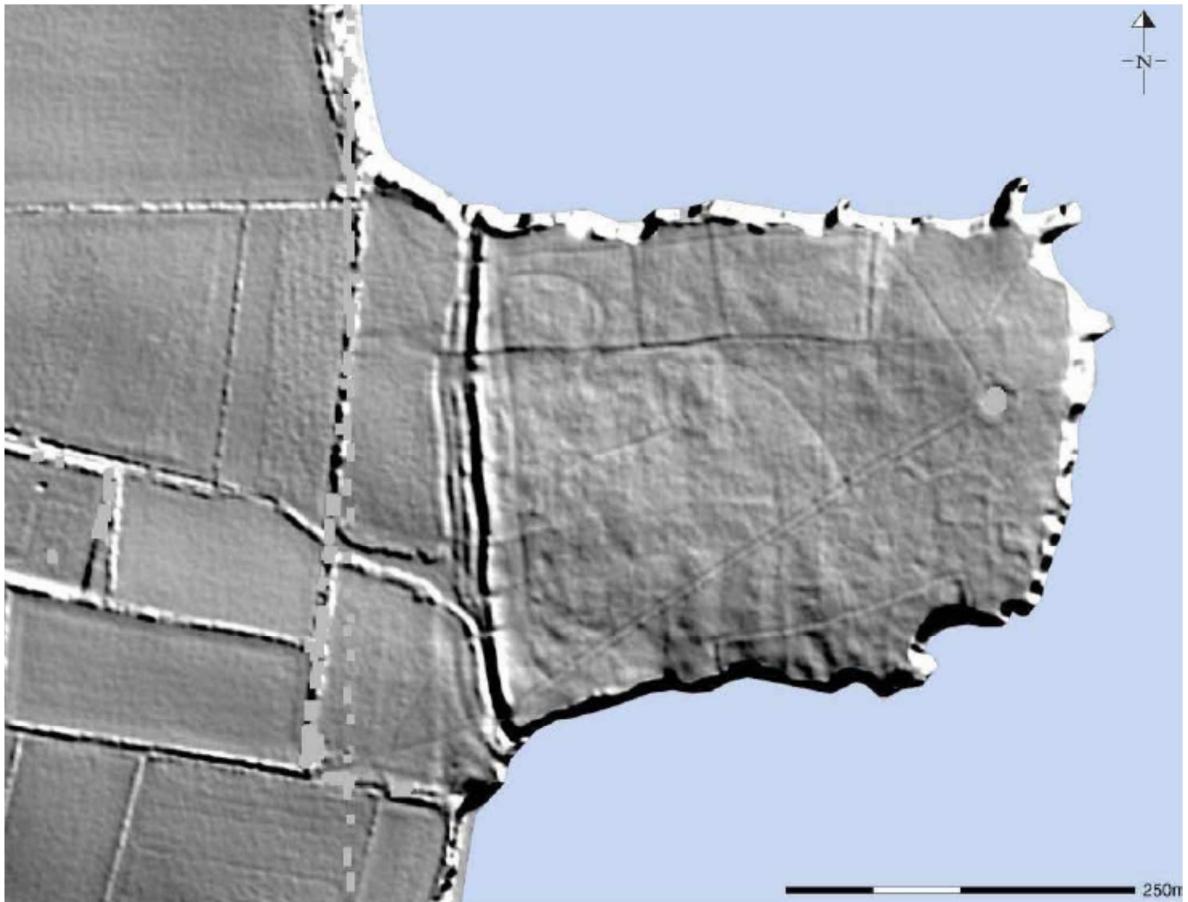
*Plate 23: Ordnance Survey of Ireland orthostat image 2000*



*Plate 24: Ordnance Survey of Ireland orthostat image 2005*



*Plate 25: Google Earth Image 2014*



*Plate 26: LiDAR image, Fingal County Council and The Discovery Programme 2014*