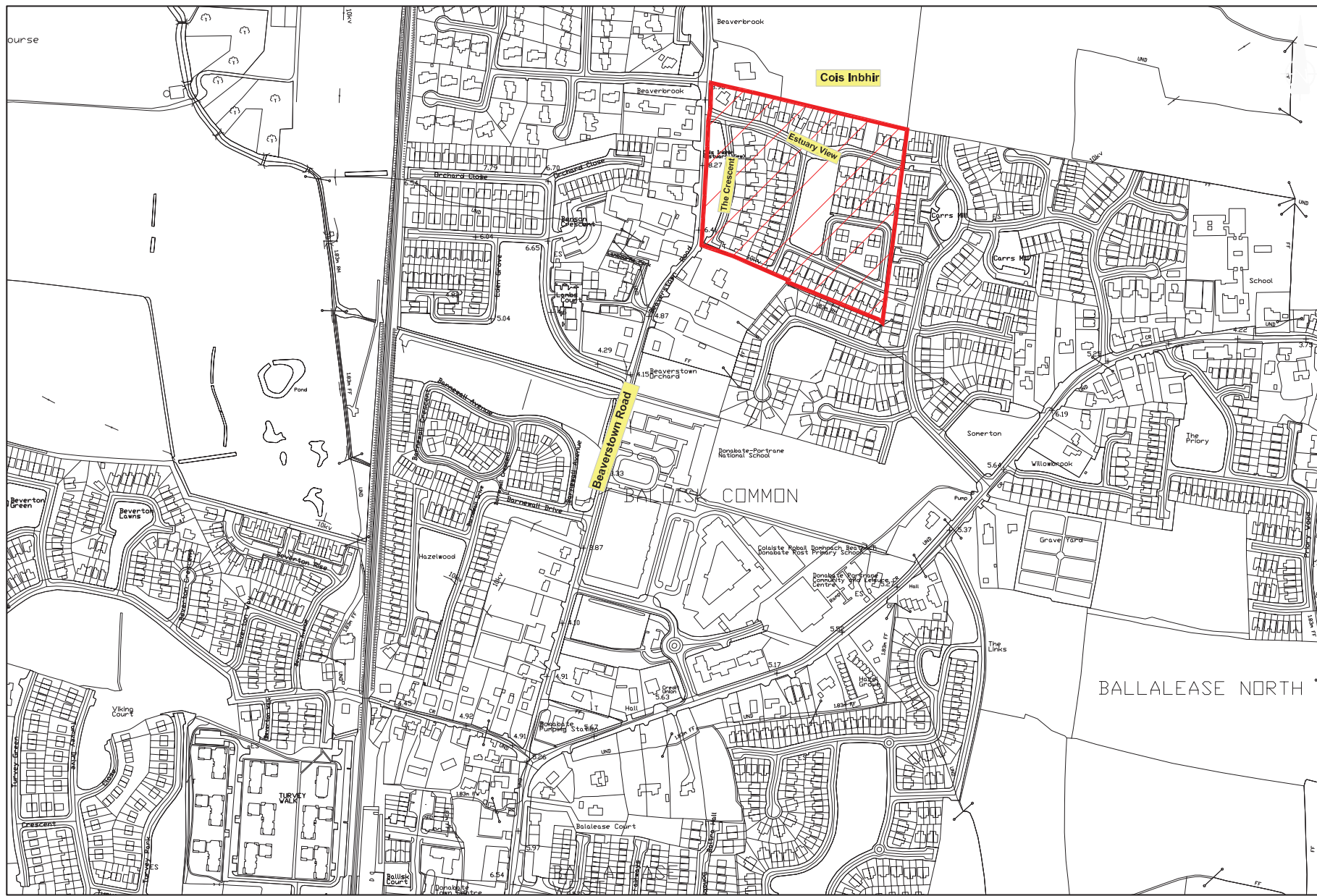




PROPOSED 30km/h SPEED LIMITS - COIS INBHIR ESTATE, DONABATE, CO. DUBLIN.



TYPICAL SIGNAGE LAYOUT



LEGEND

-Proposed Residential and Housing Estate 'Slow Zone' - Speed Limit 30km/h

No.	DATE	REVISION

SCALE:- NTS

DATE:- MAY 2017

DRAWN:- COF

PROJECT TITLE: 30km/h SPEED LIMIT

DRAWING TITLE COIS INBHIR ESTATE, DONABATE, CO.DUBLIN.

SENIOR ENGINEER:
Colm Keenan

PROJECT ENGINEERS
COLUM GALLAGHER

DRAWING. NO:

30km/h-2017-SPL-1-003